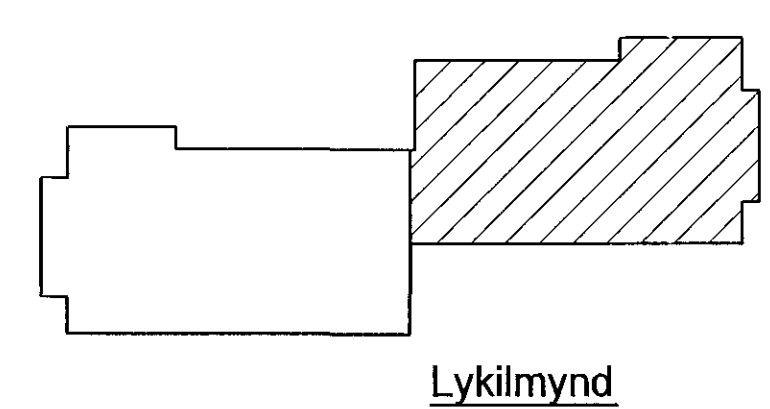
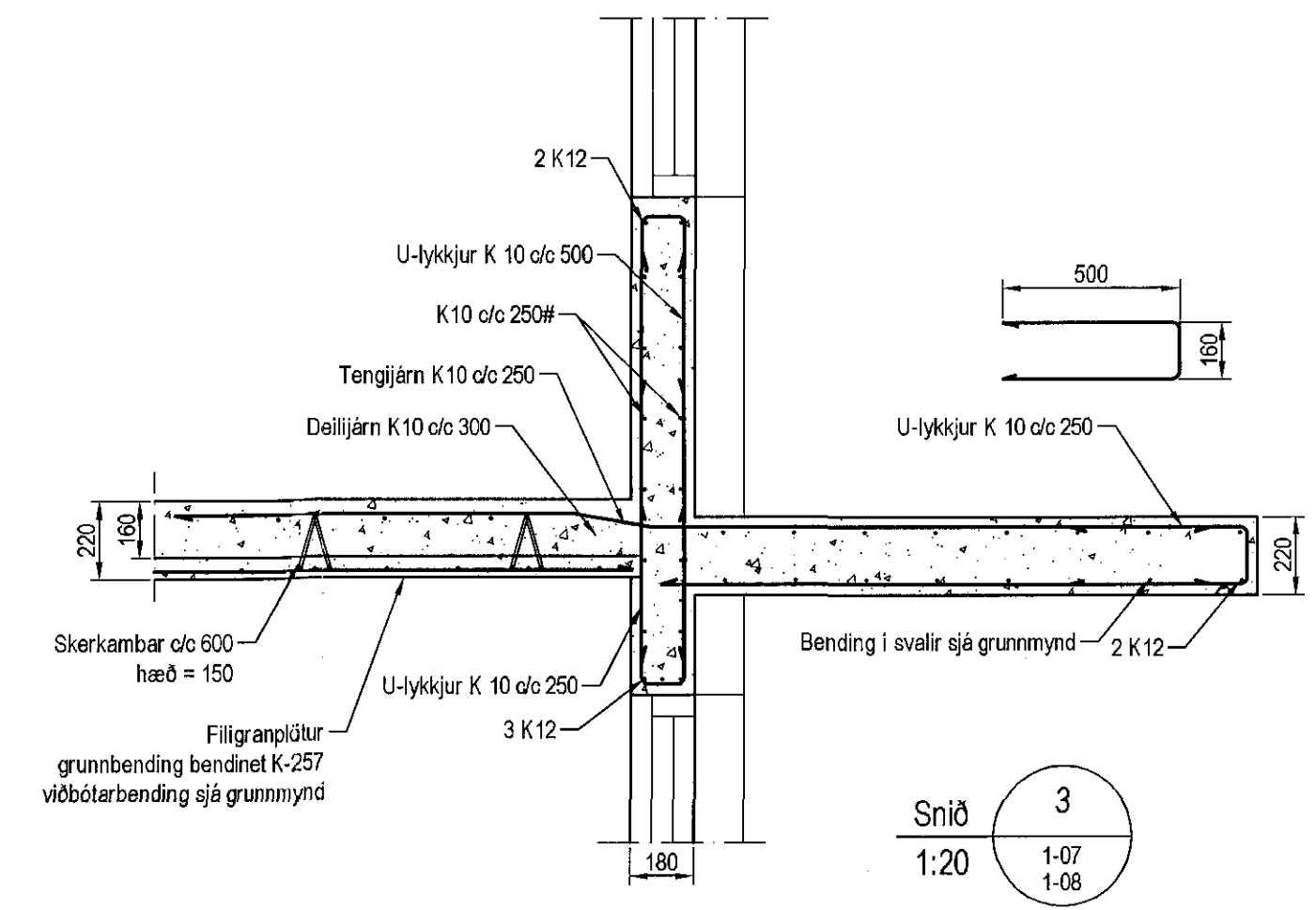
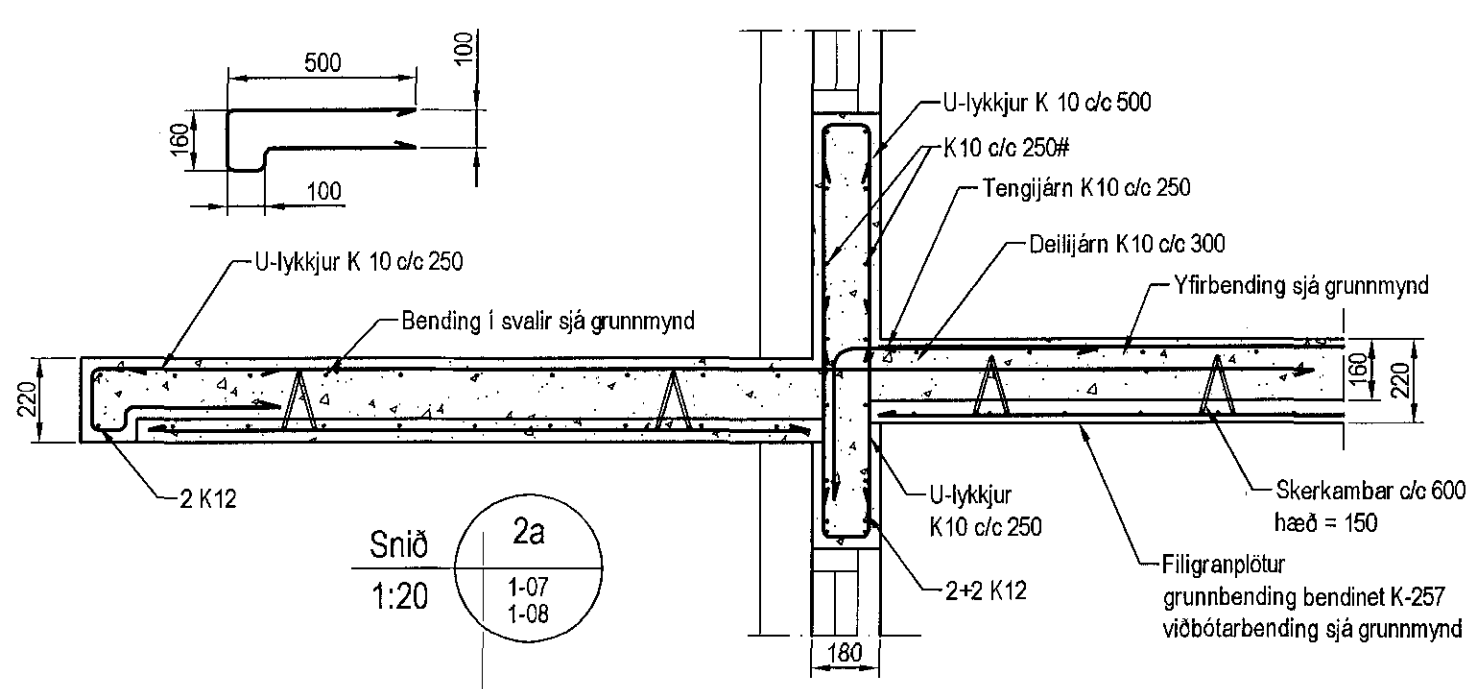
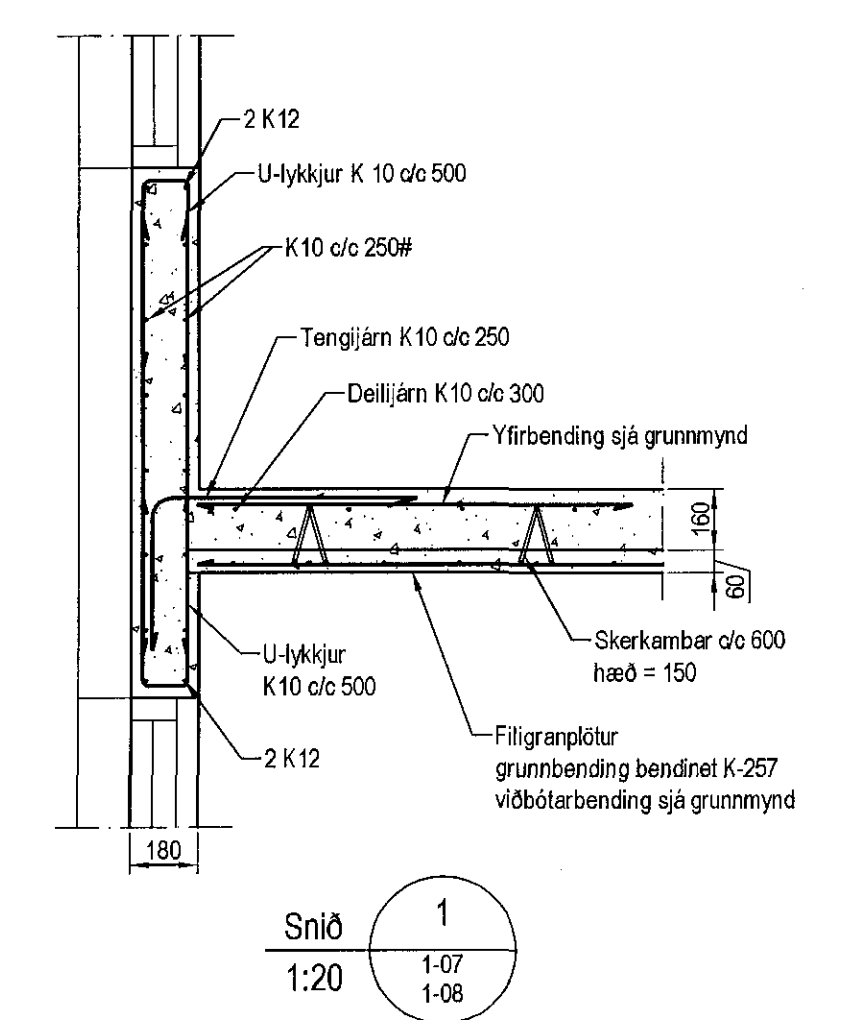
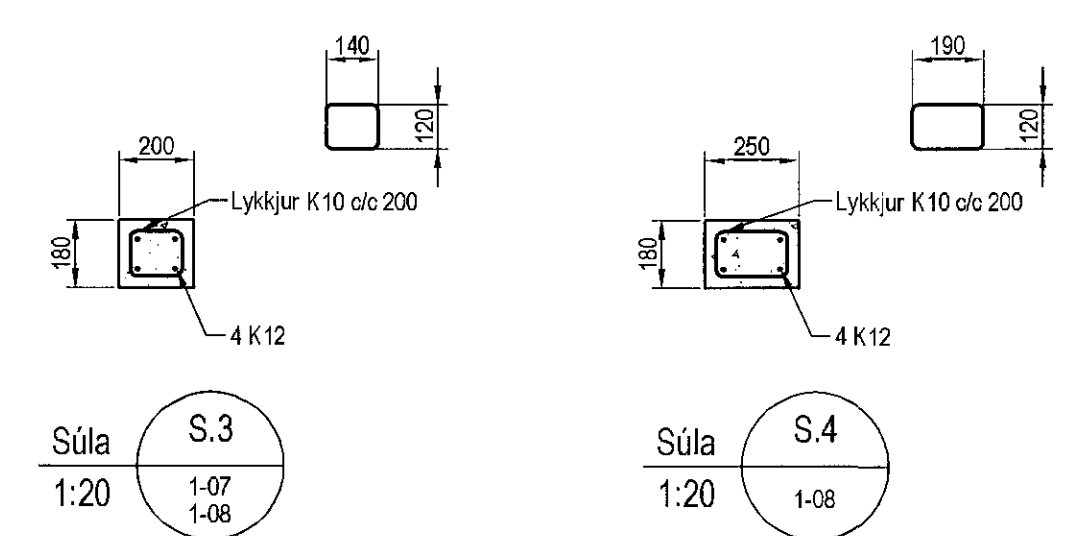
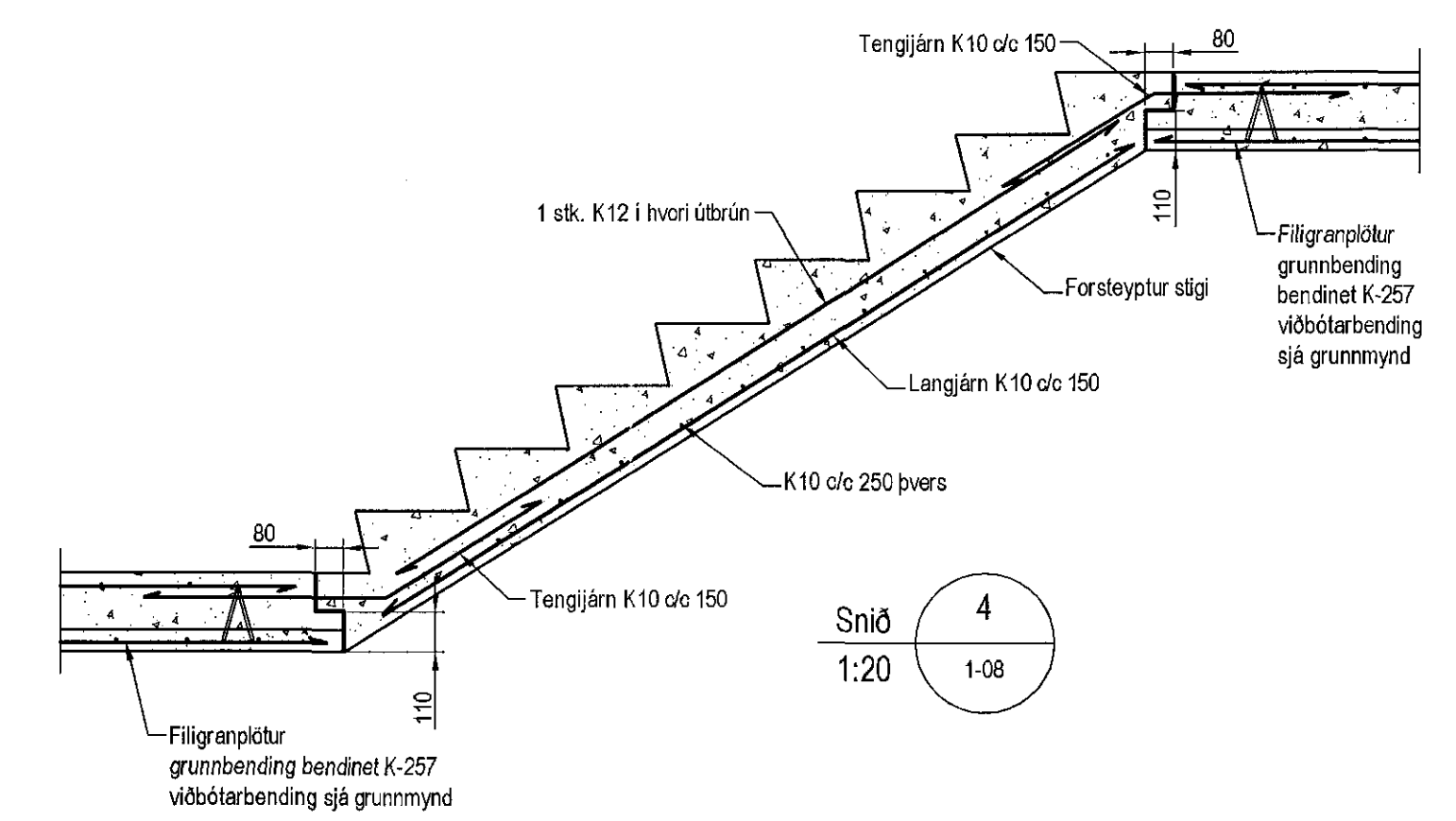


Plata yfir 2. hæð, Grunnmynd, 1:50  
Bending yfir filigranplötum



Samþykkt þann  
31 JAN 2017  
Byggingarfulltrúinn í Hafnarfirði  
F.h. Sigurður Steinar Jónsson



Skýringar

Almennar skýringar sjá blað 00-01  
 Steypa  
 Veggr  
 Bröttolsfokkur: C25/28 samkv. ENV 206-1:2008  
 Væðnesmentala: skal vera minni en 0,55  
 Loftmagn: 5-7%  
 Sígnál: 60-80 mm  
 Flötur  
 Bröttolsfokkur: C30/37 samkv. ENV 206-1:2008  
 Væðnesmentala: skal vera minni en 0,55  
 Loftmagn: 5-7%  
 Sígnál: 60-80 mm  
 Ateg á plötur  
 Eignþyngd: 5,5 kN/m<sup>2</sup>  
 Lættir milliveggr: 1,0 kN/m<sup>2</sup>  
 Notalaag á plötur: 2,0 kN/m<sup>2</sup>  
 Notalaag á stiga: 4,0 kN/m<sup>2</sup>  
 Notalaag á svalir: 4,0 kN/m<sup>2</sup>

Útgáfa	Breyting	Dagsetning	Hannað
Sveinbjörn Hinriksson Byggingateknifráðgjafi nr. 16551-2628 Strandgötu 11 Hafnarfirði Sími: 555-4008, 861-6861 Netfang: sveinhj@mmma.is		Staður Einivellir 3 Hafnarfirði Skýring Veggr 2. hæð, Plata yfir 2. hæð	
Hannað / Teiknað	Kvæð 1:50 1:20	Dagsetning 16.12.16	Verkr. 13-16 Teikn.nr. 1-08

*Jón Guðmundsson*