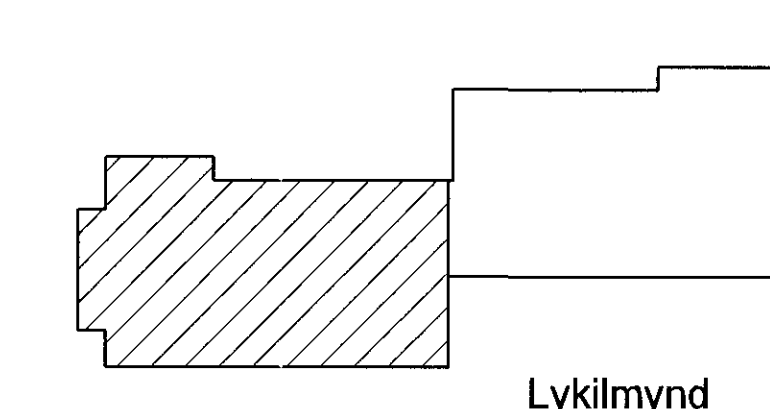
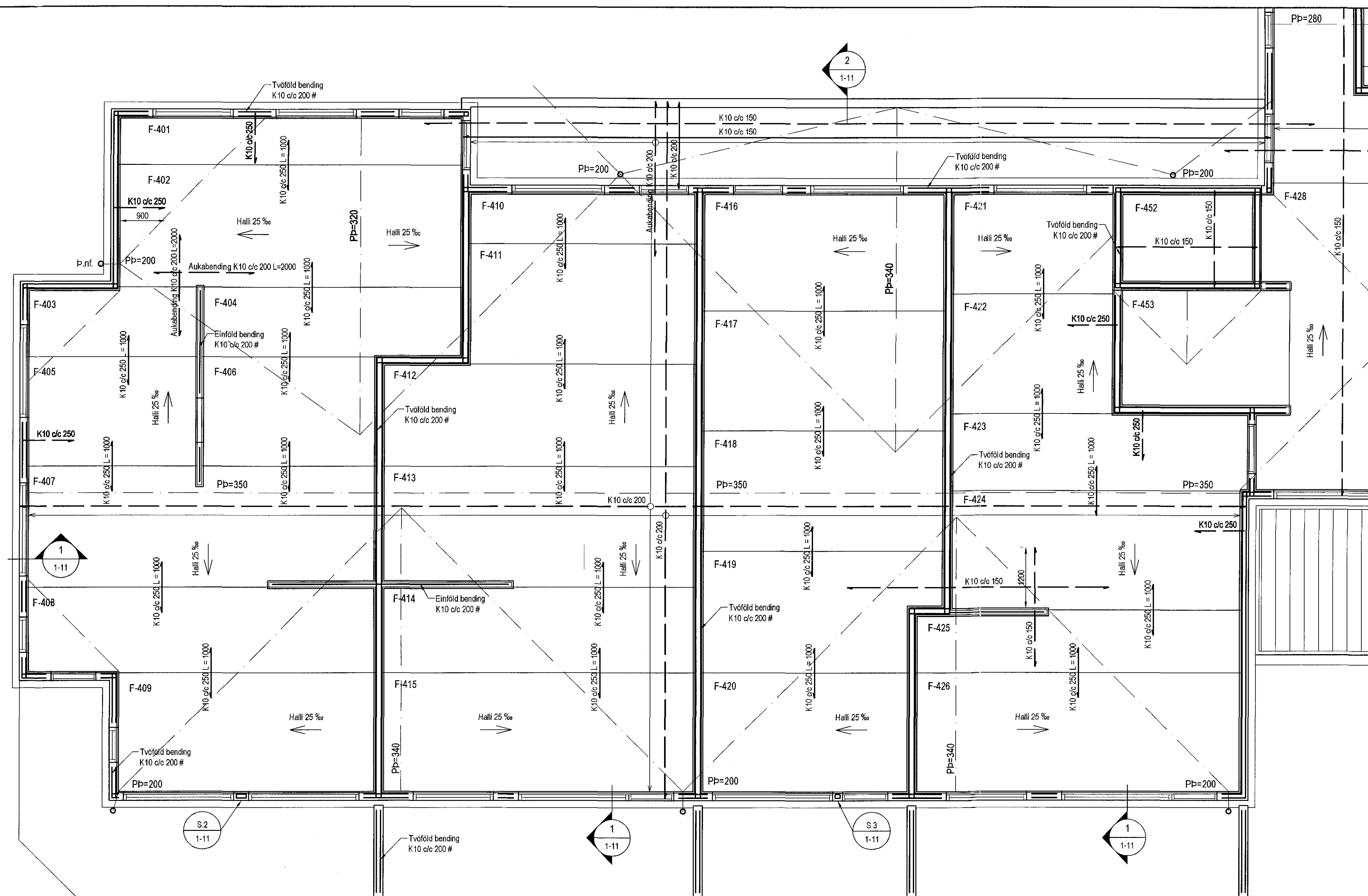
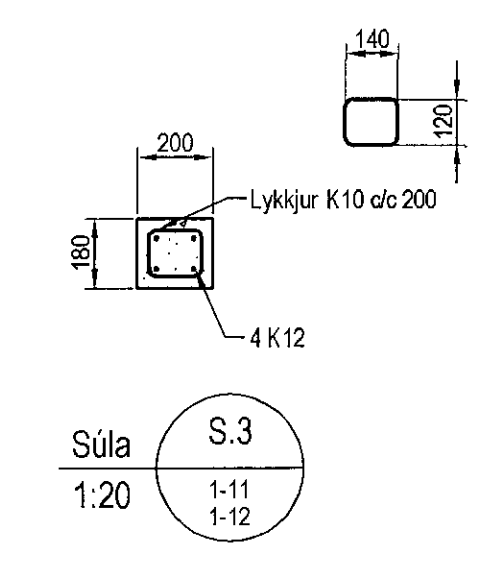
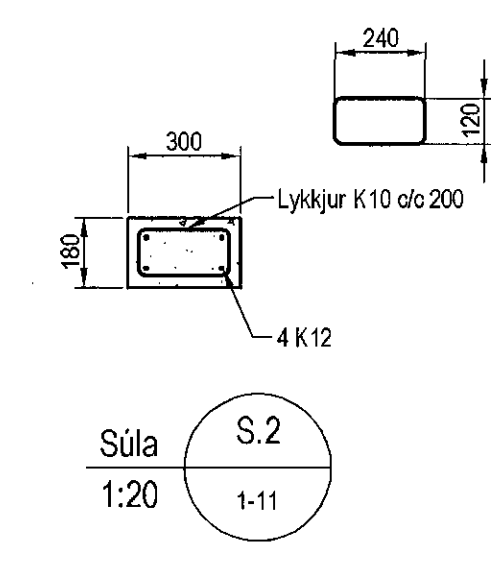
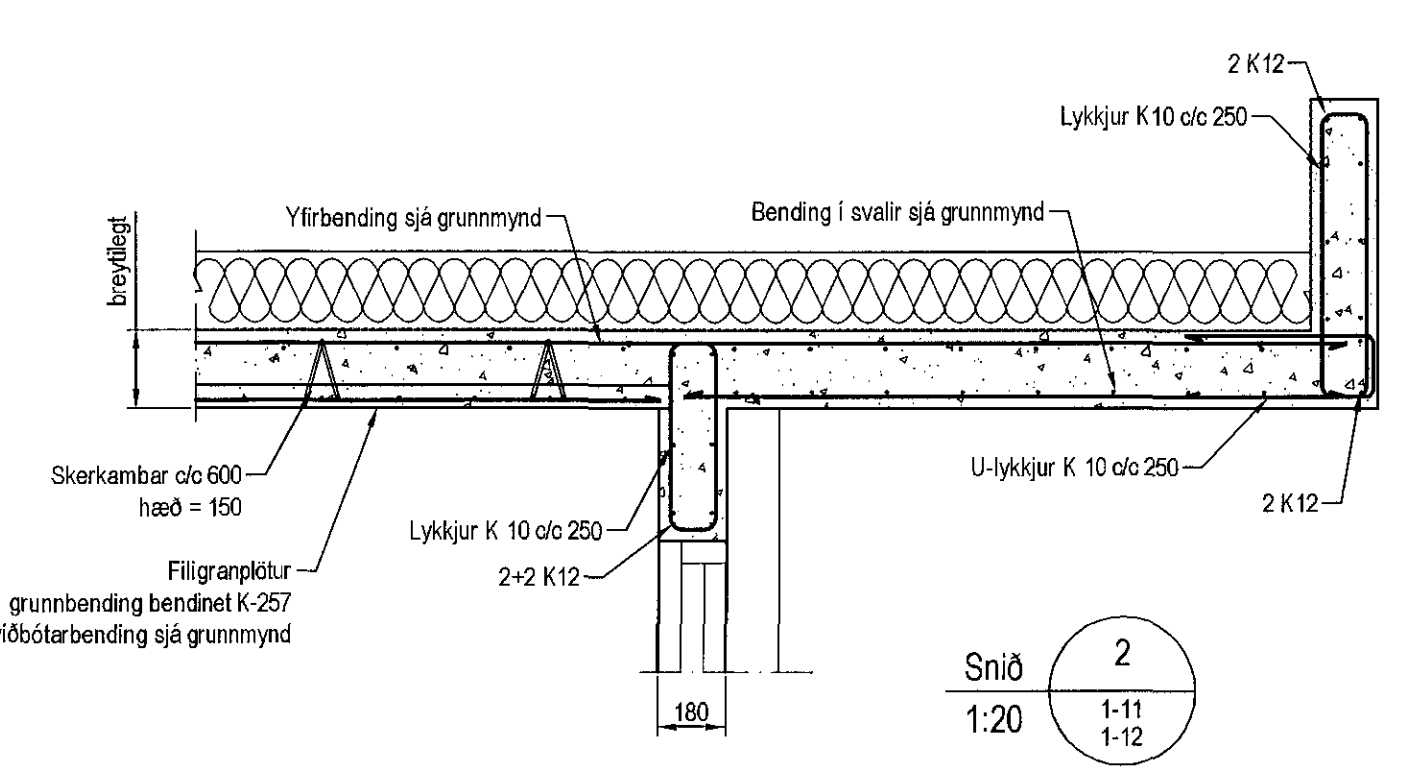
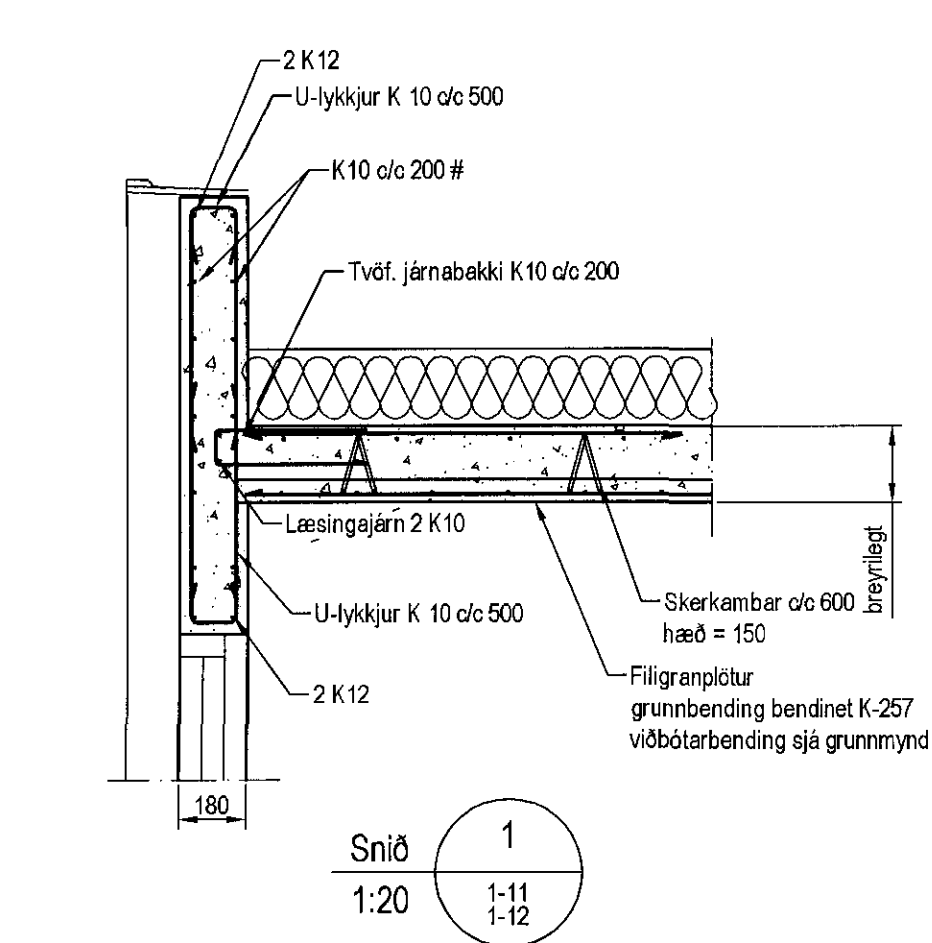


Sambykkt þann  
31 JAN 2017  
Byggingarfulltrúinn í Hafnarfirði  
F.h. Sigurður Steinar Jónsson



Plata yfir 4. hæð, Grunnmynd, 1:50

Bending yfir filigranplötum



Skýringar

- Almennar skýringar sjá blað 00-01
- Steypa**  
Veggir  
Stölpuleftekur: C25/28 samkv. ENV 206-1:2000  
Vatnsementtala: skal vera minni en 0,55  
Loftmagn: 5-7%  
Stigmál: 60-80 mm
- Plötur**  
Eindölslefkur: C30/37 samkv. ENV 206-1:2000  
Vatnsementtala: skal vera minni en 0,55  
Loftmagn: 5-7%  
Stigmál: 60-80 mm
- Álag á plötur**  
Eiginbyggt: 5,5 kNm<sup>2</sup>  
Lettir miðveggir: 1,0 kNm<sup>2</sup>  
Notalaag á plötur: 2,0 kNm<sup>2</sup>  
Notalaag á stöpa: 4,0 kNm<sup>2</sup>  
Notalaag á svalir: 4,0 kNm<sup>2</sup>

Útgáfa	Breyting	Dagsetning	Hannað
Sveinbjörn Hinriksson Byggingateknifresöngingur Hf. 1608544-2016 Strandgötu 11 Hafnarfirði Sími: 555-4008, 861-9661 Netfang: sveinhj@simnet.is		Staður Einivellir 3 Hafnarfirði	
		Skýring Veggir 4. hæð, Plata yfir 4. hæð	
Hannað / Teiknað	Kvarð 1:50 1:20	Dagsetning 16.12.16	Verkur. 13-16 Teikn.nr. 1-11

*Sveinbjörn Hinriksson*