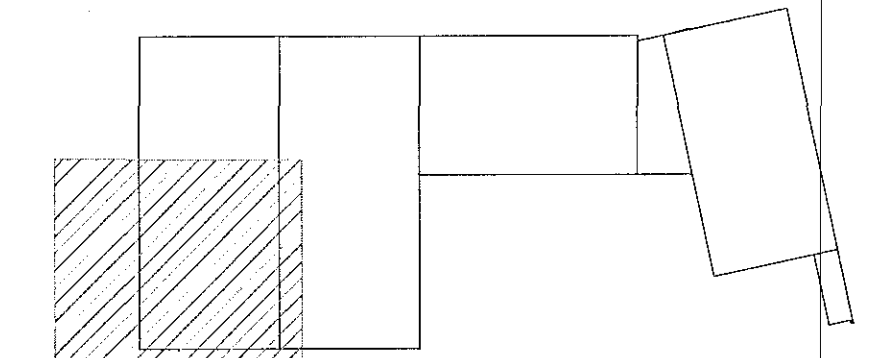
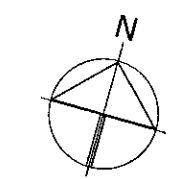


Samþykkt þann
26 MAY 2017
Byggingarfulltrúinn í þessari
F.h. Sigurður Steinar Jónsson

GENERAL NOTES:

- ALL UNITS ARE mm
- ALL ELEVATIONS ARE m
- ALL STEEL SHALL BE ACCORDING TO EN 1993-1-1:2005
- EXECUTION OF STEEL STRUCTURE SHALL BE ACCORDING TO EN 1090-2-2008
- STEEL GRADE OF MEMBERS SHALL GENERAL BE S235 EXCEPT CROSS BRACING (SHS100x5) SHALL BE STEEL GRADE S355
- ALL BOLTS SHALL BE IN CLASS 8.8
- SURFACE TREATMENT OF ALL STEEL SHALL BE ACCORDING TO CORROSIONIVITY CATEGORY C3. STEEL SHALL BE PAINTED WITH PRIME COAT AND ON TOP OF THAT TWO LAYERS OF APPROPRIATE PAINT OF DARK GRAY COLOR (RAL 7016, GLOSS 35-40%) MINIMUM THICKNESS SHALL BE 100µm. PAINT SYSTEM SHALL BE APPROVED BY FERILL.
- C-SECTIONS ACCORDING TO METSEL PRODUCTION

LYKILMYND



ÁRITUN ADALHÖNNUNAR: *[Signature]* *[Signature]*

BR.	DAGS.	BREYTING	SAMP.

ferill
VERKFRÆÐISTOFA

FLUGVELLIR 1 HAFNARFIRDI
NÝBYGGING

BURÐARVIRKI
PLATA YFIR 1. HÆÐ
GRUNNMYND

SAMÞYKKT: *[Signature]* 260113-3879

HÖNNUÐUR	YFIRFARND	DAGS. 6TG.	DAGS. BREYT.
PÓ	SB	04.04.17	
MKV.	VERNRN	TEKRN. NR.	BREYT.
1:50	14014	1 - 1107	

Ferill ehf. Mörkin 1 108 Reykjavík Sími: 575 1600 Fax: 575 1601 www.ferill.is