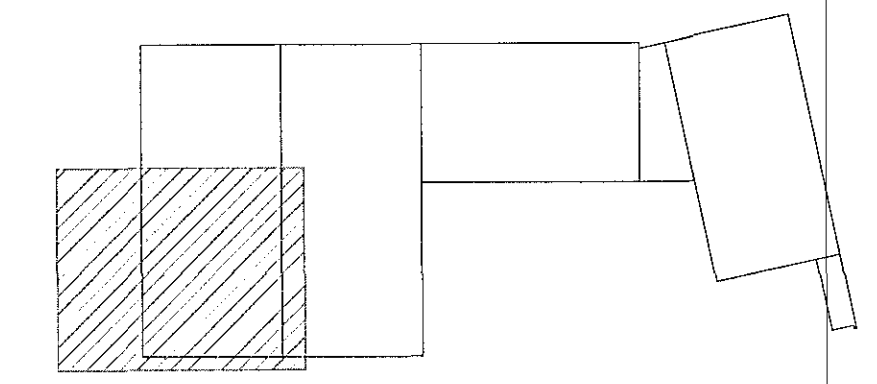
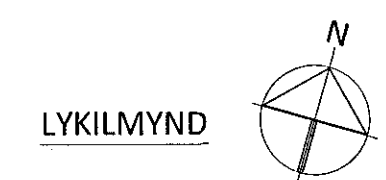


GENERAL NOTES:

- ALL UNITS ARE mm
- ALL ELEVATIONS ARE m
- ALL STEEL SHALL BE ACCORDING TO EN 1993-1-1:2005
- EXECUTION OF STEEL STRUCTURE SHALL BE ACCORDING TO EN 1090-2:2008
- STEEL GRADE OF MEMBERS SHALL GENERAL BE S235 EXCEPT CROSS BRACING (SHS100x5) SHALL BE STEEL GRADE S355
- ALL BOLTS SHALL BE IN CLASS 8.8
- SURFACE TREATMENT OF ALL STEEL SHALL BE ACCORDING TO CORROSION CATEGORY C3. STEEL SHALL BE PAINTED WITH PRIME COAT AND ON TOP OF THAT TWO LAYERS OF APPROPRIATE PAINT OF DARK GRAY COLOR (RAL 7016, GLOSS 35-40%) MINIMUM THICKNESS SHALL BE 100µm. PAINT SYSTEM SHALL BE APPROVED BY FERILL.
- C-SECTIONS ACCORDING TO METSEL PRODUCTION



ÁRITUN ABALLHÖFUNDAR *Ólafur* KT. *04.05.2015*

BR.	DAGS.	BREYTING	SAMP.



**FLUGVELLIR 1** HAFNARFIRÐI  
 NYBYGGING  
 BURDARVIRKI  
 PLATA YFIR 2. HÆÐ  
 GRUNNMYND

SAMÞYKKT: *Þorri* KT. 760172-3879

HÖNNUÐJUR	YFIRFARIR	DAGS. ÚTÍ	DAGS. BREYT.
ÞÓ	SB	04.04.17	
MVV.	VERKFR.	TEKNI. NÚ.	BREYT.
1:50	14014	1 - 1207	

Ferill ehf. Mörkin 1 108 Reykjavík Sími: 575 1600 Fax: 575 1601 www.ferill.is