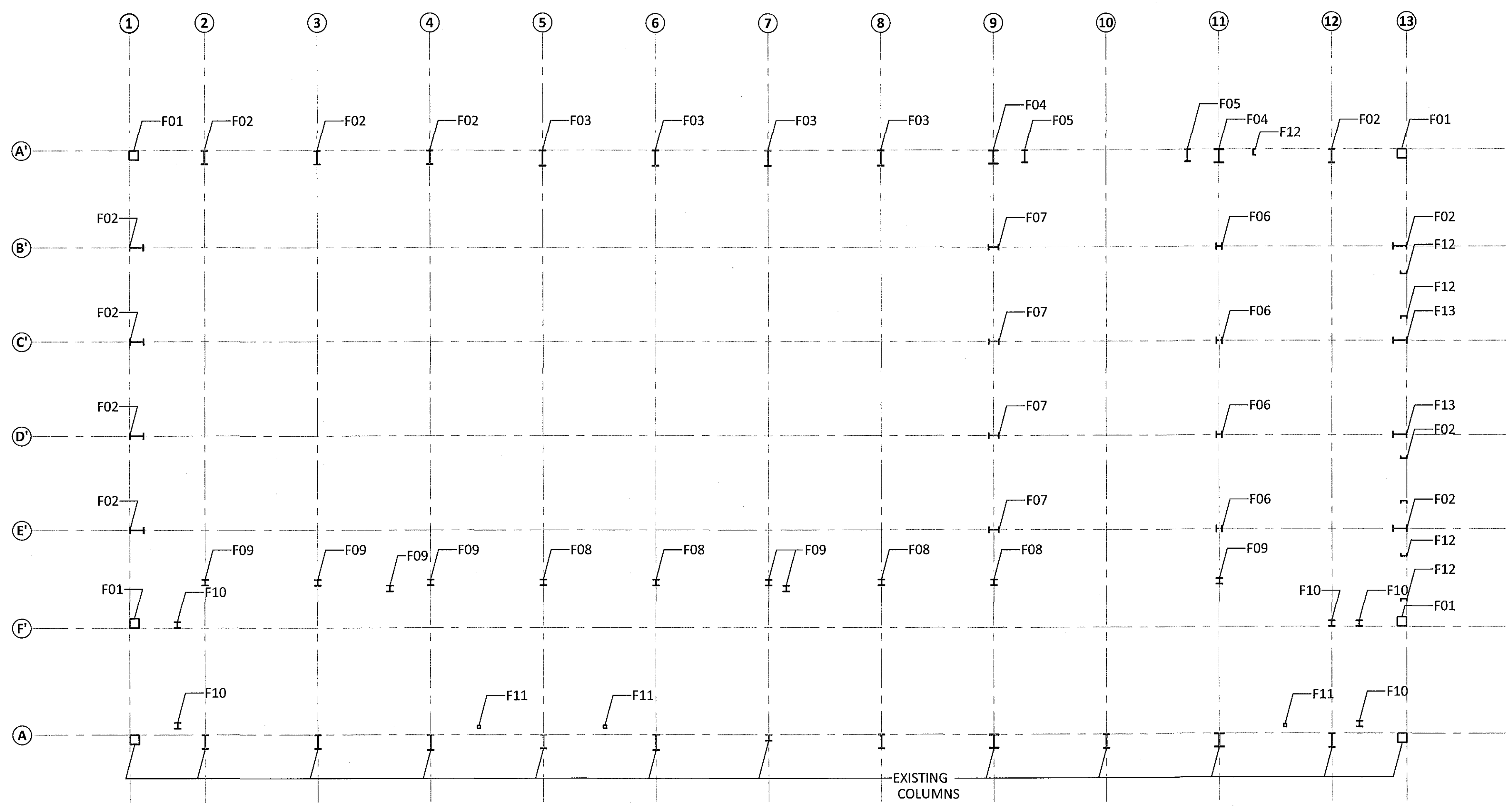
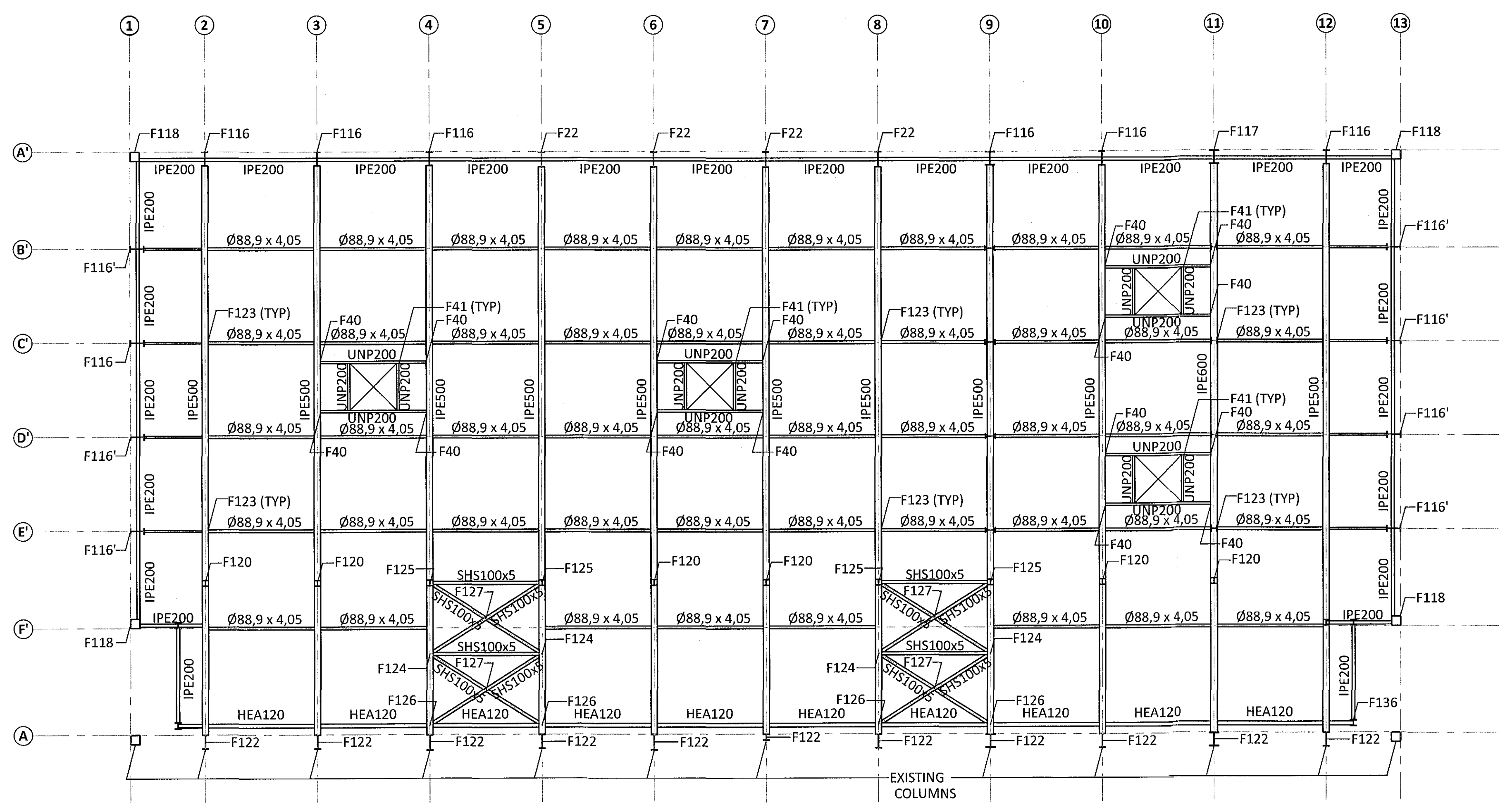


BASE PLAN SC1:100



ROOF PLAN SC1:100



GENERAL NOTES:

- ALL UNITS ARE mm
- ALL ELEVATIONS ARE m
- ALL STEEL SHALL BE ACCORDING TO EN 1993-1-1:2005
- EXECUTION OF STEEL STRUCTURE SHALL BE ACCORDING TO EN 1090-2:2008
- STEEL GRADE OF MEMBERS SHALL IN GENERAL BE S235 EXCEPT CROSS BRACING (SHS100x5) SHALL BE STEEL GRADE S355
- ALL BOLTS SHALL BE IN CLASS 8.8
- SURFACE TREATMENT OF ALL STEEL SHALL BE ACCORDING TO CORROSION CATEGORY C3. STEEL SHALL BE PAINTED WITH PRIME COAT AND ON TOP OF THAT TWO LAYERS OF APPROPRIATE PAINT OF DARK GRAY COLOR (RAL 7016, GLOSS 35-40%) MINIMUM THICKNESS SHALL BE 100µm. PAINT SYSTEM SHALL BE APPROVED BY FERILL.

*Olafur* 25.10.17

REV.	DATE	DESCRIPTION	APPR.

**ferill**

**FLUGVELLIR 1** HAFNARFIRÐI  
FLIGHT SIMULATOR BUILDING  
STEEL STRUCTURE  
BASE AND ROOF  
PLAN VIEW

APPROVED: *[Signature]* 2601710 N879

DESIGNED PÓ thorri@ferill.is	CHECKED SB	DATE 04.04.17	REV. DATE
SCALE 1:100	PROJECT No. 14014	DWG. No. 1 - 2500	REV.

Ferill ehf. Mörkin 1 108 Reykjavík Íceland Tel: +354 575 1600 www.ferill.is