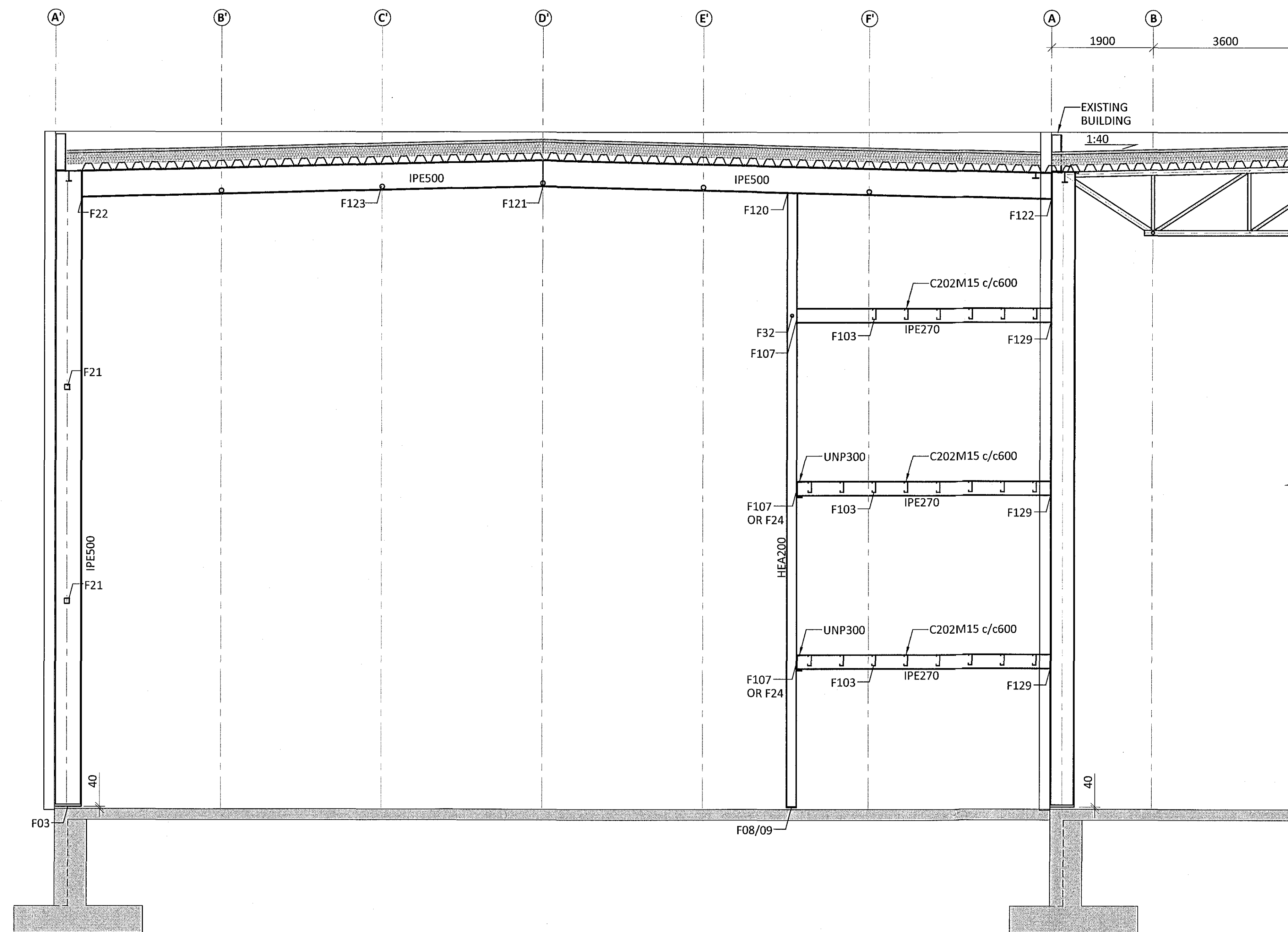


Samþykkt þann
26 MAJ 2017
Byggingarfulltrúinn í Hafnarfirði
F. H. Sigurður Steinar Jónsson

SECTION VIEW GRIDLINES 6,7 AND 8 SC1:50



GENERAL NOTES:

- ALL UNITS ARE mm
- ALL ELEVATIONS ARE m
- ALL STEEL SHALL BE ACCORDING TO EN 1993-1-1:2005
- EXECUTION OF STEEL STRUCTURE SHALL BE ACCORDING TO EN 1090-2-2008
- STEEL GRADE OF MEMBERS SHALL IN GENERAL BE S235 EXCEPT CROSS BRACING (SHS100x5) SHALL BE STEEL GRADE S355
- ALL BOLTS SHALL BE IN CLASS 8.8
- SURFACE TREATMENT OF ALL STEEL SHALL BE ACCORDING TO CORROSION CATEGORY C3. STEEL SHALL BE PAINTED WITH PRIME COAT AND ON TOP OF THAT TWO LAYERS OF APPROPRIATE PAINT OF DARK GRAY COLOR (RAL 7016, GLOSS 35-40%) MINIMUM THICKNESS SHALL BE 100µm. PAINT SYSTEM SHALL BE APPROVED BY FERILL.

Edur on 05.1.2019

REV.	DATE	DESCRIPTION	APPR.

ferill

FLUGVELLIR 1 HAFNARFIRÐI
FLIGHT SIMULATOR BUILDING
STEEL STRUCTURE
WALLS
ELEVATION GRIDLINE 6, 7 AND 8

APPROVED: *[Signature]* 2019-02-28

DESIGNED	CHECKED	DATE	REV. DATE
DÓ	SB	04.04.17	
SCALE	PROJECT No.	DWG. No.	REV.
1:50	14014	1 - 2516	

Ferill ehf. Mörkin 1 108 Reykjavík Iceland Tel: +354 575 1600 www.ferill.is