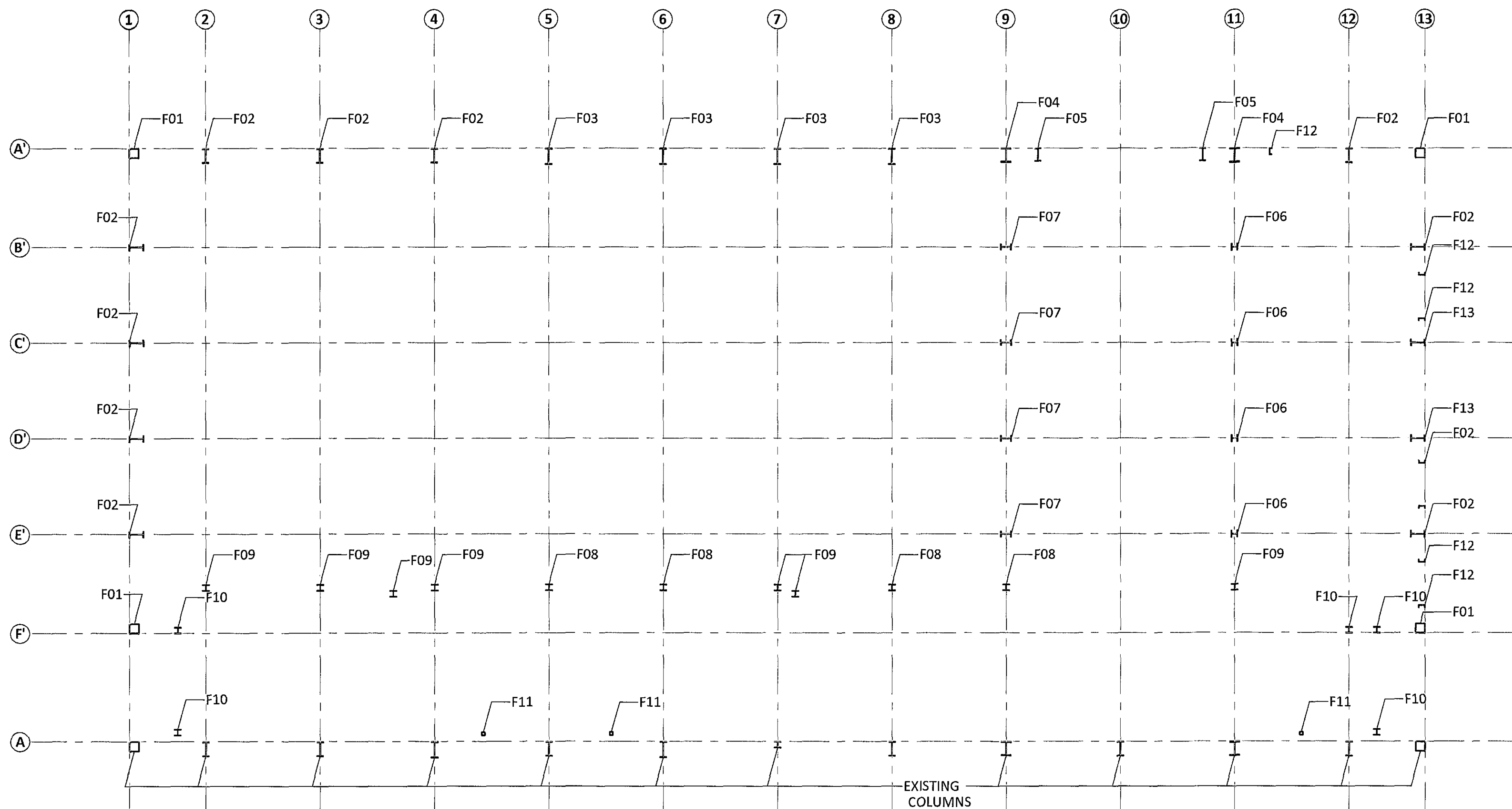
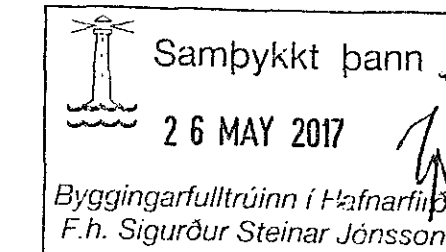
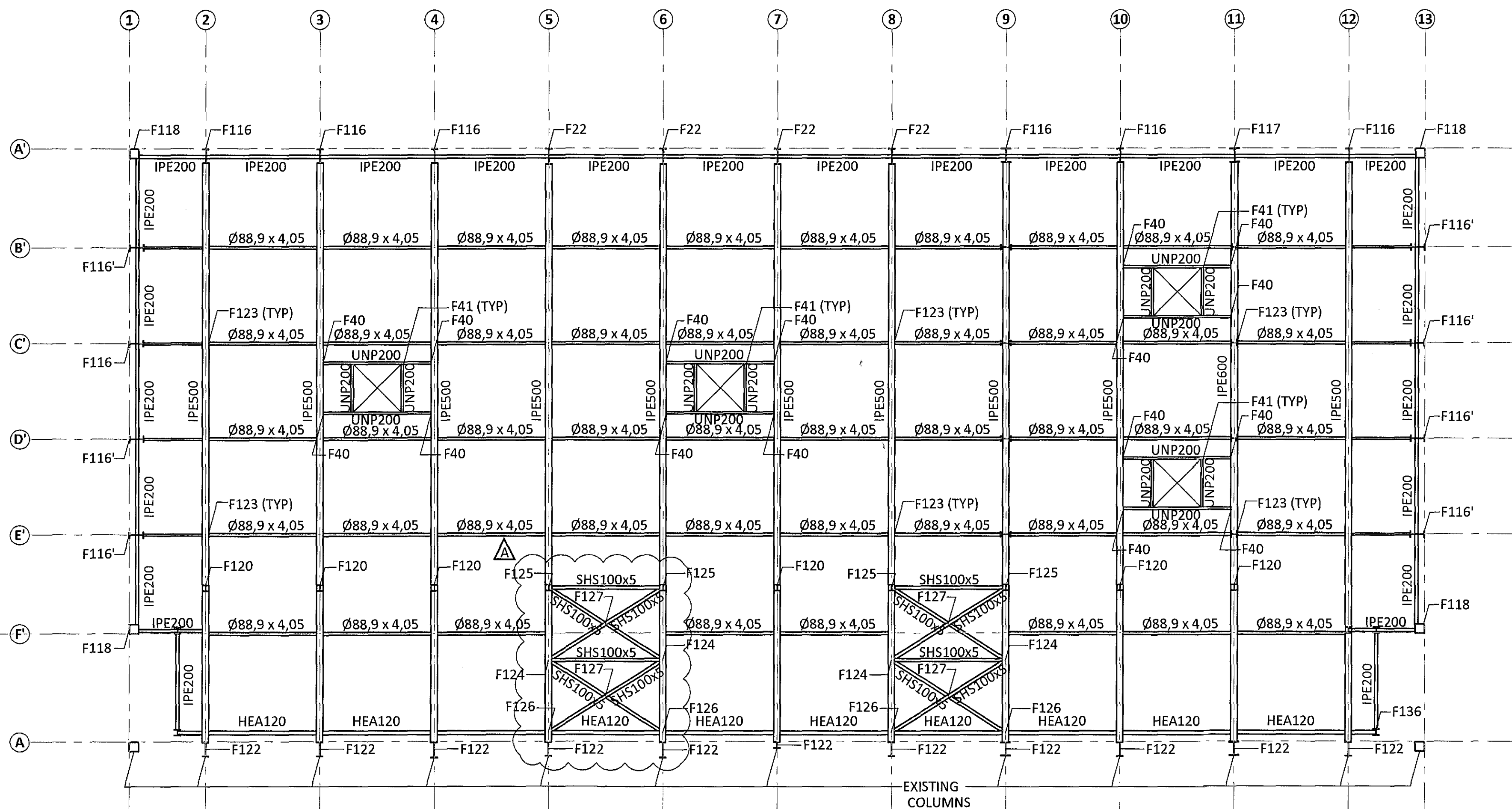


BASE PLAN SC1:100



ROOF PLAN SC1:100



GENERAL NOTES:

- ALL UNITS ARE mm
- ALL ELEVATIONS ARE m
- ALL STEEL SHALL BE ACCORDING TO EN 1993-1-1:2005
- EXECUTION OF STEEL STRUCTURE SHALL BE ACCORDING TO EN 1090-2:2008
- STEEL GRADE OF MEMBERS SHALL IN GENERAL BE S235 EXCEPT CROSS BRACING (SHS100x5) SHALL BE STEEL GRADE S355
- ALL BOLTS SHALL BE IN CLASS 8.8
- SURFACE TREATMENT OF ALL STEEL SHALL BE ACCORDING TO CORROSION CATEGORY C3. STEEL SHALL BE PAINTED WITH PRIME COAT AND ON TOP OF THAT TWO LAYERS OF APPROPRIATE PAINT OF DARK GRAY COLOR (RAL 7016, GLOSS 35-40%) MINIMUM THICKNESS SHALL BE 100µm. PAINT SYSTEM SHALL BE APPROVED BY FERILL.

*Ólafur 01.05.2015*

REV	DATE	DESCRIPTION	APPR.
A	03.05.17	CROSS BRACES MOVED	

**ferill**

**FLUGVELLIR 1** HAFNARFIRÐI  
 FLIGHT SIMULATOR BUILDING  
 STEEL STRUCTURE  
 BASE AND ROOF  
 PLAN VIEW

APPROVED: *[Signature]* ID No. *[Signature]*  
 DESIGNED: PÓ thorr@ferill.is CHECKED: SB 360173-360174 DATE: 04.04.17 REV DATE: 03.05.17  
 SCALE: 1:100 PROJECT No. 14014 DWG. No. 1 - 2500 REV. A

Ferill ehf. Mörkin 1 108 Reykjavík Íceland Tel: +354 575 1600 www.ferill.is