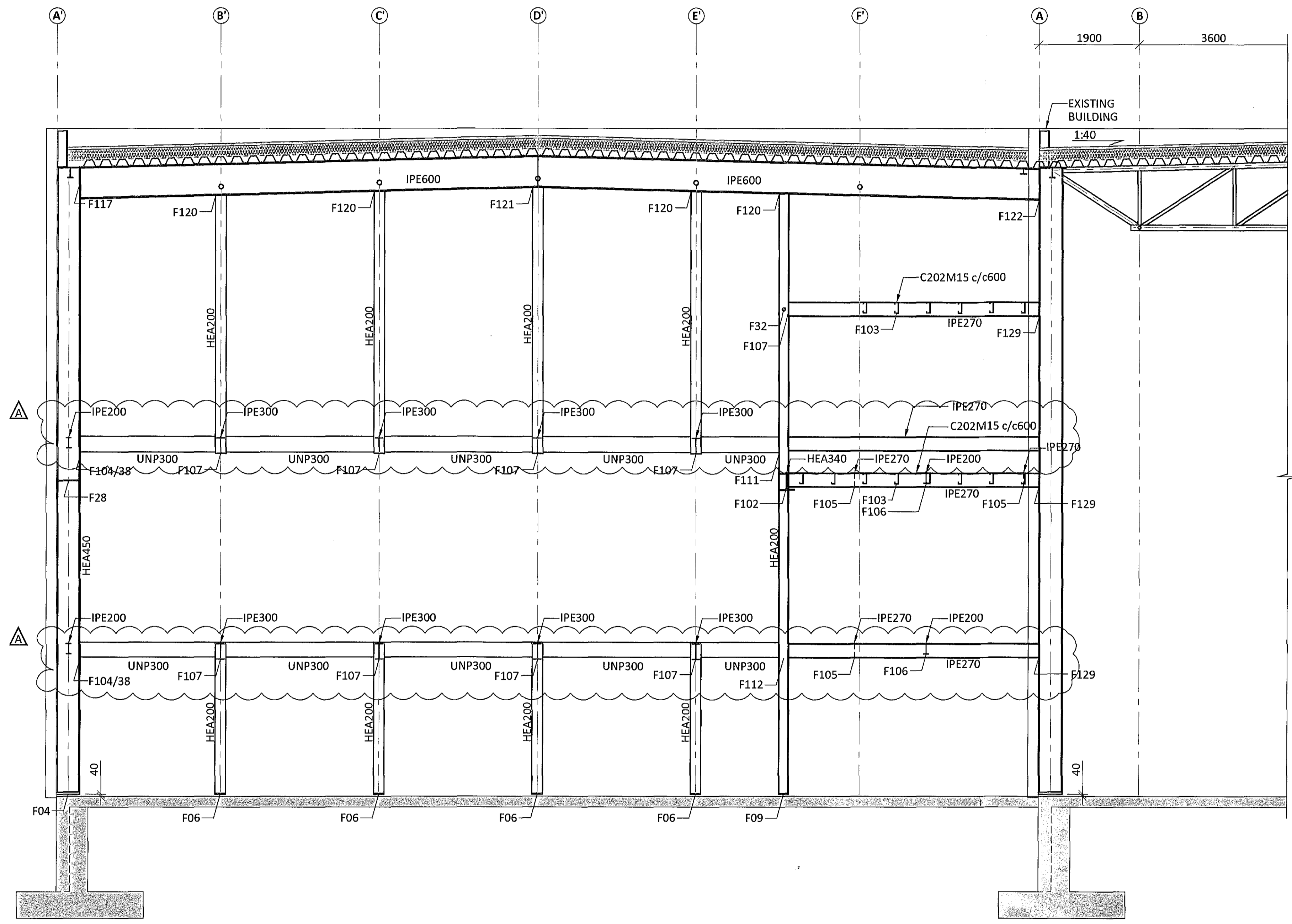


SECTION VIEW GRIDLINE 11 SC1:50



GENERAL NOTES:

- ALL UNITS ARE mm
- ALL ELEVATIONS ARE m
- ALL STEEL SHALL BE ACCORDING TO EN 1993-1-1:2005
- EXECUTION OF STEEL STRUCTURE SHALL BE ACCORDING TO EN 1090-2:2008
- STEEL GRADE OF MEMBERS SHALL IN GENERAL BE S235 EXCEPT CROSS BRACING (SHS100x5) SHALL BE STEEL GRADE S355
- ALL BOLTS SHALL BE IN CLASS 8.8
- SURFACE TREATMENT OF ALL STEEL SHALL BE ACCORDING TO CORROSION CATEGORY C3. STEEL SHALL BE PAINTED WITH PRIME COAT AND ON TOP OF THAT TWO LAYERS OF APPROPRIATE PAINT OF DARK GRAY COLOR (RAL 7016, GLOSS 35-40%) MINIMUM THICKNESS SHALL BE 100µm. PAINT SYSTEM SHALL BE APPROVED BY FERILL.

Olufur *Olufur*

REV	DATE	DESCRIPTION	APPR.
A	03.05.17	UNP300 PROFILES RAISED BY 25mm	

ferill

FLUGVELLIR 1 HAFNARFIRÐI
FLIGHT SIMULATOR BUILDING
STEEL STRUCTURE
WALLS
ELEVATION GRIDLINE 11

APPROVED: *[Signature]* 210182-3879

DESIGNED	CHECKED	DATE	REV. DATE
PÓ	SB	04.04.17	03.05.17
SCALE	PROJECT No.	DWG. No.	REV.
1:50	14014	1 - 2514	A

Ferill ehf Mörkin 1 108 Reykjavík Iceland Tel: +354 575 1600 www.ferill.is