

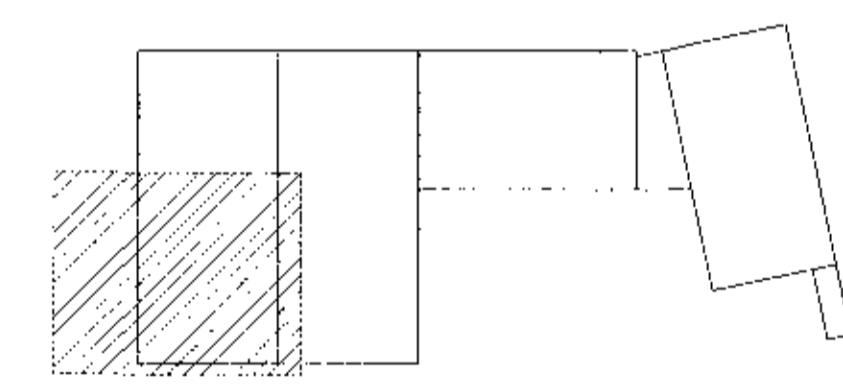
ARZUN BYGGINGARFULLTRÖA
1703047 01.10.2017

Sambýkkt þann
20 OCT 2017
Þrjúgáruhluturinn í Hafnarfirði
A. Sævarður Símonsson

GENERAL NOTES:

- ALL UNITS ARE mm
- ALL ELEVATIONS ARE m
- ALL STEEL SHALL BE ACCORDING TO EN 1993-1-1:2005
- EXECUTION OF STEEL STRUCTURE SHALL BE ACCORDING TO EN 1090-2:2008
- STEEL GRADE OF MEMBERS SHALL GENERAL BE S235 EXCEPT CROSS BRACING (SHS100x5) SHALL BE STEEL GRADE S355
- ALL BOLTS SHALL BE IN CLASS 8.8
- SURFACE TREATMENT OF ALL STEEL SHALL BE ACCORDING TO CORROSION CATEGORY C3. STEEL SHALL BE PAINTED WITH PRIME COAT AND ON TOP OF THAT TWO LAYERS OF APPROPRIATE PAINT OF DARK GRAY COLOR (RAL 7016, GLOSS 35-40%) MINIMUM THICKNESS SHALL BE 100µm. PAINT SYSTEM SHALL BE APPROVED BY FERILL.
- C-SECTIONS ACCORDING TO METSEL PRODUCTION

LYKILMYND



AMTUNARSKILNINGAR KT.
04251-2-19

A 26.09.17 MILLIGÓLF FRAMLÆNGT			
BR.	DAGS.	BREYTING	SAMP.



FLUGVELLIR 1 HAFNARFIRDI
NÝBYGGING
BURÐARVIRKI
PLATA YFIR 1. HÆÐ
GRUNNMYND

SAMPYKKT		KT.	
ÞÖNNUNUMR.	YFIRFARID	DAGS. MTG.	DAGS. BREYT.
PÓ	SB	04.04.17	26.09.17
MKV.	VERKNR.	TEIKN. NÚL.	BREYTT.
1:50	14014	1 - 1107	A