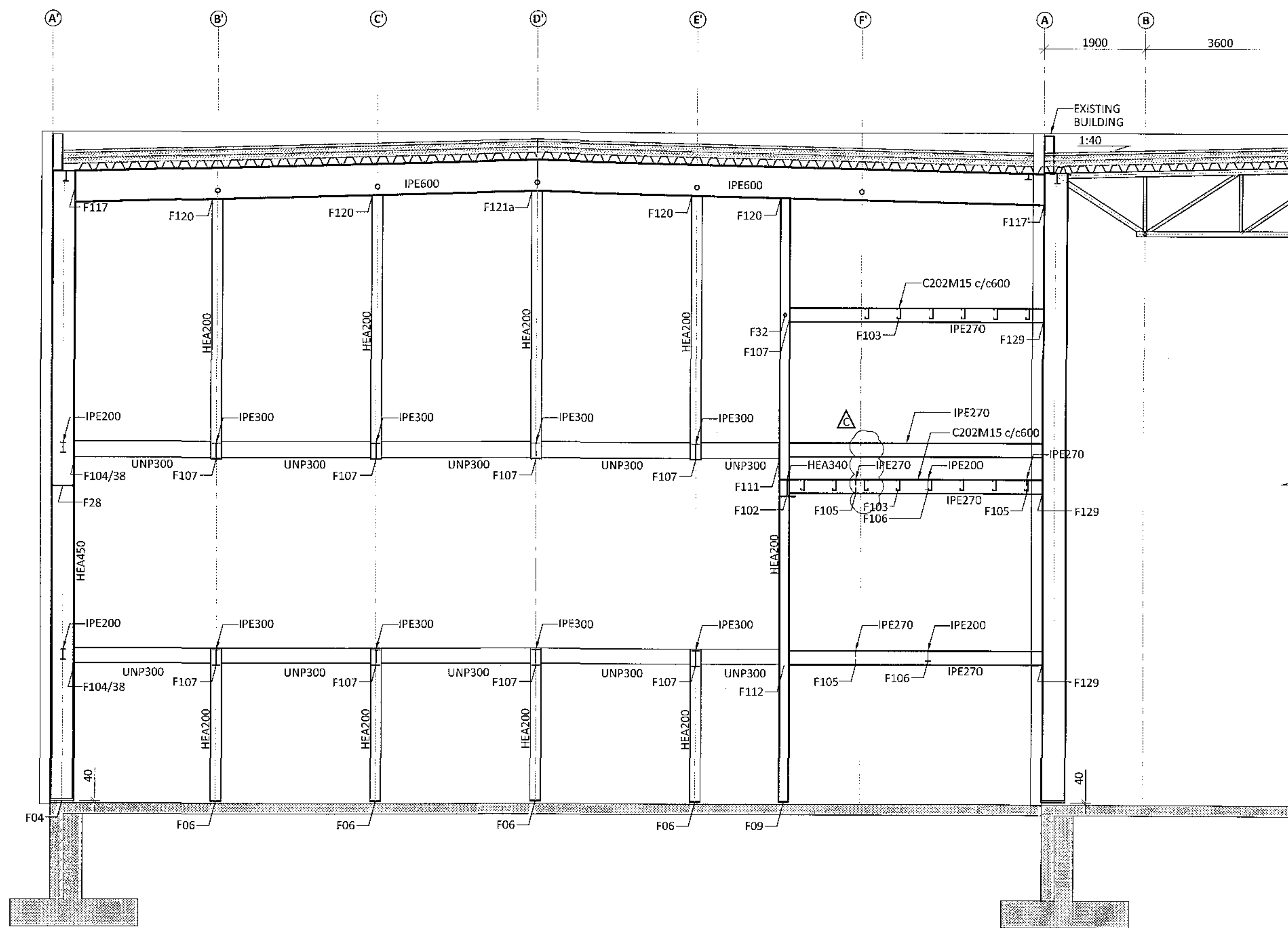


Samþykkt þann
20 OCT 2017
Byggingartekniðinn í Húna
F.h. Sigurður Steinar Jónsson

SECTION VIEW GRIDLINE 11 SC1:50



- GENERAL NOTES:
- ALL UNITS ARE mm
 - ALL ELEVATIONS ARE m
 - ALL STEEL SHALL BE ACCORDING TO EN 1993-1-1:2005
 - EXECUTION OF STEEL STRUCTURE SHALL BE ACCORDING TO EN 1090-2-2008
 - STEEL GRADE OF MEMBERS SHALL IN GENERAL BE S235 EXCEPT CROSS BRACING (SHS100x5) SHALL BE STEEL GRADE S355
 - ALL BOLTS SHALL BE IN CLASS 8.8
 - SURFACE TREATMENT OF ALL STEEL SHALL BE ACCORDING TO CORROSION CATEGORY C3. STEEL SHALL BE PAINTED WITH PRIME COAT AND ON TOP OF THAT TWO LAYERS OF APPROPRIATE PAINT OF DARK GRAY COLOR (RAL 7016, GLOSS 35-40%) MINIMUM THICKNESS SHALL BE 100µm. PAINT SYSTEM SHALL BE APPROVED BY FERILL

OMÓK 042513019

C	26.09.17	C-PROFILE TURN	
B	15.05.17	GENERAL CHANGES	
A	03.05.17	UNP300 PROFILES RAISED BY 25mm	
REV	DATE	DESCRIPTION	APPR.
ferill			
FLUGVELLIR 1		HAFNARFIRDI	
FLIGHT SIMULATOR BUILDING			
STEEL STRUCTURE			
WALLS			
ELEVATION GRIDLINE 11			
APPROVED:		ID No.	
DESIGNED:		DATE	
SCALE		PROJECT No.	
		DWG. No.	
		REV.	