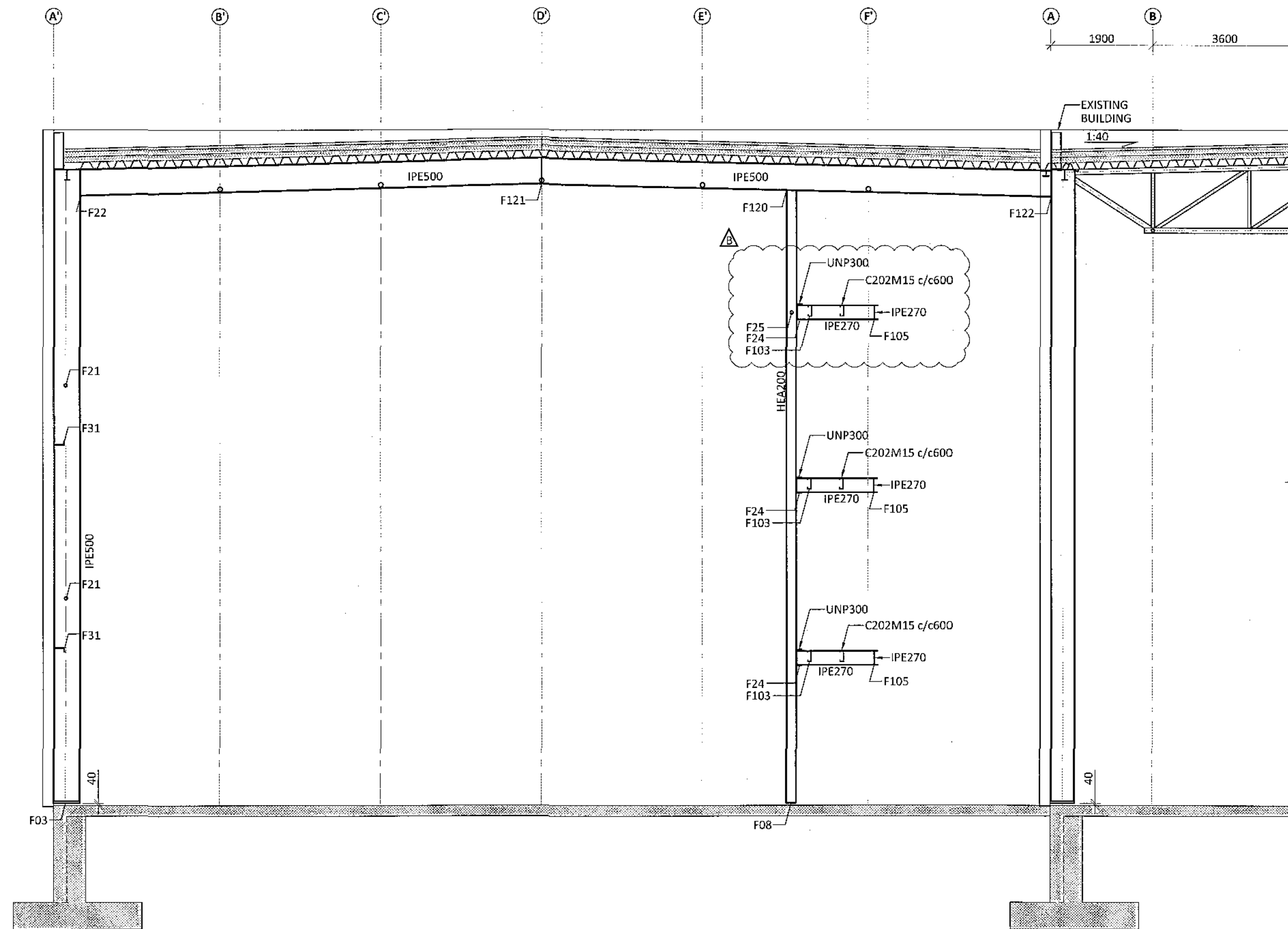


20. des. 2017
 1/15

SECTION VIEW GRIDLINE 5 SC1:50



GENERAL NOTES:

- ALL UNITS ARE mm
- ALL ELEVATIONS ARE m
- ALL STEEL SHALL BE ACCORDING TO EN 1993-1-1:2005
- EXECUTION OF STEEL STRUCTURE SHALL BE ACCORDING TO EN 1090-2-2008
- STEEL GRADE OF MEMBERS SHALL IN GENERAL BE S235 EXCEPT CROSS BRACING (SHS100x5) SHALL BE STEEL GRADE S355
- ALL BOLTS SHALL BE IN CLASS 8.8
- SURFACE TREATMENT OF ALL STEEL SHALL BE ACCORDING TO CORROSION CATEGORY C3. STEEL SHALL BE PAINTED WITH PRIME COAT AND ON TOP OF THAT TWO LAYERS OF APPROPRIATE PAINT OF DARK GRAY COLOR (RAL 7016, GLOSS 35-40%) MINIMUM THICKNESS SHALL BE 100µm. PAINT SYSTEM SHALL BE APPROVED BY FERILL.

ARITUN BYGGINGARFULLTRUA
 KT. *eyrsl. 2015*

B	27.11.17	GEYMSLUFOFTI BÆTTI VIÐ
A	03.05.17	UNP300 PROFILES RAISED BY 25mm
BR.	DAGS.	BREYTING

ferill
 VERKFRÆÐISTOFA

FLUGVELLIR 1 HAFNARFJÖRDUR
 FLIGHT SIMULATOR BUILDING
 STEEL STRUCTURE
 WALLS
 ELEVATION GRIDLINE 5

SAMÞYKKT: KT. *SD*

HÖNNUÐUR	YRFARID	DAGS. ÖTG.	DAGS. BREYT.
PÓ	SB	04.04.17	27.11.17
MKV. (A3)	VERNR.	TEKNI. NR.	BREYTI.
1:50	14014	1 - 2517	B

Ferill ehf. Mörkín 1 108 Reykjavík Sími: 575 1600 Fax: 575 1601 www.ferill.is