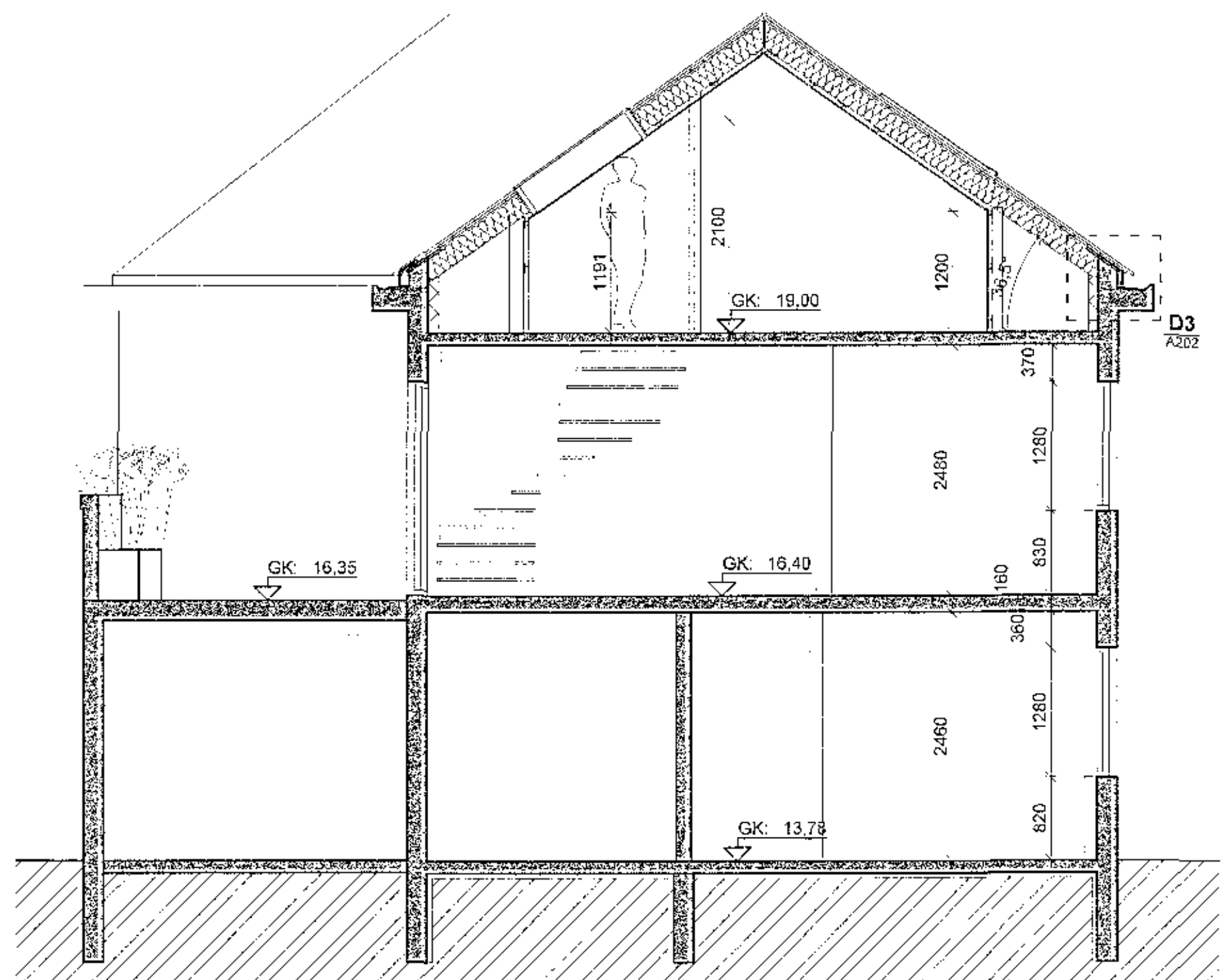
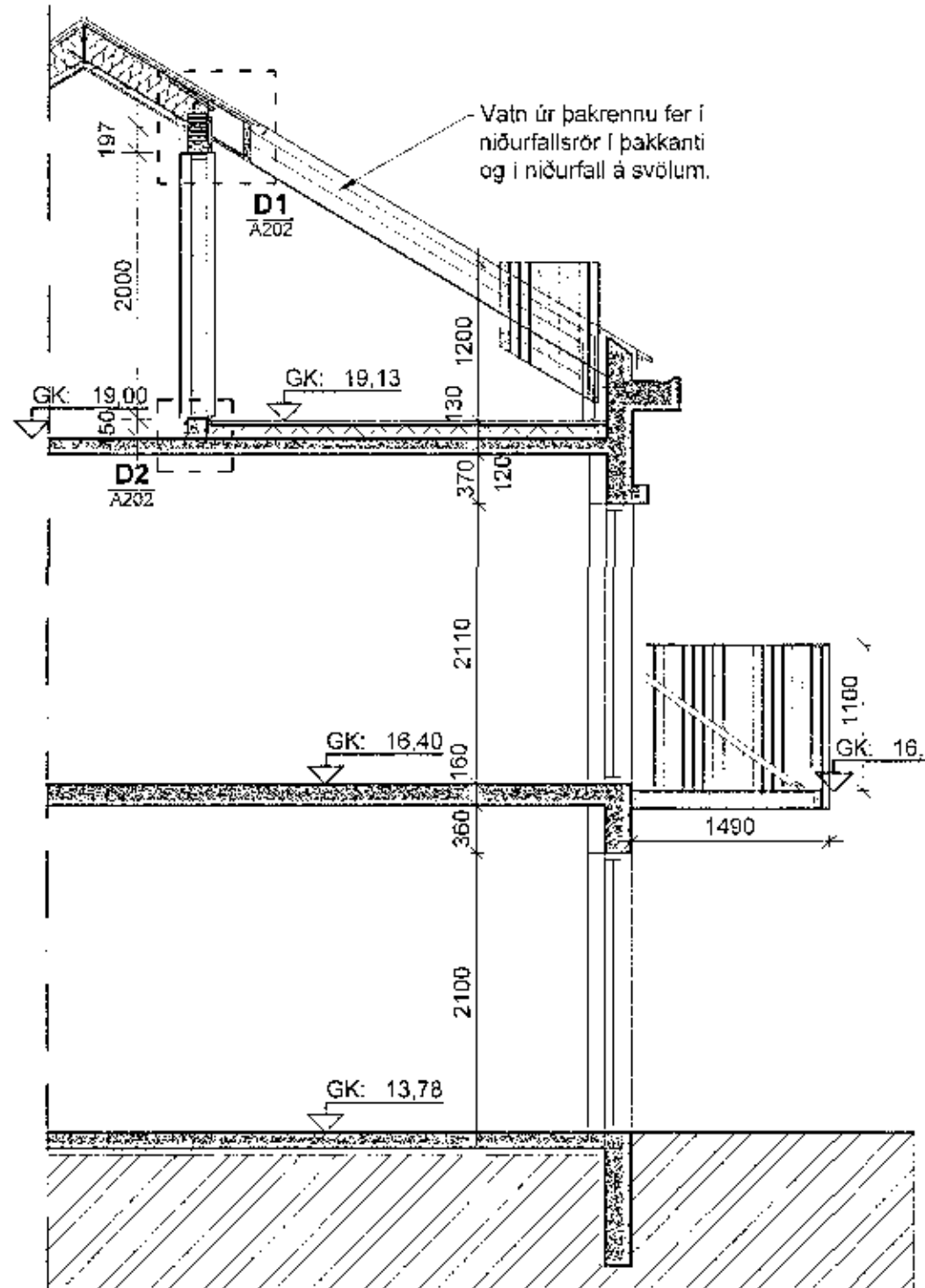


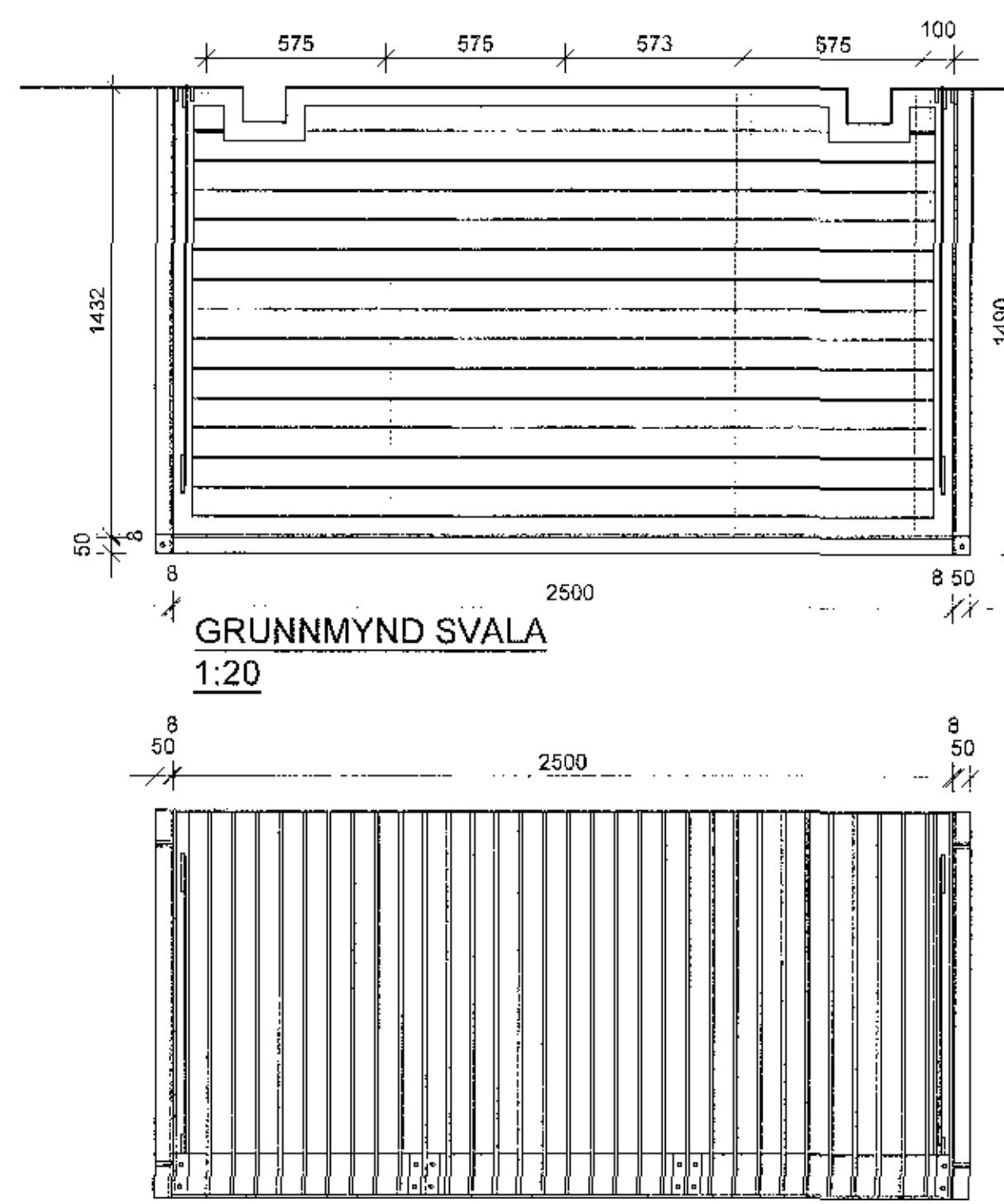
Sambærkt
28. des. 2017
Byggingarritun



SNEIÐING A-A
1:50

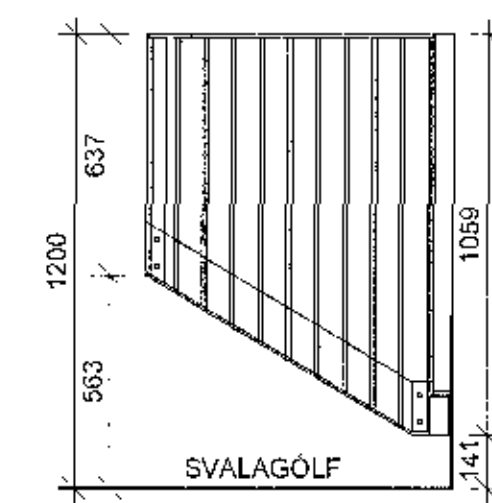


SNEIÐING A-A
1:50

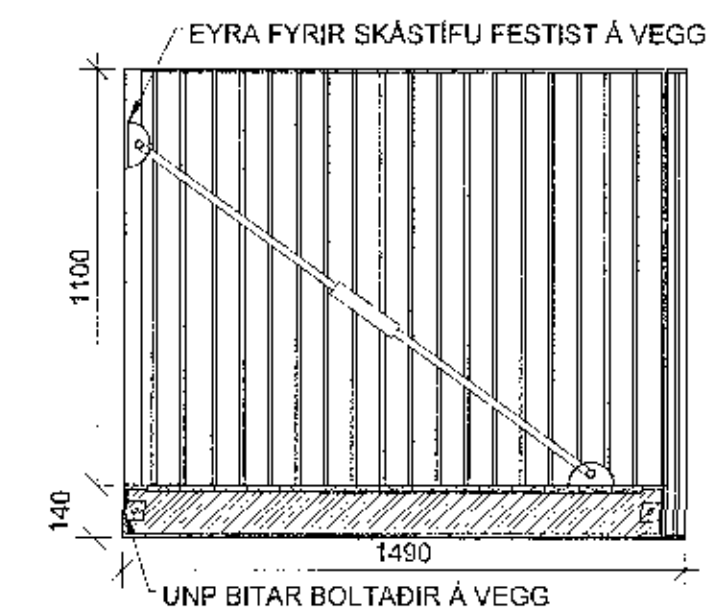


GRUNNMYND SVALA
1:20

ÚTLIT SVALA
1:20

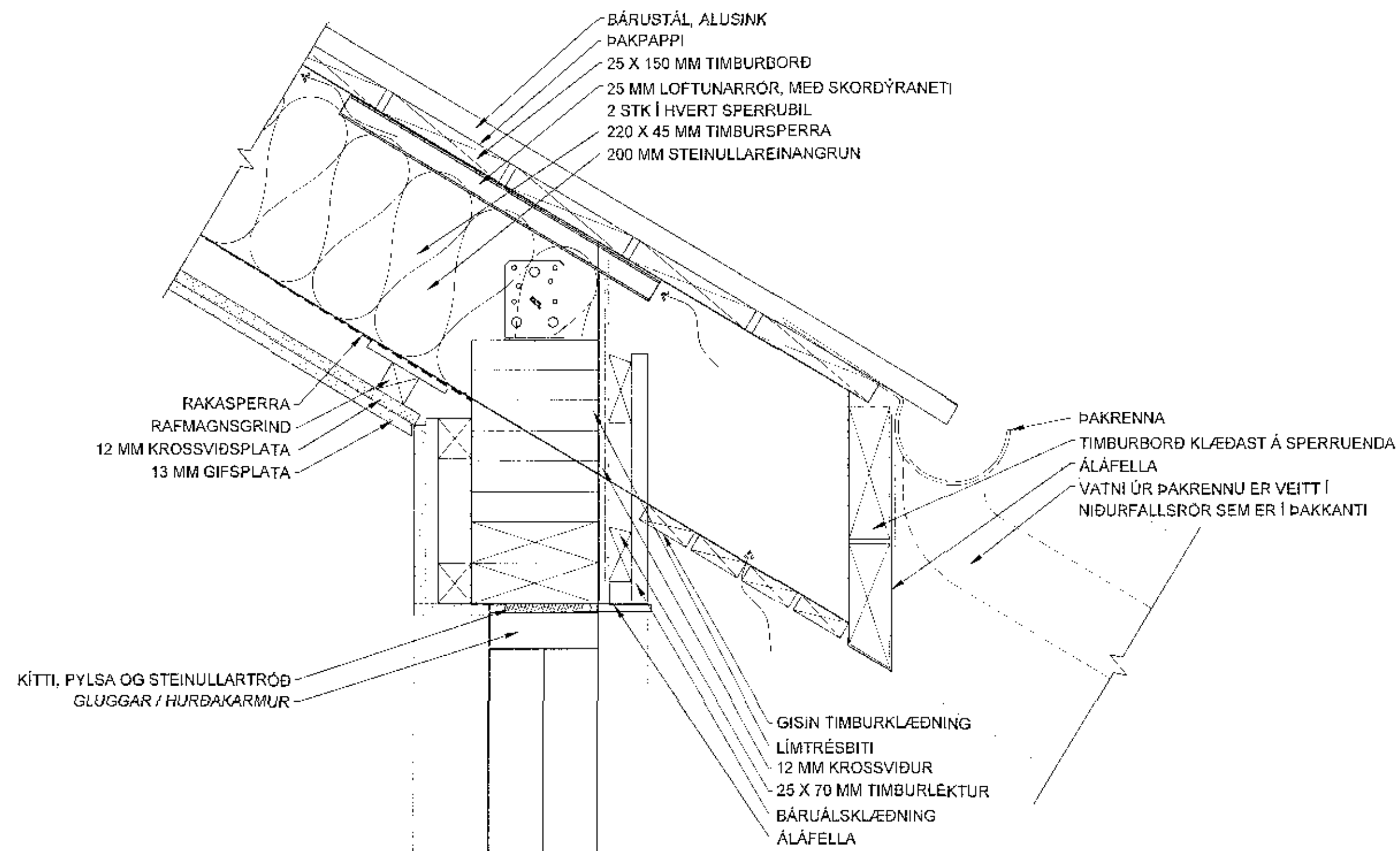


SVALAHANDRID Á 3. HÆÐ
1:20

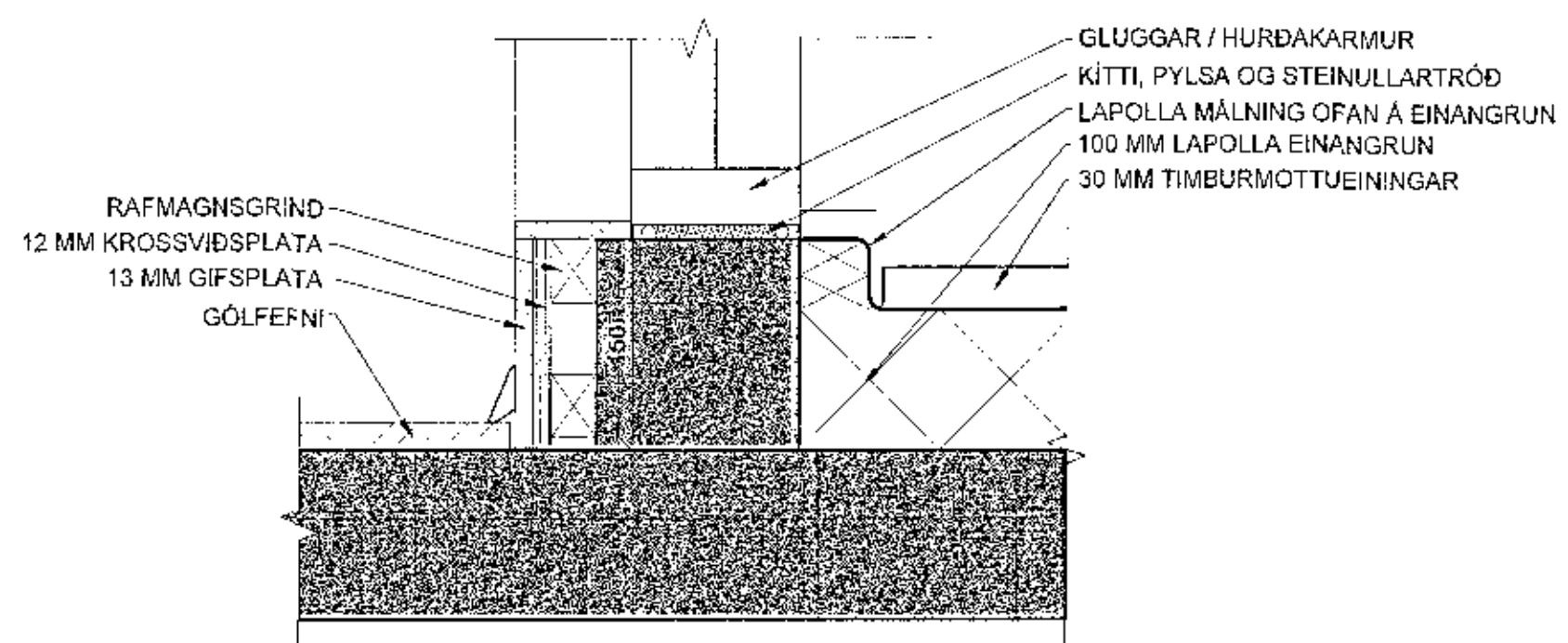


SNIÐ SVALA
1:20

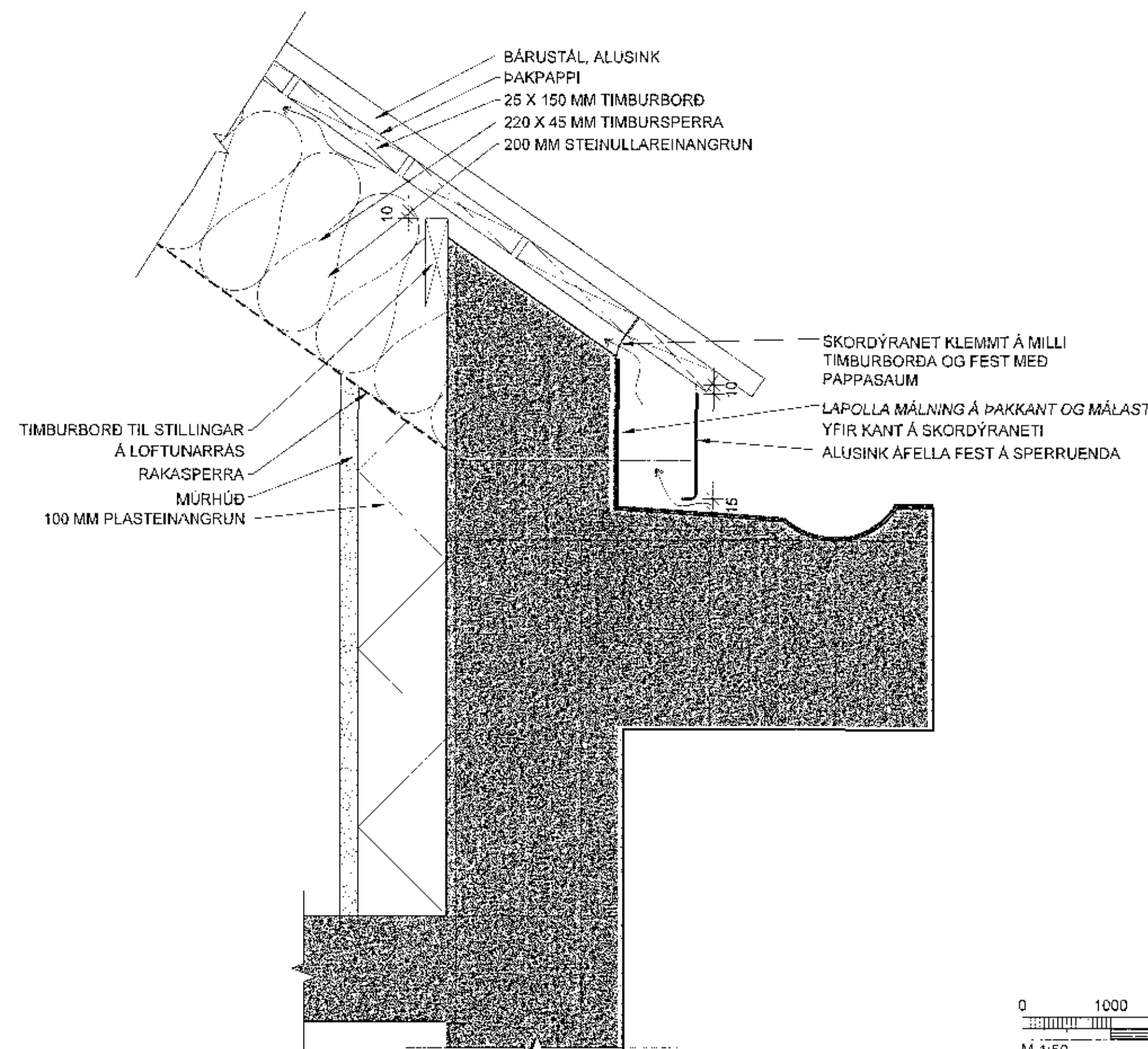
- FLATJÄRN 50 X 8 MM
- 12 MM RÚNJÄRN
- 120 X 45 MM GAGNVARÐIR TIMBURDEGARAR
- BOLTADIR Á EYRU SEM ERU Á UNP BITA
- UNP BITI 140 MM
- BOTNPLATA SKRÚFUÐ UPP Í TIMBUR
- BITA MEÐ HALLA AÐ HÚSI, VATN
- VEITIST Í NIÐURFALLSRÖR FRÁ ÞAKI



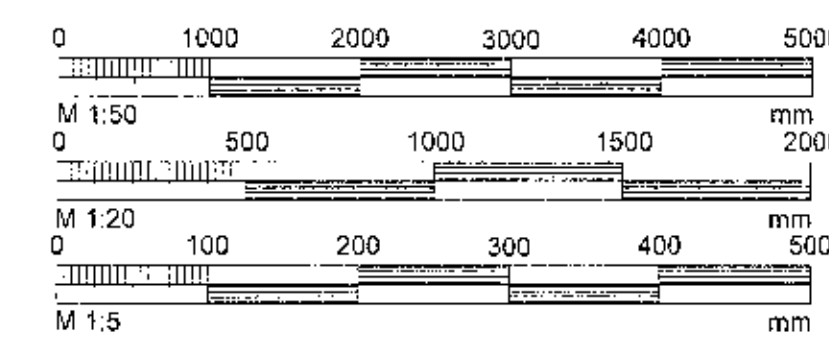
D1
1:5



D2
1:5



D3
1:5



BREYTT		28. des. 2017	
KIRKJUVEGUR 8b			
220 HAFNARFJÖRÐUR			
VINNUTEKNINGAR			
SNIÐ, HANÐRID OG DEILI			
Skjalnúmer	2017.12.01	Skjalnúmer	JL, KA, 11FF, KÁ, 11FF, BRE
Bláskjalnúmer	1643	Skjalnúmer	1:50, 1:20 OG 1:5
ALARK		arkitektar ehf.	
A202		A202	