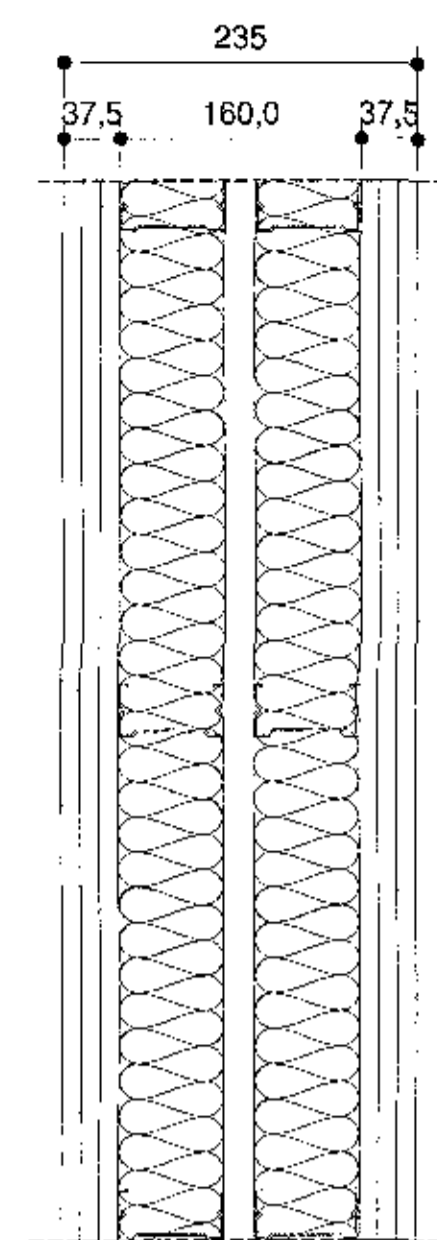
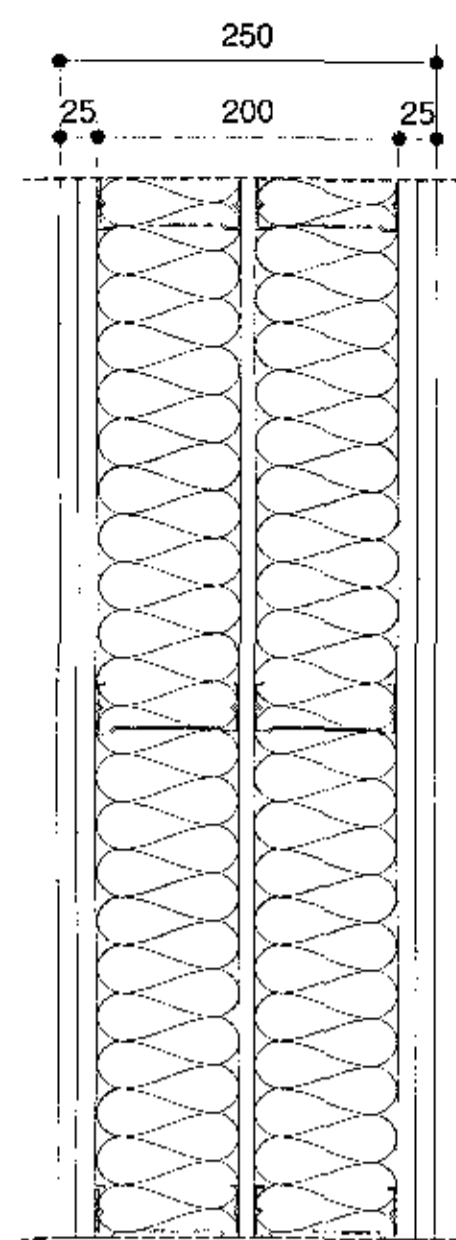


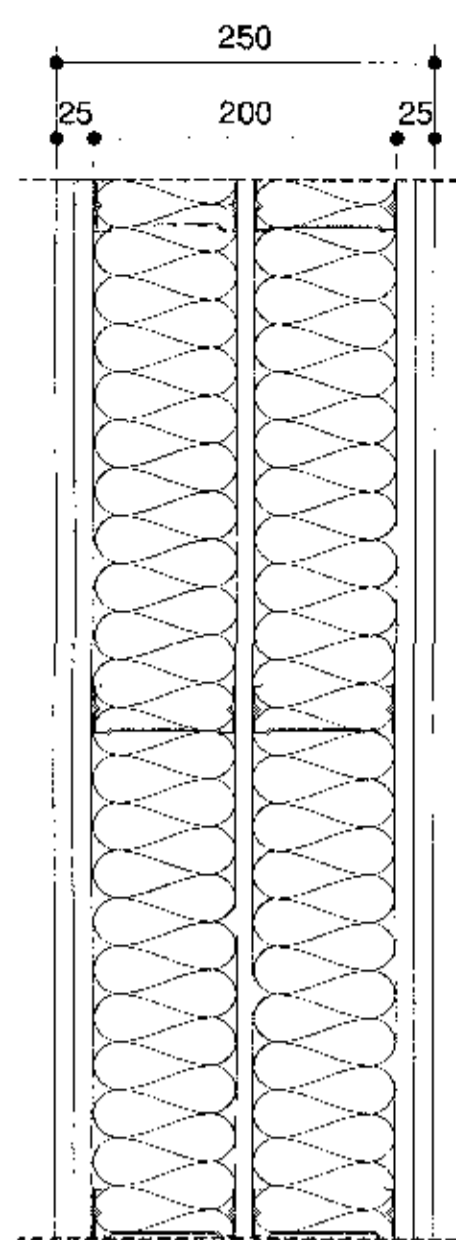
Samþykkt þann
28. des. 2017
Þryggingstulltraun 4/19/17



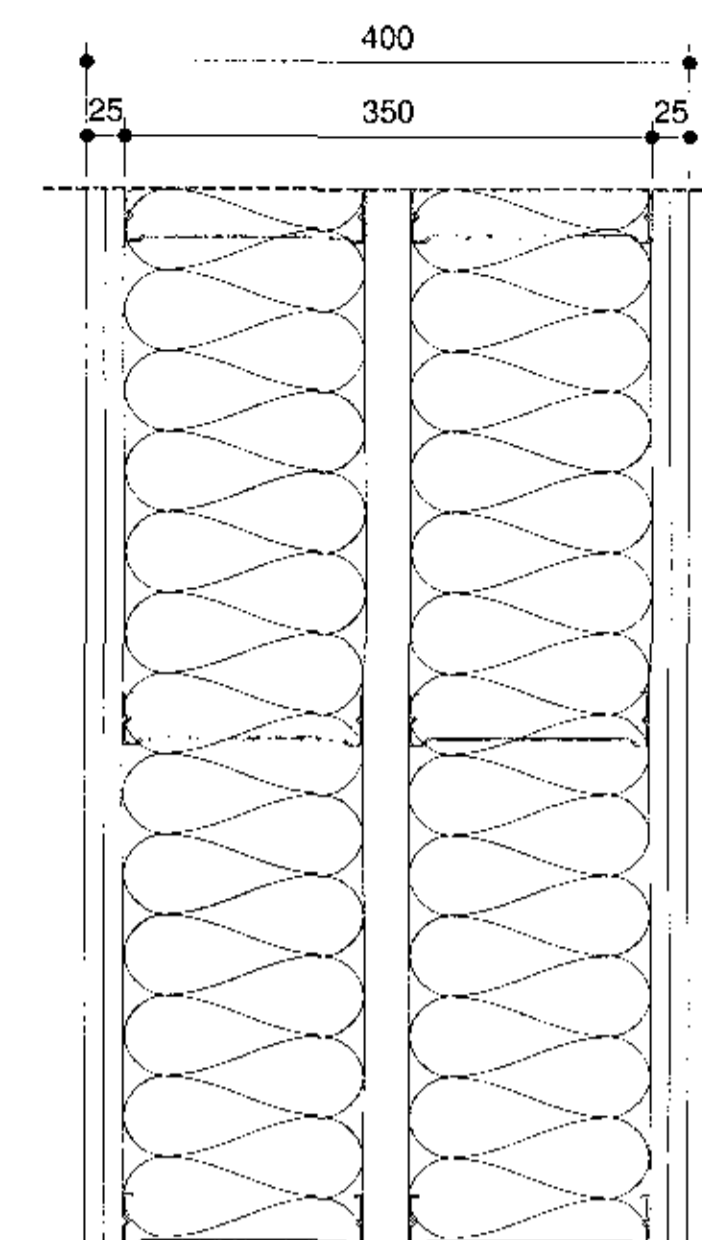
Nr.	IV-04.2
Heiti	IV-04.2 (235)
Brunakrafa	Ei60
Hljóðkrafa	R'w ≥ 60 dB
Hámarkshæð	4000 mm
Uppbygging	- 3 x 12,5 mm rakavarín gífsplata - 70 mm álprófilsgírnd c/c 600 mm, einangrunarfyllt - 20 mm loftbil - 70 mm álprófilsgírnd c/c 600 mm, einangrunarfyllt - 3 x 12,5 mm rakavarín gífsplata



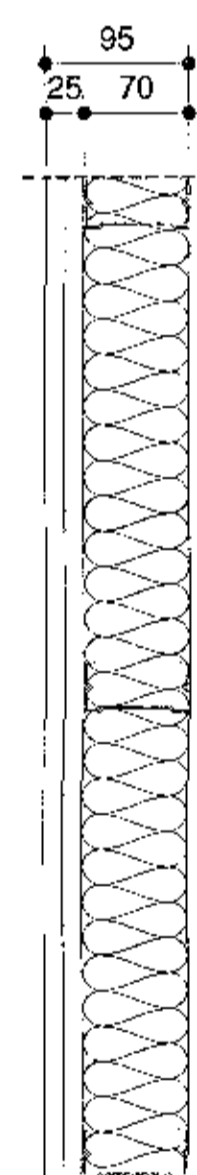
Nr.	IV-05
Heiti	IV-05 (250)
Brunakrafa	Ei60
Hljóðkrafa	R'w ≥ 48 dB
Hámarkshæð	4000 mm
Uppbygging	- 2 x 12,5 mm gífsplata - 95 mm álprófilsgírnd c/c 600 mm, einangrunarfyllt - 10 mm loftbil - 95 mm álprófilsgírnd c/c 600 mm, einangrunarfyllt - 2 x 12,5 mm gífsplata



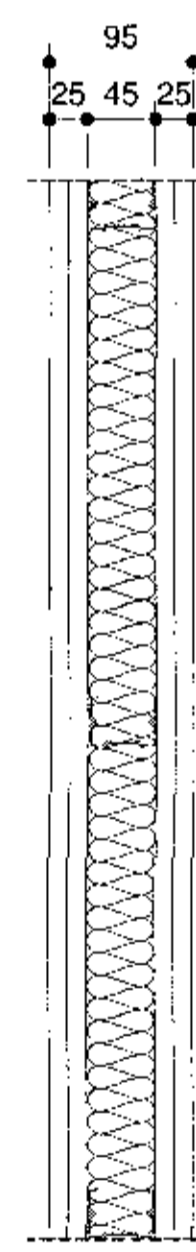
Nr.	IV-05.1
Heiti	IV-05.1 (250)
Brunakrafa	Ei60
Hljóðkrafa	R'w ≥ 48 dB
Hámarkshæð	4000 mm
Uppbygging	- 2 x 12,5 mm rakavarín gífsplata - 95 mm álprófilsgírnd c/c 600 mm, einangrunarfyllt - 10 mm loftbil - 95 mm álprófilsgírnd c/c 600 mm, einangrunarfyllt - 2 x 12,5 mm gífsplata



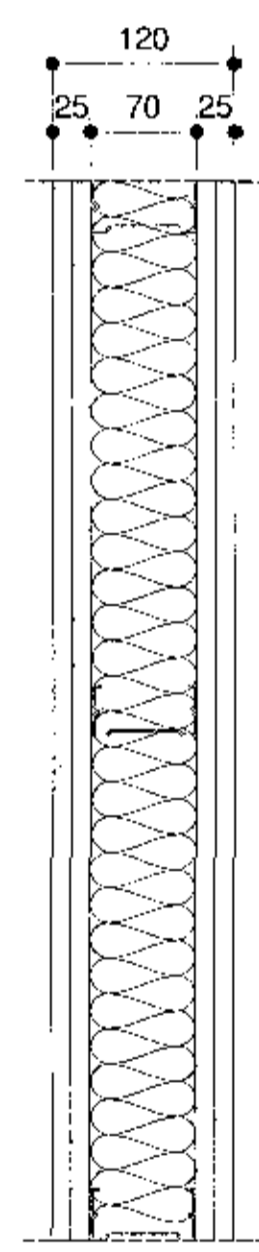
Nr.	IV-06
Heiti	IV-06 (400)
Brunakrafa	Ei
Hljóðkrafa	R'w ≥ 48 dB
Hámarkshæð	4000 mm
Uppbygging	- 2 x 12,5 mm rakavarín gífsplata - 160 mm álprófilsgírnd c/c 600 mm, einangrunarfyllt - 30 mm loftbil - 160 mm álprófilsgírnd c/c 600 mm, einangrunarfyllt - 2 x 12,5 mm rakavarín gífsplata



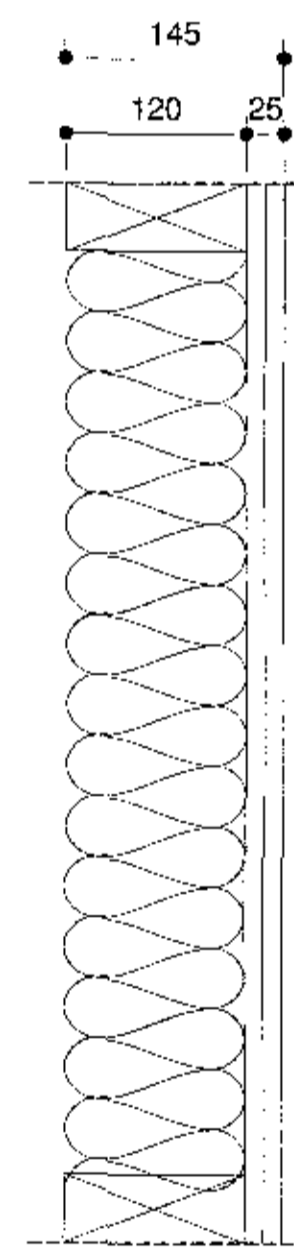
Nr.	IV-07
Heiti	IV-07 (95)
Brunakrafa	Ei
Hljóðkrafa	
Hámarkshæð	4000 mm
Uppbygging	- 2 x 12,5 mm gífsplata - 70 mm álprófilsgírnd c/c 600 mm, einangrunarfyllt



Nr.	IV-08
Heiti	IV-08 (95)
Brunakrafa	Ei
Hljóðkrafa	
Hámarkshæð	4000 mm
Uppbygging	- 2 x 12,5 mm rakavarín gífsplata - 45 mm álprófilsgírnd c/c 600 mm, einangrunarfyllt - 2 x 12,5 mm rakavarín gífsplata



Nr.	IV-09
Heiti	IV-09 (120)
Brunakrafa	Ei
Hljóðkrafa	
Hámarkshæð	4000 mm
Uppbygging	- 2 x 12,5 mm gífsplata - 70 mm álprófilsgírnd c/c 600 mm, einangrunarfyllt - 2 x 12,5 mm gífsplata



Nr.	IV-10
Heiti	IV-10 (120)
Brunakrafa	Ei
Hljóðkrafa	
Hámarkshæð	4000 mm
Uppbygging	- 2 x 12,5 mm rakavarín gífsplata (krossviðsstyrking v. salerni) - 120 mm timburgrind, einangrunarfyllt

BRÉYTINGAR

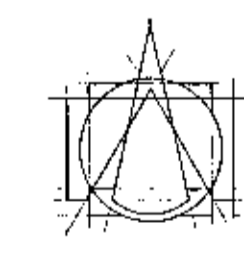
VEHAFJI
Hádegisskarð 1, Hafnarfirði
Skóli
Verkeiðningar

VERK
Innveggir 04.2-10

MÁL: 1 : 5 / A1
MÁNNAFUR: ISC
VEHAFARIN: Svági
VERKNUMER: 484-02

DAÐS: 31.10.2017
JULINNAÐ: IT
TEKINGARUMER: 019

04 3.1-02



Tark

ARKITEKTAR
BRAUTARHOGLI 6 - 105 REYKJAVÍK - ÍSLAND
Sími: 540 5700
leiknolun@tark.is
www.tark.is

Sn. S. G. G.

SMMP: Ivon Stefán Gísla Arkitekt FAI FSSA KL: 141155-4159

© Allt og allt tekið upp, að hluta eða í heild, er lið samþykkingarinnar, skv. ávarðunum höfundanna.