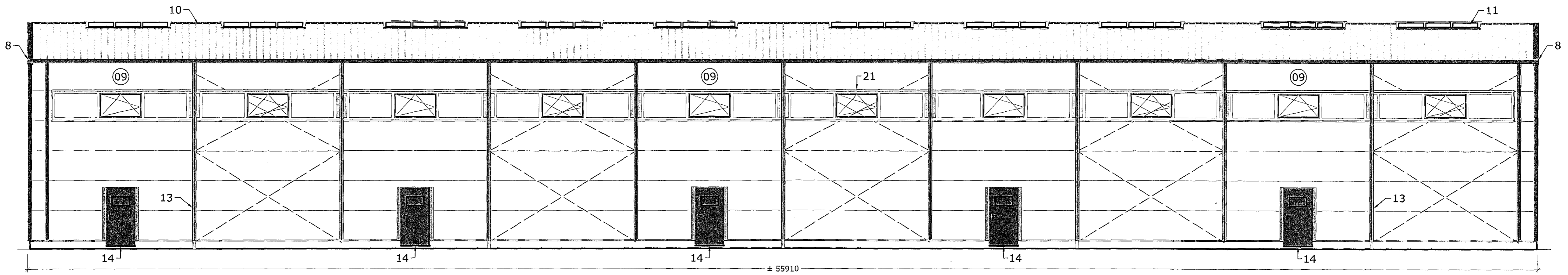
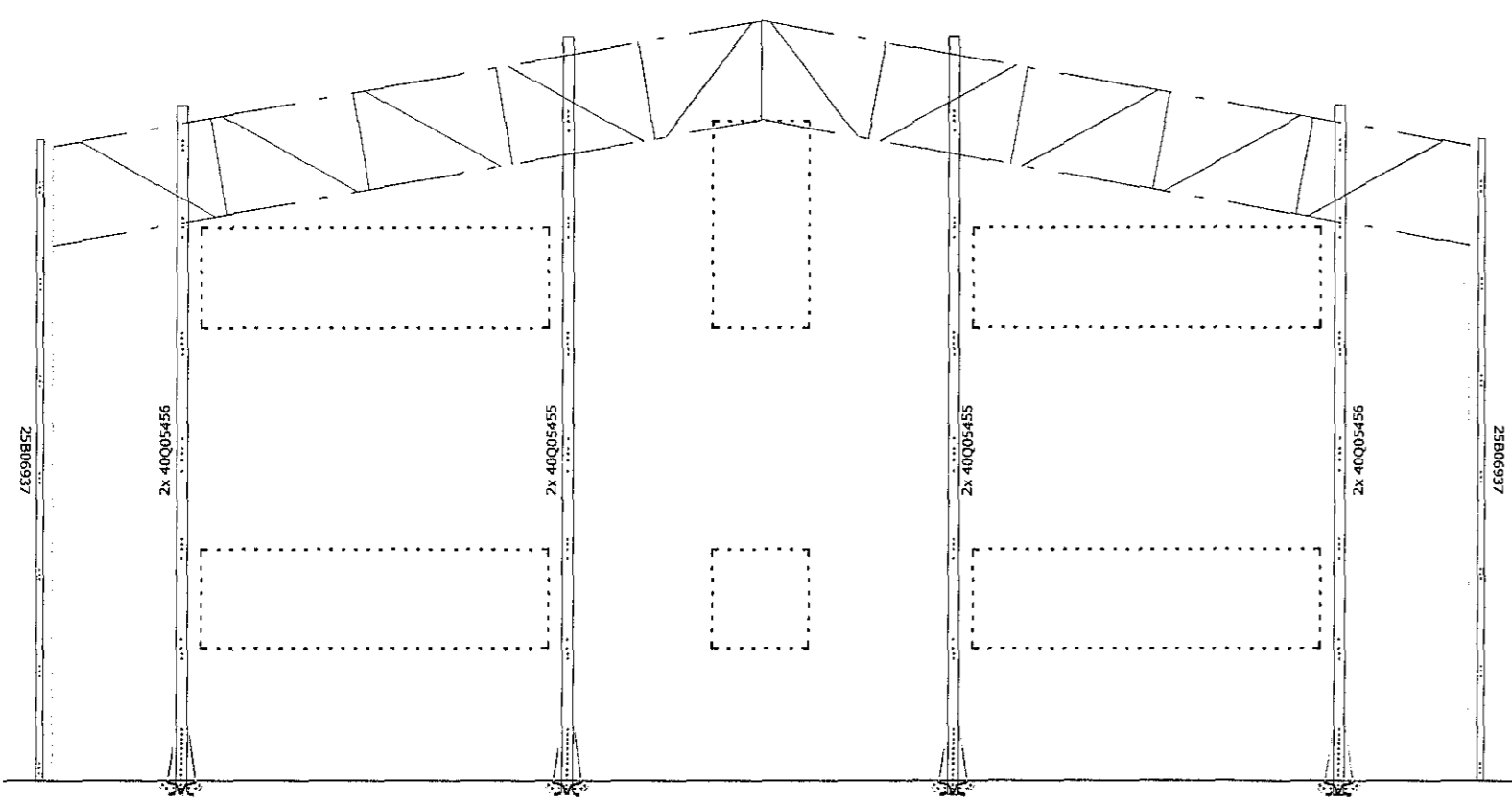


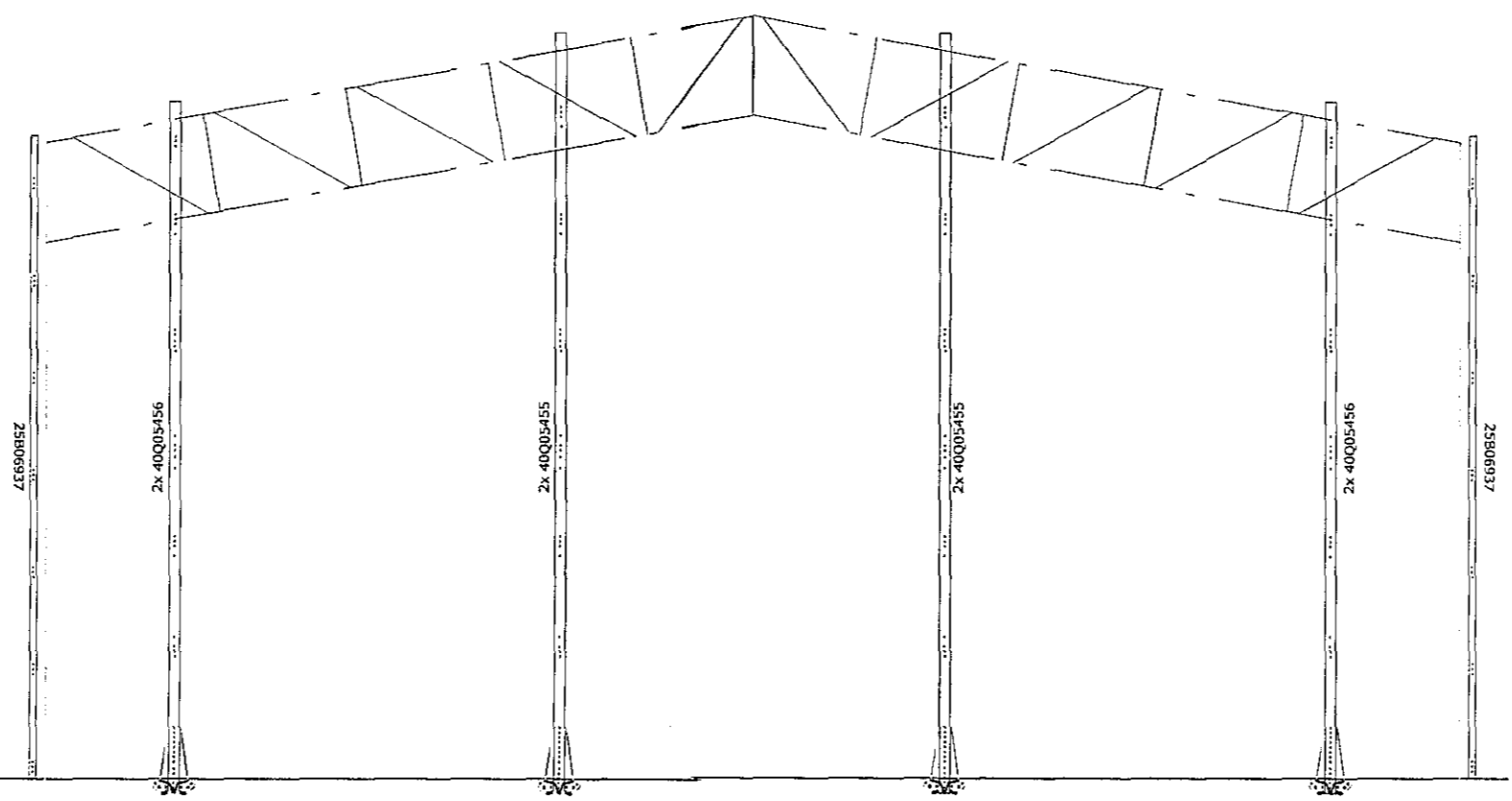
Burðarvirki bakhlíðar húss



Bakhlíð klæðningar húss



BURÐARSÚLUR Í GAFLA



BURÐARSÚLUR Í MILLIVEGGI

- SKÝRINGAR:**
- Undirstaða
 - Tvöfaldir Sigma-prófill (Ramm)
 - Sigma-prófill 320mm tvöfaldir (Gafsóla)
 - C-prófill 160x60 mm
 - C-prófill 130x60 mm
 - C-prófill 180x70 mm
 - Z-prófill 180x60 mm
 - Polysteini (RAL 7022)
 - Samlokupanill-120mm MW, lárétt (RAL 9006 PVDF)
 - Samlokupanill-120mm MW+
Kjötur 1000x32 mm (RAL 7022)
 - Reyklosunargluggar 1000x32 mm úr polycarbonate
 - Vindstífur
 - Þakniðarfallisenna Ø100 mm með yfirfellingu (RAL 3000)
 - Einangrabúr göngubúrur, BxH = ± 1000 x 2125 mm (RAL 7022)
 - Staksturshúrur, BxH = ± 3650 x 4600 mm (RAL 7022)
 - Gluggi, BxH = ± 2000 x 2120 mm (RAL 7022)
 - Gluggi, BxH = ± 4000 x 1020 mm (RAL 7022)
 - Gluggi, BxH = ± 3600 x 1020 mm (RAL 7022)
 - Gluggi, BxH = ± 1000 x 1020 mm (RAL 7022)
 - Gluggi, BxH = ± 1000 x 2120 mm (RAL 7022)
 - Gluggi, BxH = ± 54100 x 1020 mm (RAL 7022)

C:			
B:			
A:			
nr.	Dags.	Af.	Breyting
Frumstærð blaðs A1			
AL - HÖNNUN EHF			
<small>c/o Runólfur Þ. Sigurðsson Byggingateknif. B.Sc. Skólavegur 30, 300 Akranesi Kf: 090157-2489 S: 431-3441 ; 862-9933 ; Fax 431-3442 ; Netfang: runolfur@al-heimur.is</small>			
Verkefni:			
IDNADARHÚS, BURÐARÞÓL YFIRBYGGINGAR			
ÁLHELLA 7 HAFNAFYRDI			
Verkefni:			
YFIRLITSMYND BURÐARVIRKIS BAKHLÍÐAR			
Dags.	08.08.18	Nr.	16-152 213
Heimab.	R.P.S.	Telun.	R.P.S.
Samþ.	Runólfur Þ. Sigurðsson	Ad:	Mkv: 1:20
			Kf: 090157-2489