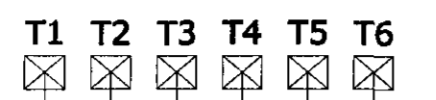
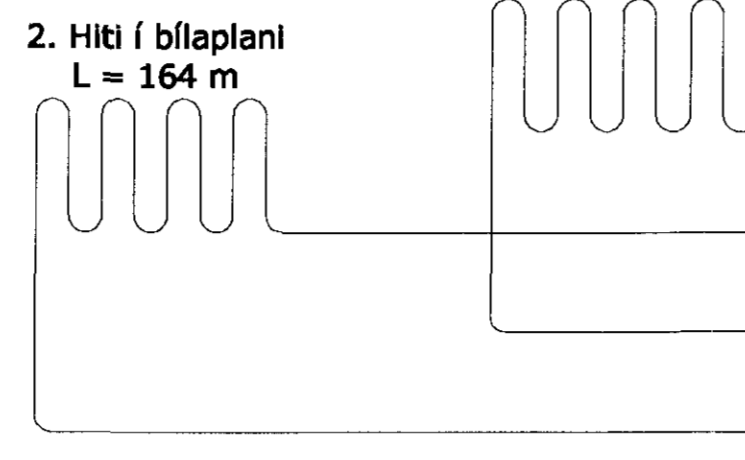


Slaufa nr.	Herbergi	Hitanemi nr.	Stíllitla
1	Bað	Ekki nemi	3
2	Herbergi	T 1	2
3	Herbergi	T 2	3
4	Herbergi	T 3	2
5	Gangur og TV	T 4	2
6	Eldhús	T 5	2
7	Borðstofa	T 5	3
8	Setustofa	T 5	2
9	Geymsla	Ekki nemi	3
10	Anddyri	Ekki nemi	2
11	Bílskúr	Ekki nemi	7
12	Bað	Ekki nemi	2
13	Herbergi	T 6	3

Hitanemar í herbergjum



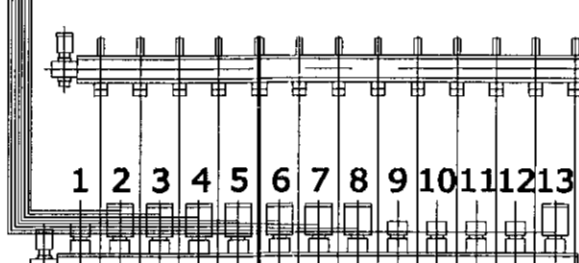
1. Hiti í bílplani
L = 183 m



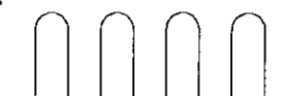
Rafmagnstafla

Tengibox

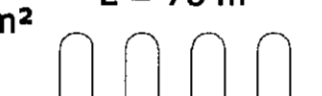
Danfoss tengikista 13 slaufur



1. Geymsla 7,1 m²
L = 58 m



2. Herbergi 8,1 m²
L = 78 m



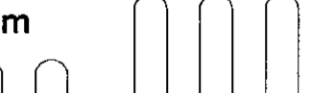
3. Herbergi 8,1 m²
L = 79 m



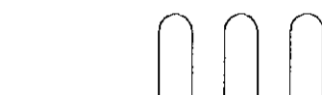
4. Herbergi 11,4 m²
L = 106 m



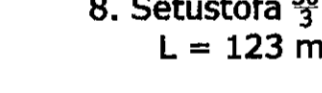
5. Gangur 16 m²
L = 46 m



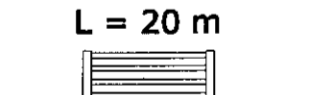
6. Eldhús 5,3 m²
L = 105 m



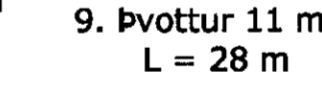
7. Borðstofa 5,3 m²
L = 111 m



8. Setustofa 5,3 m²
L = 123 m



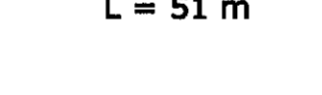
9. Þvottur 11 m²
L = 28 m



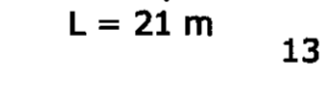
10. Anddyri 7,6 m²
L = 57 m



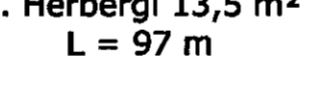
11. Bílskúr 23,2 m²
L = 51 m



12. Bað 3,5 m²
L = 21 m



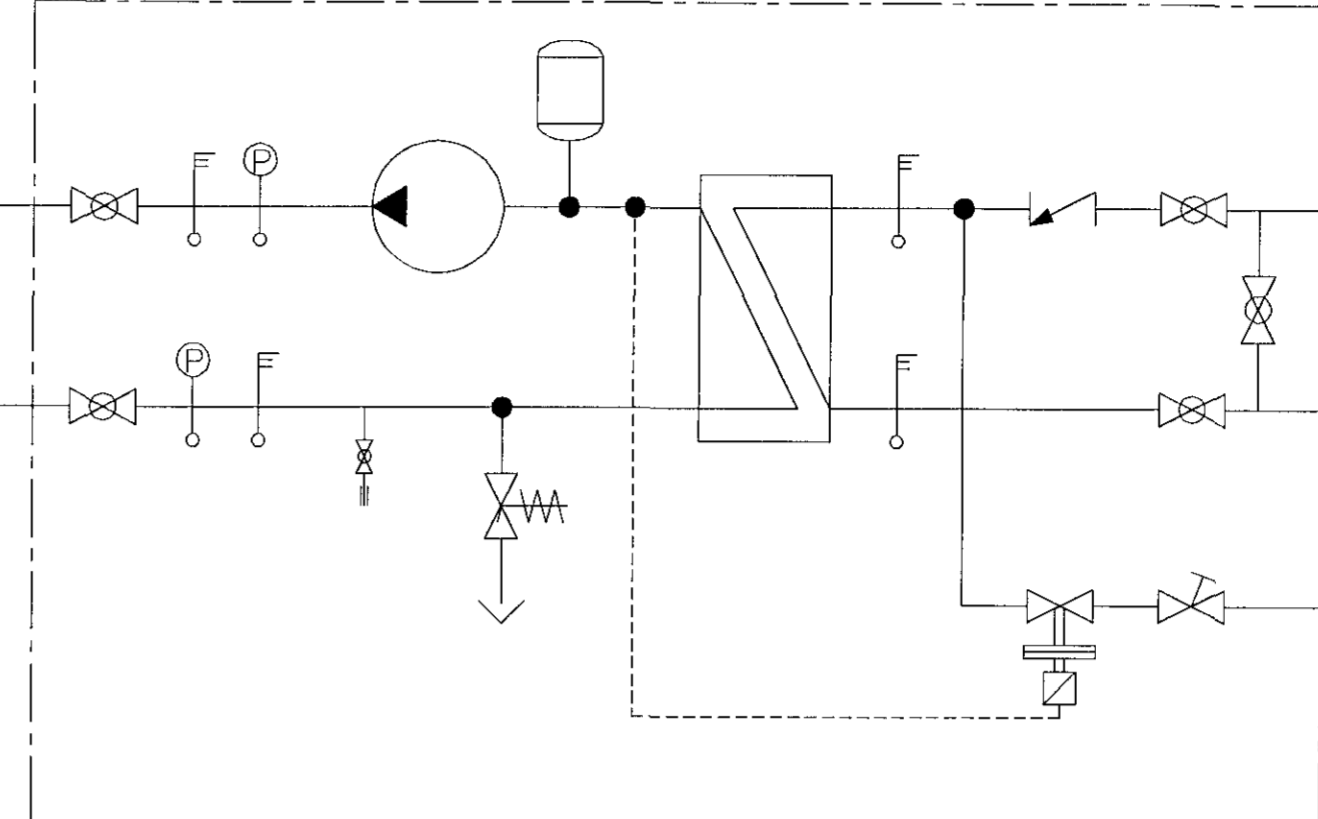
13. Herbergi 13,5 m²
L = 97 m



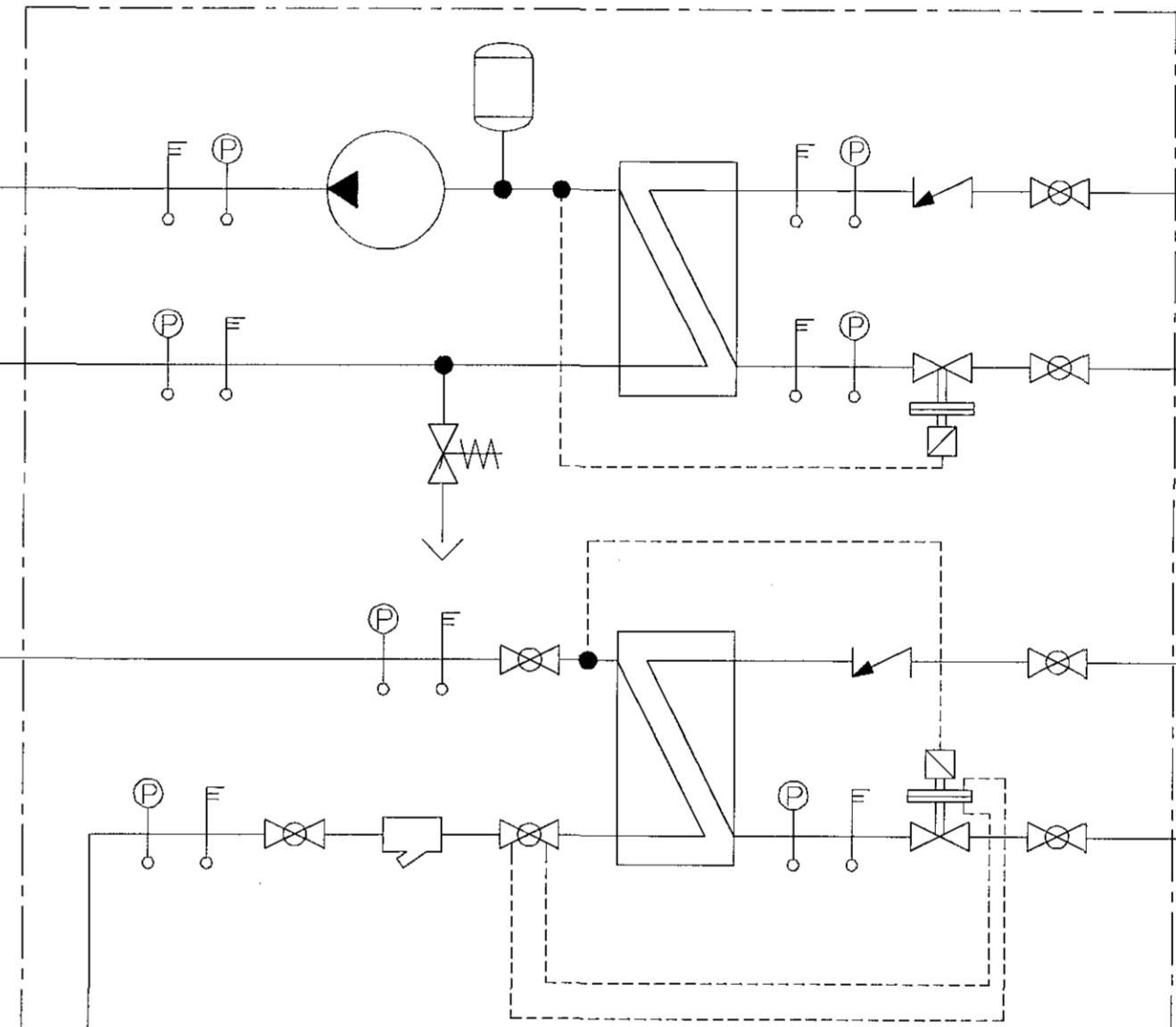
0. Handklæðaðfn
L = 20 m



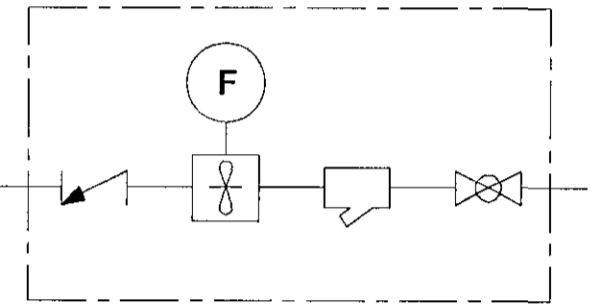
Danfoss snjóbræðslugrind VVX - T24



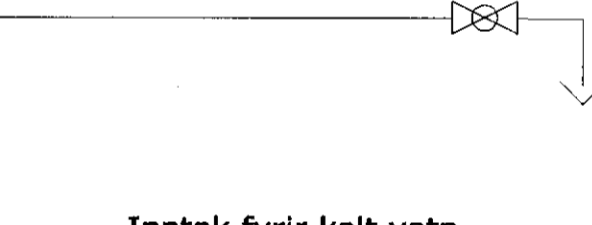
Danfoss tengigrind VVX 2 - 5



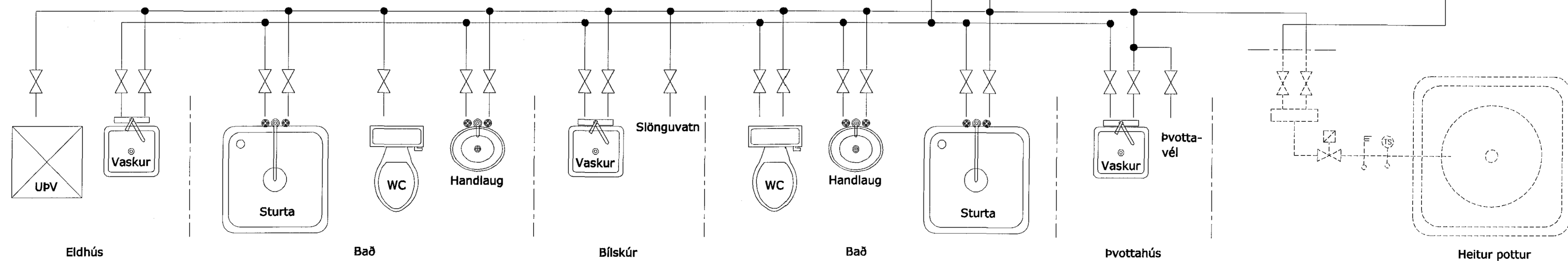
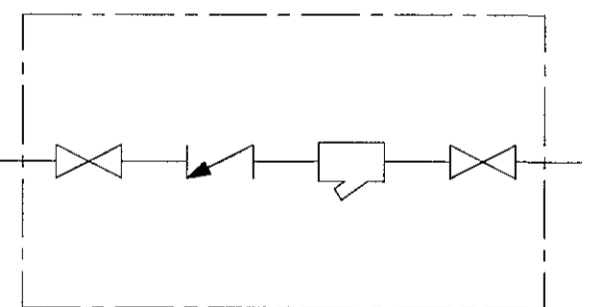
Inntak hitaveita



Hitaveita bakrás



Inntak fyrir kalt vatn



Grunnmynd

Sigríður Harðardóttir

Hannað	JG	Telknað	JG	Yfirfarib	EG
Nafn hönnuðar	Guðrúnður Ósvaldsson				
Kennitala	061254-3239	Dags	10.9.2018		
Undirskrift	<i>Guðrúnður Ósvaldsson</i>				
Kvistavellir 72					
Kerfismynd lagdir					
Verknr.	K66-72	Telkning nr.	Útg.		
Frumst. bl.	A1	125L - C			
Mælikvarði:	1:40				