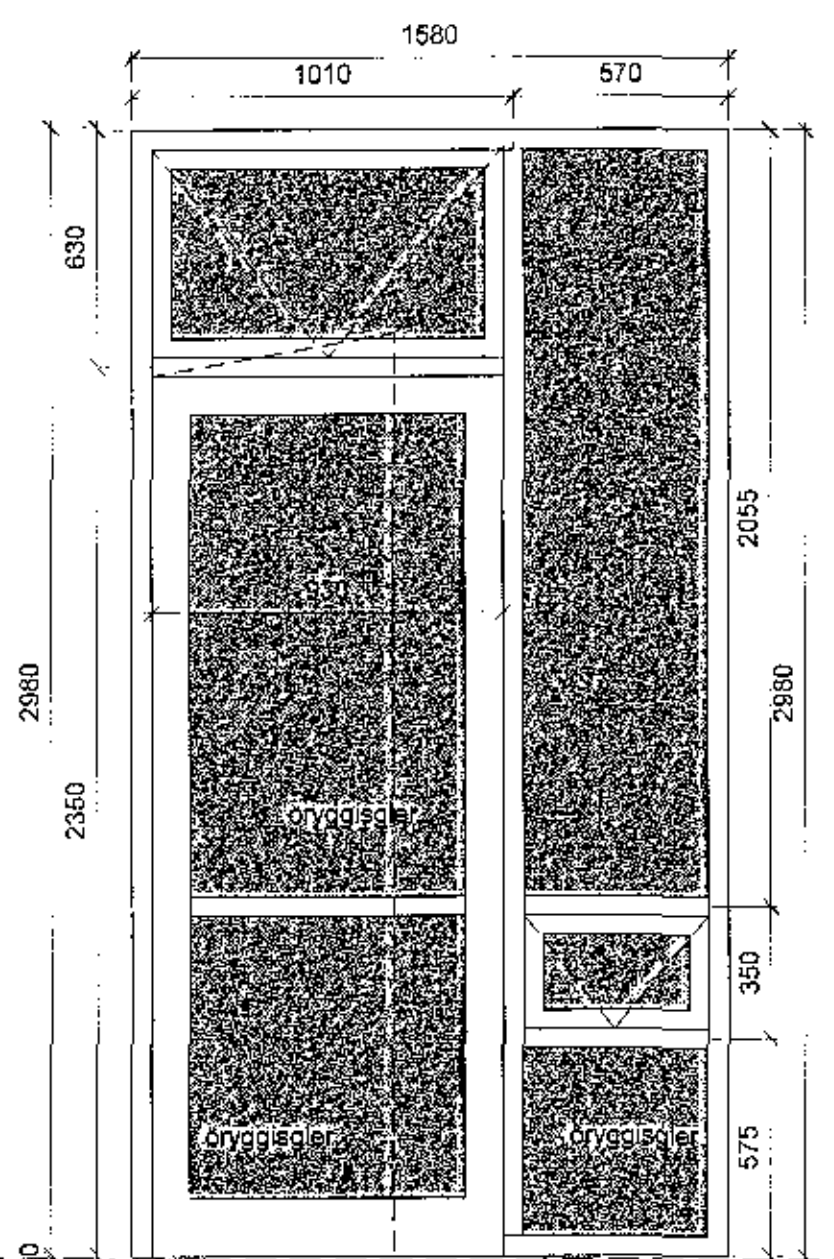
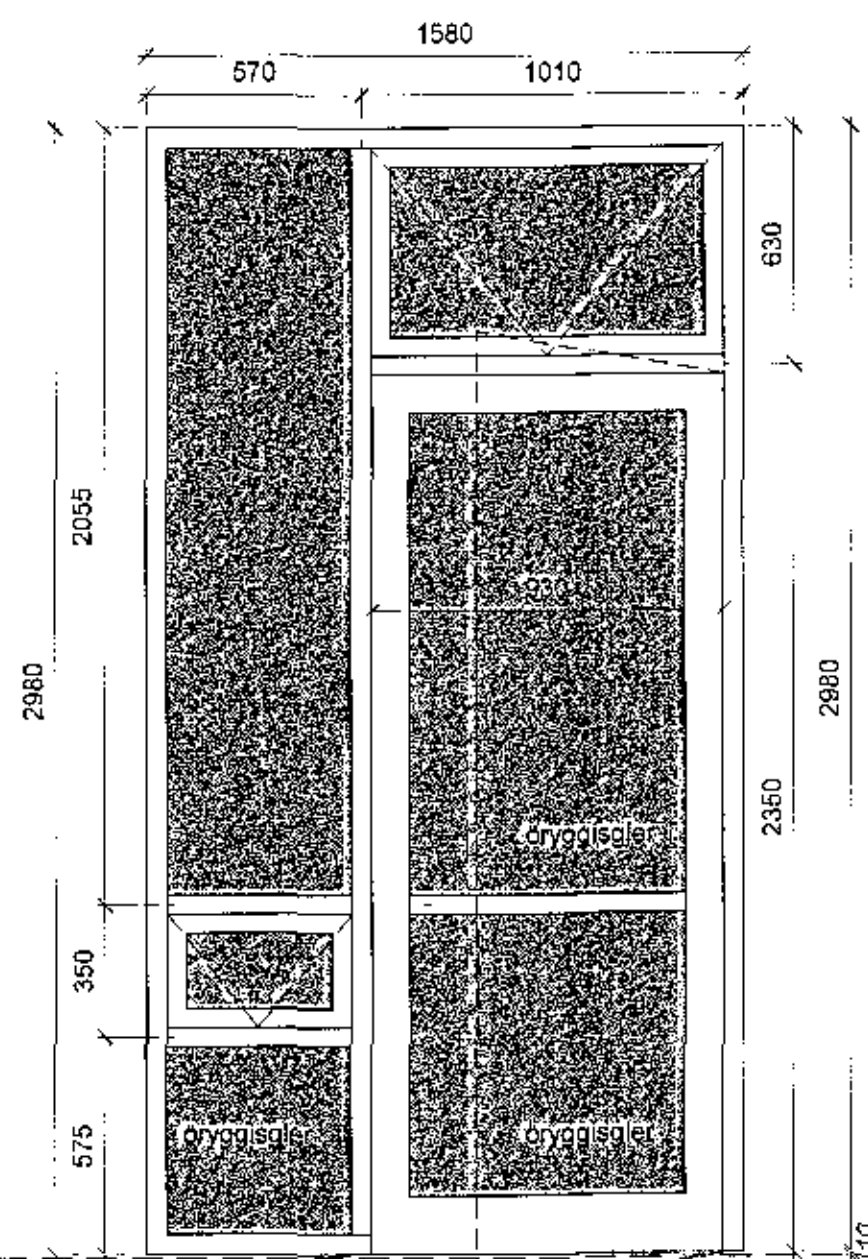


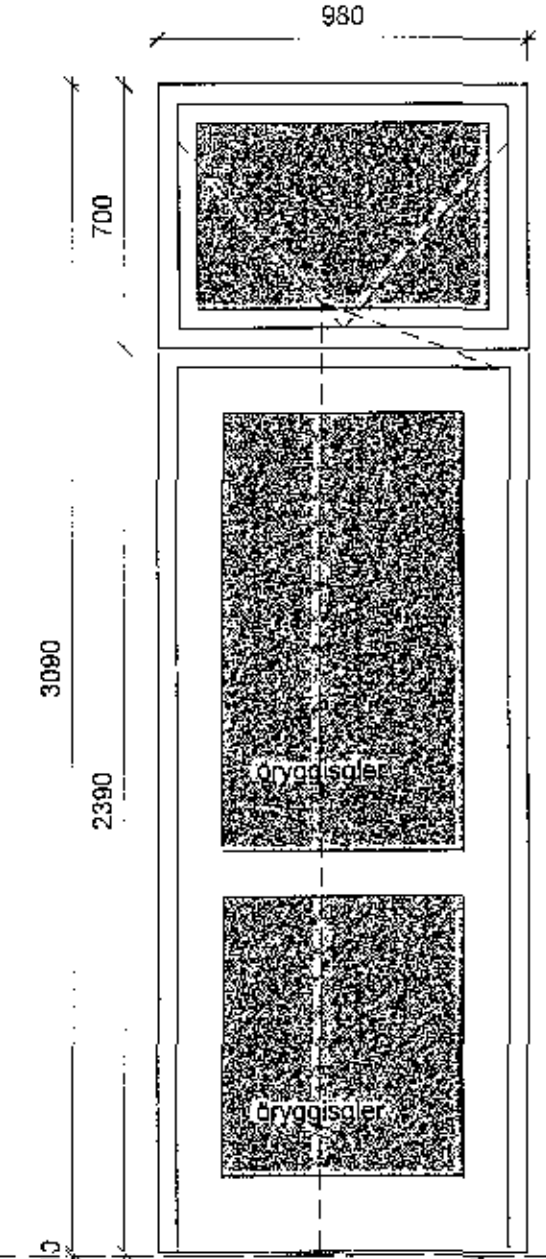
Samþykkt þann
 04 DEC 2018
 Rýðgingarfulltrúi / Hæðertíri
 f. h. Sigurður Steinar Jónsson



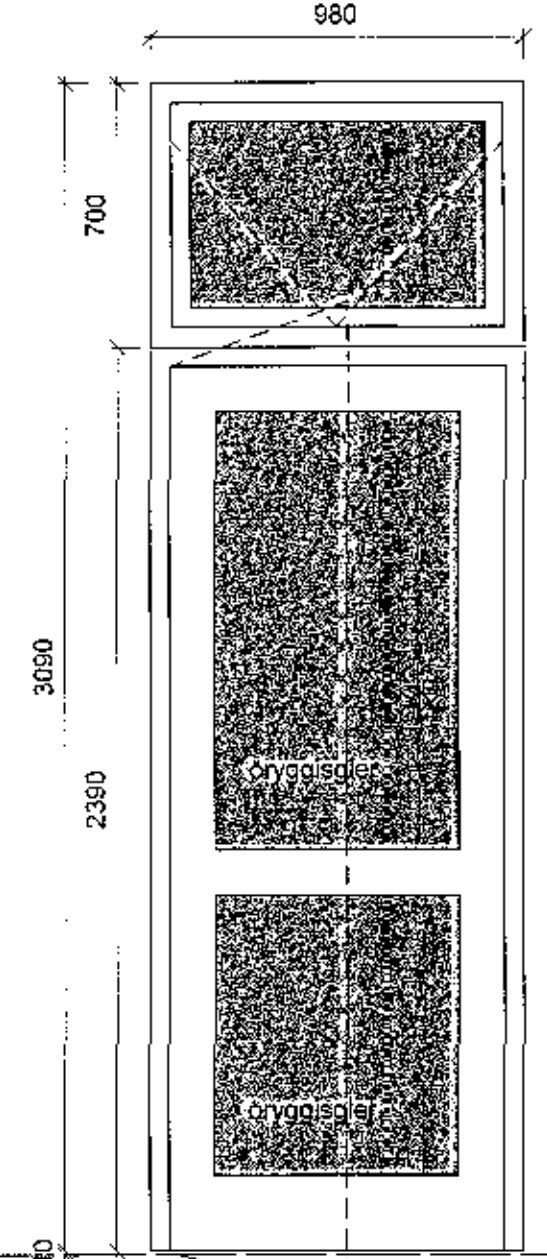
ÚG-A
5 stk.



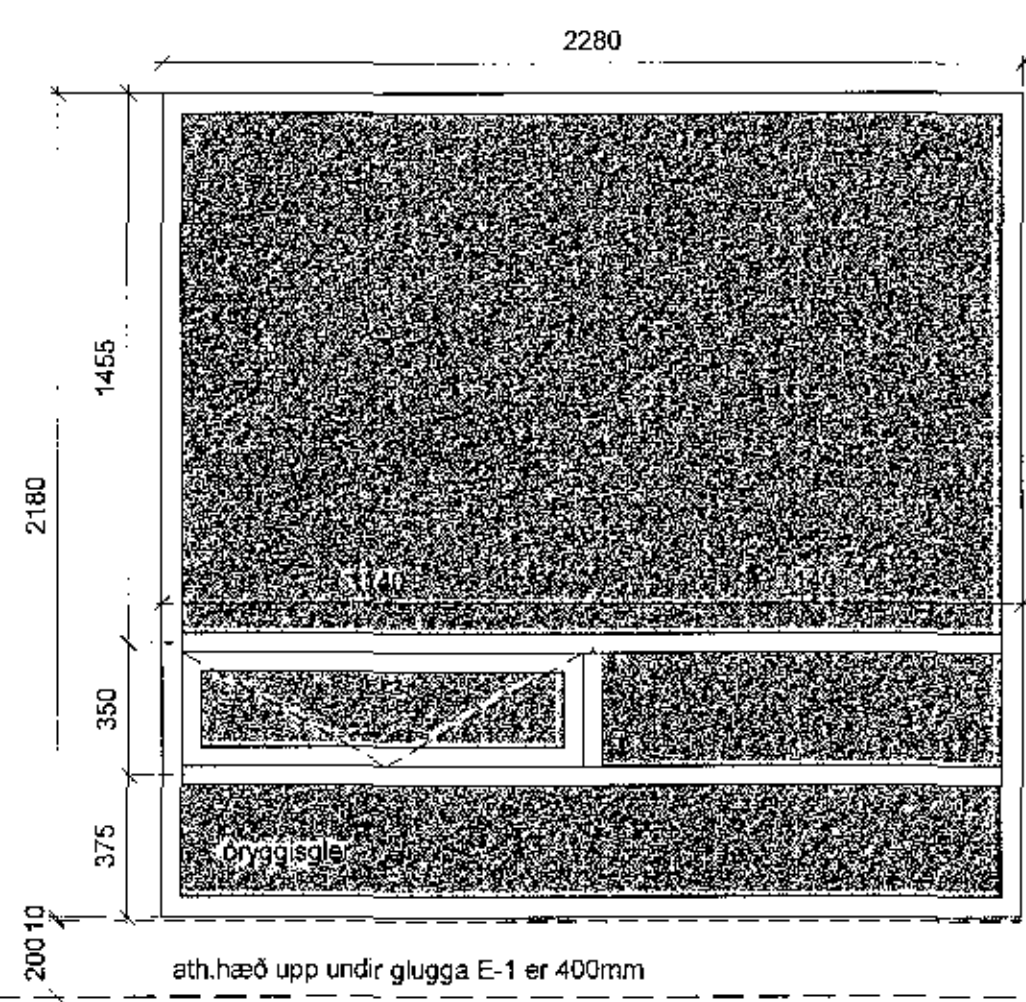
ÚG-B
1 stk.



ÚH-C
5 stk.
ATH: þar af 1 stk.
E30C hurð/gluggi

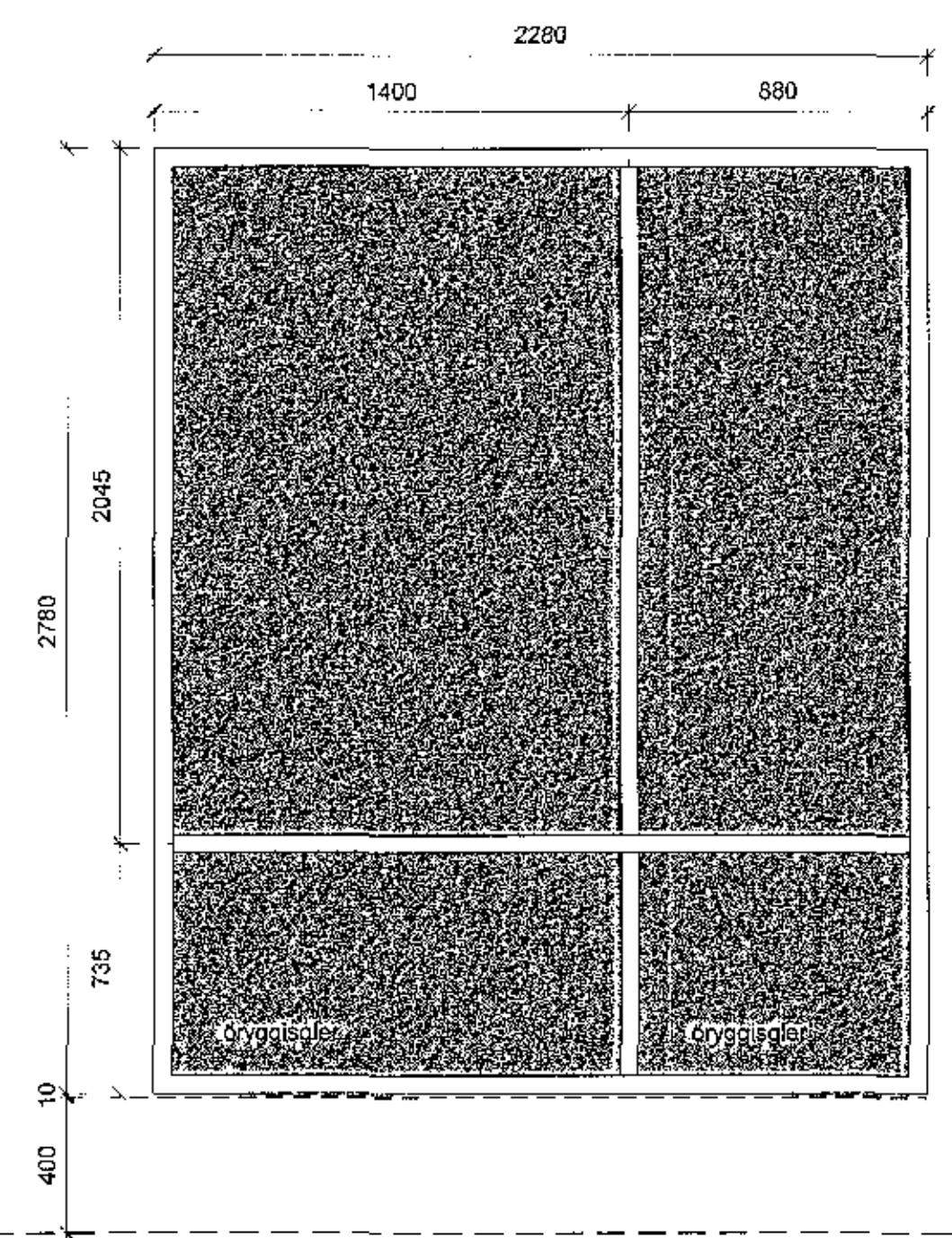


ÚH-D
2 stk.
ATH: þar af 1 stk.
E30C hurð/gluggi

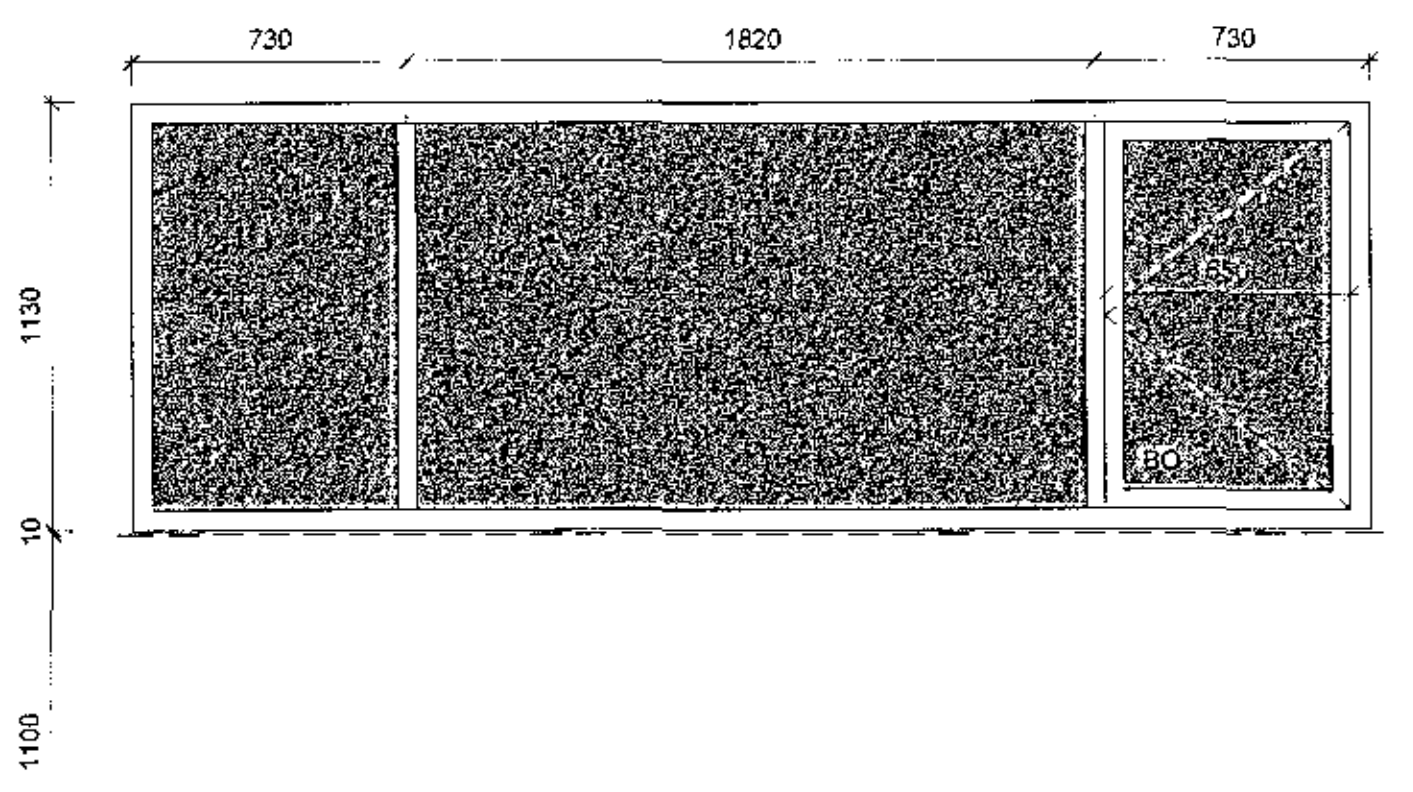


ÚG-E
5 stk.

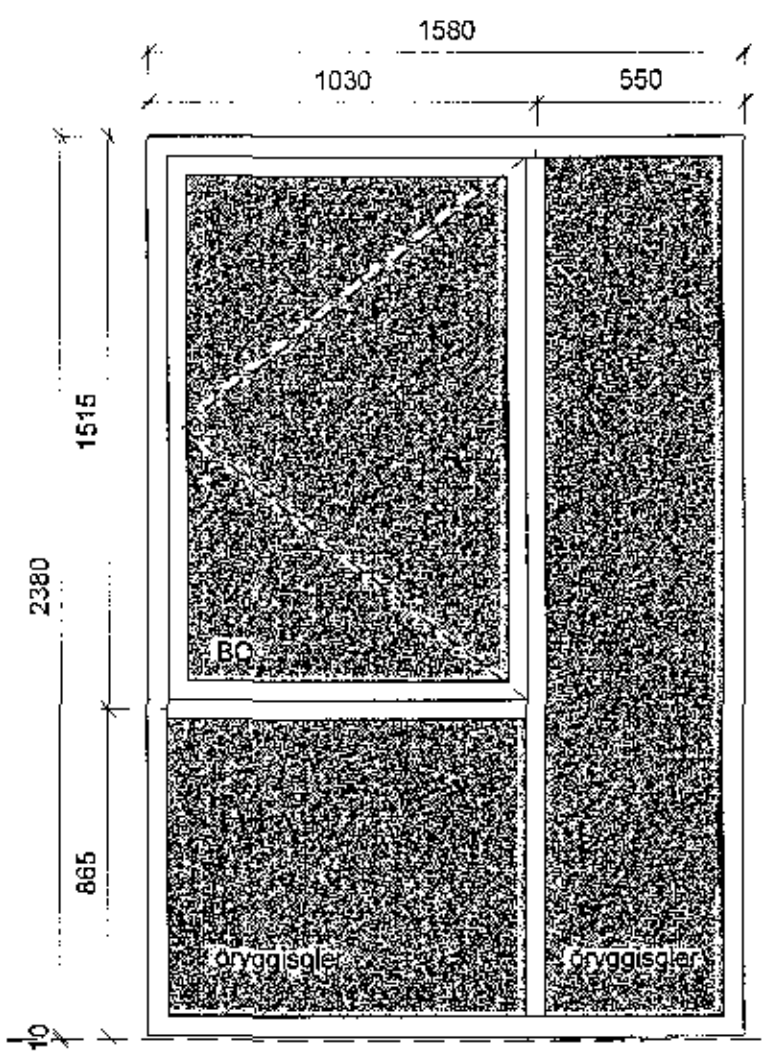
ath. hæð upp undir glugga E-1 er 400mm



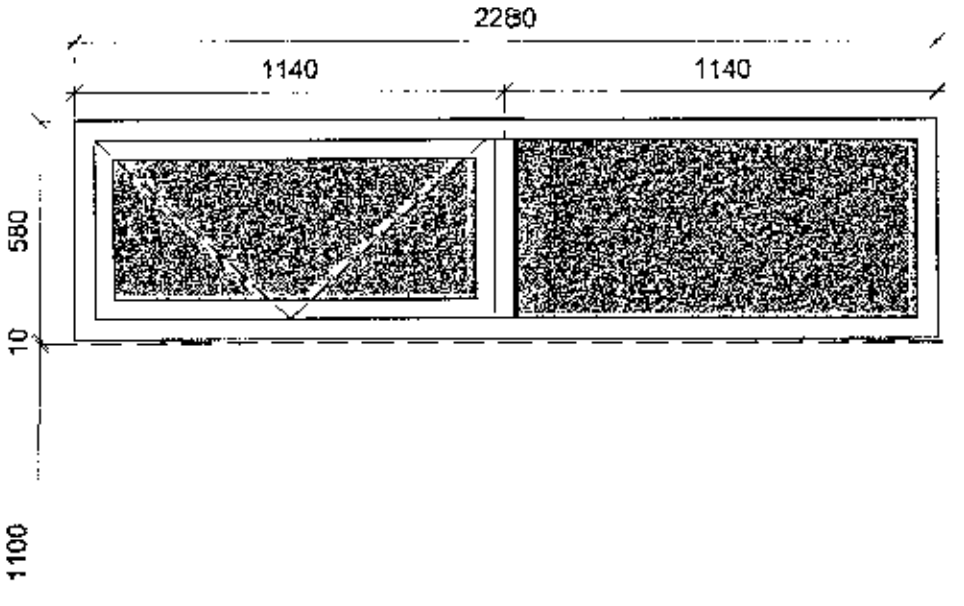
ÚG-F
1 stk.



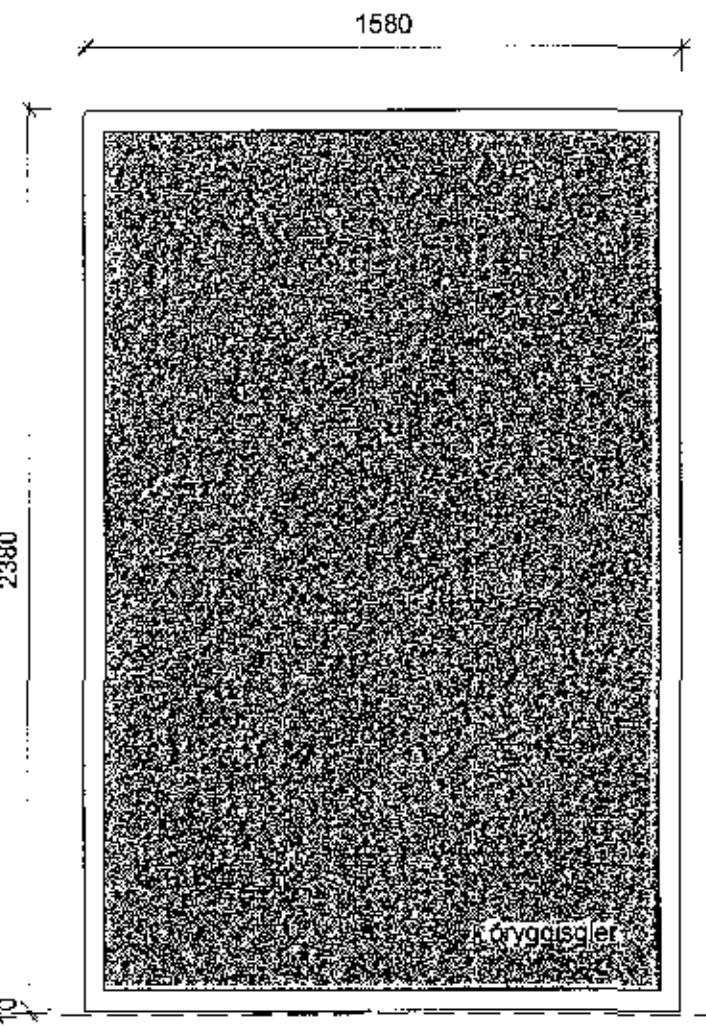
ÚG-G
13 stk.



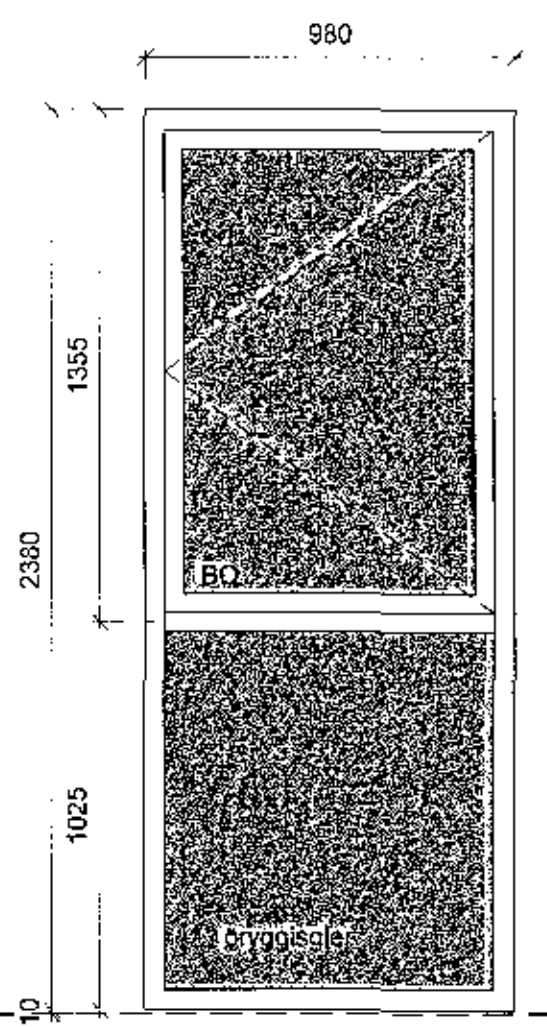
ÚG-H
4 stk.



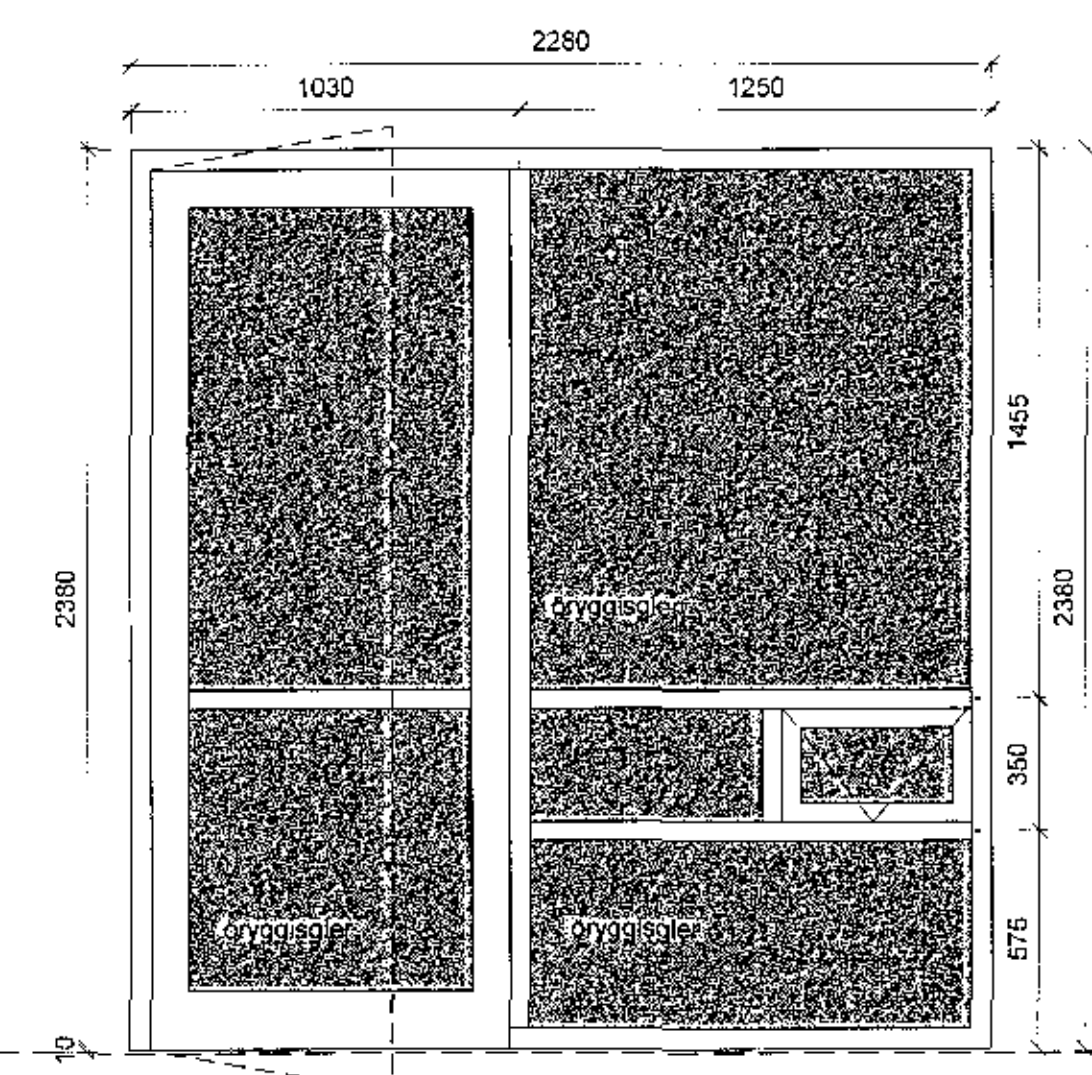
ÚG-I
2 stk.



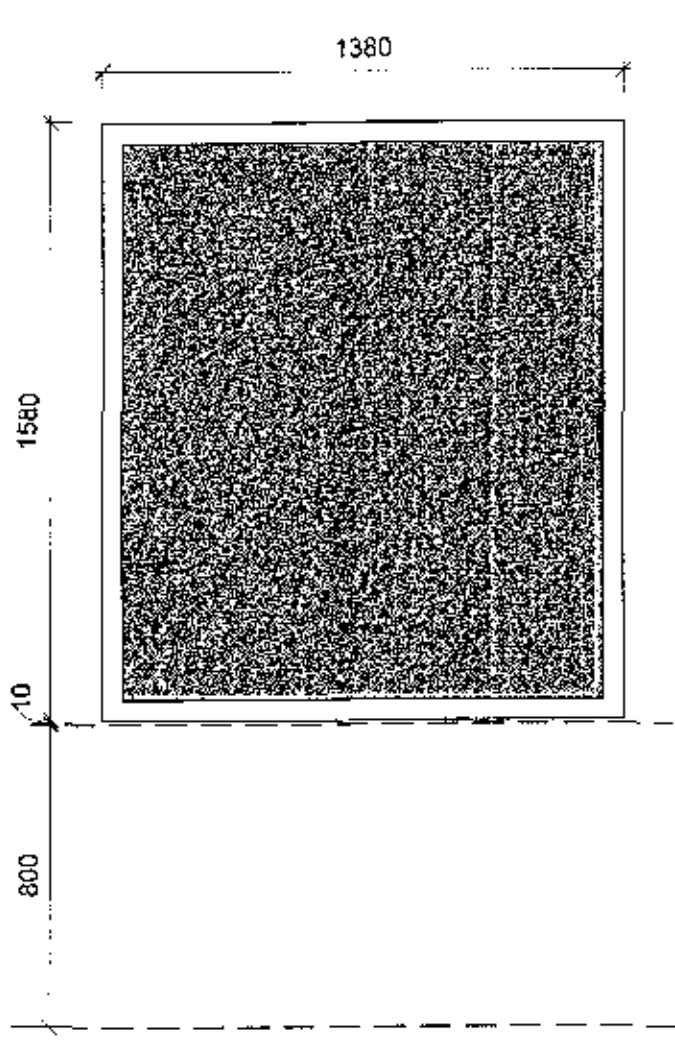
ÚG-J
2 stk.



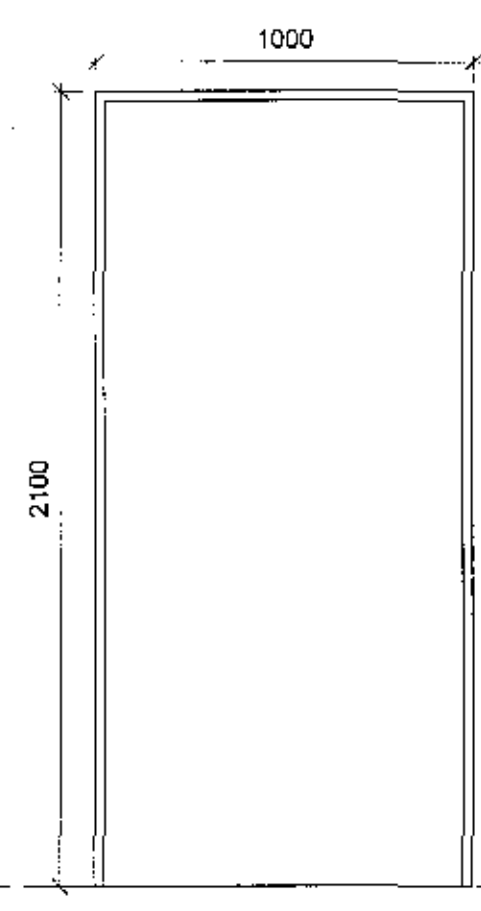
K
2 stk.



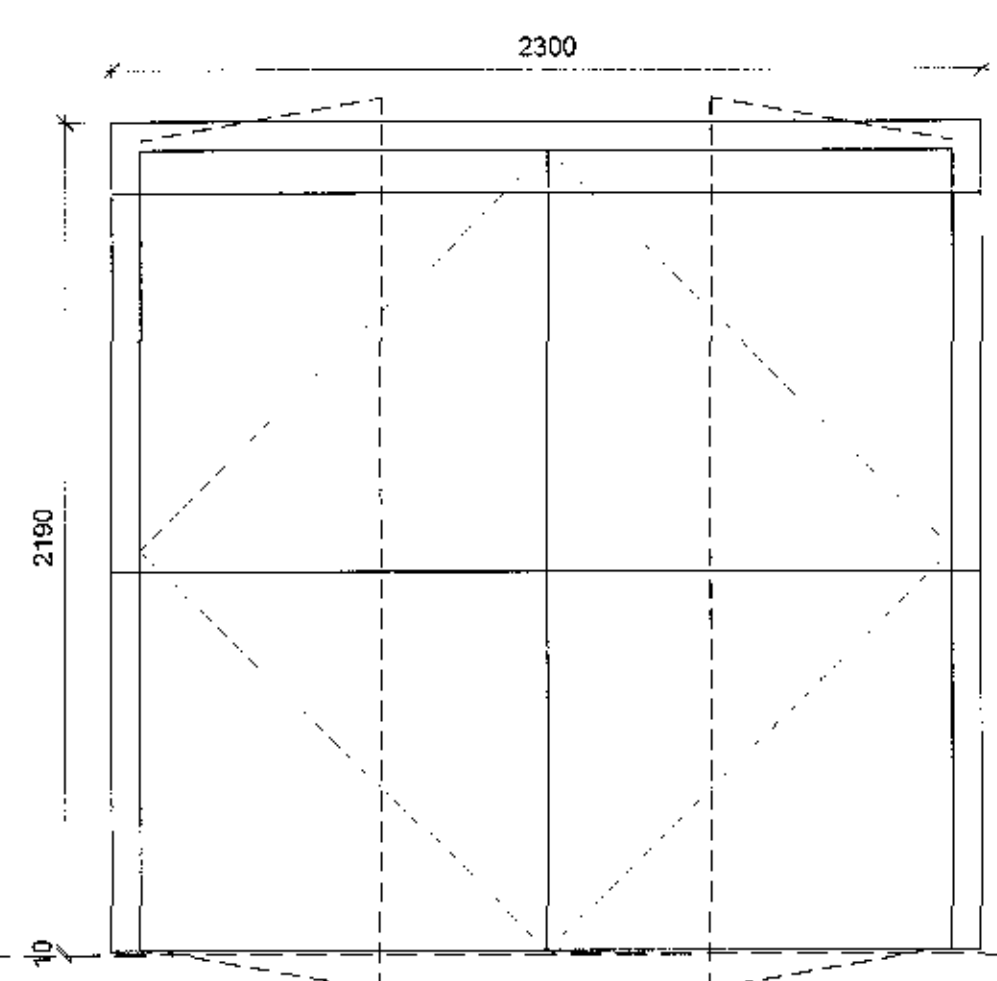
ÚG-L
2 stk.



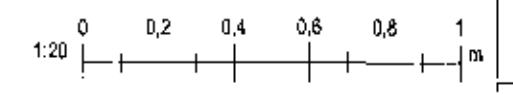
ÚG-M
1 stk.



ÚH-R
1 stk.



ÚH-S
1 stk.



Gert er róa fyrir 10mm fúu í kringum alla glugga og hurðir Litur á kórnum skal vera dökkgrár - RAL litur ákvarðast síðar.
 Allar gólfíðar rúður skulu vera úr oryggisgli.
 Merkt björgunartop skulu ná þeirri lágmarksstærð sem teikningar sýna.

B	11.9.2018	Málum á hurðum C, D og R breytt	SO
A	13.8.2018	Flekkari upplýsingar settar inn	SO
Útg.	Dagur	Skyring	Bréf

Gríma arkitektar
 Laugavegi 178 - 105 Reykjavík
 Sí: 511-6777 / 697-3760
 www.grimaark.is

Undirskrift hönnuðar: *Sigríður Ólafsdóttir*
 Aðalhönnuðar: Sigríður Ólafsdóttir arkitekt FAI - kt. 071070-5069
 netfang: sigga@grimaark.is

Hefðlöfing: **ALFHELLA 4**
 Sveitafélag:

Verktagunur:

Landnúmer:	Stofnúmer:
yfiritteikning	
Gluggayfirit	
Hannað af: SO	Málhöfundur:
Teknað af: SO	Málkvarði: 1:20
Yfirlit af: SO	Dagsetning: 16.5.2018

2017-09-13 **A_4_Á_01** **B**
 Verknúmer: Teikningarúmer: Bls. Útgáf:

Útgáfa: 11.9.2018 10:05:57
 Úppanir: 03/03/18
 Skrá: C:\Users\sigridu\Box Sync\2017-09-13 skemma fyrir B og K11 fkor11 MASTERBK_skemma 10.rvt