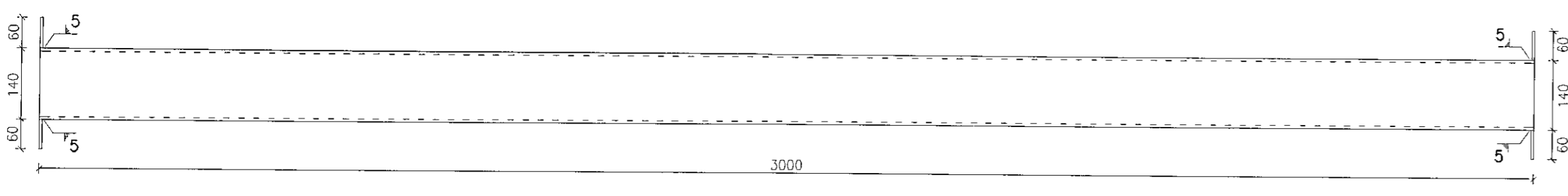
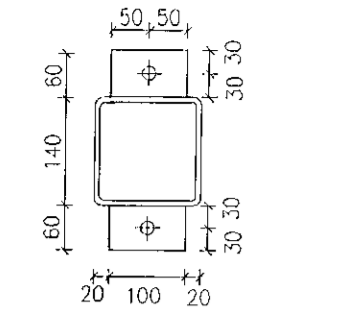


SP84.1 1:10 2 pcs

S235 2 pcs STEEL PLATES 100x60x5 mm
WELDED TO STEEL COLUMN a=5 mm
HOLE 1 psc D=18 mm IN EACH PLATE

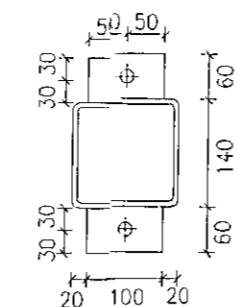


S235 STEEL PROFILE
140x140x5.0 mm

SP84 1:10 1 pcs

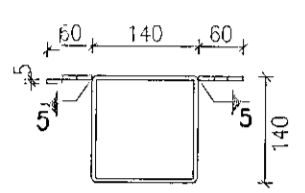
SP84.2 1:10 2 pcs

S235 2 pcs STEEL PLATES 100x60x5 mm
WELDED TO STEEL COLUMN a=5 mm
HOLE 1 psc D=18 mm IN EACH PLATE



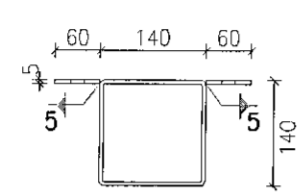
SP70.1 1:10 38 pcs

S235 2 pcs STEEL PLATES 100x60x5 mm
WELDED TO STEEL COLUMN a=5 mm
HOLE 1 psc D=18 mm IN EACH PLATE



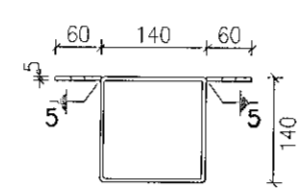
SP82.1 1:10 2 pcs

S235 2 pcs STEEL PLATES 100x60x5 mm
WELDED TO STEEL COLUMN a=5 mm
HOLE 1 psc D=18 mm IN EACH PLATE



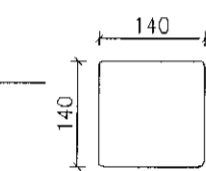
SP83.1 1:10 2 pcs

S235 2 pcs STEEL PLATES 100x60x5 mm
WELDED TO STEEL COLUMN a=5 mm
HOLE 1 psc D=18 mm IN EACH PLATE



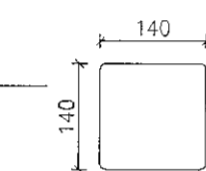
SP70.2 1:10 19 pcs

S235 STEEL PLATES 140x140x5 mm
WELDED TO TOP OF STEEL COLUMN a=5 mm



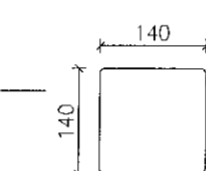
SP82.2 1:10 1 pcs

S235 STEEL PLATES 140x140x5 mm
WELDED TO TOP OF STEEL COLUMN a=5 mm



SP83.2 1:10 1 pcs

S235 STEEL PLATES 140x140x5 mm
WELDED TO TOP OF STEEL COLUMN a=5 mm



SP70 TO SP81
SEE LENGTH IN TABLE
TOTAL 19 pcs

STEEL COLUMNS IN WALL
RHS 140x140x5 mm

length	mm	pcs
SP70	9550	1
SP71	10050	1
SP72	10450	1
SP73	10800	1
SP74	11200	1
SP75	11500	2
SP76	11750	2
SP77	11950	2
SP78	12100	2
SP79	12250	2
SP80	12350	2
SP81	12400	2

SP82 1:10 1 pcs

S235 BOTTOM STEEL PLATE 200x140x10 mm
WELDED TO STEEL COLUMN a=5 mm
HOLES 2 psc D=18 mm

SP82.3 1:10 1 pcs

S235 BOTTOM STEEL PLATE 200x140x10 mm
WELDED TO STEEL COLUMN a=5 mm
HOLES 2 psc D=18 mm

SP83.3 1:10 1 pcs

Forubúðir 5 steel parts interwall

Klöpp/SE 140519

Name	type	steel grade	size mm	length mm	pieces	weight kg	drawing	comments
SP70	rectangular pipe	S235	140x140x5.0	9550	1	200,55	B 602	
SP71	rectangular pipe	S235	140x140x5.0	10050	1	211,05		
SP72	rectangular pipe	S235	140x140x5.0	10450	1	219,45		
SP73	rectangular pipe	S235	140x140x5.0	10800	1	226,80		
SP74	rectangular pipe	S235	140x140x5.0	11200	1	235,20		
SP75	rectangular pipe	S235	140x140x5.0	11500	2	483,00		
SP76	rectangular pipe	S235	140x140x5.0	11750	2	493,50		
SP77	rectangular pipe	S235	140x140x5.0	11950	2	501,90		
SP78	rectangular pipe	S235	140x140x5.0	12100	2	508,20		
SP79	rectangular pipe	S235	140x140x5.0	12250	2	514,50		
SP80	rectangular pipe	S235	140x140x5.0	12350	2	518,70		
SP81	rectangular pipe	S235	140x140x5.0	12400	2	520,80		
SP70.1	steel plate	S235	60x100x5		38	8,95		
SP70.2	steel plate	S235	140x140x5		19	14,62		
SP70.3	steel plate	S235	140x260x10		19	54,29		
SP82	rectangular pipe	S235	140x140x5.0	11350	1	238,35		
SP82.1	steel plate	S235	60x100x5		2	0,47		
SP82.2	steel plate	S235	140x140x5		1	0,77		
SP82.3	steel plate	S235	140x200x10		1	2,20		
SP83	rectangular pipe	S235	140x140x5.0	10950	1	229,95		
SP83.1	steel plate	S235	60x100x5		2	0,47		
SP83.2	steel plate	S235	140x140x5		1	0,77		
SP83.3	steel plate	S235	140x200x10		1	2,20		
SP84	rectangular pipe	S235	140x140x5.0	3000	1	63,00		
SP84.1	steel plate	S235	60x100x5		2	0,47		
SP84.2	steel plate	S235	60x100x5		2	0,47		
total weight						5250,6		

Samþykkt þann

30 SEP 2019

Byggingarfulltrúnaður í Hafnarfjarðum
F.h. Sigurður Steinar Jónsson

NR. DAGS. BREYTING
A 270619 ADDED DETAILS AND MEASUREMENTS

SKÝRINGAR

b
BATTERIÐ
ARKITEKTAR
ADALHÖRNUMÍÐUR :
JÓN ÓLAFUR GLÁSSON 090658-4099
SIGURDUR EINARSSON 110457-2789
SIGURDUR HARDARSON 030446-3999

19/09/19
SEMUNDUR EIRIKSSON 281249-2949

FORNUBÚÐIR
EIGNARHALDSFÉLAG EHF
FORNUBÚÐIR 5
220 HAFNARFJÖRÐUR



KLÖPP ARKITEKTAR-VERKFRÉÐINGAR EHF
NETHYL 2E, 110 REYKJAVÍK
SÍMI 577 2277, 699 7747 - klopp@sinnet.is

HEITI TEIKN. BURDARÞÓL MILLIVEGGUR
STÁLHLUTAR
MÁLKVARDI 1:10 DAGS. MAÍ 2019

TEIKNING B 602 VERK V 17-601
BREYTING A YFIRFARID S.E.