

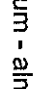
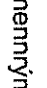
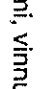
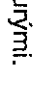

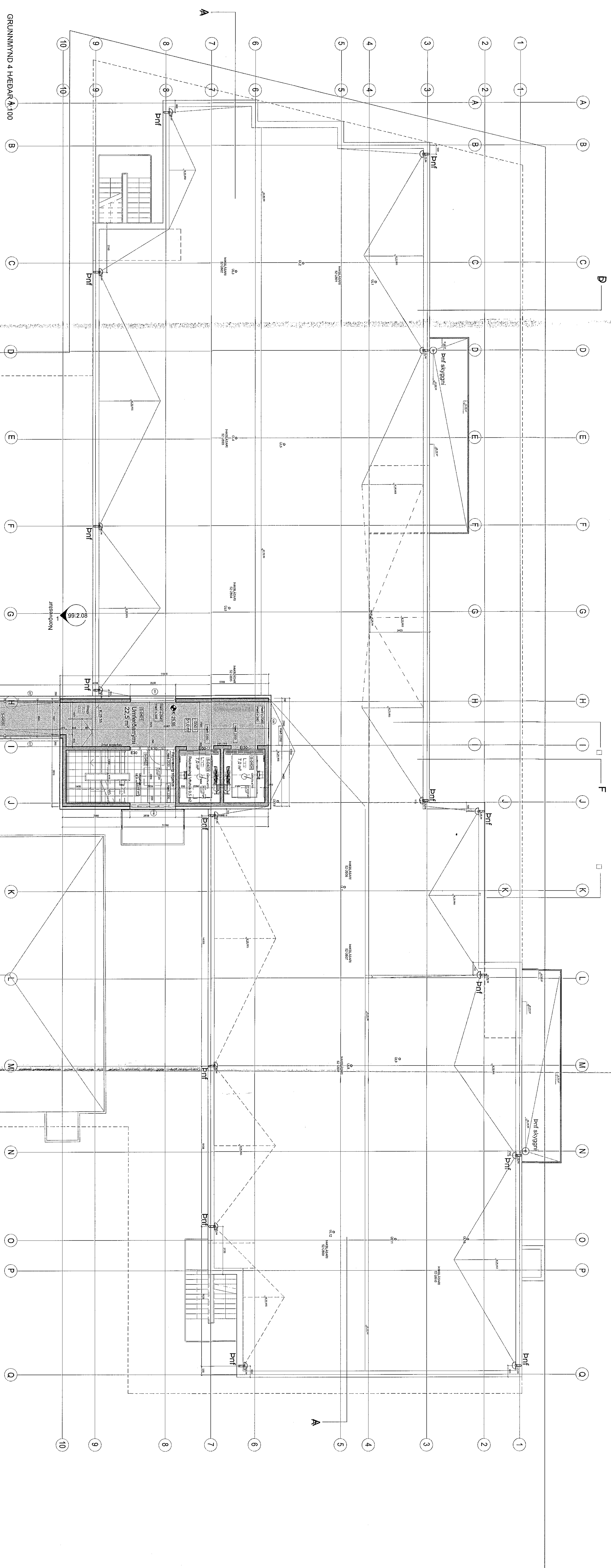


Samþykkt þann
02 SEP 2019
Byggingarritun / Kéfnaför
F. A. Sigurður Stólar Jónsson

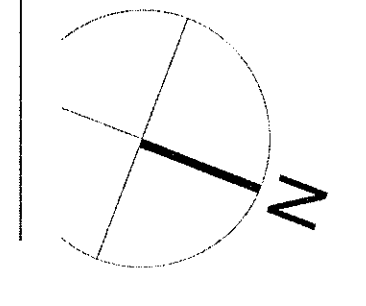
ARTINN HÖNNUNARSTJÓLA
UTÍ
ARKITEKTAR
BALDUR G. SVAVASSON
KETTUNARSTR. 31A
101 REYKJAVÍK

-  Línuleum - almennmynt, vínyrmynt.
-  Línuleum - einstaklingsmynt
-  PVC gólfplakur - vöryrnt
-  PVC veigplakur - vöryrnt
-  Frísaleiga gólf
-  Málud gólf
-  Þryggingólf



Gólfefnafrétt

Línuleum rými/vínuleym	Línuleum einastaklings- vöryrnt	PVC gólfplakur, veigplakur, stíga	PVC gólfplakur, anddyrum, Málud gólf
351	60	480	32
464	130	480	23
464	130	480	23
464	130	480	23
51	130	480	23
1794	1380	1440	124
			138



3 69.211

2 69.268

VERTEIKNINGAR

SÖLVANGUR SÖLVANGSVEGI 2 HAFNARVÖRÐI

VERK 1533 Gullmúur
NÚMÉR 1.100
DAGS 28.02.2018
TEKNI JBP
SPEK 3333 Gullmúur lag

GOLFFERNA YFIRLIT
GRUNNMÝND 4 HÆÐ

UTÍ
ARKITEKTAR

BRUNOHLÓSTRÆTI 27 101 REYKJAVÍK
Sími 562 7800 5.62.7800 FAX 562 7801
NETVAÐ VEFVAÐ
BALDUR G. SVAVASSON ARKITEKTAR FKA
100075-010
JÓN ÞÓR ÞORVALDSSON ARKITEKTAR FKA
027056-579

A-431