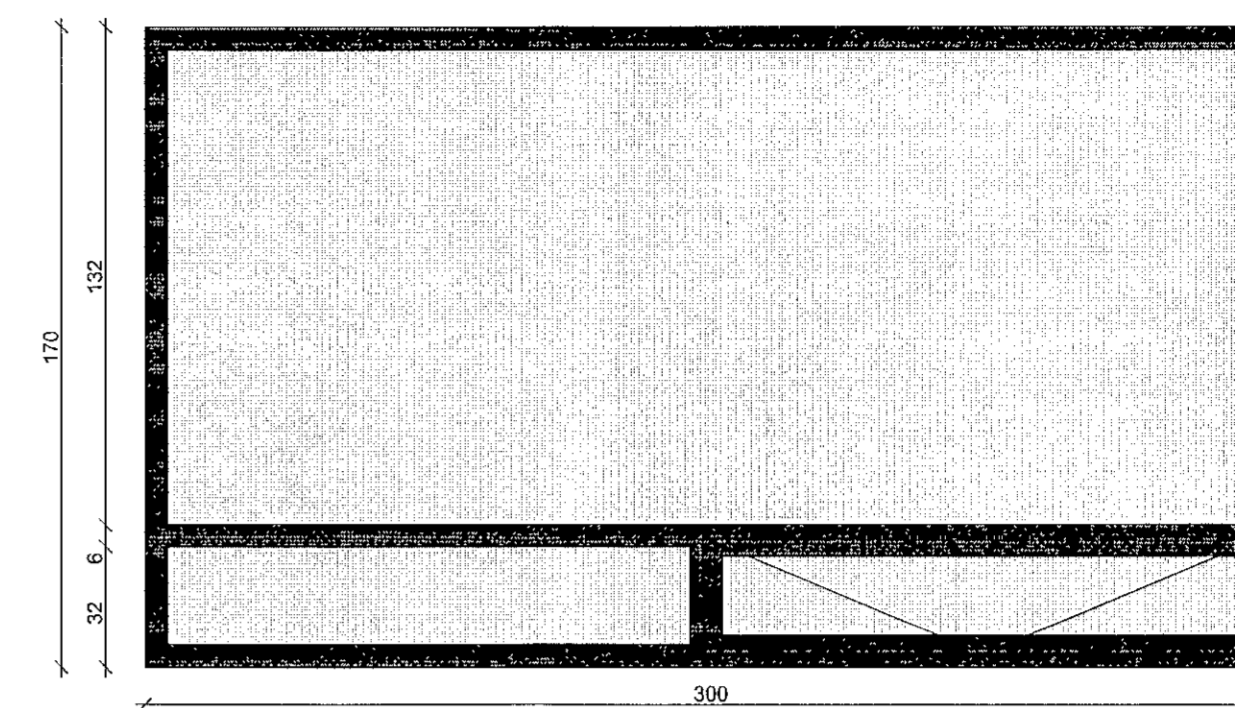
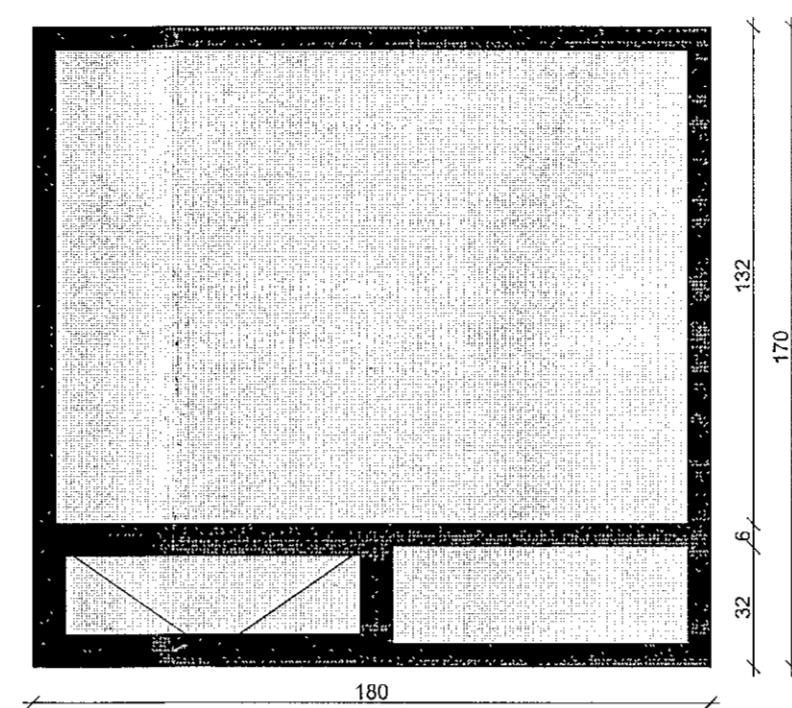
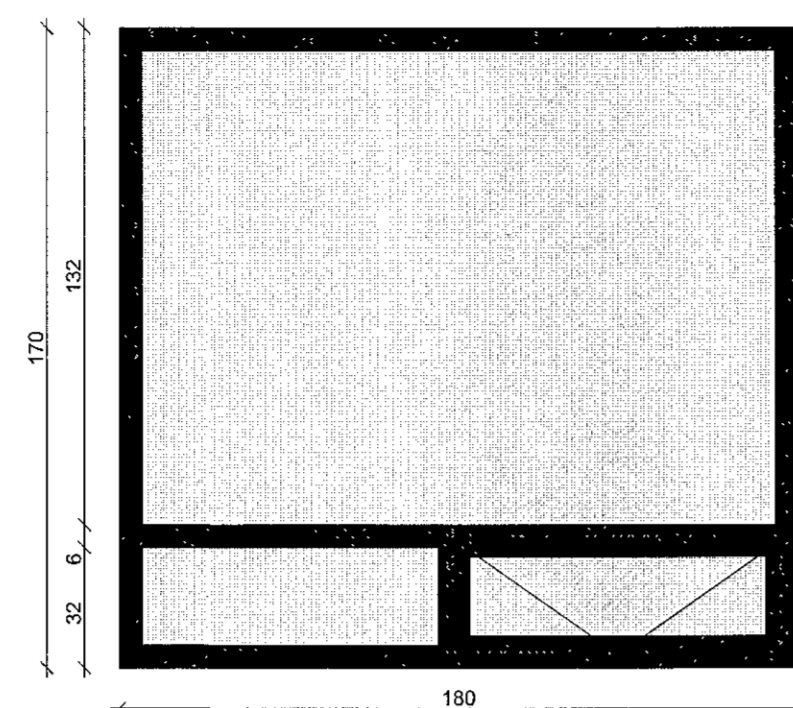
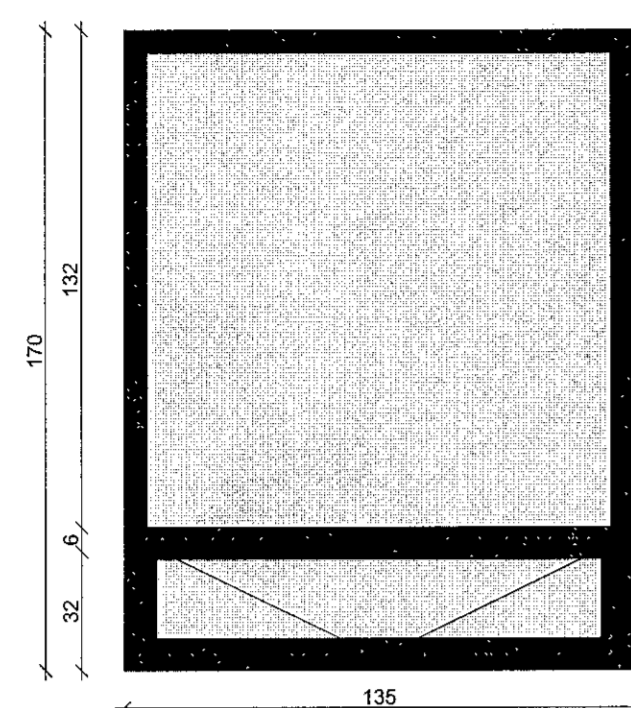
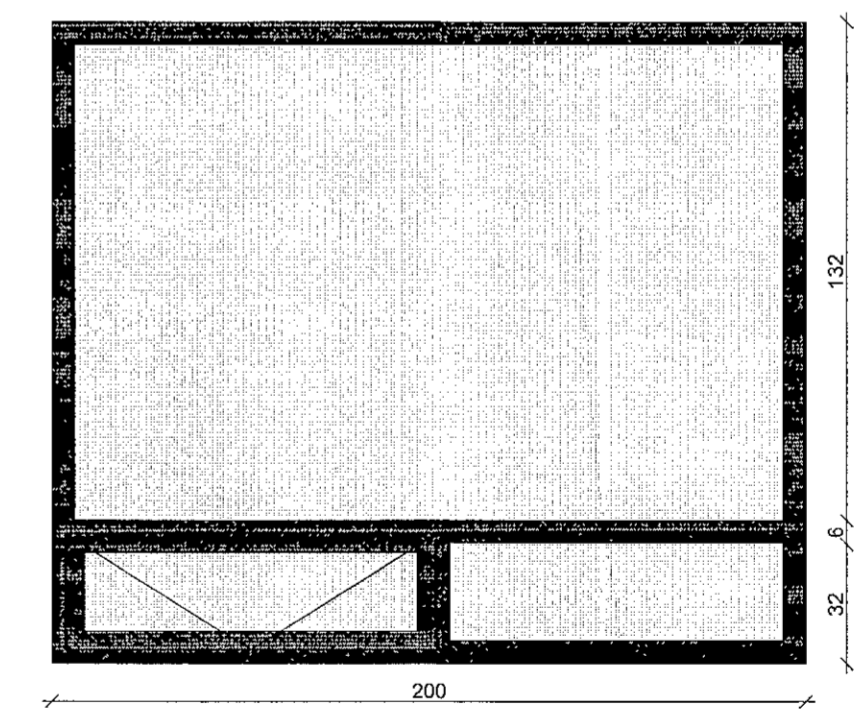
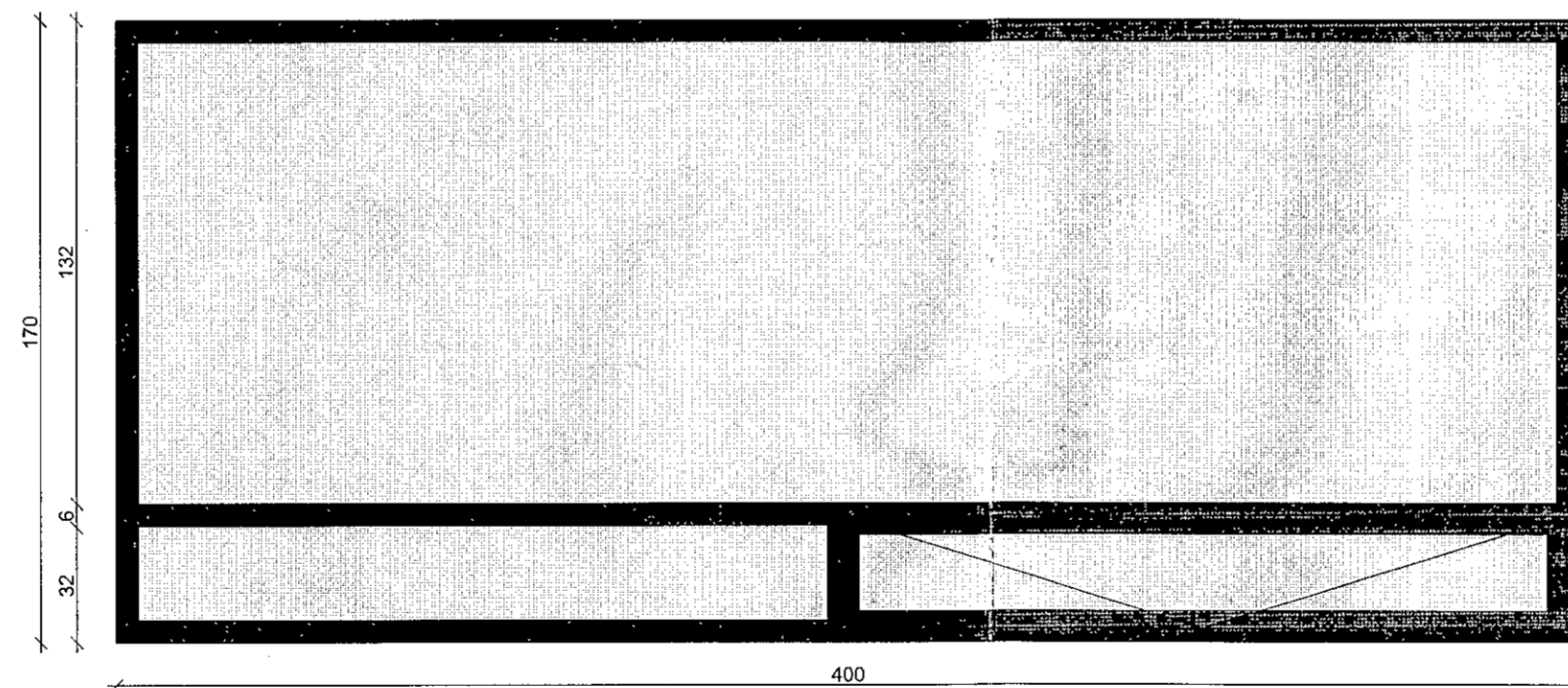
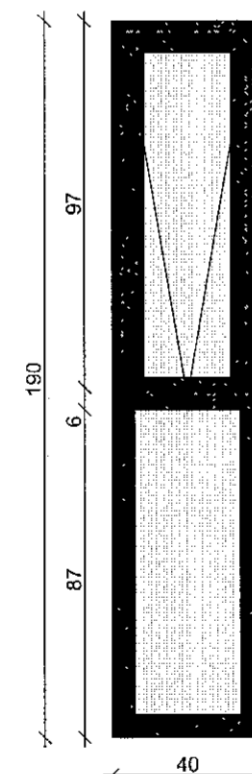
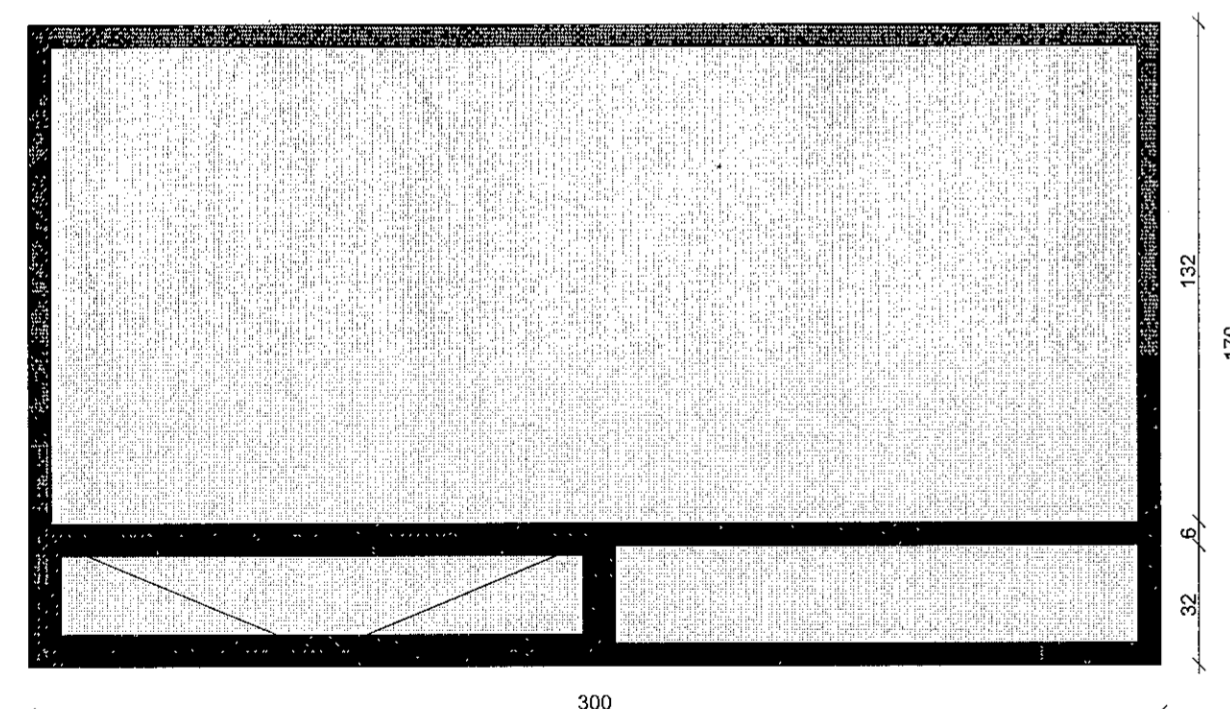


View from Reveal Side



ID	G1	G3	G4	G7
Fjöldi	30	6	4	6
Eldvörn				
Litur	RAL 8014	RAL 8014	RAL 8014	RAL 8014
LxH	135x170	180x170	180x170	300x170
Ath				
Opnun				
Stærð opunar	---	---	---	---

GLUGGAR



G8	G11	G21	G27
6	1	4	6
RAL 8014	RAL 8014	RAL 8014	RAL 8014
300x170	40x190	400x170	200x170
---	---	---	---

GLUGGAR

Alla glugga skal girða með galv. girði á hefðbundinn hátt og fúaverja með minnst tveimur umferðum af viðurkenndu fúavarnarefni td. CTDX.

Einnig skal fresa eða saga úr öllum gluggastykkjum 2x20mm fyrir vatnsbretti/flasningu allan hringinn.

Til festingar í steypu skal skrufa í karna 100 mm langar franskir skrúfur 30 mm frá hornum. Þessa glugga skal stífa vel af í steypumótum.

Gluggar eru:
Álkæddir Trégluggar

Þröskuldar: Lágir málmþröskuldar
Litur: RAL 8014

L: Vinstri opnun
R: Hægri opnun

Verk: Bergsskarð 3
GLUGGAR OG ÚTIHURDIR

Tekning: Gluggar og útihurdir
Verkaug: VHE ehf
Afmátt: Örn Árnason
Höfundarstjórn: Örn Árnason
Tolkað af: Jakub Urbaniak
Yfirtekið af: ÓA, PH

Dag: 17.12.2019
Kvart: 1:1
Stærð: A1
Fjöldi tekn.: 3

ZEPPELIN
ARKITEKTAR

4.1.1