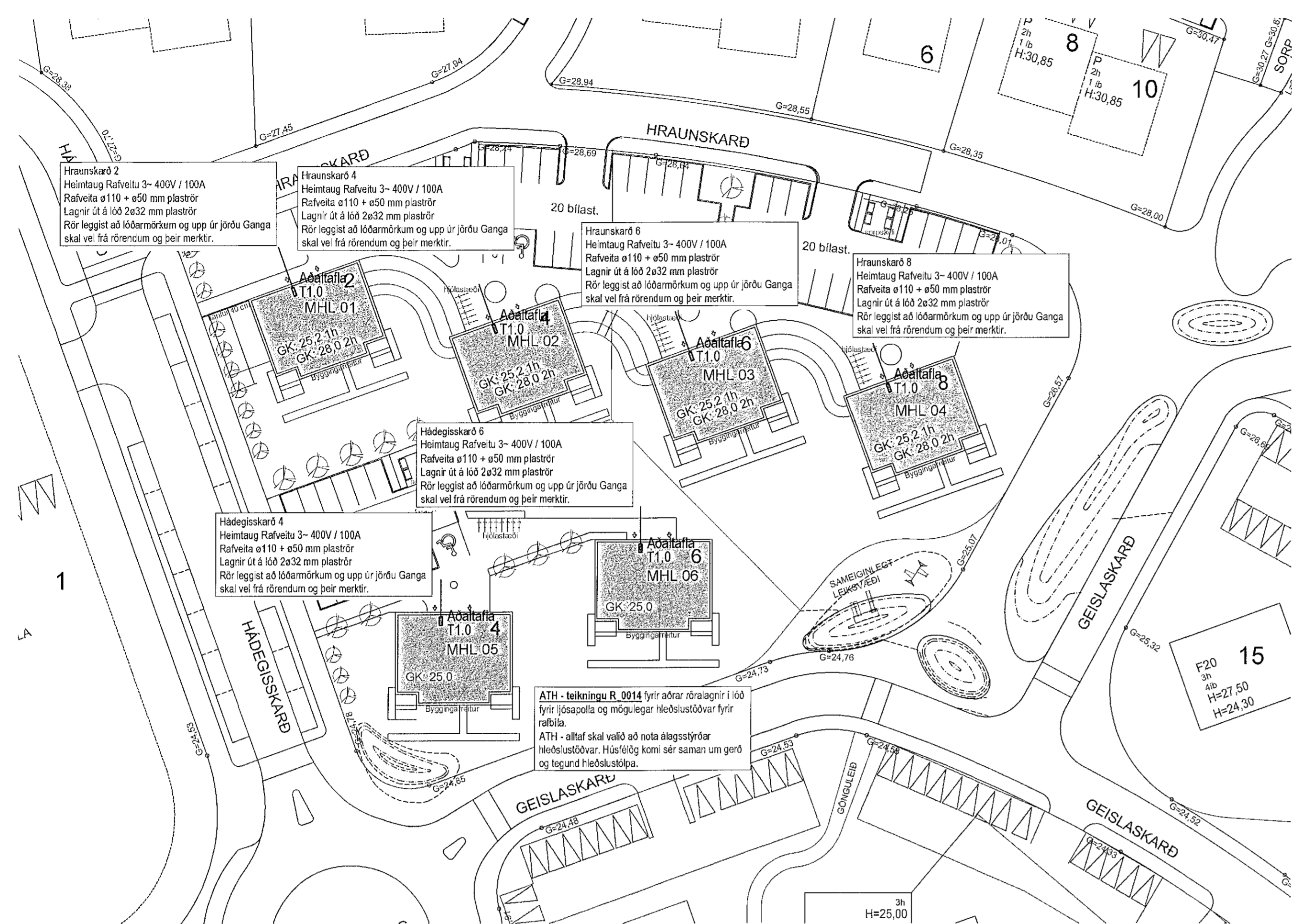
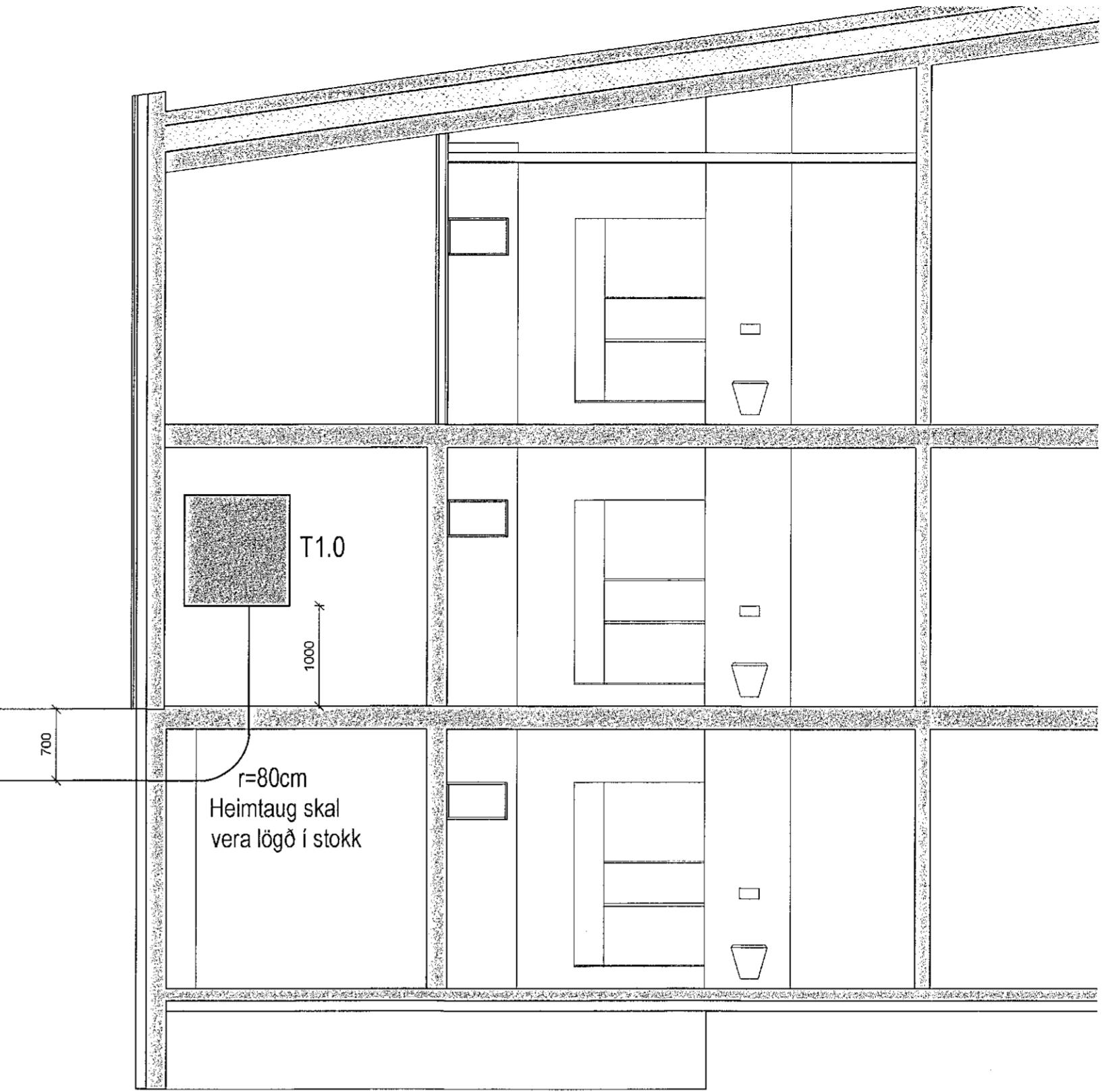


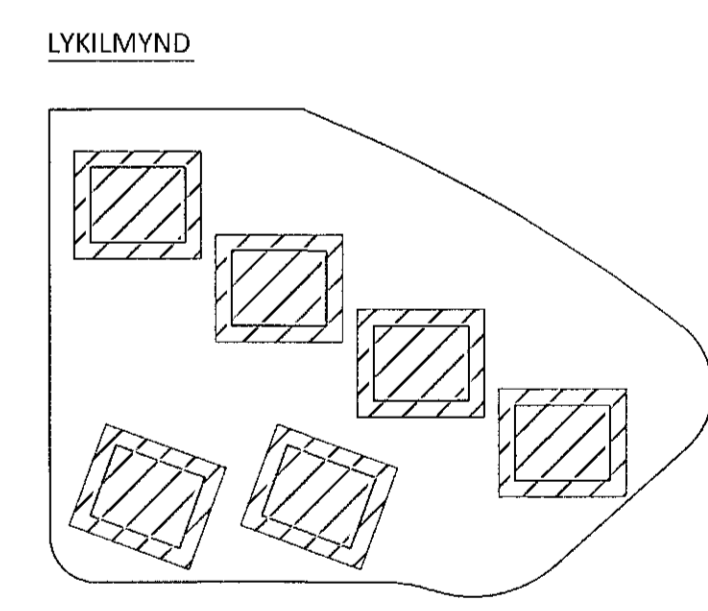
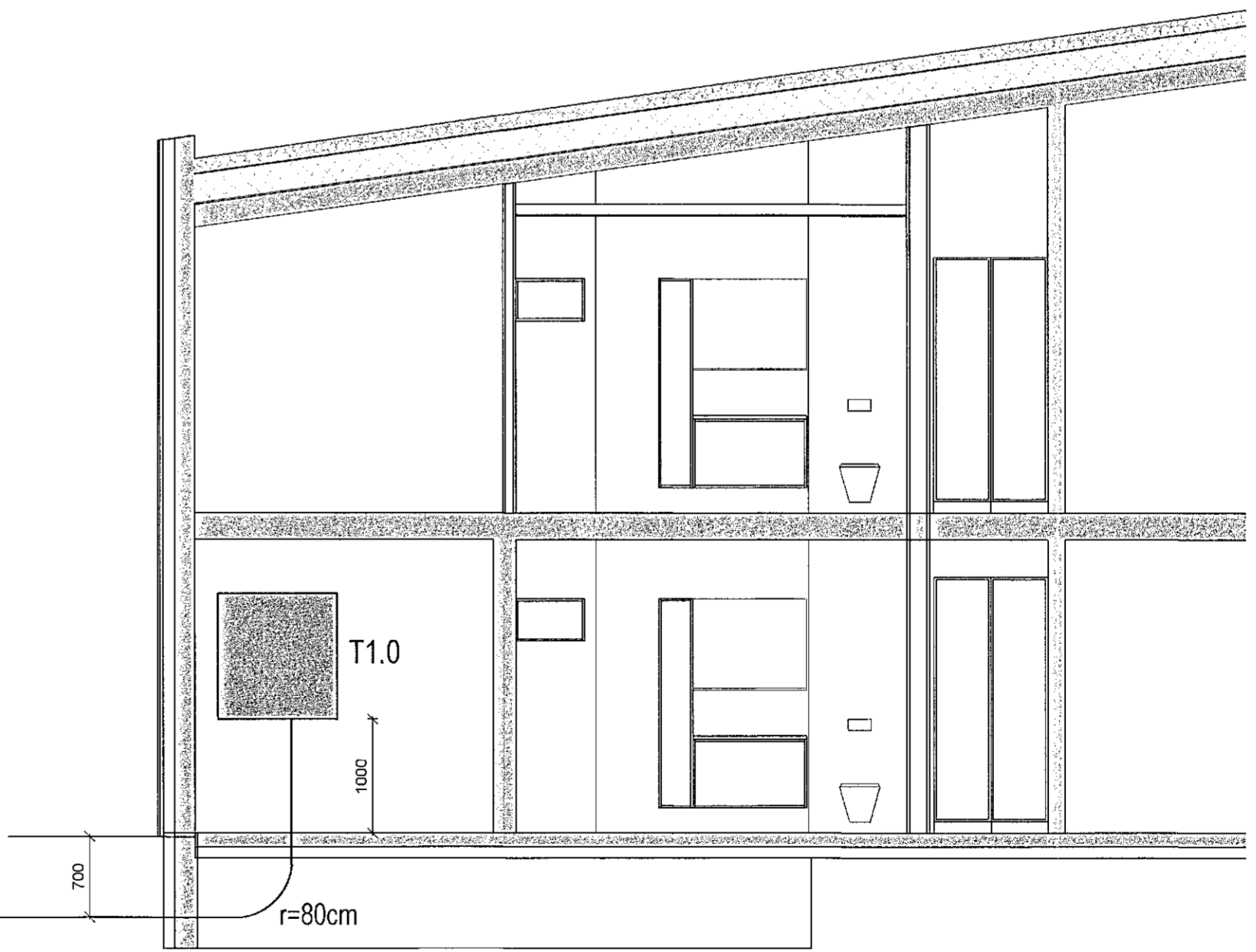
ÚTG.	DAGS.	ÚTGAUFERILL	HAUFVAD	TEKNI	YFIRF.
---	---	---	---	---	---
---	---	---	---	---	---
---	---	---	---	---	---
---	---	---	---	---	---
---	---	---	---	---	---
---	---	---	---	---	---
---	---	---	---	---	---
---	---	---	---	---	---
---	---	---	---	---	---



Hraunskarð 2,4,6 og 8
Heimtaug Rafvælu 3-400V / 100A
Rafvæla ø110 + ø50 mm plasttrör
Lagnir út á lóð 2x32 mm plasttrör
Rör leggjast að lóðarmörkum og upp úr jörðu Ganga skal vel frá rörendum og þeir merkir.



Hédegisskarð 4 og 6
Heimtaug Rafvælu 3-400V / 100A
Rafvæla ø110 + ø50 mm plasttrör
Lagnir út á lóð 2x32 mm plasttrör
Rör leggjast að lóðarmörkum og upp úr jörðu Ganga skal vel frá rörendum og þeir merkir.



Mannverk - Versión: 2011-08-2105
TESLA ehf
Rafagna- og lýsingarhönnun
Svanbjörn Einarsson, kt.180265-3339
698-2624, svanbjorn@teslaehf.is

Skarðshlíð Reitur 7
Hraunskarð 2,4,6,8 og Hédegisskarð 4,6
221 Hafnarfjörður

Rafkerfi
Afstöðumynd og snió
MHL 01-02-03-04-05-06

TEKNIÖMUR	SLAGSTAFUR	HAUFVAD	SVE
20200227.1	A1	TEKNIÖMUR	HWF
R_0002		YFIRFARIR	SVE
DAGS.	MELKVARIR	ÚTGAFA	
24.04.2020	1:50/500	A	

Dagsetning ábildaþátta: 2020-04-22
Höfundur: Svanbjörn Einarsson kt.180265-3339
Hönnunarskrif: *Svanbjörn Einarsson* Kt. 090982-3549

