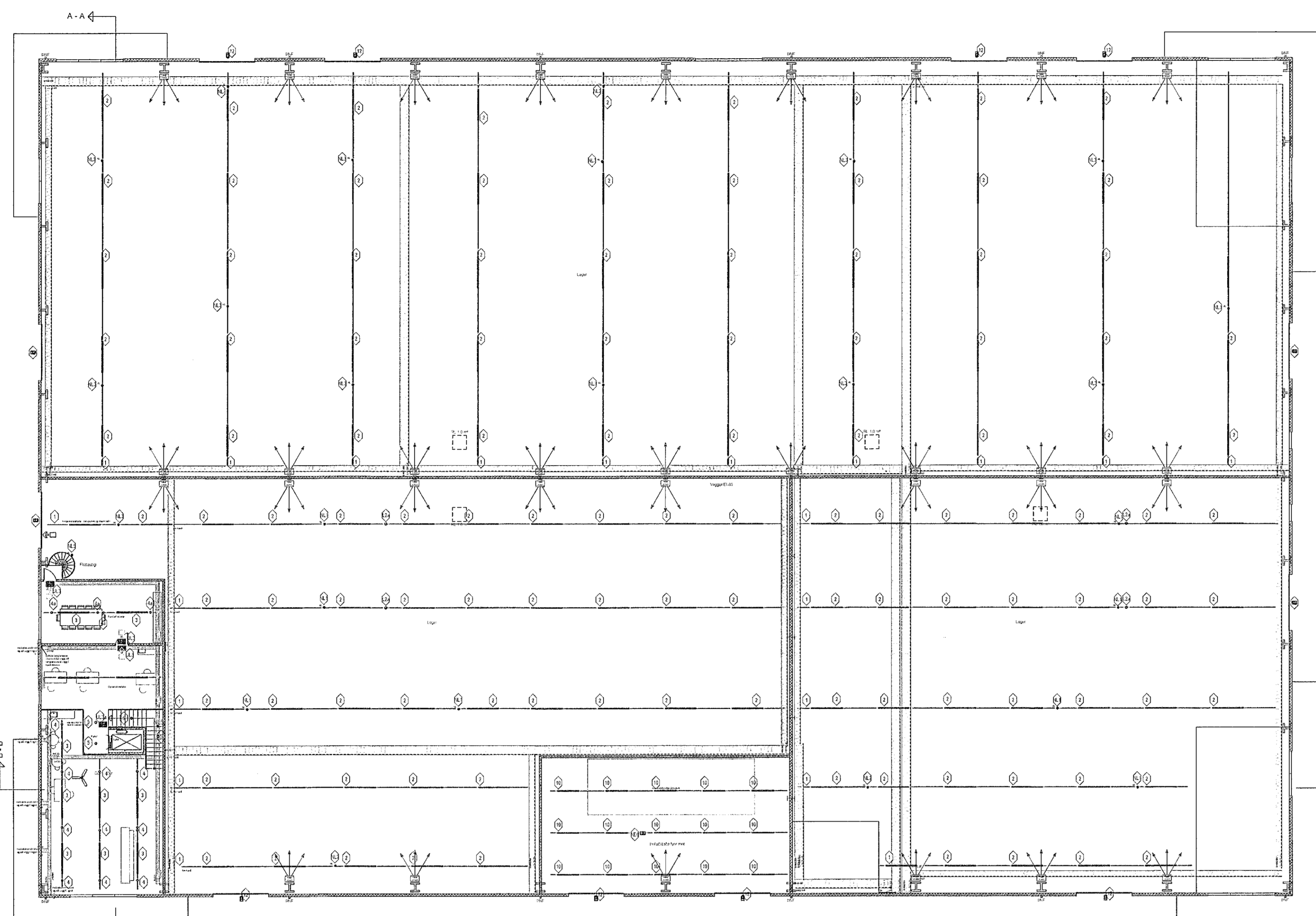


Samþykkt þann

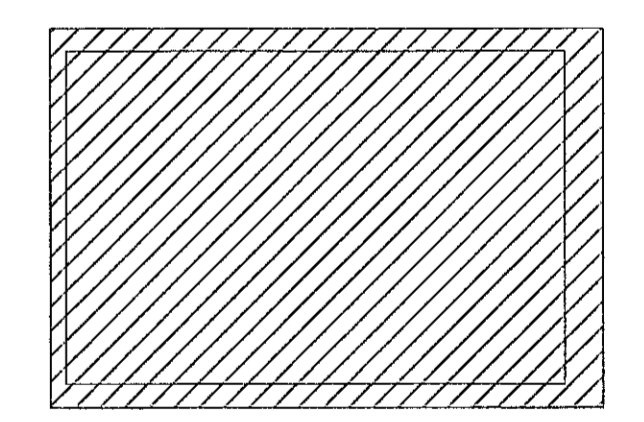
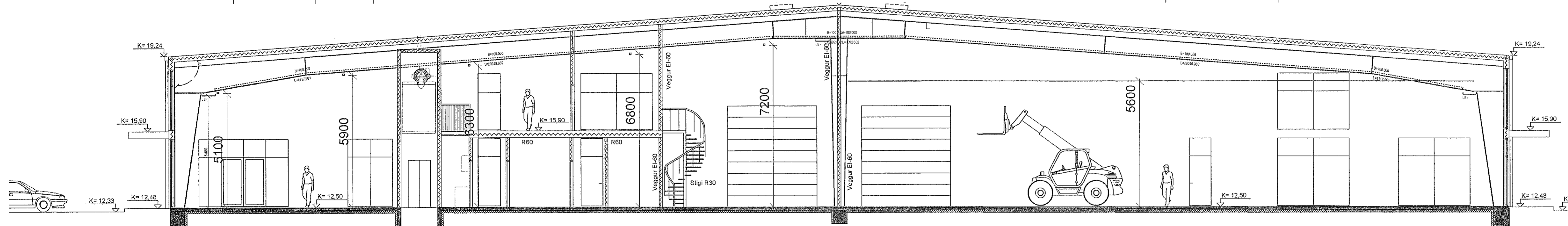
22. jan. 2021

F.h. byggingarfulltrúna í Hafnarfór
Sigurður Steinar Jónsson

ÚTG.	DAGS.	ÚTGAUFERIL	HÁRÞÁÐ	TEKNI	YFIRF.
A	2021.01.11	ÚTGEFIB	SVE	SVE	SVE
---	---	---	---	---	---
---	---	---	---	---	---
---	---	---	---	---	---
---	---	---	---	---	---
---	---	---	---	---	---
---	---	---	---	---	---
---	---	---	---	---	---
---	---	---	---	---	---
---	---	---	---	---	---



- 1 Zumbel Lampabraut 11 póla Tecton með upplengjum, inná- og útafengjum 4m 163
- 2 Zumbel Lampabraut 11 póla Tecton með upplengjum, inná- og útafengjum 2m 3
- 3 Zumbel DALI Led ljós á Tecton braut Std, 16.000 lumen WB L2000 - 840 124
- 4 Zumbel DALI Led ljós á Tecton braut Std, 10.000 lumen WB L2000 - 840 11
- 5 Zumbel DALI Kastarar belnt á Tecton braut, 840K*, 4-5000lm, 4400K gestill 24" 10
- 6 Zumbel DALI Kastarar belnt á Tecton braut, 840K*, 2500lm, 4000K gestill 24" 6
- 7 Utanhlýggjandi/hangandi DALI LEDstrokkljós 840K*, 2000-2500 lumen hvítt 4
- 8 Innfellt LEDstrokkljós 840K*, 2000 lumen hvítt DALI 6
- 9 Innfellt LEDstrokkljós 840K*, 2000 lumen hvítt on/off 6
- 10 Innfellt DALI LED lampi I T-prófil 840 um 5000 lumen 1
- 11 Undirkápaljós DALI LED prófil m.borða 4
- 12 LED ljós yfir spogli á salerni hvítt 840K* 8
- 13 IP65 Rakabött PMMA LED ljós 840K*, 6000 lumen 32
- 14 Innfellt Gúlljós í skyggni 840K*, 2000lm víður gestill 33
- 15 TRILUX LxStar 40-AMZL/10000-740, DALI stýring, 10.000 lm 63W 12
- 16 TRILUX rove 70-AB7/24.000-740 24G1 E120 24 DALI stýring, 189W ljósklú á Bin ljósbarsu einn víttar á hverri stúf sjá teikningu 01_14_01 34

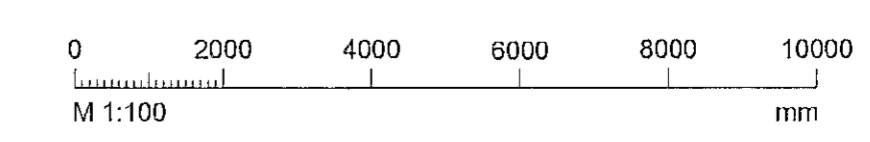


TESLA ehf
Rafagna- og lýsingarhönnun
Svanbjörn Einarsson, kt. 180265-3339
698-2624, svanbjorn@teslaehf.is

Iðnaðarhúsnæði
Selhella 1
221 Hafnarfjörður
Rafkerfi
Lampaplan, hitablásarar og Lagnaleiðir
2.hæð

TEIKNINUMER	BLAÐSTÍFERD	HANNAÐ	SVE
04032020.01	A1	TEIKNHAÐ	SVE
02_30_01		YFIRFAREIÐ	SVE
DAGS.	MÆLIKVARÐI	ÚTGAFA	
2020.09.22	1:50	A	

Drögskýning iðnaðarhúsnæðis, retdags
Höfundur Svanbjörn Einarsson kt. 180265-3339
Höfnunarskip Bjarni Þór Ólafsson
kt. 280769-3559



T:\Vekur\app\2020.09.04_Selhella 14_Vinnugignt\Templangar\1_30_Lampaplan.dwg

Handwritten initials and signatures: SE, BJ, PO, OA