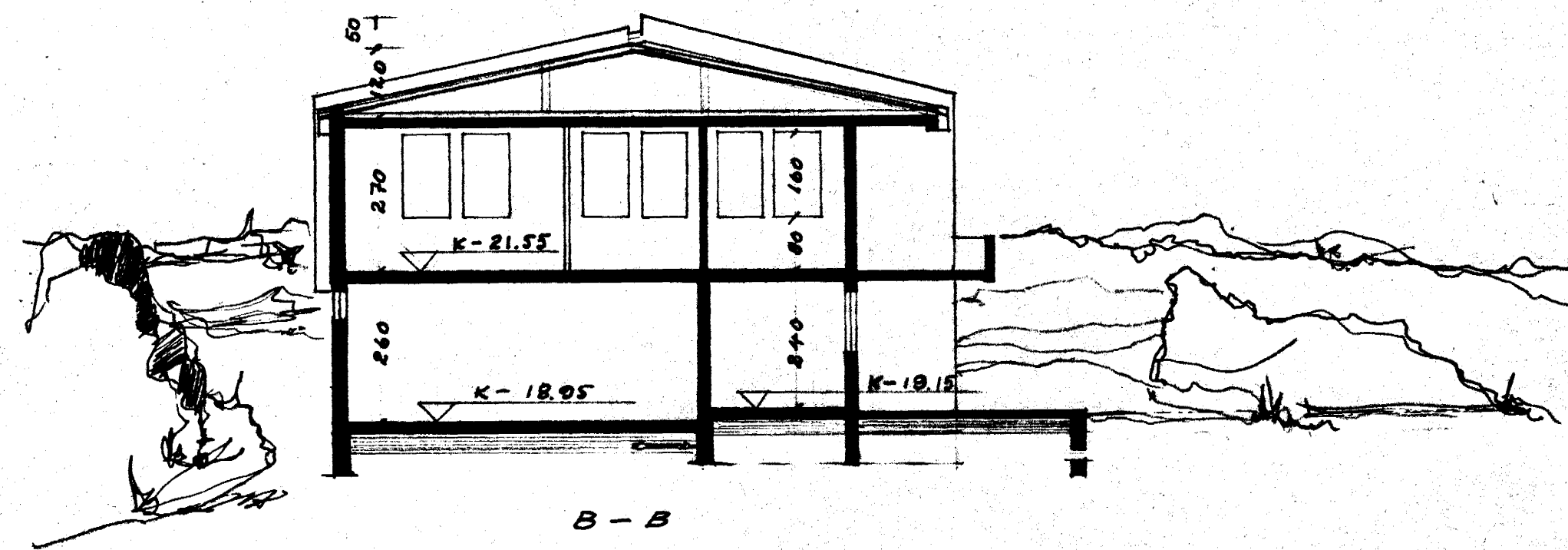
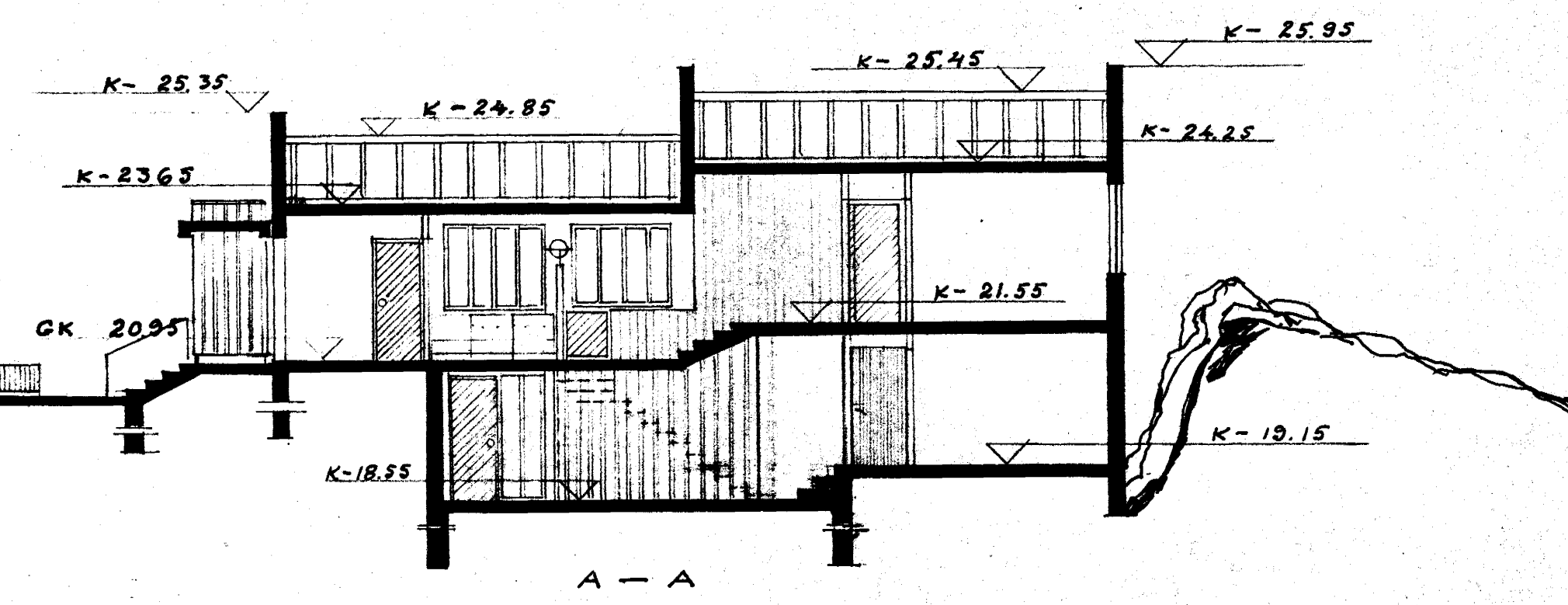
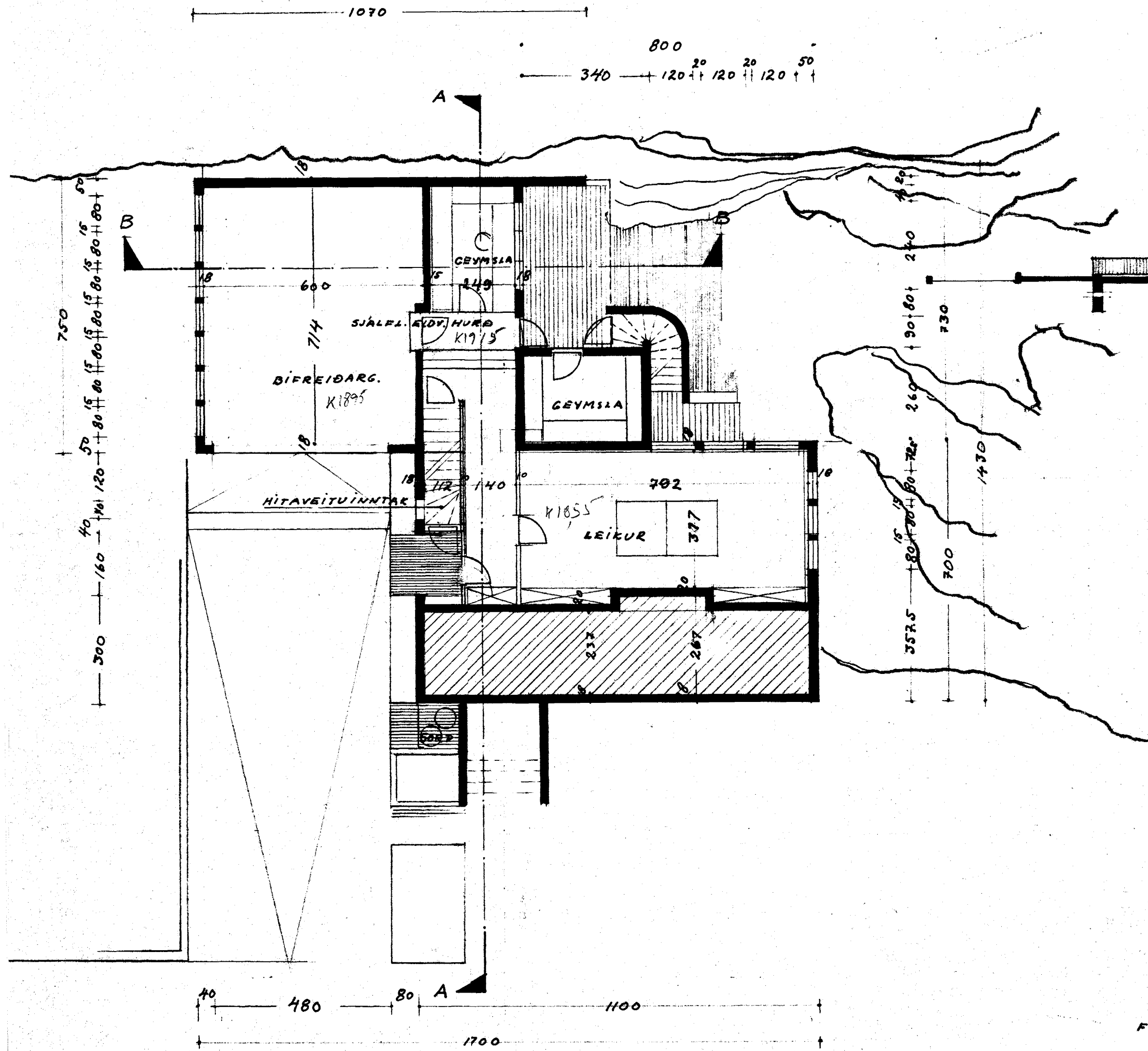


Samþykkt á fundi bygginga-
nefndar þ. 23/6 1976
BYGGINGAFULLTRÚI N
Í HAFNARFIRÐI
F. Jónsson

Ganga skal frá opnu
eldstæði í samráði við
slökkuðsáttara



FLATARMÁL	BÍLCEYMSLU	46.5 m ² BRUTTO	x 2.60 =	120.9 ~ 121 m ³	121
"	KJALLARA	81 m ² "	x 2.40 =	194.4 ~ 194	
"	140)	144 m ²	x 2.70 =	388.8 ~ 389	
"	javl	144 ~	x 0.70 =	100.8 ~ 101	
				<u>684</u>	
				805 m ³	@ 1/65 = 9,378,-