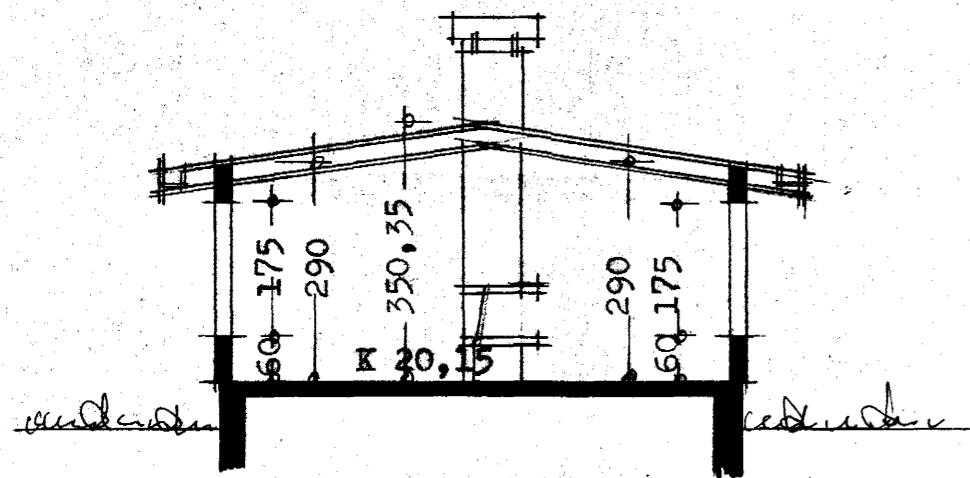
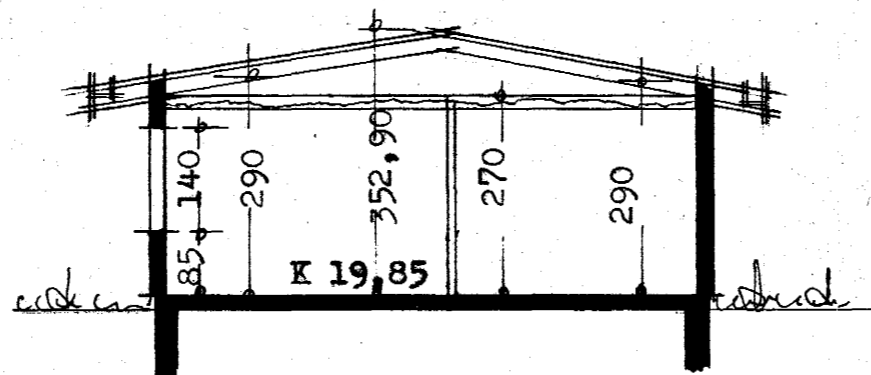


Samþykkt á fundi bygginga-
nefndar þ. 19.5.1976
BYGGINGAFULLTRÚFIN
Í HAFNARFIRDI

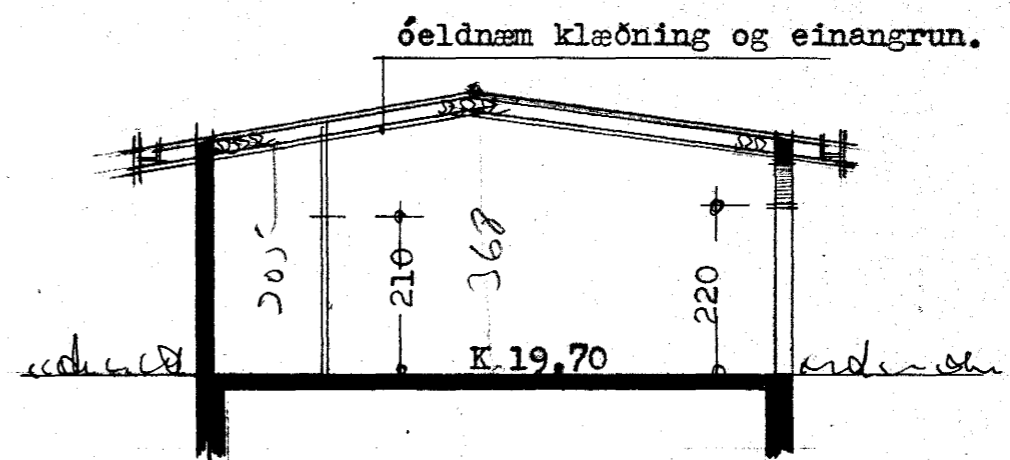
Ganga skal frá önnu
eldstæði í samráði við
súkkvildisgjafa



Skurður A-A

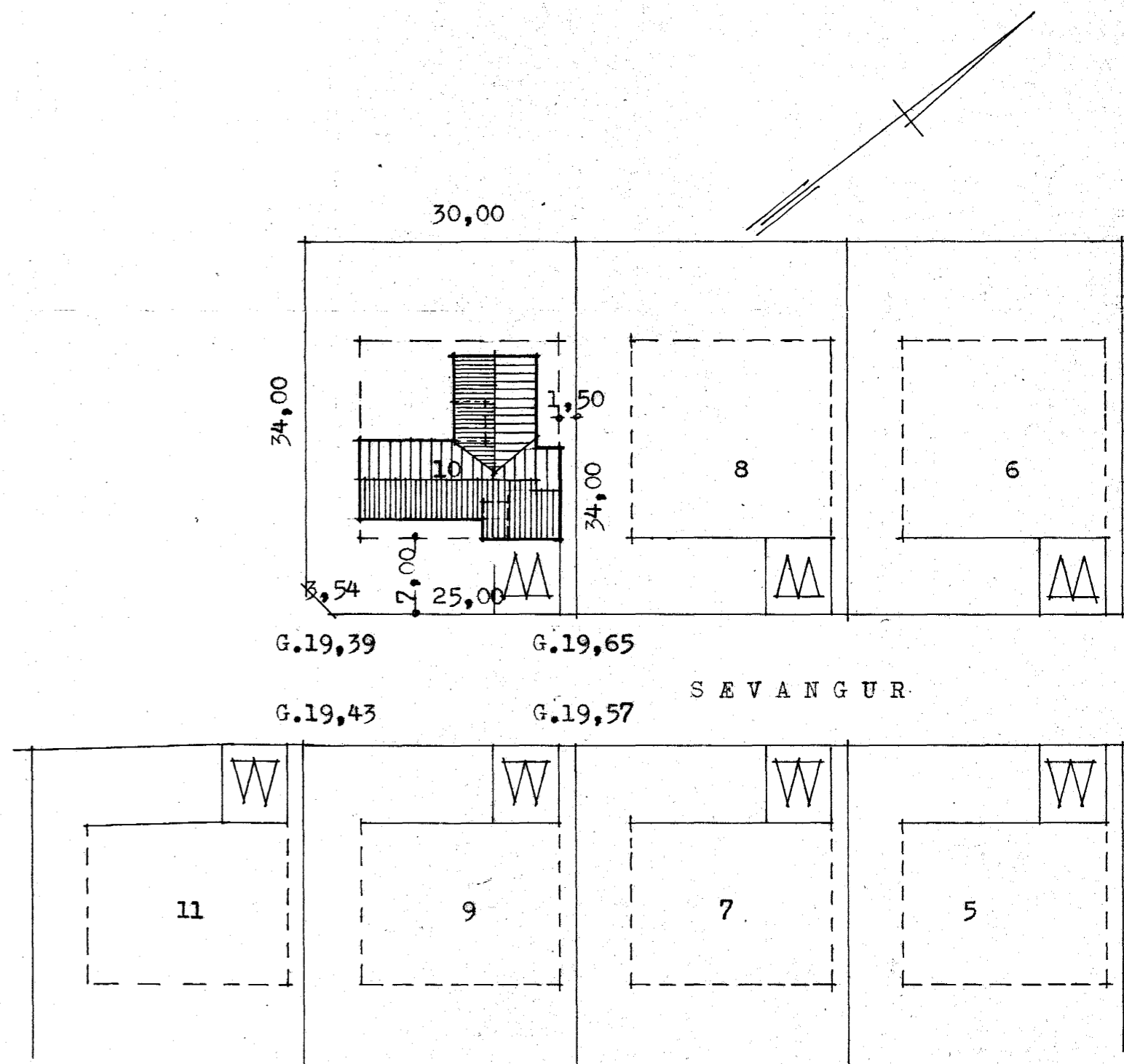
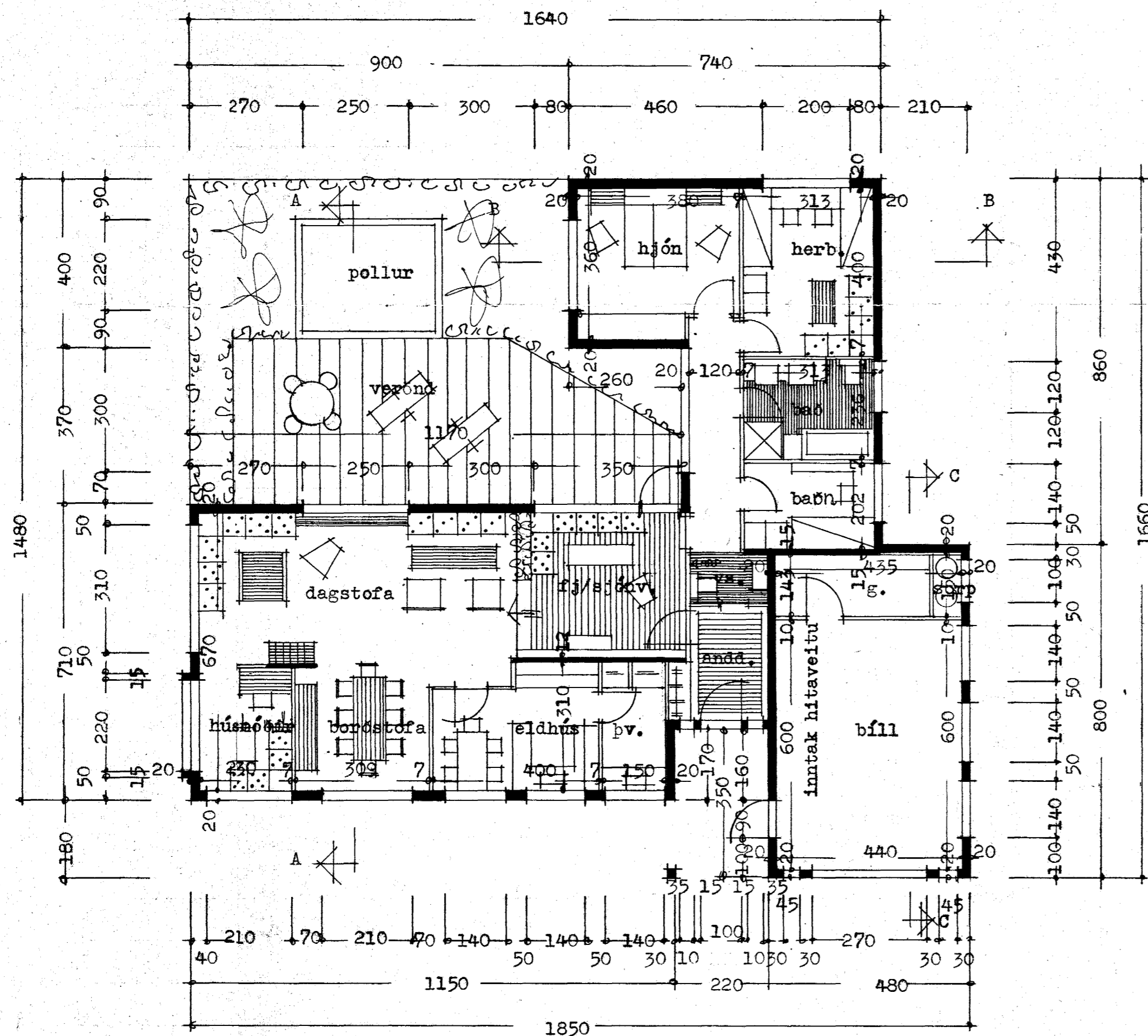


Skurður B-B



Skurður C-C

óeldnæm klæðning og einangrun.



Afstöðumynd 1:500
Flatarmál húss 143,43 m²
Flatarmál bílsk. og g. 37,92 m²

Reykjavík í maí 1976

J. Jartan Sveinsson