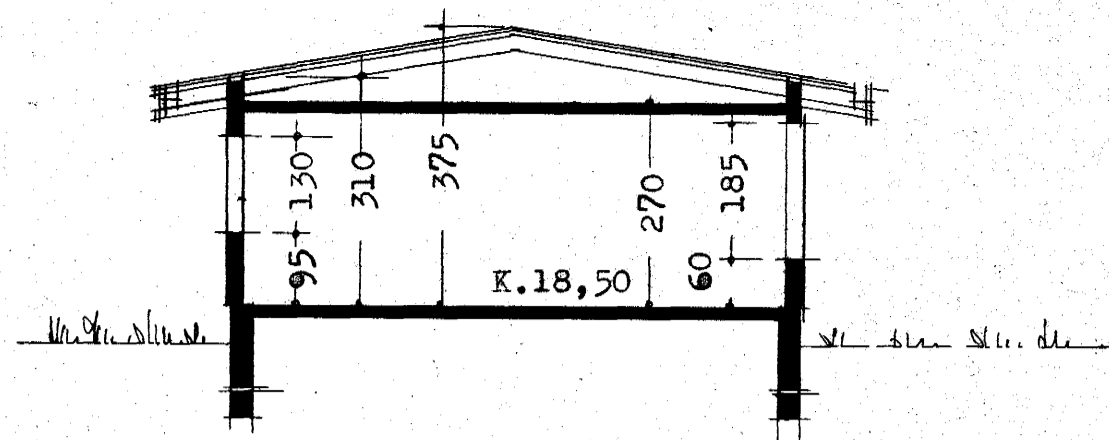
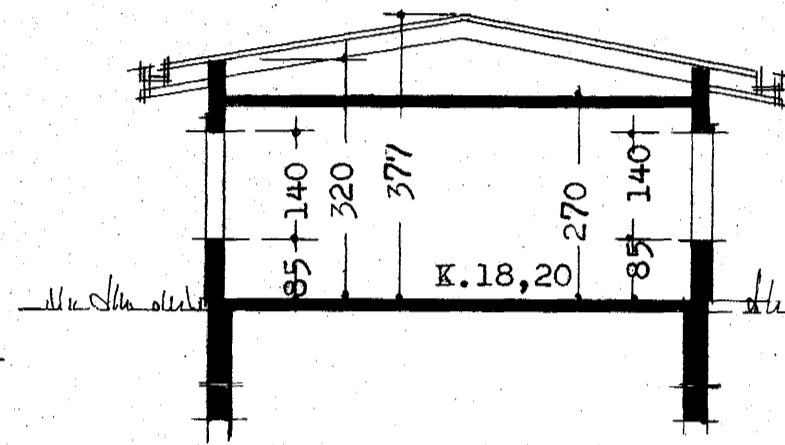


Samþykkt á fundi bygginga-
nefndar þ. 29/3 1978
BYGGINGAFULLTRÚINN
Í HAFNARFIRÐI

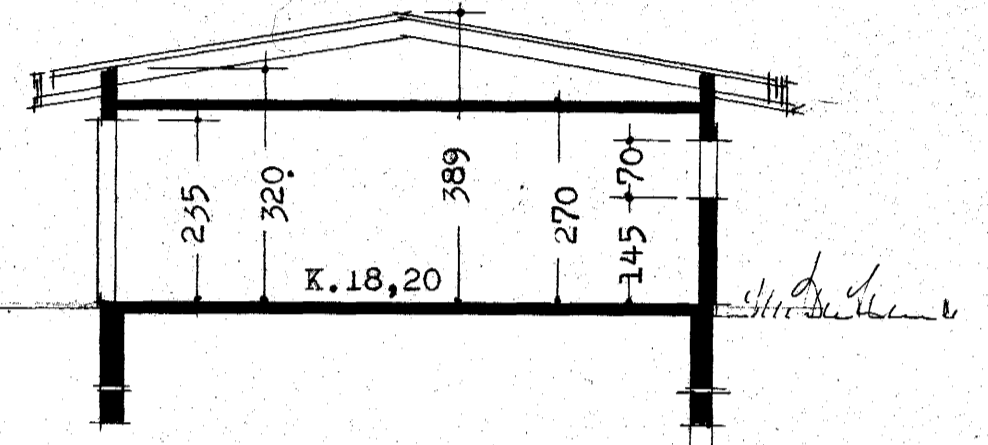
Ganga skal frá önnu
eldstæði í samráði við
slökkviliðssjóra



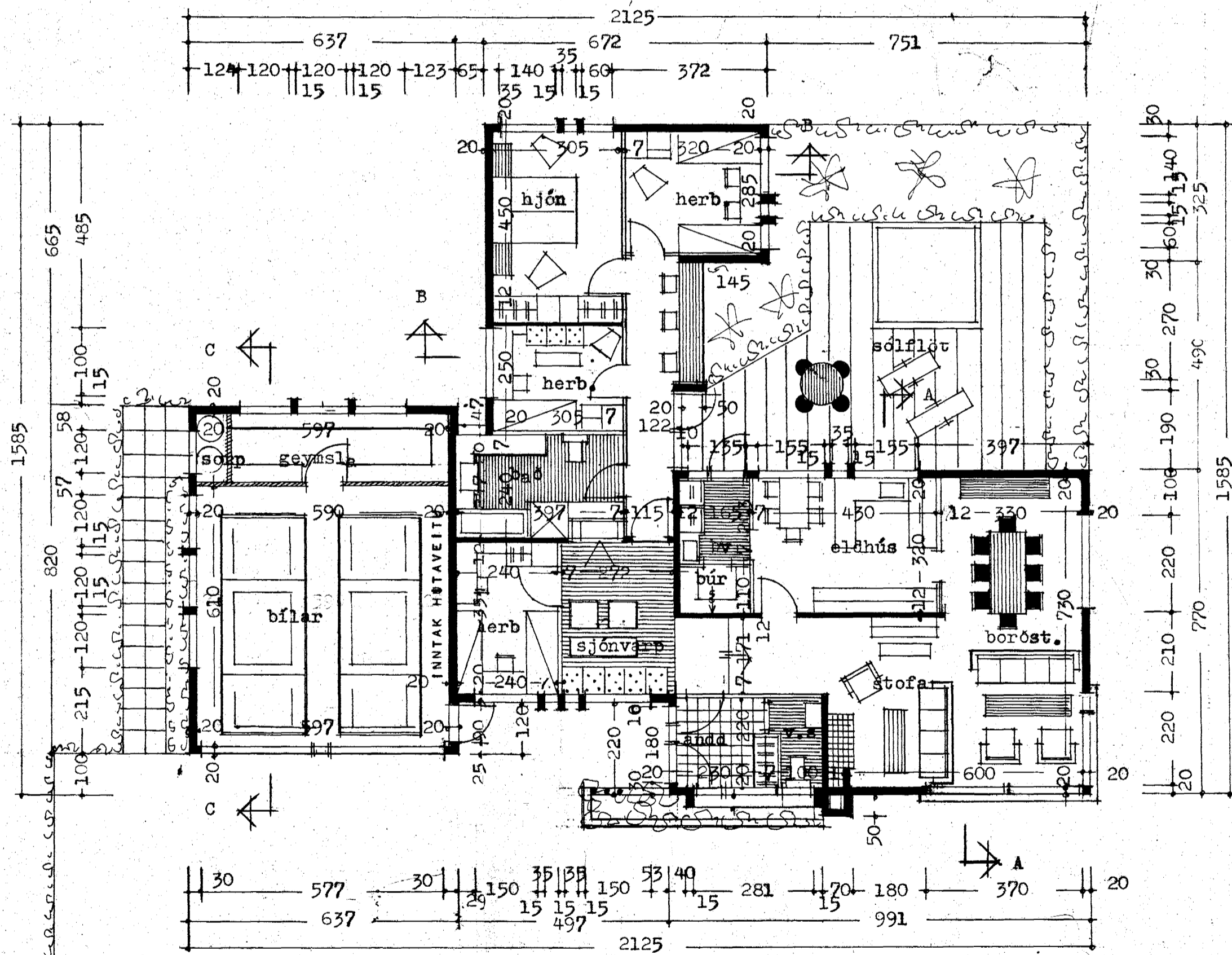
skurður A-A



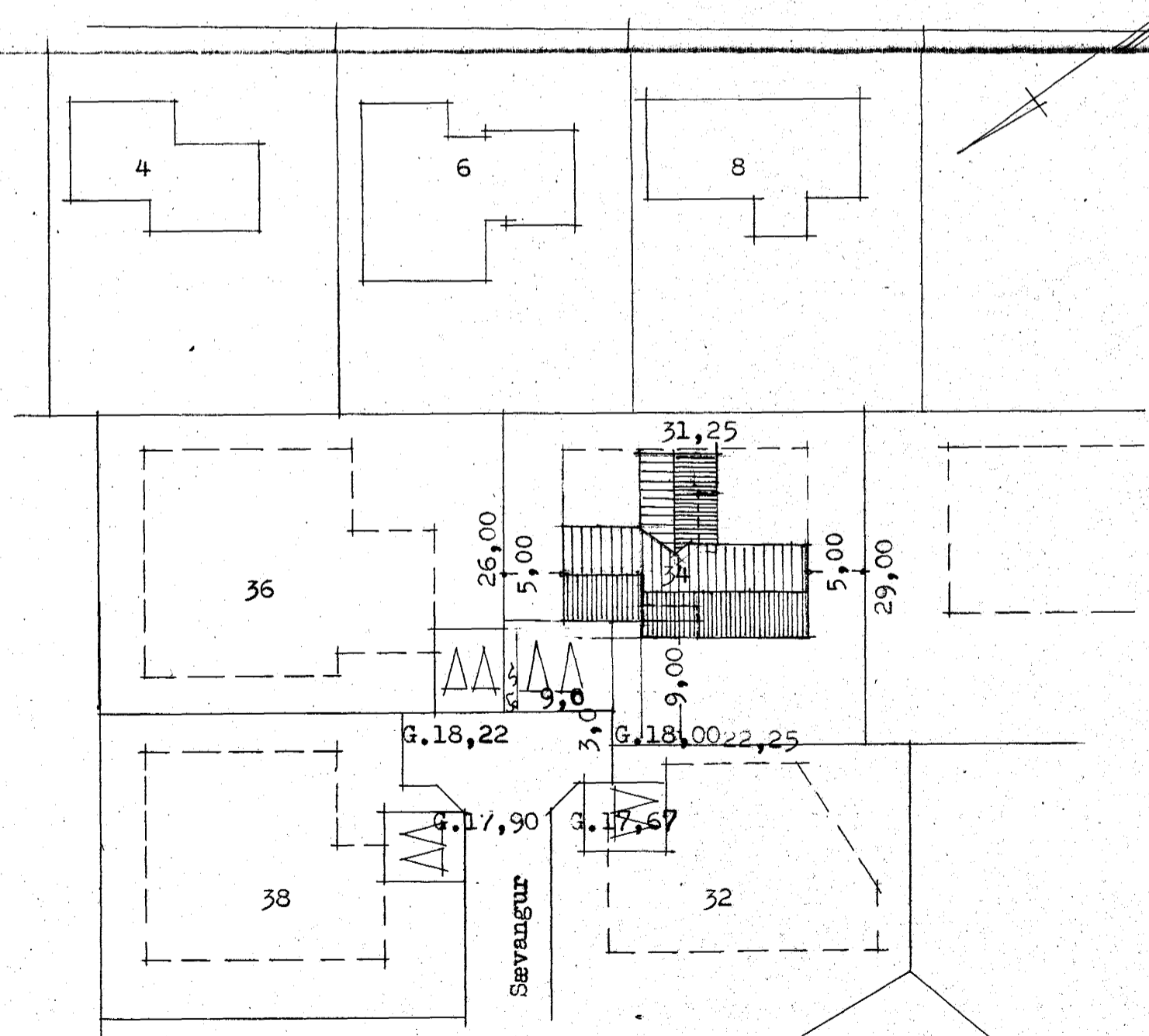
skurður B-B



skurður C-C



Grunnmynd



Afstöðumynd m.1:500

Flatarmál húss 153,2 m.²
Flatarm.bílsk. 50,0 m.²

Reykjavík í mars 1978

Bjartan Sveinsson