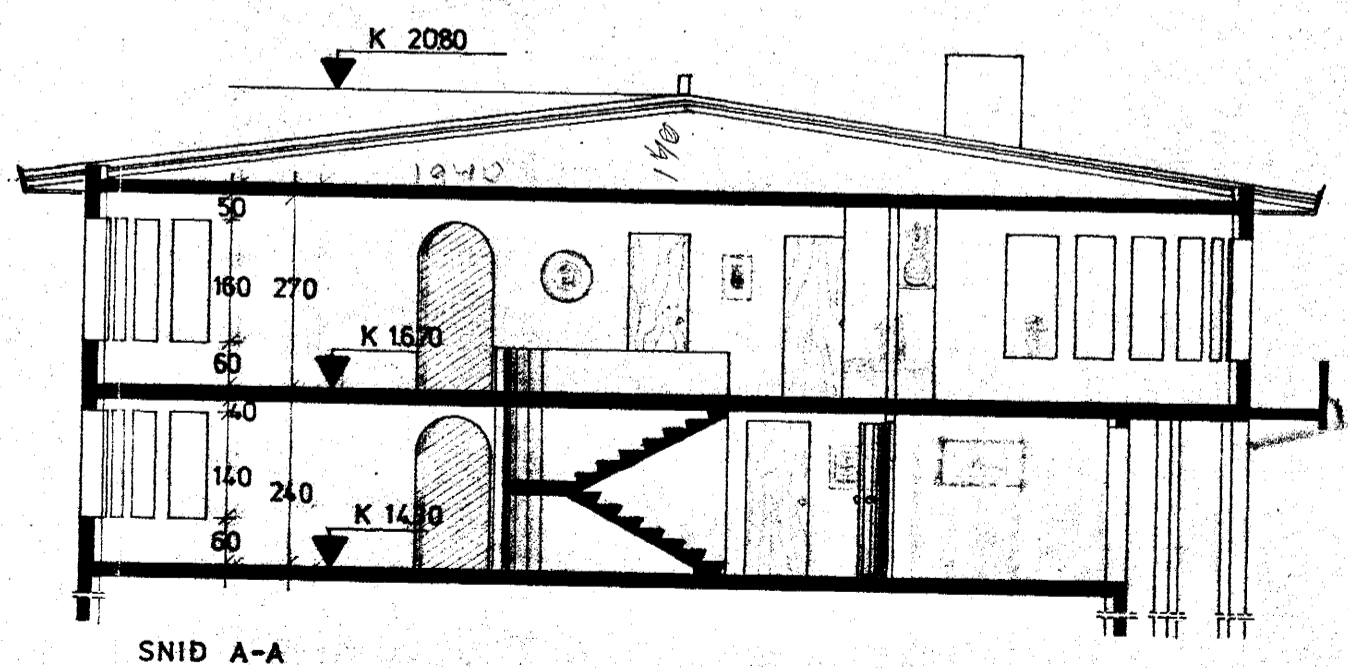
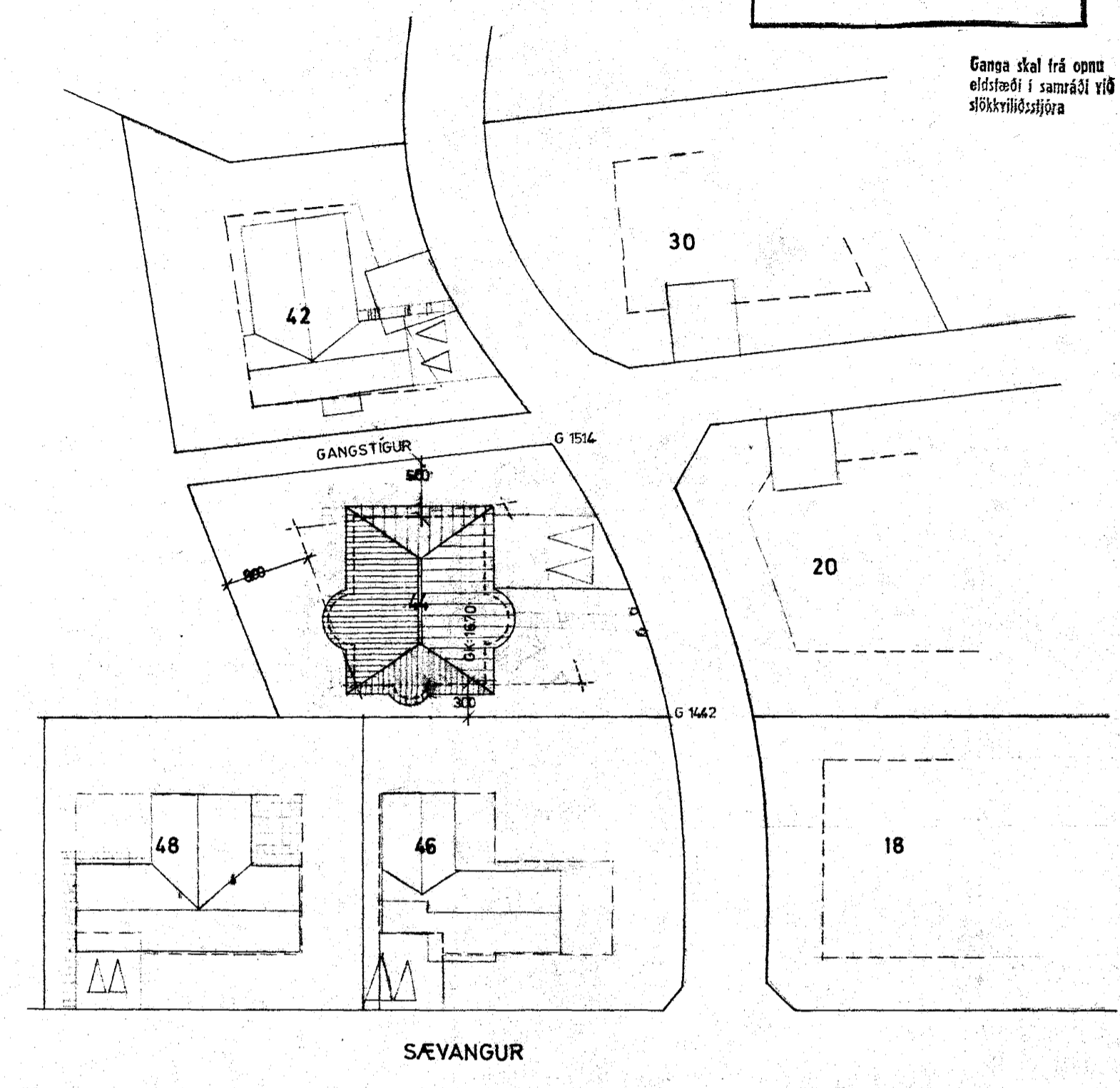
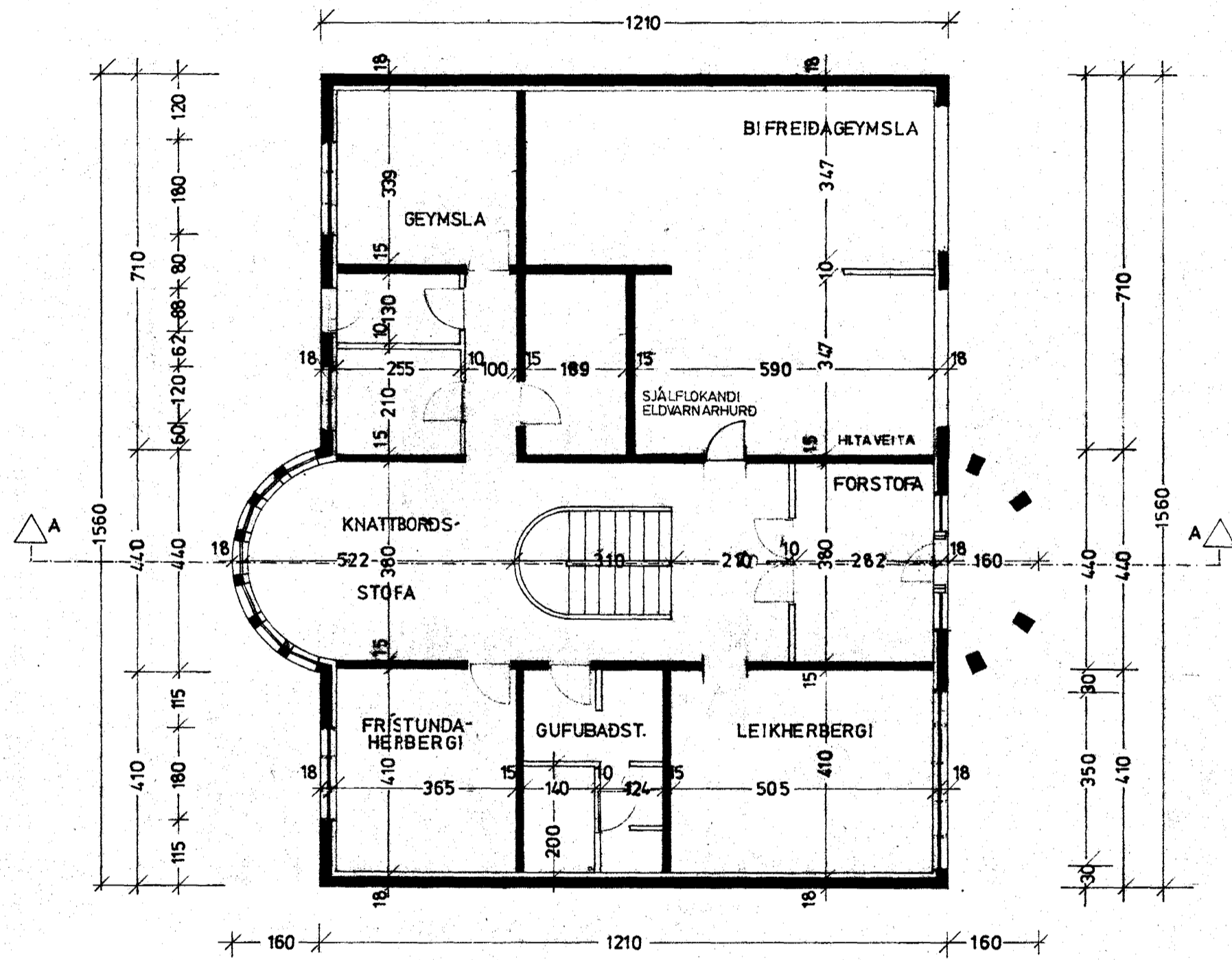


Samþykkt á fundi bygginga-
nefndar þ. 22.15.1978
BYGGINGAFULLTRÚIN
Í HAFNARFIRÐI

Ganga skal frá opnu
eldstæði í samráði við
slökkviliðsstoðara



JARÐHÆÐ	141.8 m ²	340.7 m ³
I HÆÐ	184 m ²	496.8 m ³
ÞAKRYMI		119.0 m ³
		<hr/>
BIFR.G.	51.2 m ²	122.9 m ³
		<hr/>
		1079.0 m ³