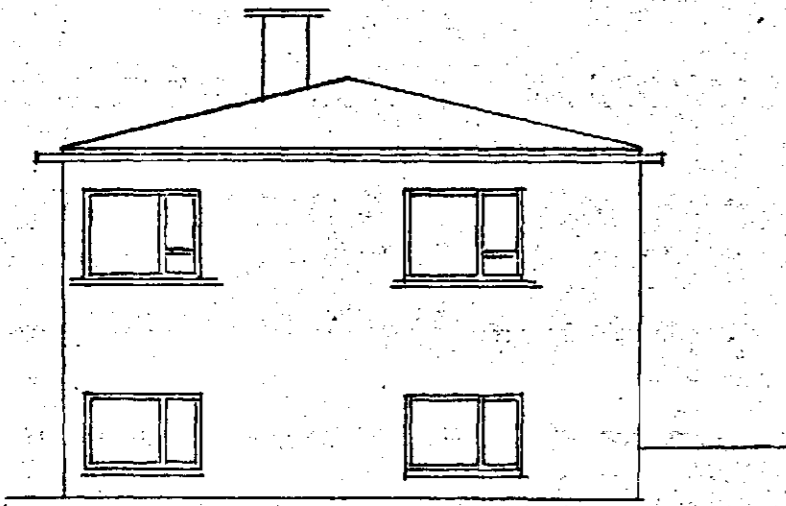
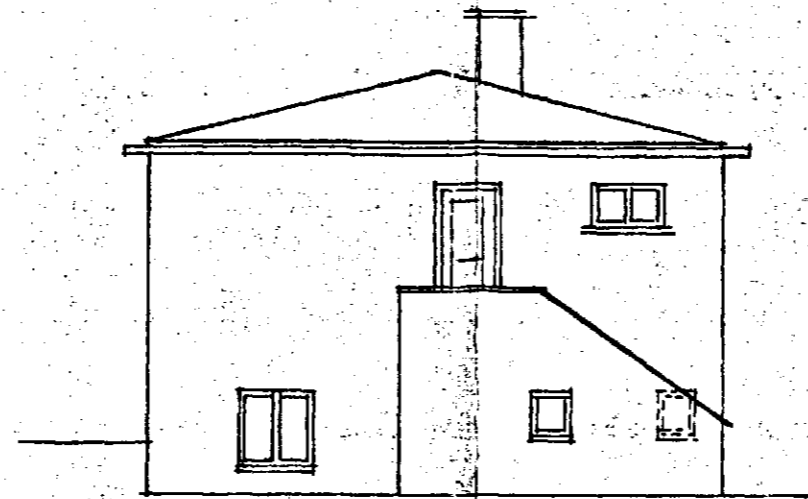


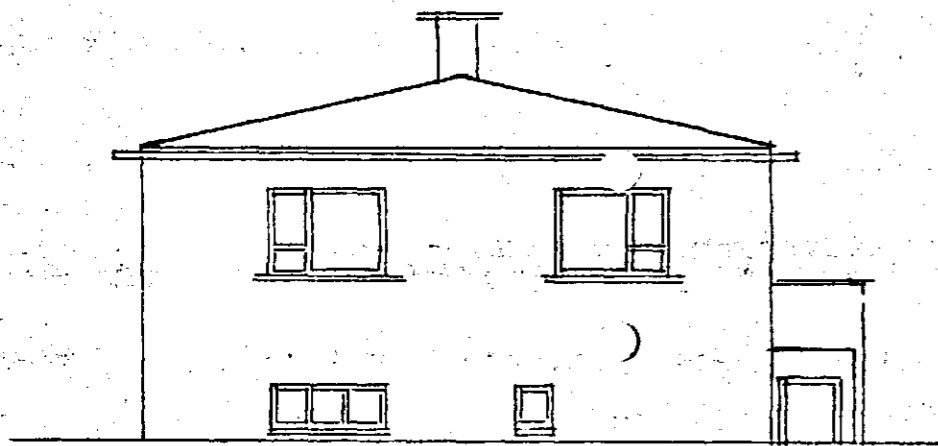
# ÍBÚÐARHÚS JOHANNIS NIKULÁSSONAR



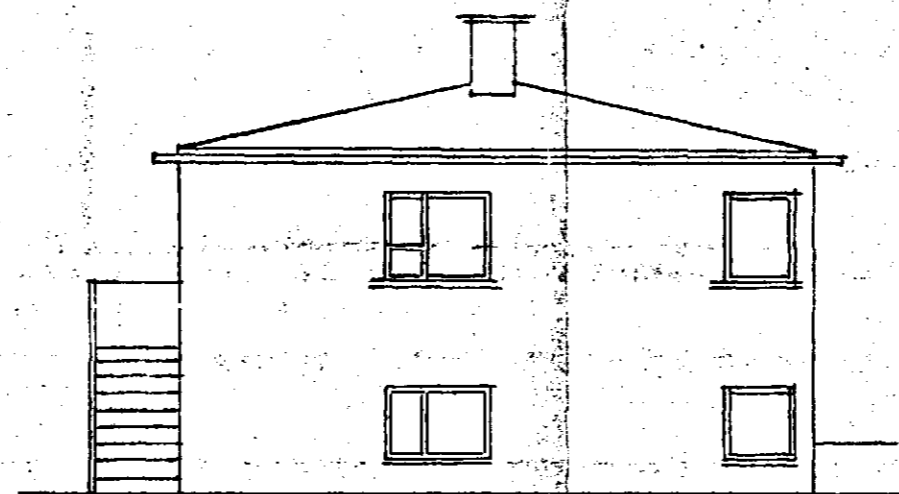
Vesturhlíð



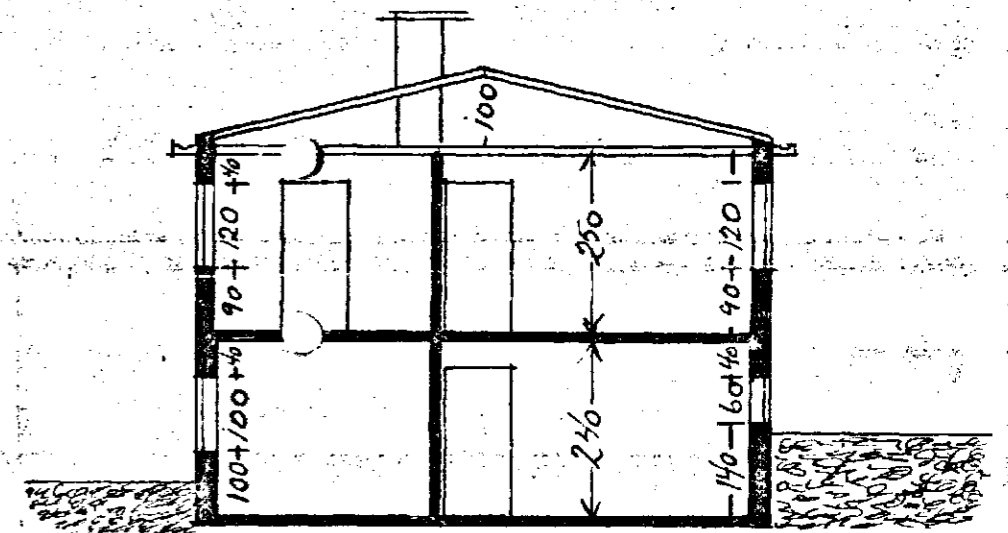
Austurhlíð



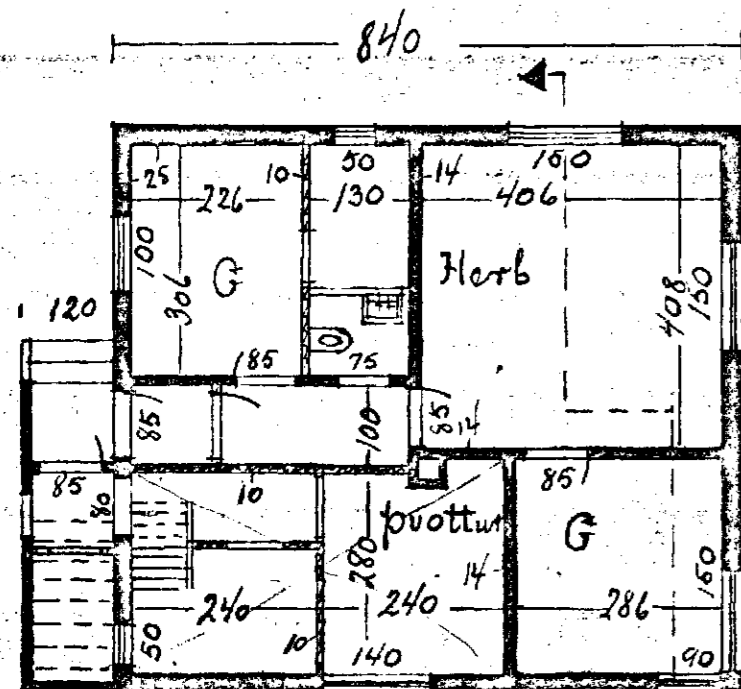
Bakhlíð



Götuhlíð



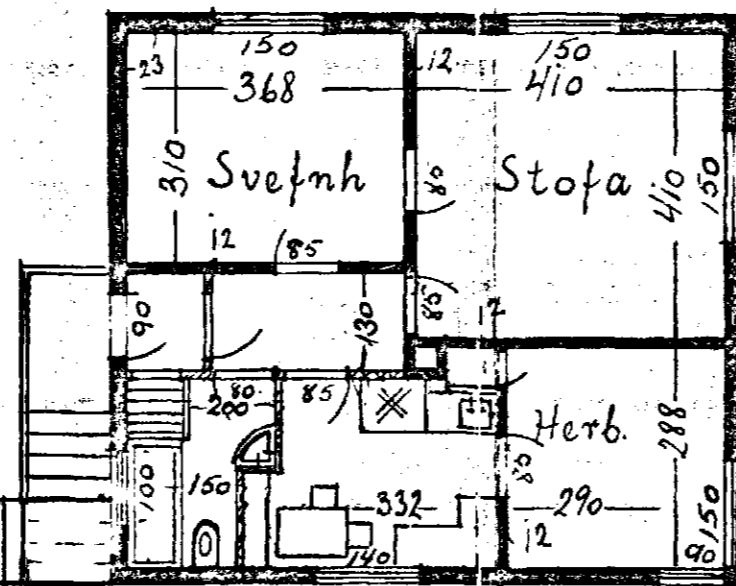
Þverskurður



II = 75%  
Kjallari I = 25%

Samp 23/84

Brúlingur á þröppum



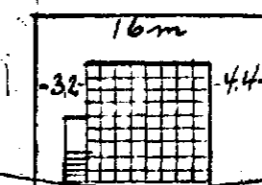
Sampykkt af nedri ibium 1. hæð

Kristín Helgadóttir 5751-3042  
Gísli Yón Gíslason 2667-6398

M 1:100

Afstöðumynd  
1:500

húsi 63.84 m<sup>2</sup>



Skerscyrarvegur 4

Reykjavík 11. júlí 1942  
Skúli O. Theodórs