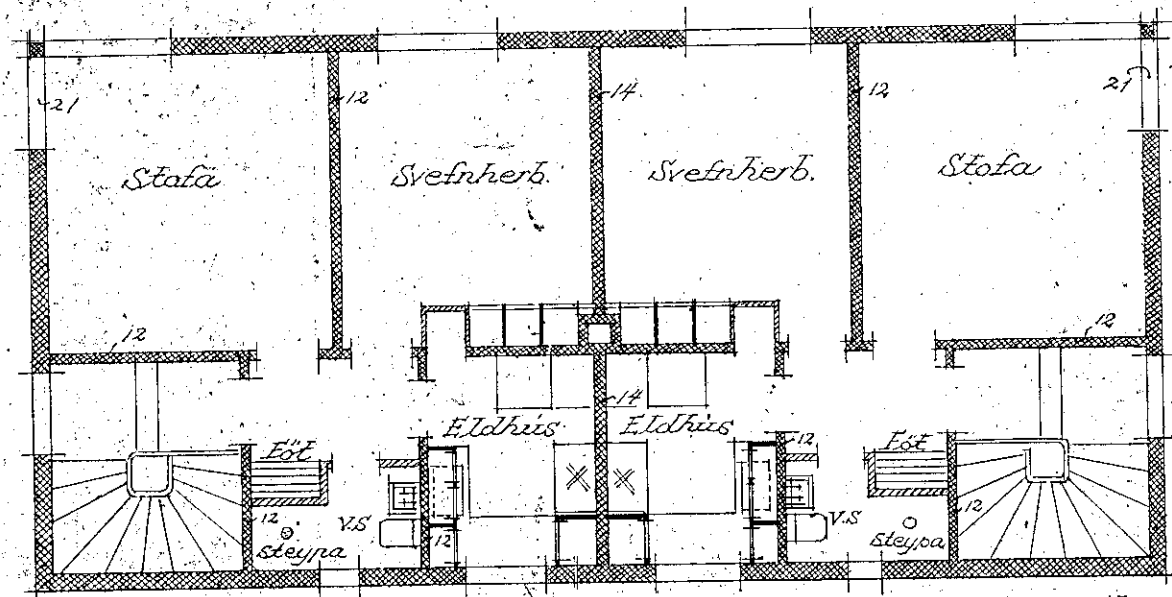
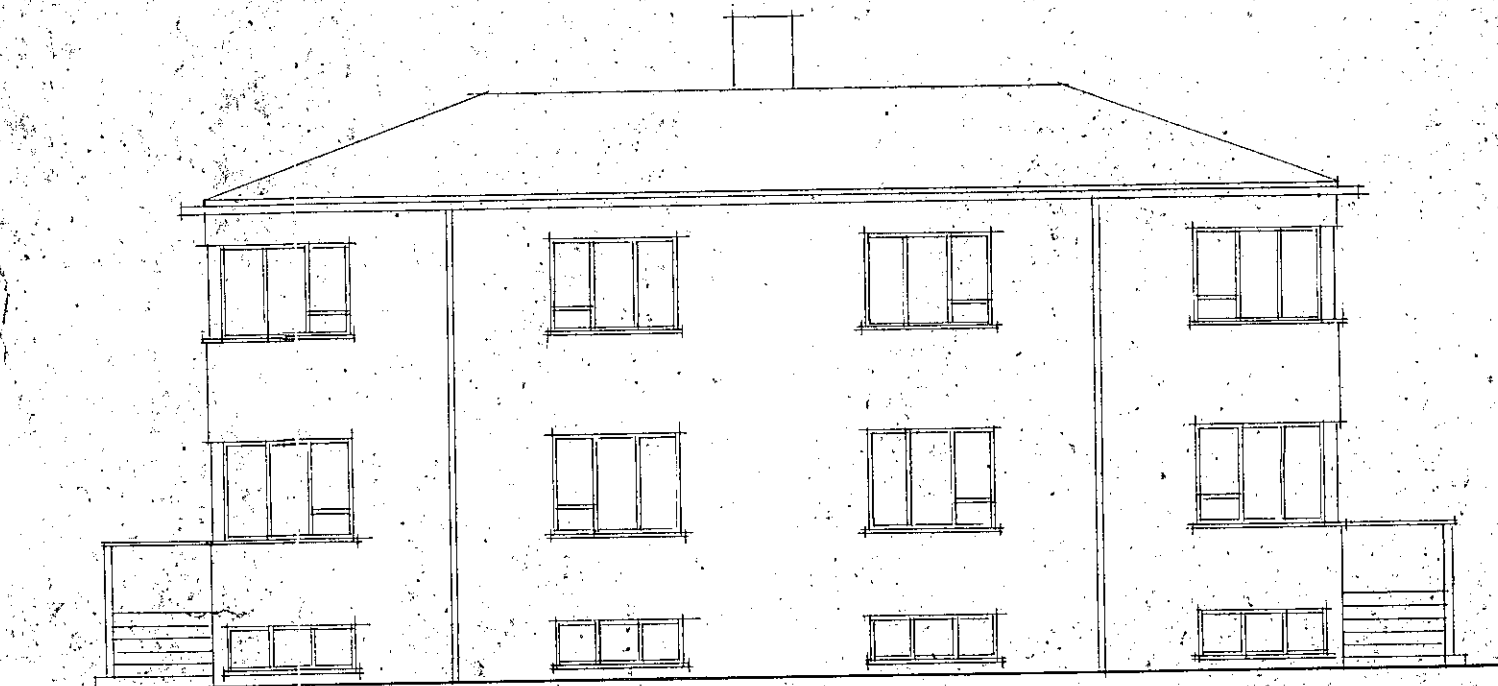


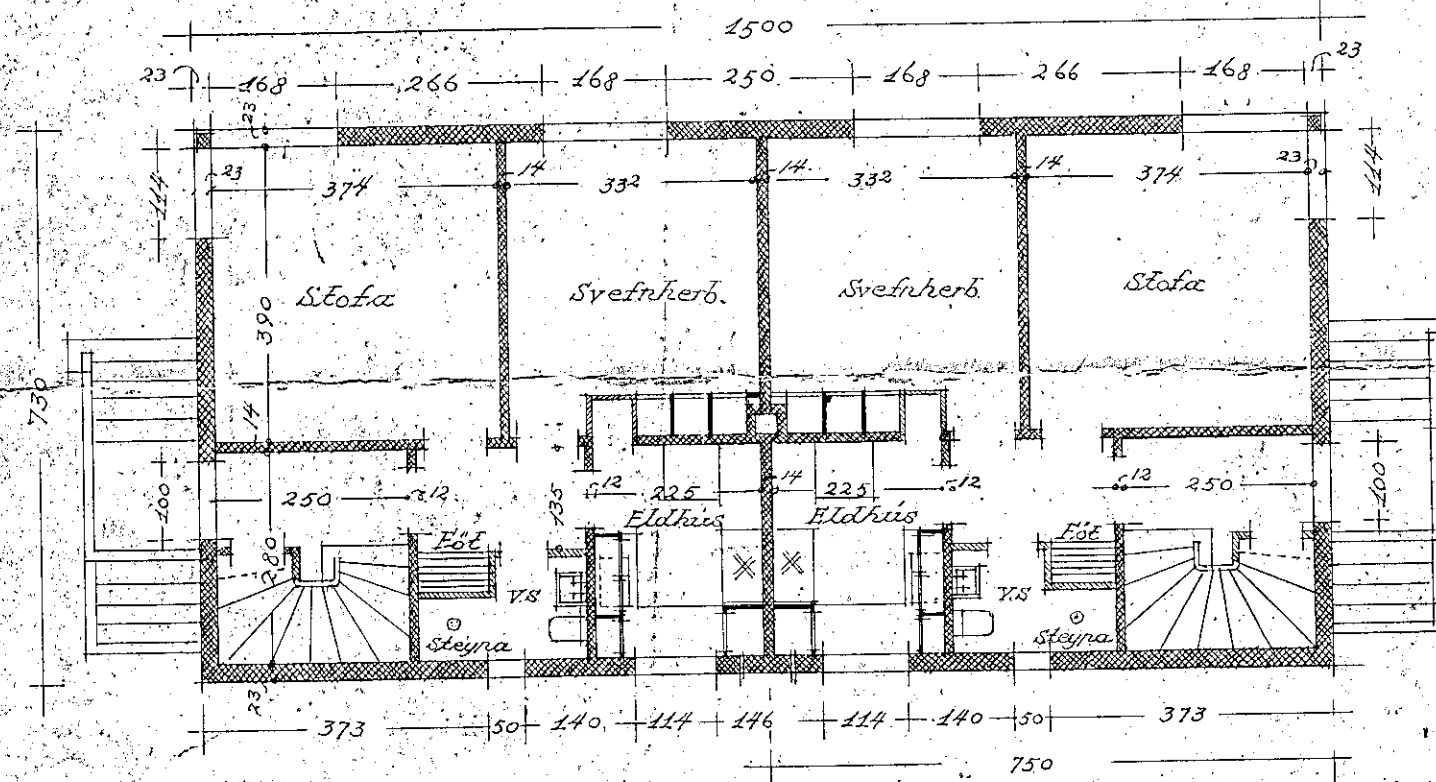
Samþykkt á fundi bygginga-
nefndar þ. 22/2 1946
BYGGINGAFULLTRÚFINN
Í HAFNAREIRDI
E. Gunnarsson



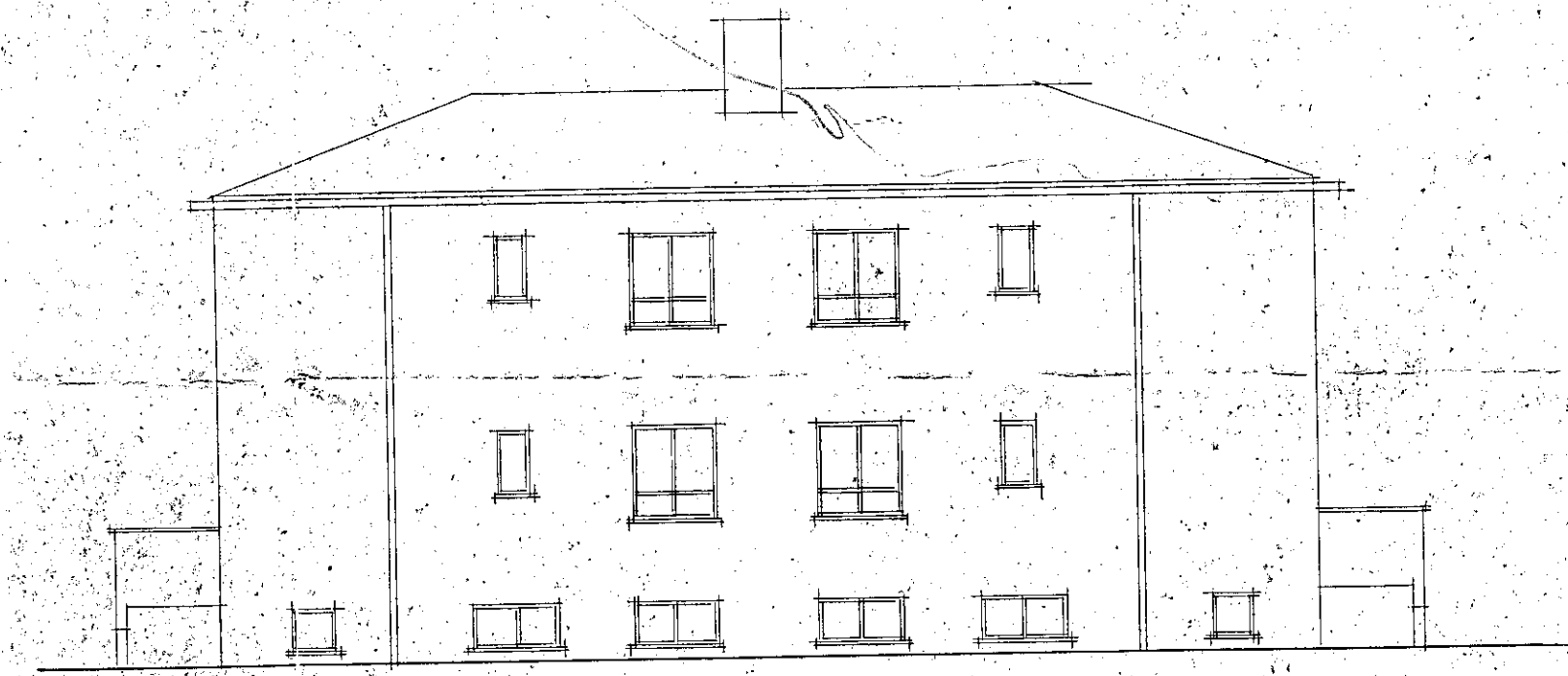
2. hæð



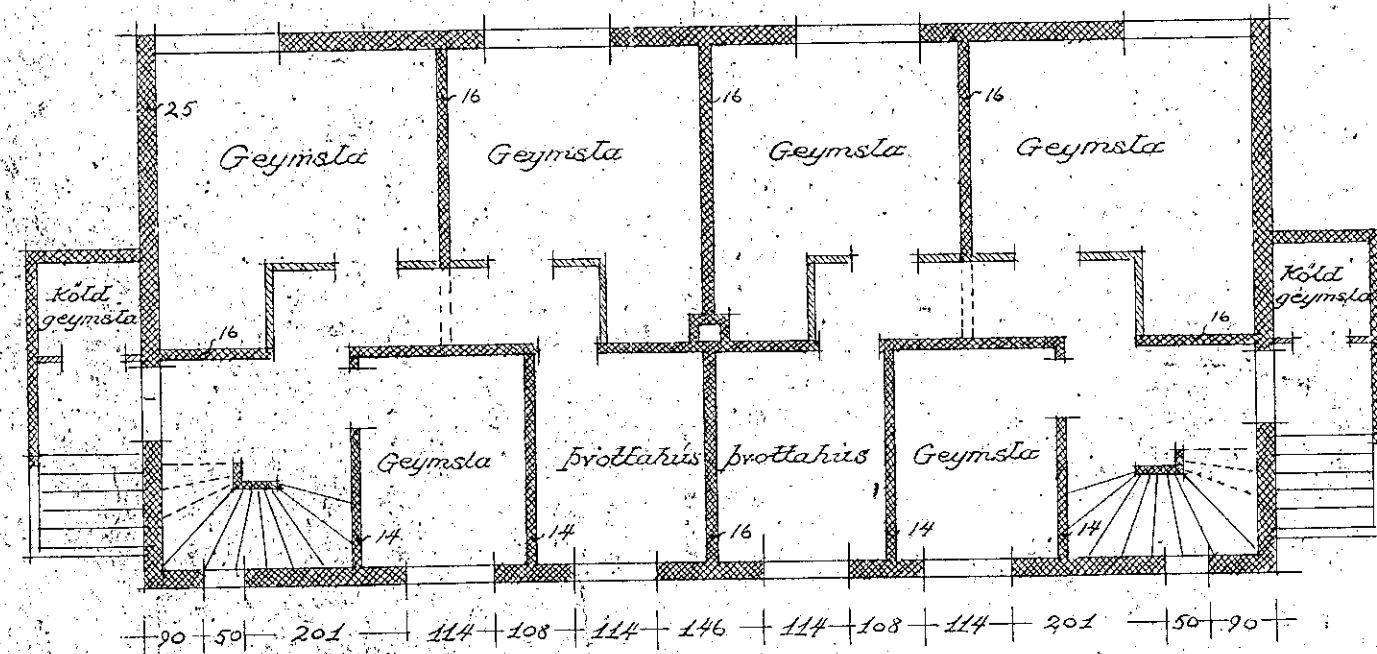
Suðurlit



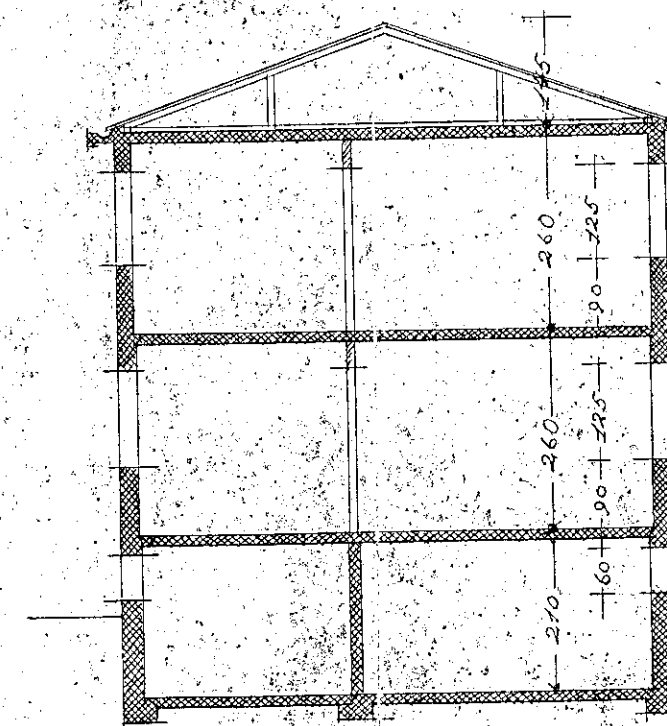
1. hæð



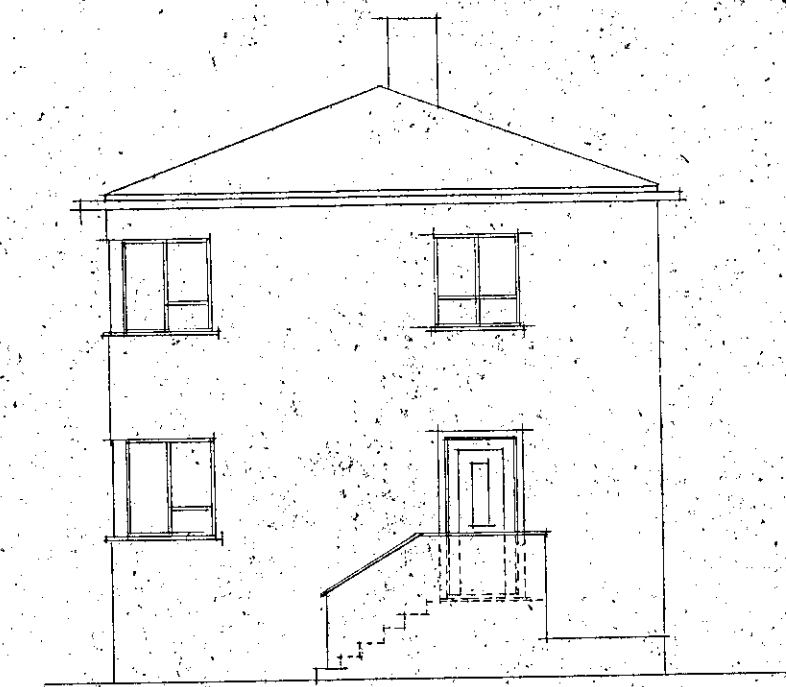
Norðurlit



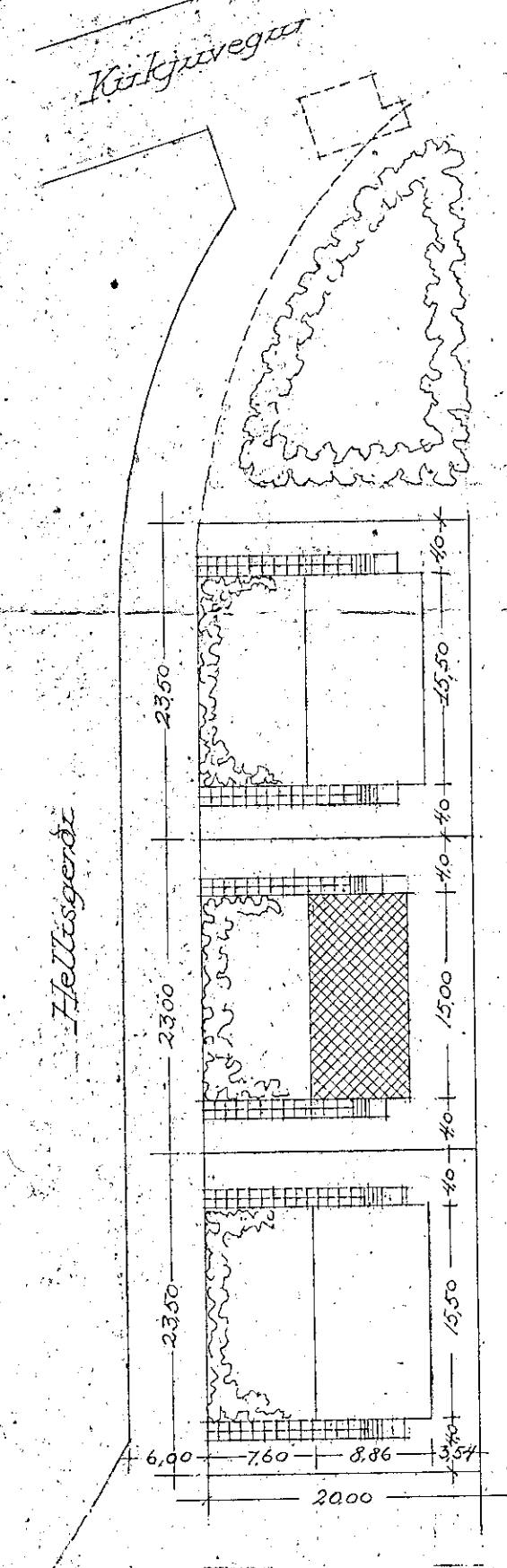
Kjallari



Íversktúr



Gaff



Afstöðunynd 1:500

Reykjavík í október 41
fr. húsnæðisráðgjafar
Pósthúsið