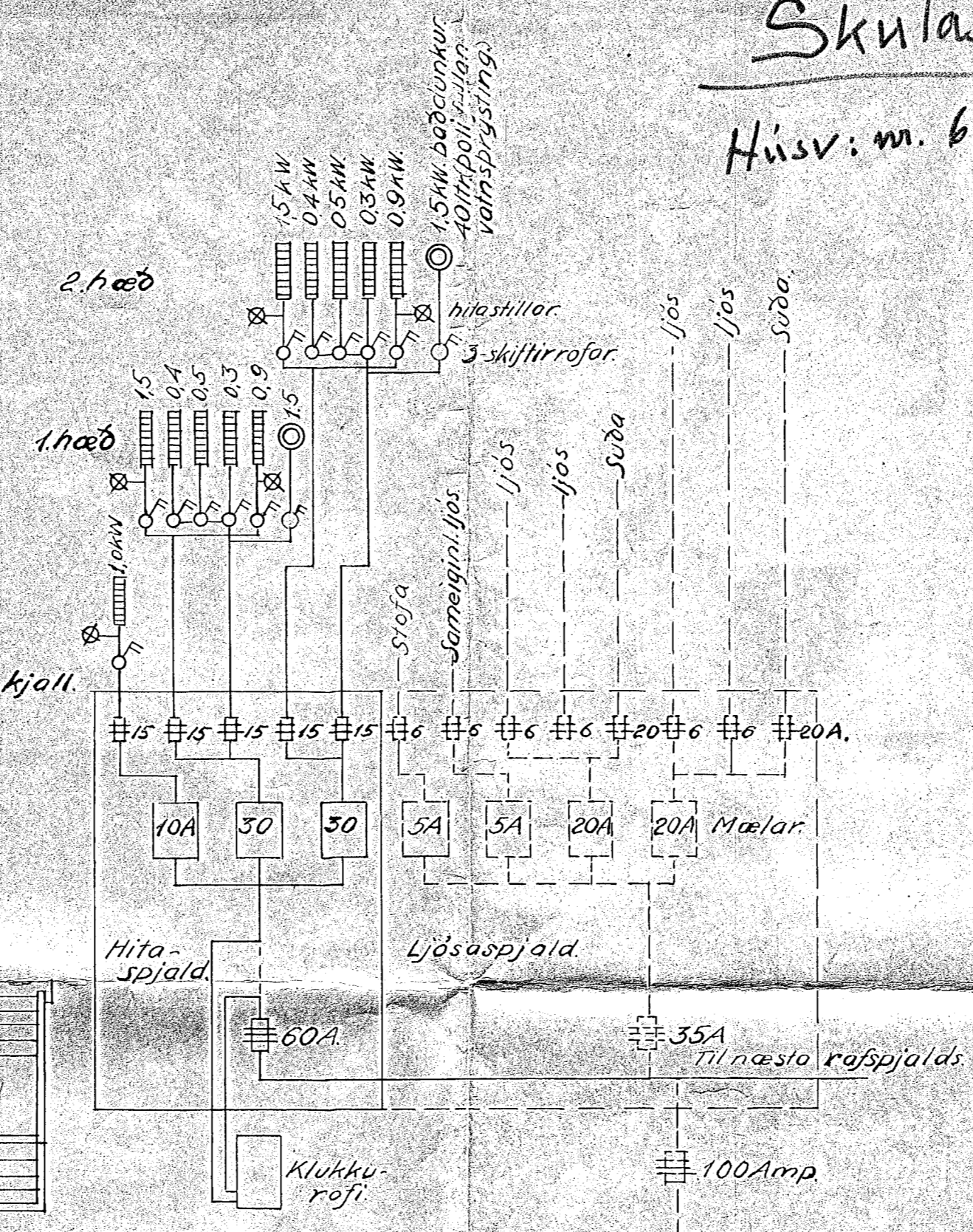
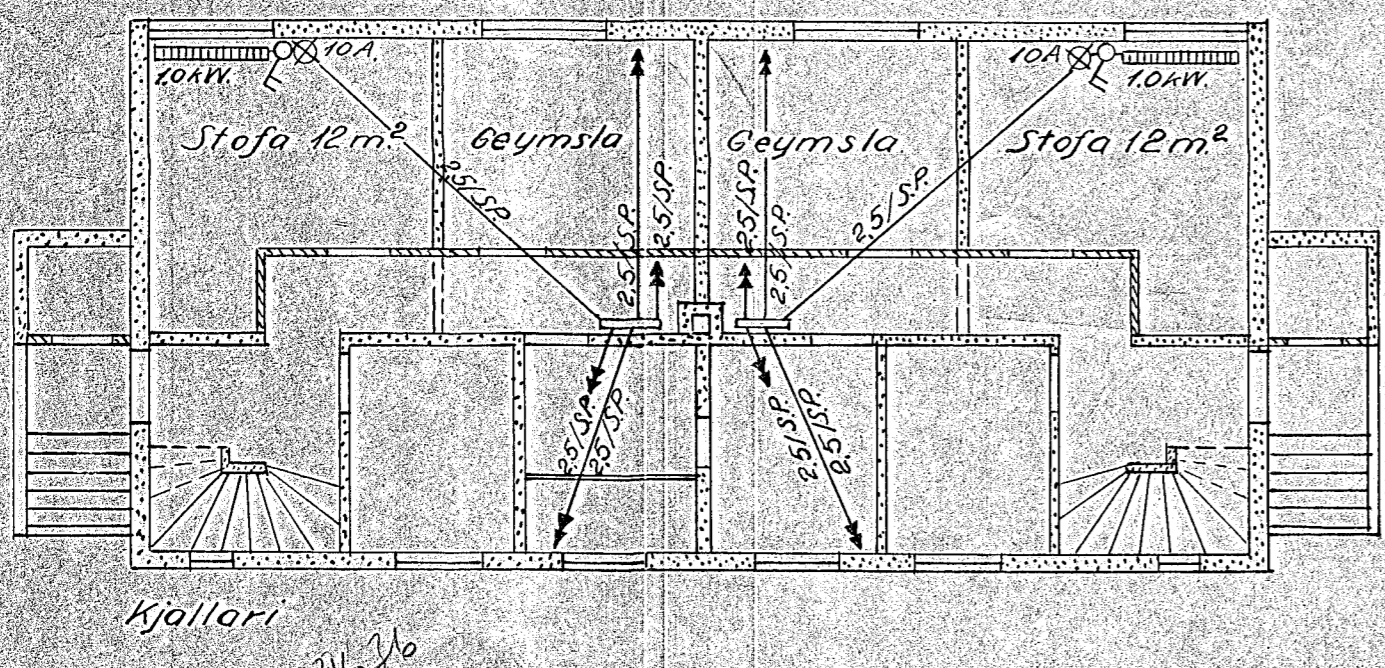
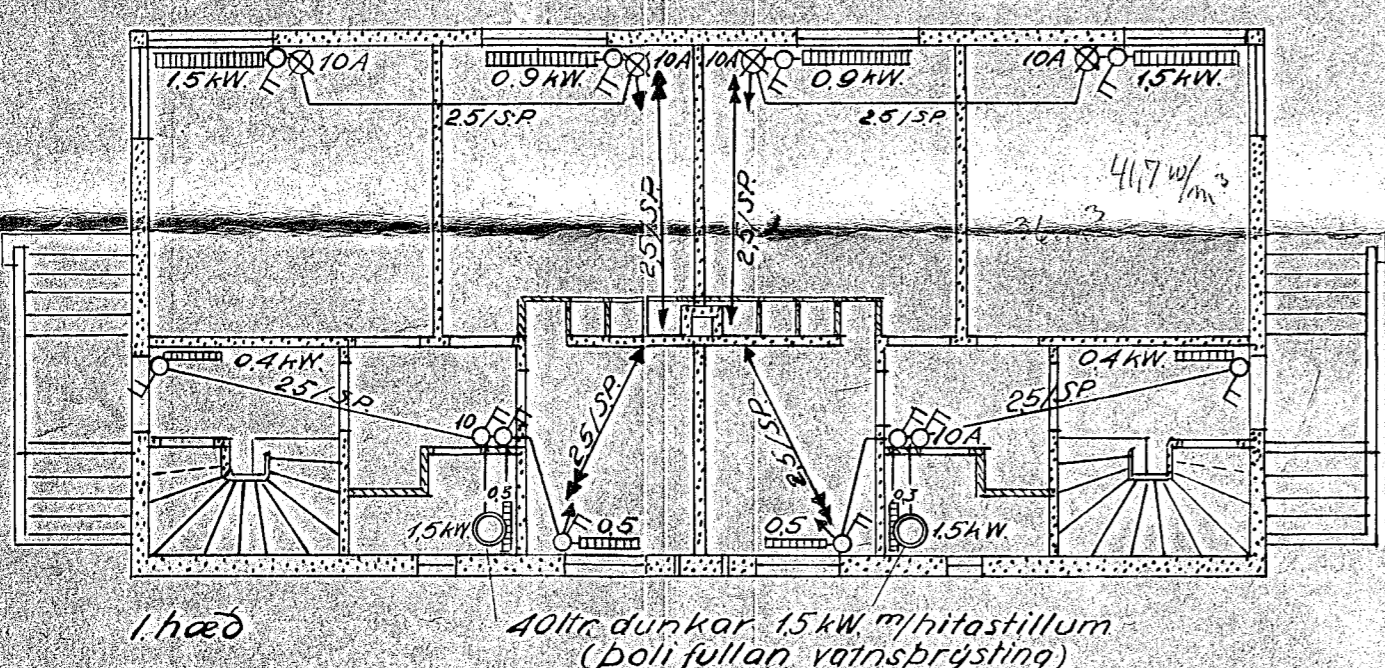
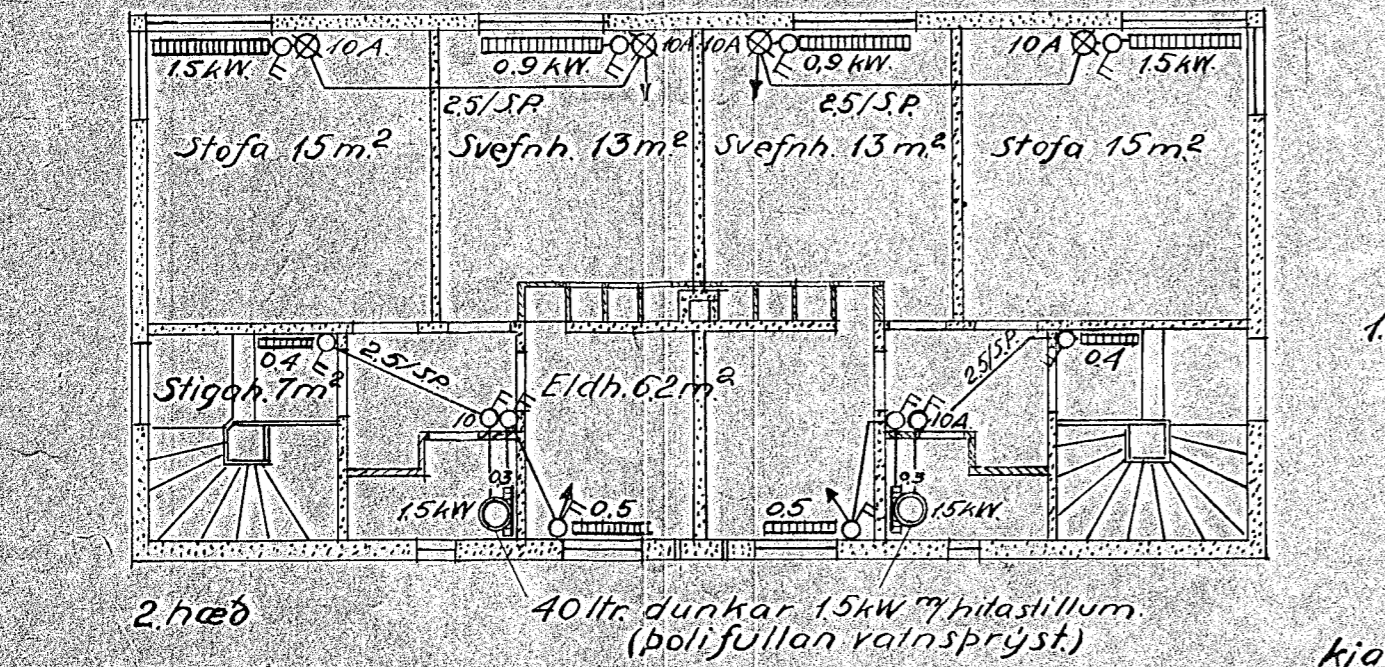


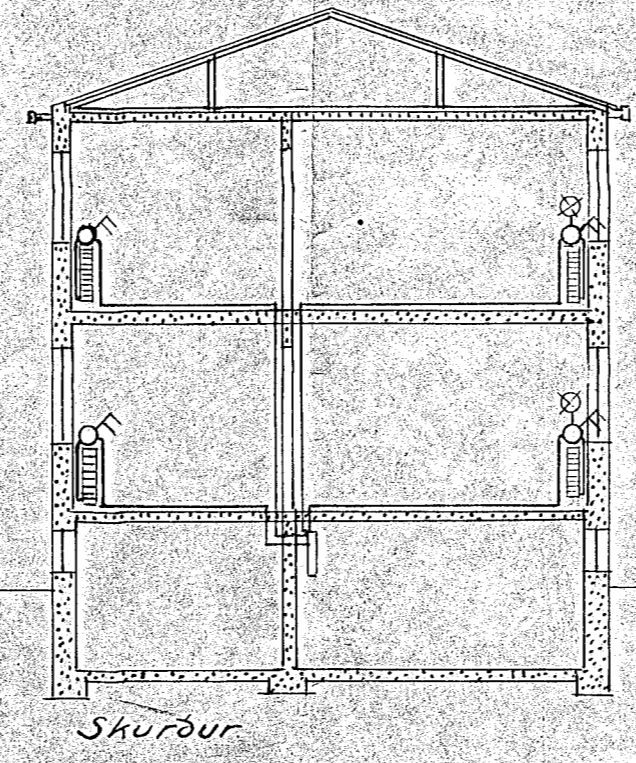
Verkomannabústaðir.  
Mælikvarði 1:100

# Skúlasteig 22-40

Húsv. n. 617, 723, og 749 m 754.



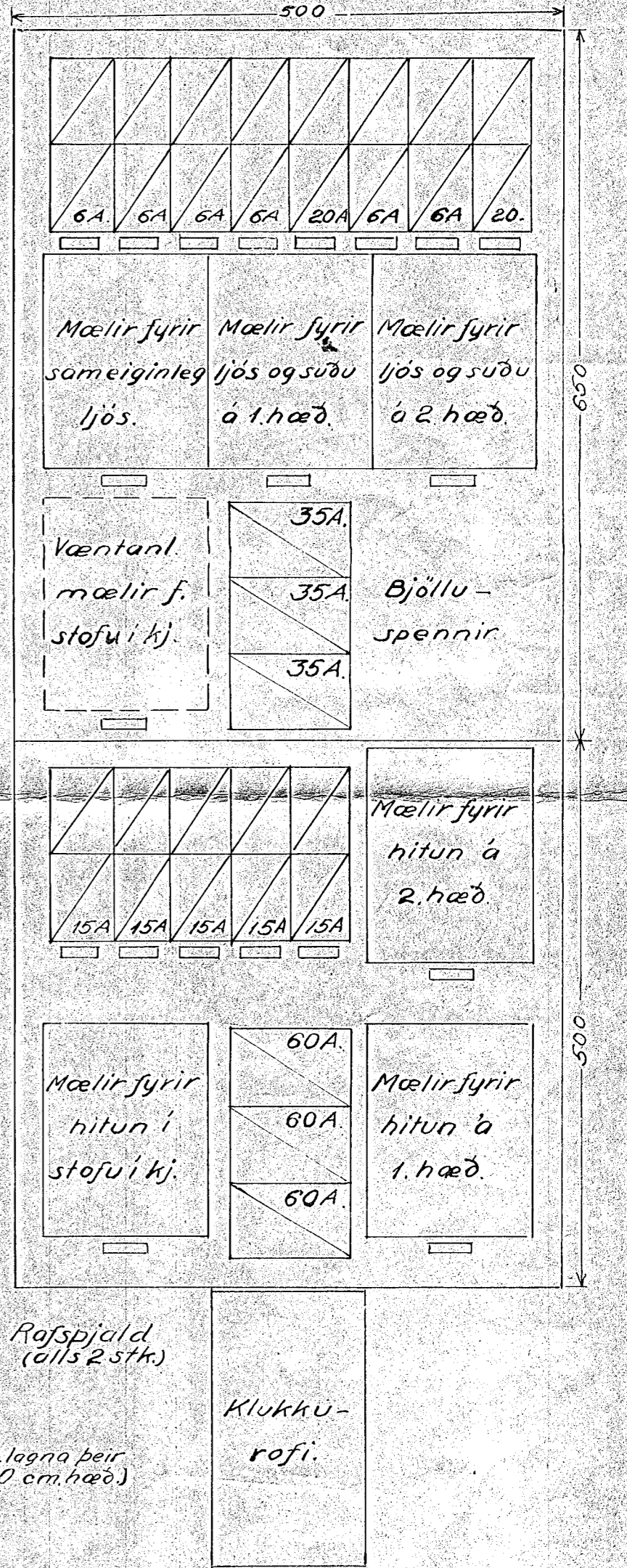
Tengimynd af rafspjaldi



Tafla yfir pilofna:

4 stk.	1,5 kW	stærð 1400 x 700 mm	2 stk. H. 2 stk. V.
2 "	1,0 "	1120 x 625	1 stk. H. 1 stk. V.
4 "	0,9 "	1260 x 500	2 stk. H. 2 stk. V.
4 "	0,5 "	700 x 500	2 stk. H. 2 stk. V.
4 "	0,4 "	-	2 stk. H. 2 stk. V.
4 "	0,3 "	-	2 stk. H. 2 stk. V.

Alls 22 ofnar samtals 16,4 kW.  
Ofnar skulu hvergi vera nær glugga og gólflistum en 25 cm.  
Hæð rofa frá gólfi 90 cm (nema rofar bádherb. laona þeir skulu vera í 190 cm hæð.)  
Hæð hitastilla frá gólfi 150 cm.



Reykjavík 4. 10. 1941  
Nikulás Friðriksson