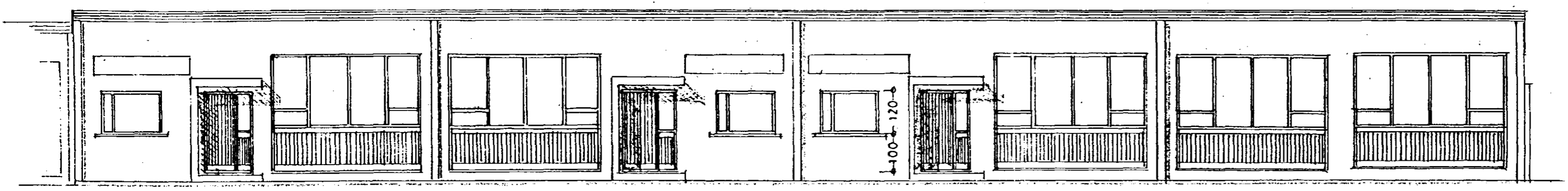
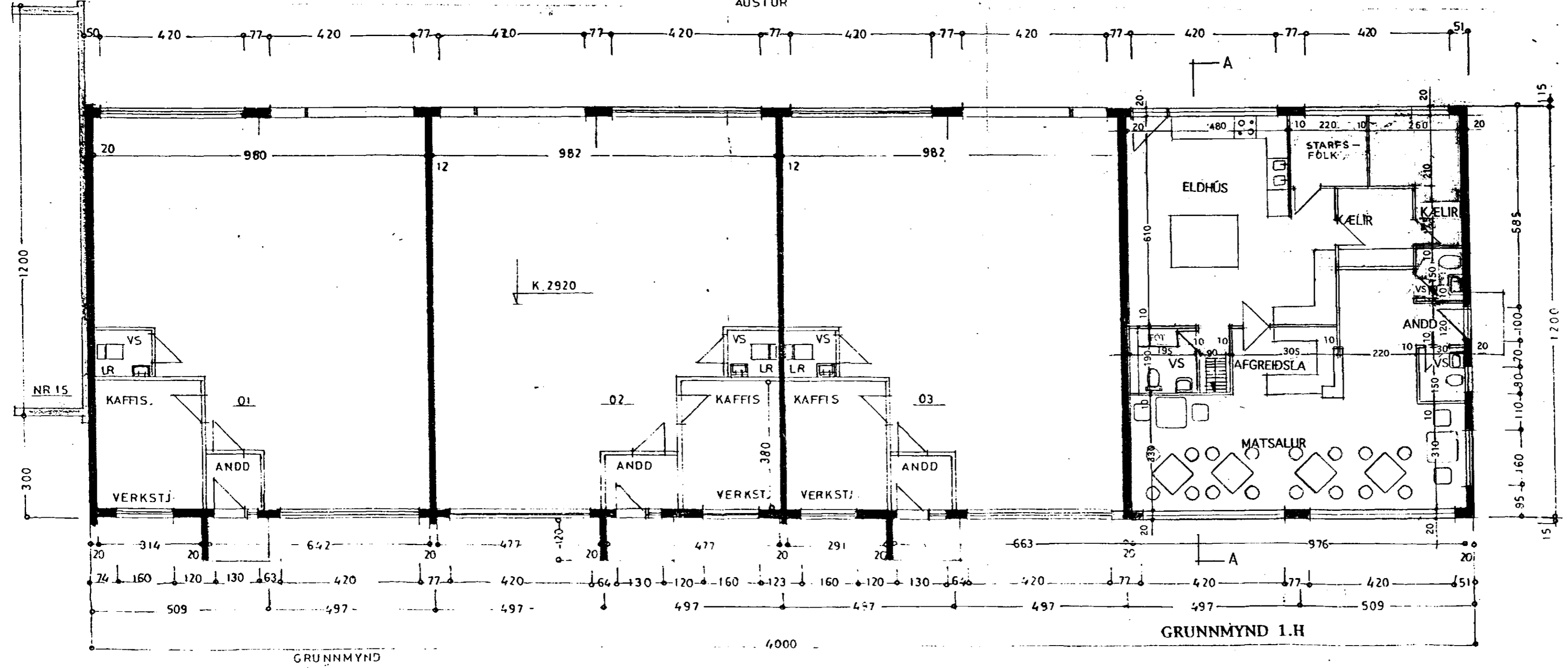


NR.17

VESTUR



AUSTUR



GRUNNMÝND 1.H

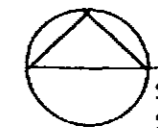
GRUNNMÝND

*Sigmundur Þórunnsson
Skútahraun 17B
Samuel S. Jónsson
Skútahraun 77A
Guðni Steingómsdóttir
Skútahraun 17C*

STÆRD HÚSS: 4800 m² 19680 m³

SKÚTAHRAUN NR 13-15-17

SKÚTAHRAUN NR 17


 Páll Björgvinsson arkitekt
 Sólvalldagötu 35, 101 Reykjavík.
 Sími: 562 9410 Fax 562 9410.
 BR. 28.10.1996
 M. 1:100
 DAGS. 08.08.1996