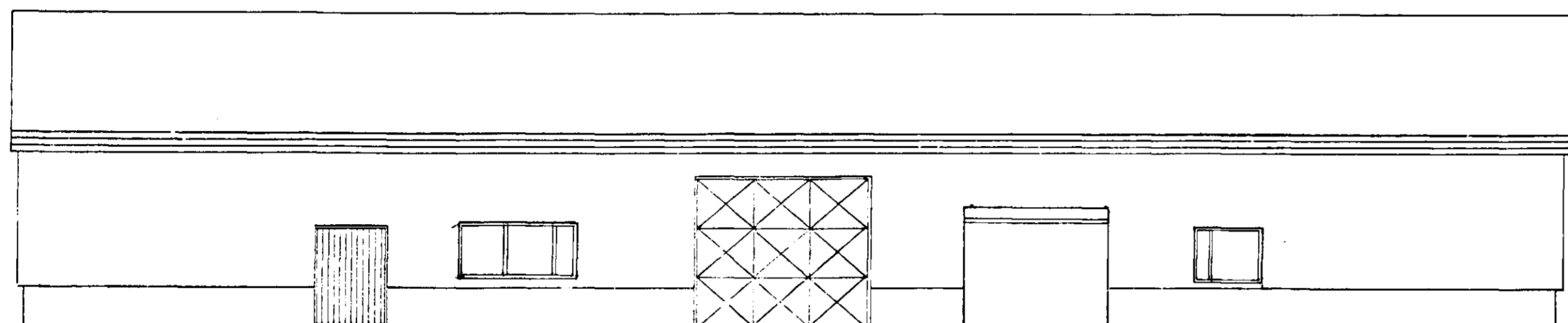
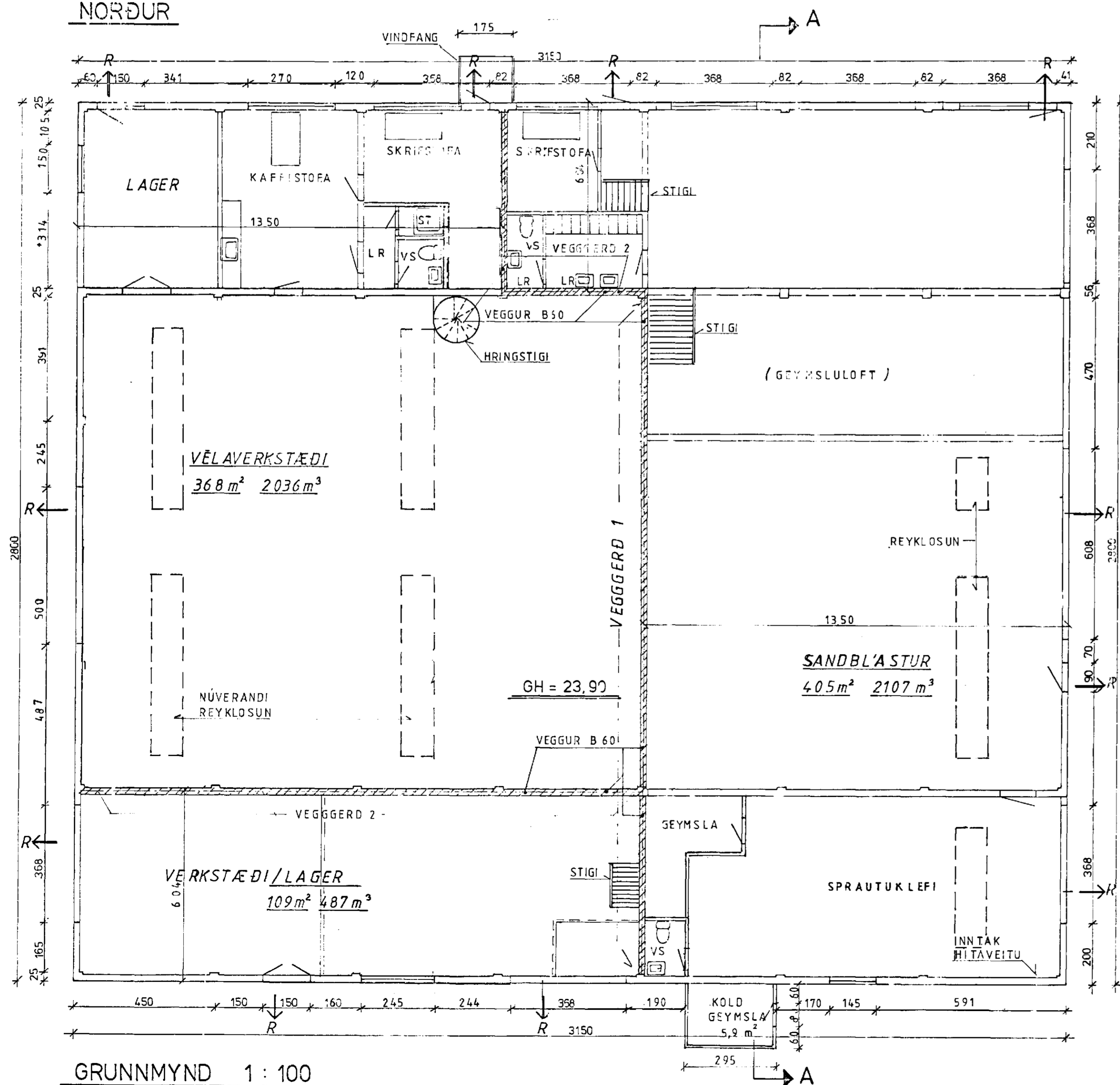


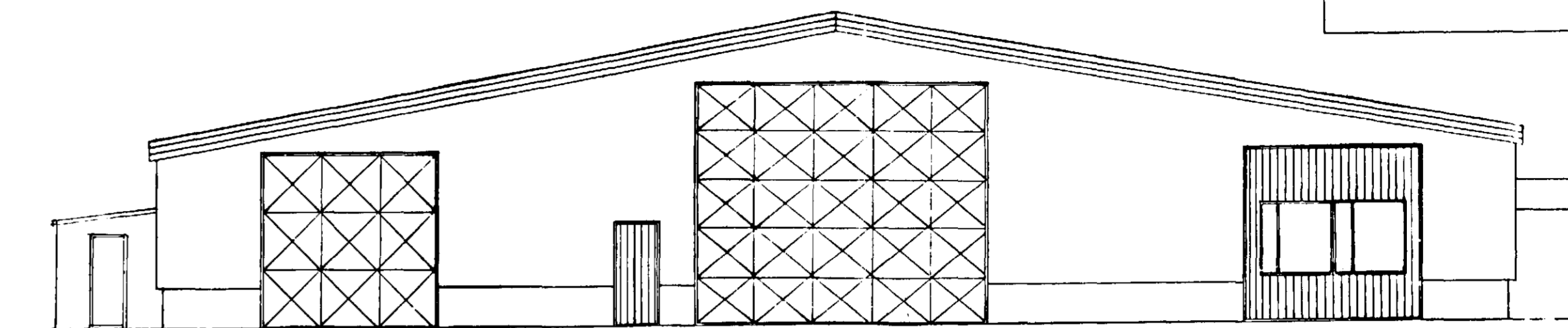
SUDUR



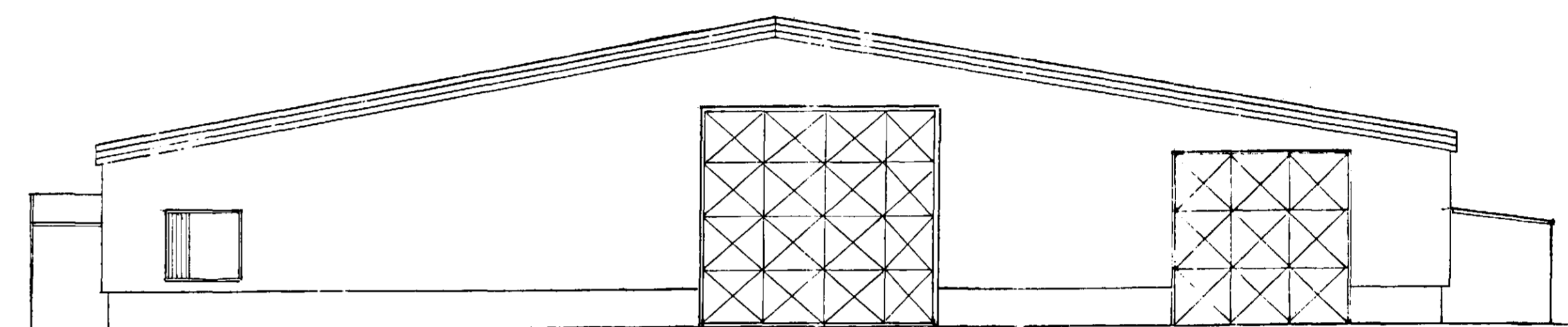
NORÐUR



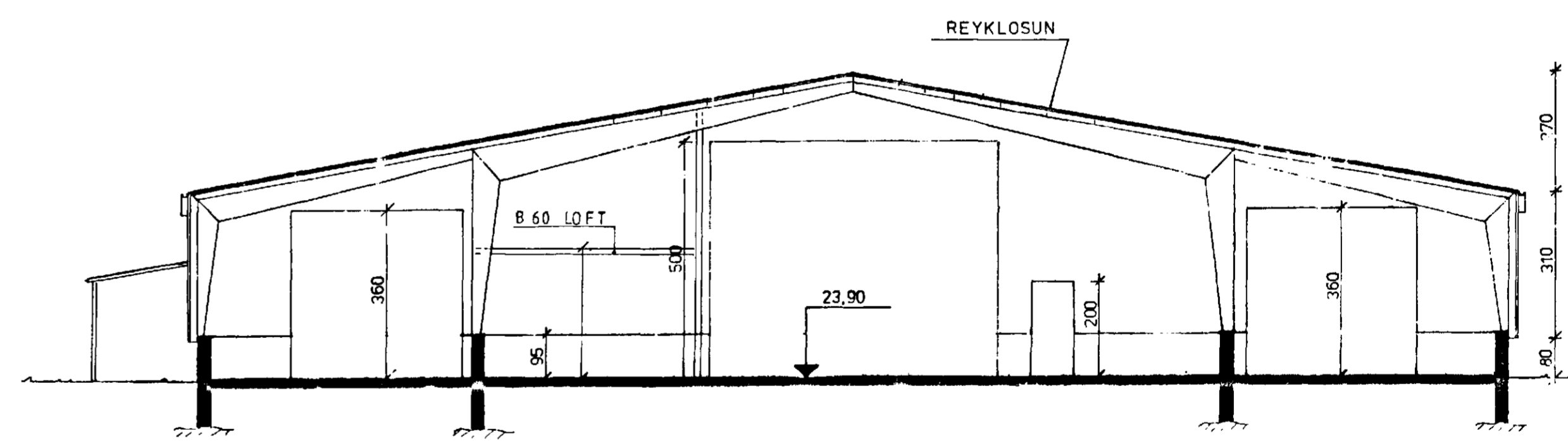
GRUNNMYND 1:100



VESTUR



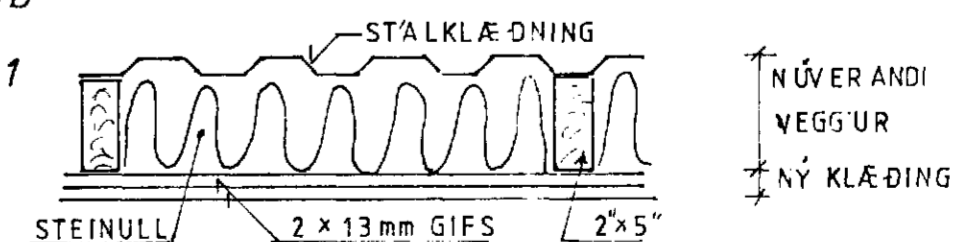
AUSTUR



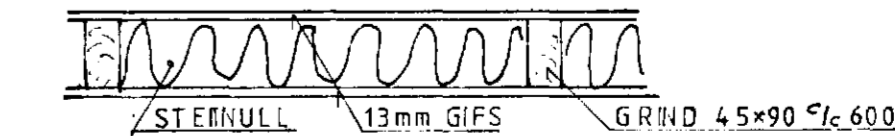
SNID A - A 1:100

SKÝRINGAR: HÚSINU SKIPTI ÞRÍJA HLUTA. HVER HLUTI EITT BRUNAHÖLF  
→ R RÝMINGALEID

B 60 VEGGIR: GERD 1  
(ELDRI VEGGUR)



B 60 VEGGIR GERD 2  
(NÝ VEGGUR)



BRUNAVEGGIR NAI UPP AD ÞAKJÁRNI.  
STÁLGRIND MÁLUD MED ELDVARNARMÁLNINGU.  
ÞAK ER EINANGRAD MED 6"STEINULL M. ALPAPPÍR

Brunamálastofnun ríkisins  
SAMÞYKKT

3. DES. 1996

Alri Arnason

Ph. HEILBRIGDISEFTIRLIS  
HAFNARFJARDARSVÆDIS  
Heilbrigðisráðgjafi Sólvangi  
Pósthóli 440 - 222 Hafnarfjörður  
Sími 565 2600

Kafl Stefánsson

SKÚTAHRAUN 2A HAFNARFIRÐI	Mælikv. 1:100	Verk 8416	Talkn. nr. 1.0
VERKSTÆÐI SANDBLASTUR	Hannað af Teiknað af	Yfirarið: Samb: g	Dags. SEPT. '84
VERKFRÆÐIÞJÓNUSTA JÓHANNIS G. BERGÞÓRSSONAR h/f. VERKFR. MVF. Hafnarfirði - Símar 53315 OG 50241			

BREYTT MARS '96  
HÚSI SKIPTI ÞRÉNNT  
Breytt JAN '88  
Breytt NOV '87  
Breytt JAN '85