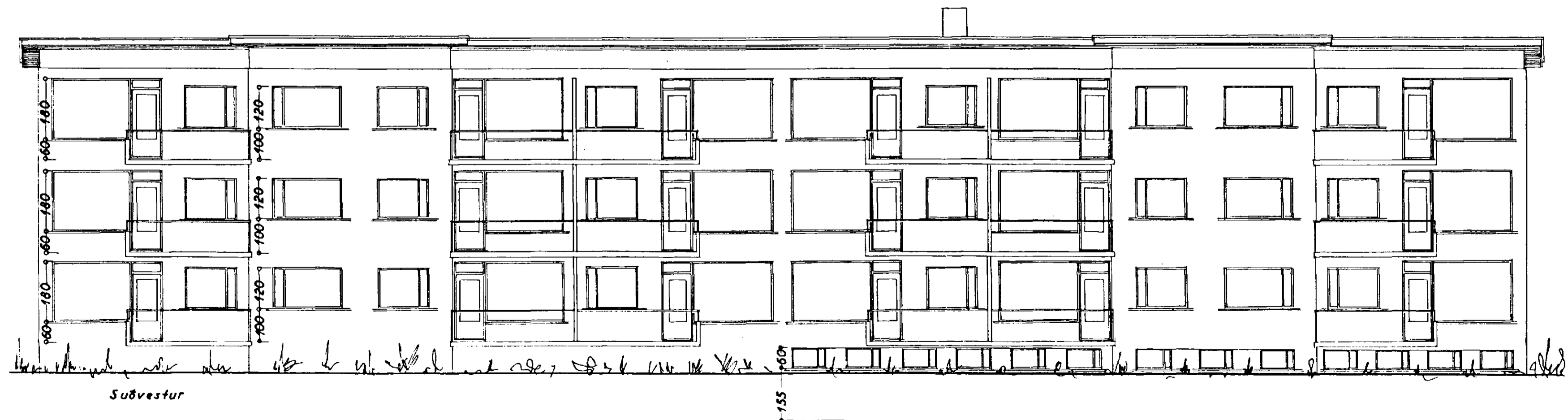
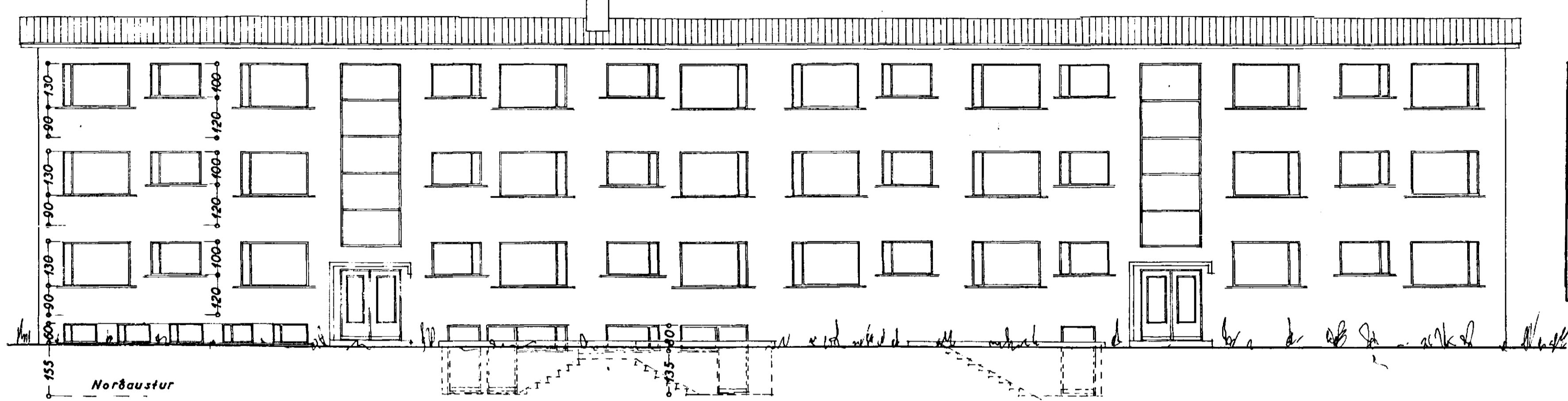
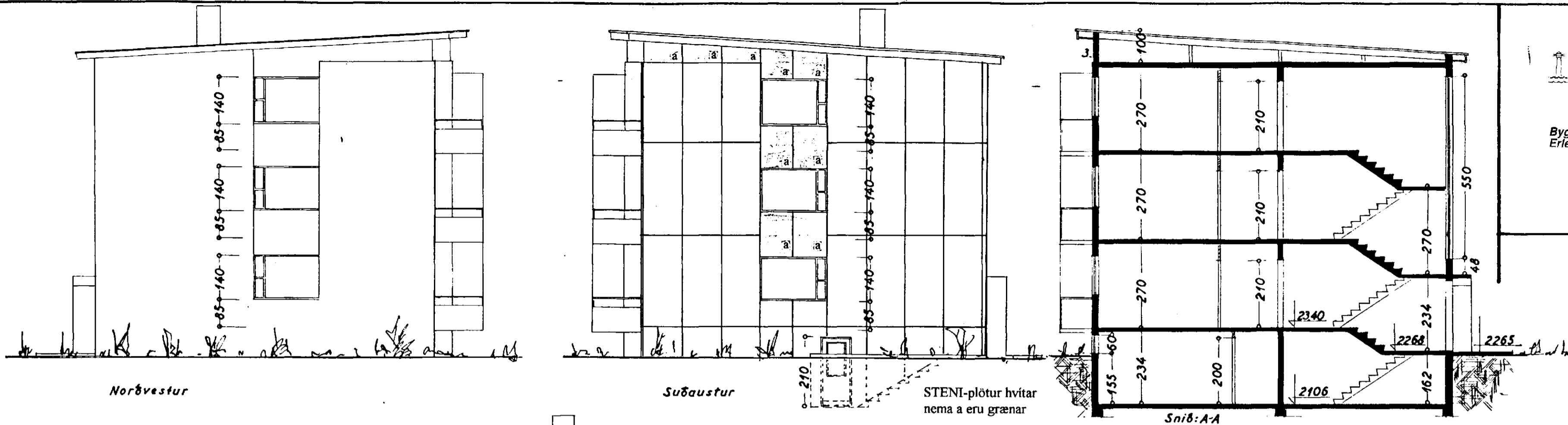


Samþykkt þann
 16 NOV. 1998
 Byggingarútlitruinn í Hafnarfirði
 Erlendur Hjálmarsson



SLÉTTAHRÁUN NR. 19 - 21
 Hafnarfirði

Suðausturgafi hússins klæddur
 STENI-plötum.

Grunnmynd 1:5 Útlit 1:100

Hafnarfirði, 6. nóvember 1998
 F.S.
 Friðbjófur Sigurðsson, kt. 200724-2249

STERÐ HÚSS:
 465,9 m² 4.633,0 m³

SLÉTTAHRÁUN NR. 19-21

BLAD 2

Útlit } 1:100
 Snið }

Hafnarfirði 2. ágúst 1965
 G. Óskarsson / F. Sigurðsson.