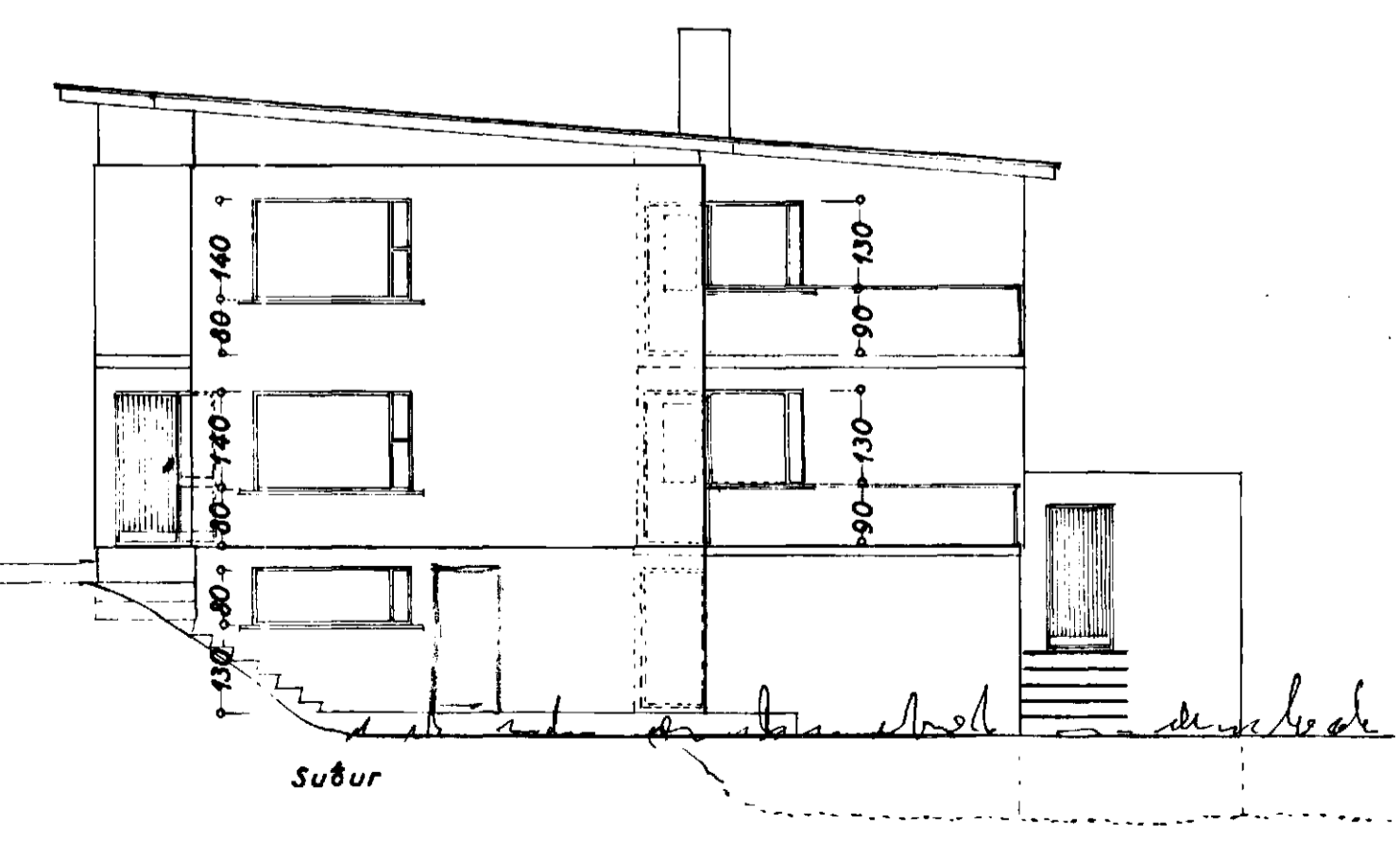
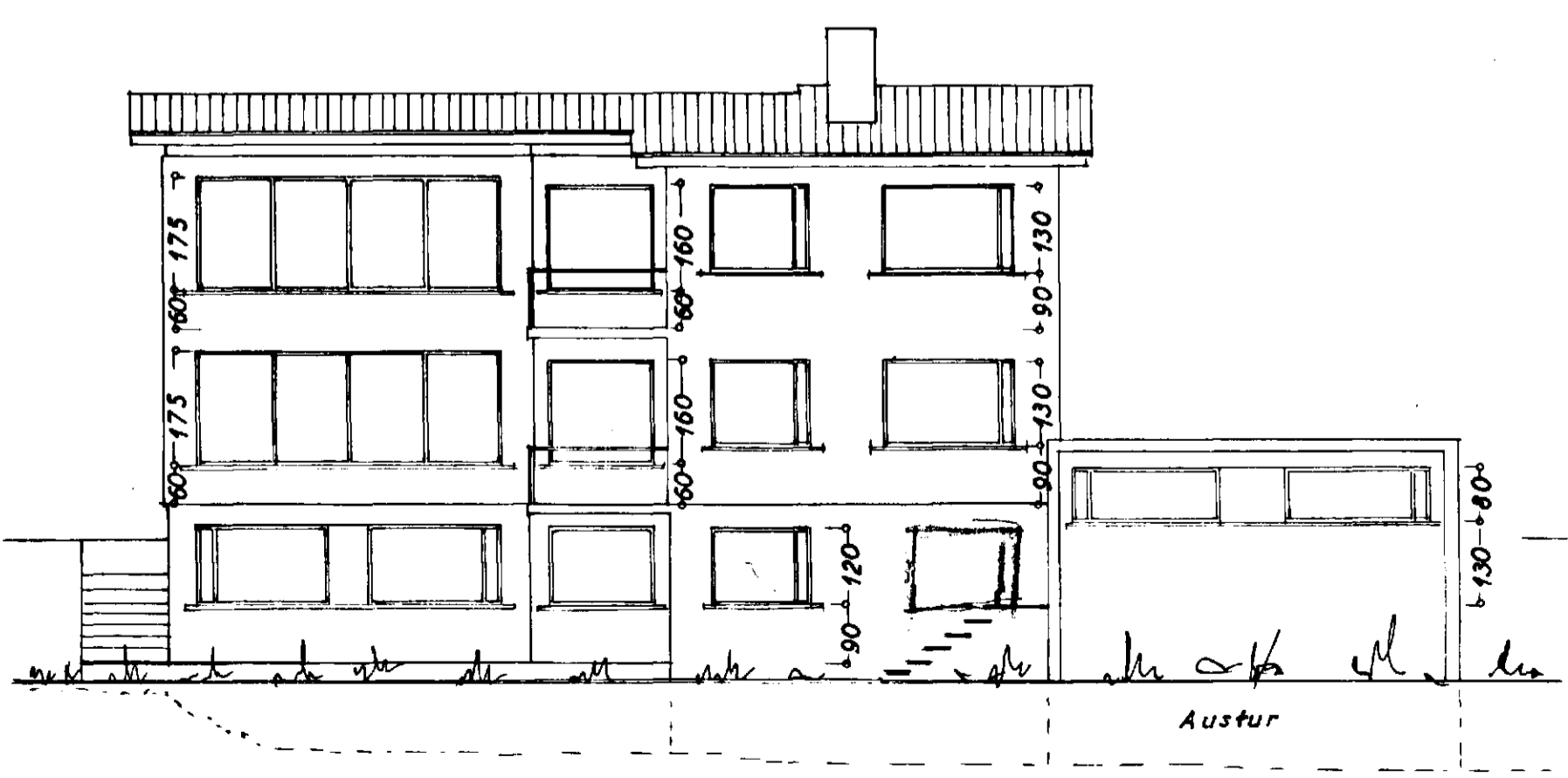
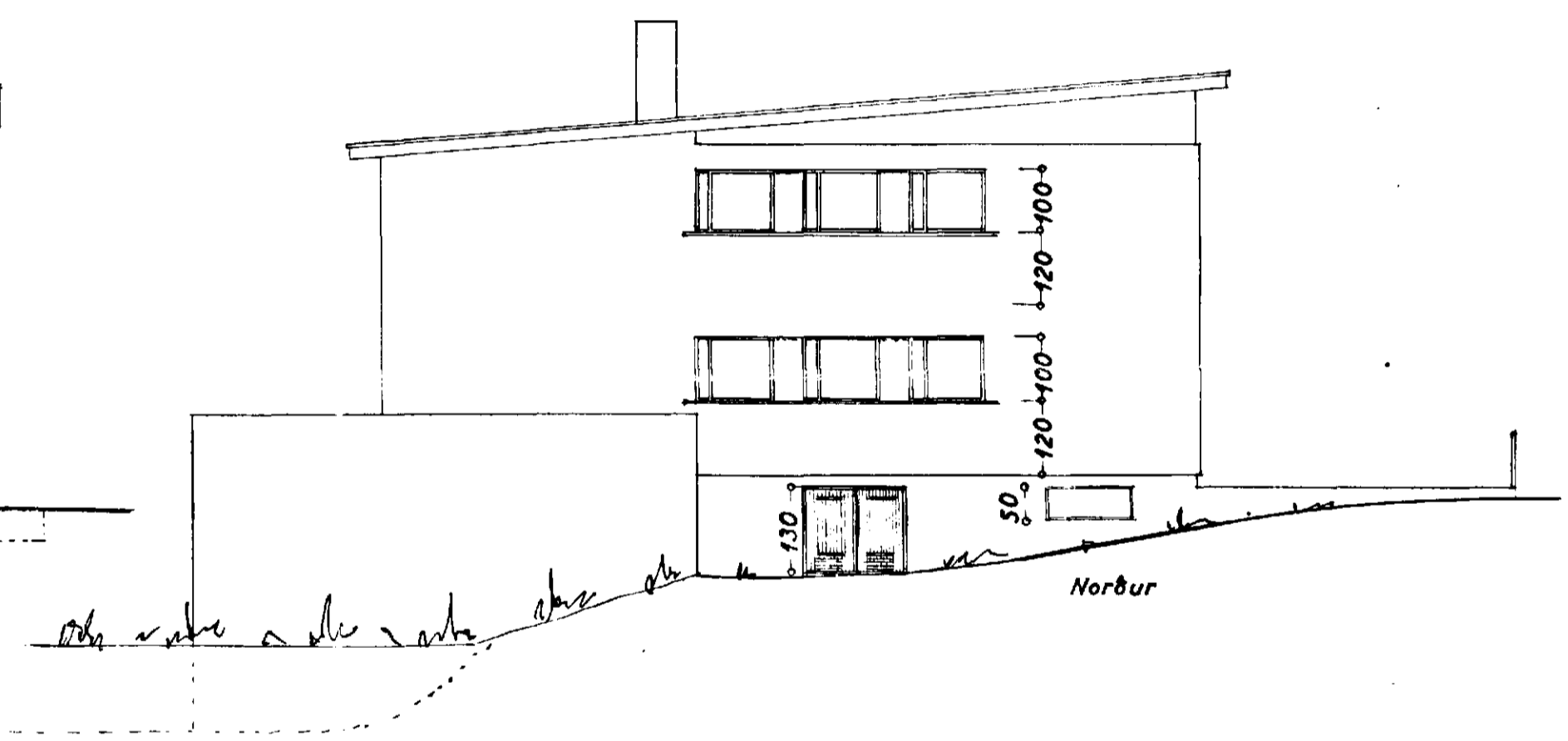
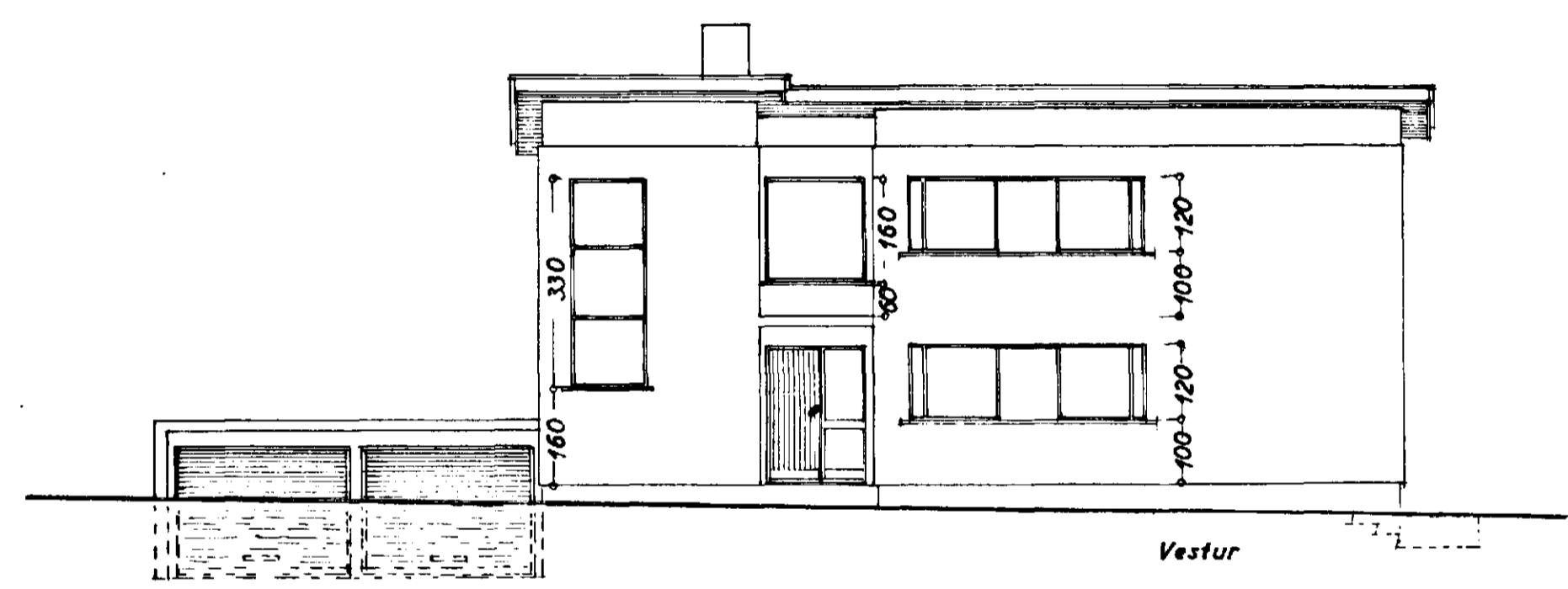
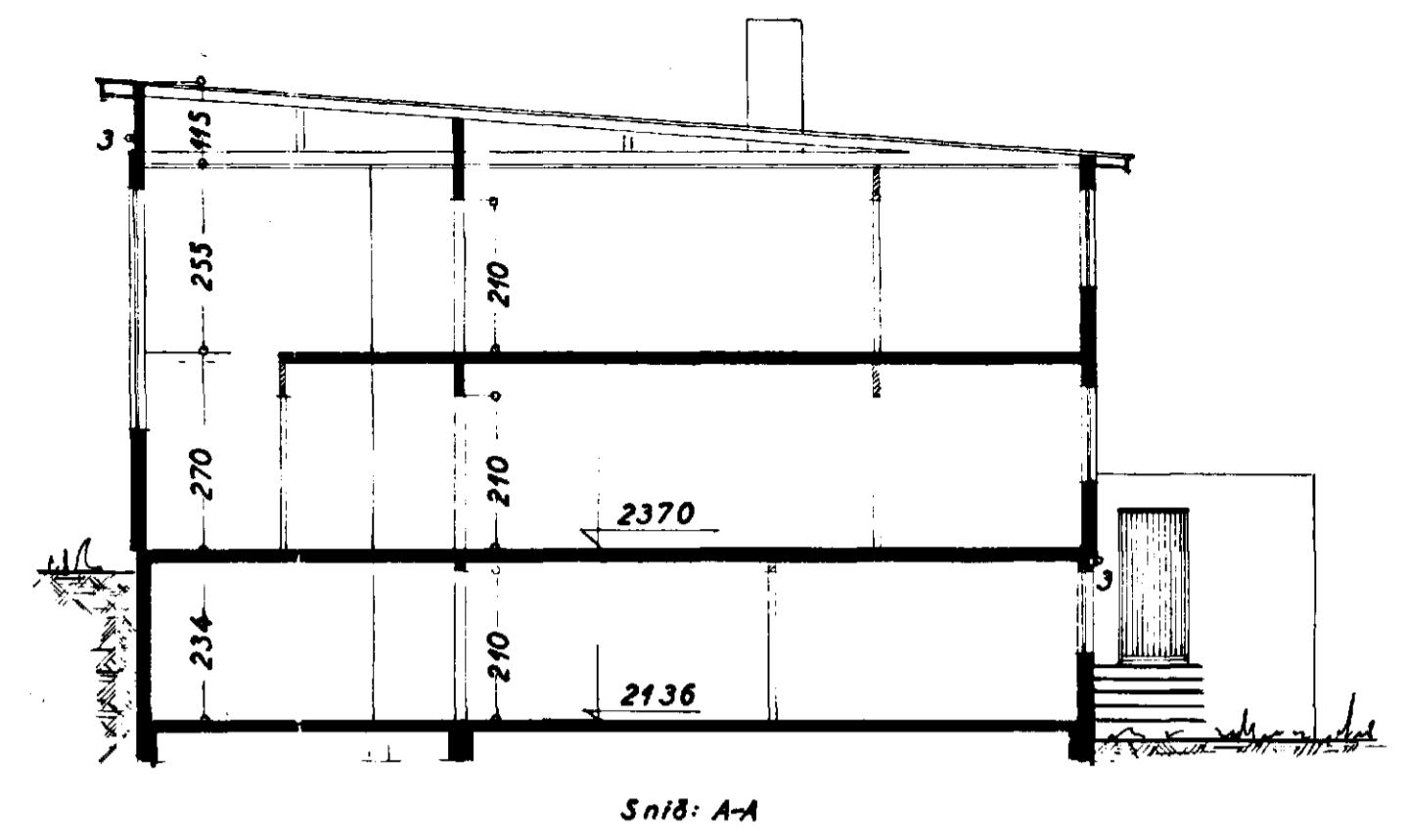
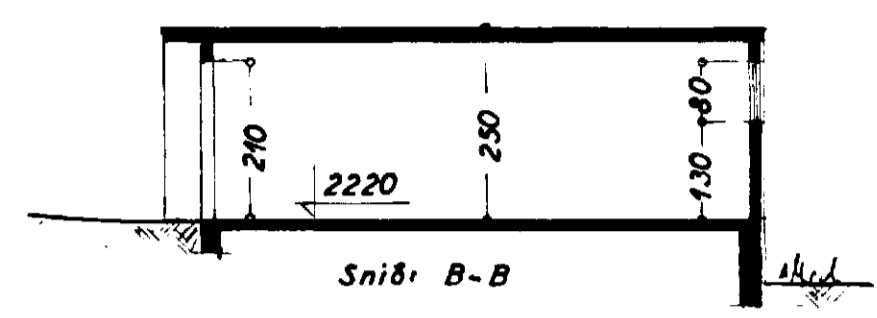


dröfyrir á fundi bygginga-
 nefndar þ. 22. 12. 1965
 BYGGINGARFRUMMUN
 Í HAUFNARFIRÐI
E. Sigurdsson



Stærð húss 126,7 m² 9300 m³
 bílg. 45,6 m² 1140 m³
 Samtals 1.044,0 m³
 60 · 26 · 25 = 650 m³

SLÉTTAHRUN NR 20
 BLAÐ 1

Dröfyrir } 1:100
 Snið }

Stafmálfríði í ágúst 1965
 E. Sigurdsson