

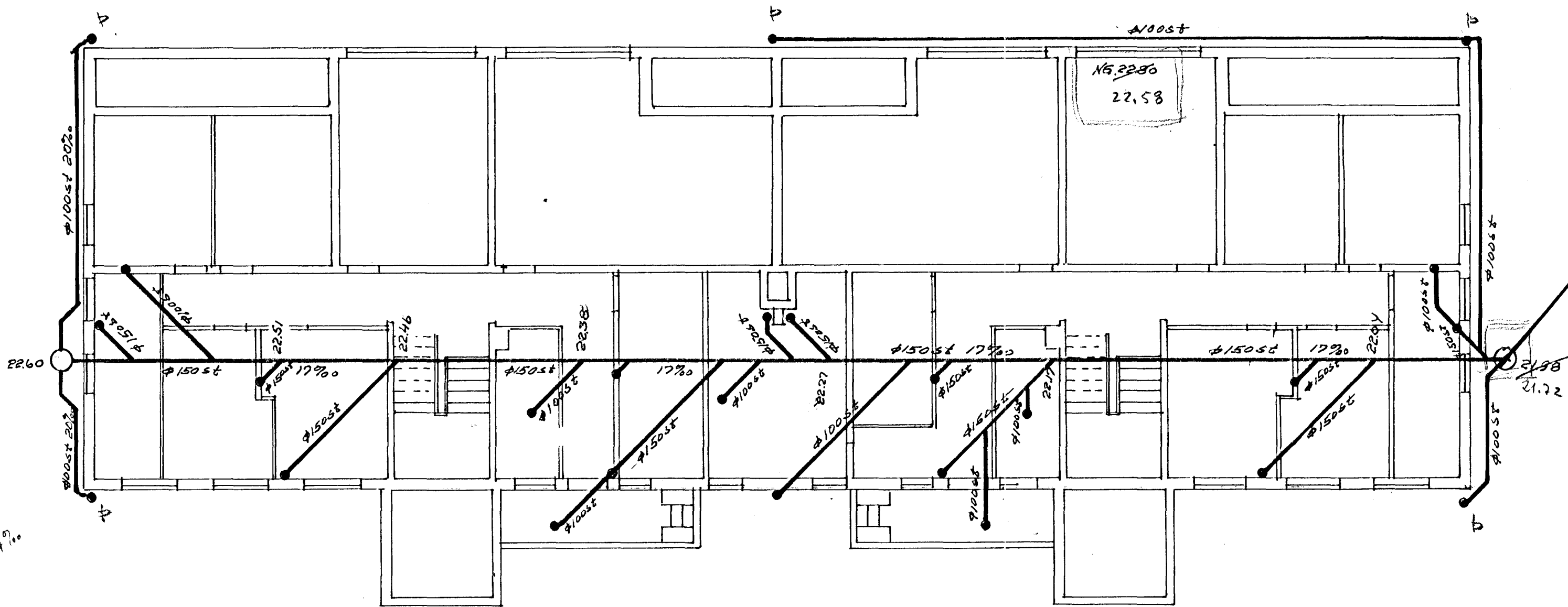
$F \approx 100 \text{ m}^2$

$\tau = 100 \text{ g/h}$
 $Q = 0.04 \cdot 100 = 4 \text{ l/h}$

$\frac{25.85}{2.52} = 25.16$

$\frac{85.22}{2.52} = 24.9$

$\frac{21.7}{2.52} = 21.54$



$\frac{0.62}{36.50} = 0.017 = 1.7\%$

Sléttahraun 28-30	M-1:100	Teikn. 279-86
Holresi	16-17.1	Guðmundur Þorgeirsson