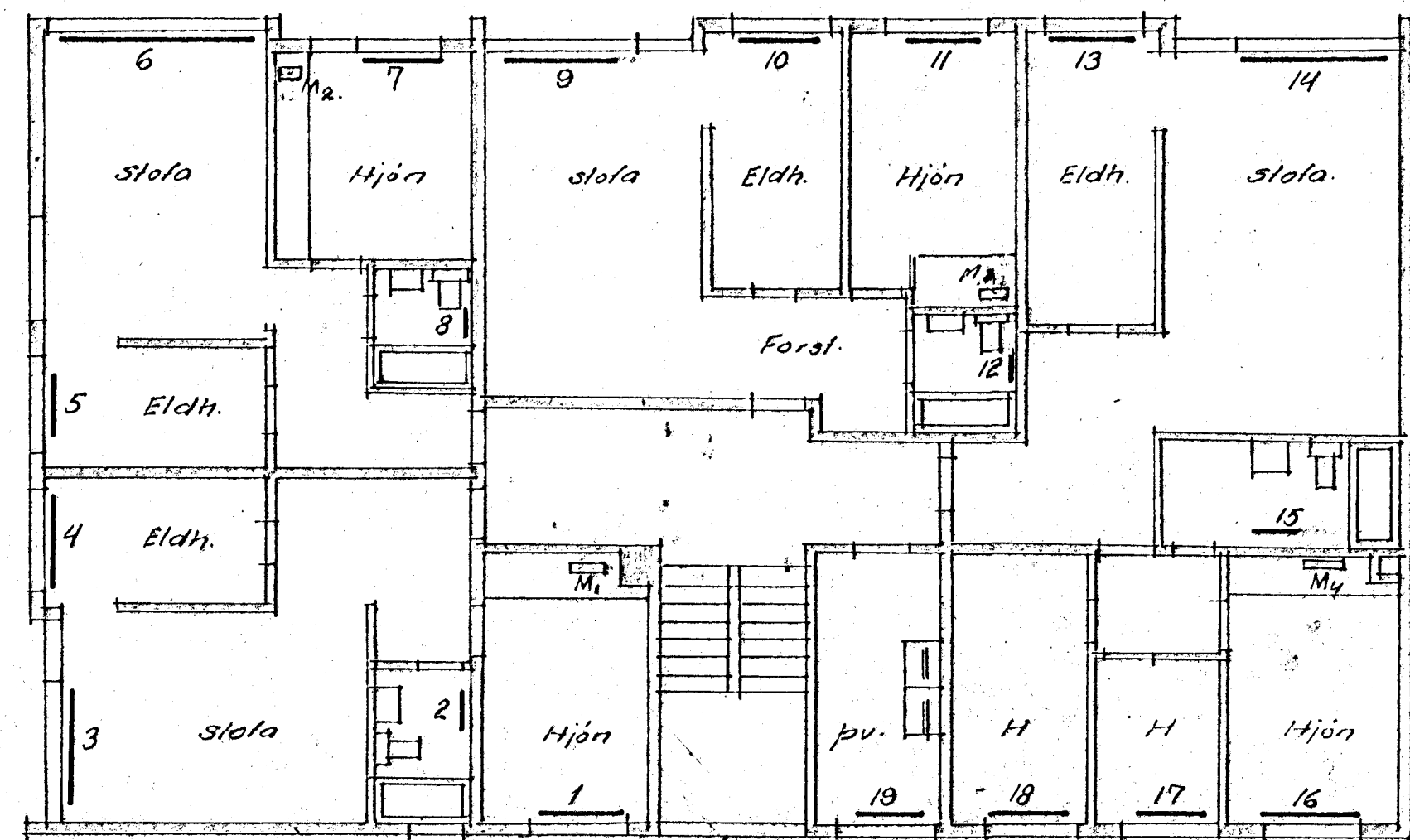
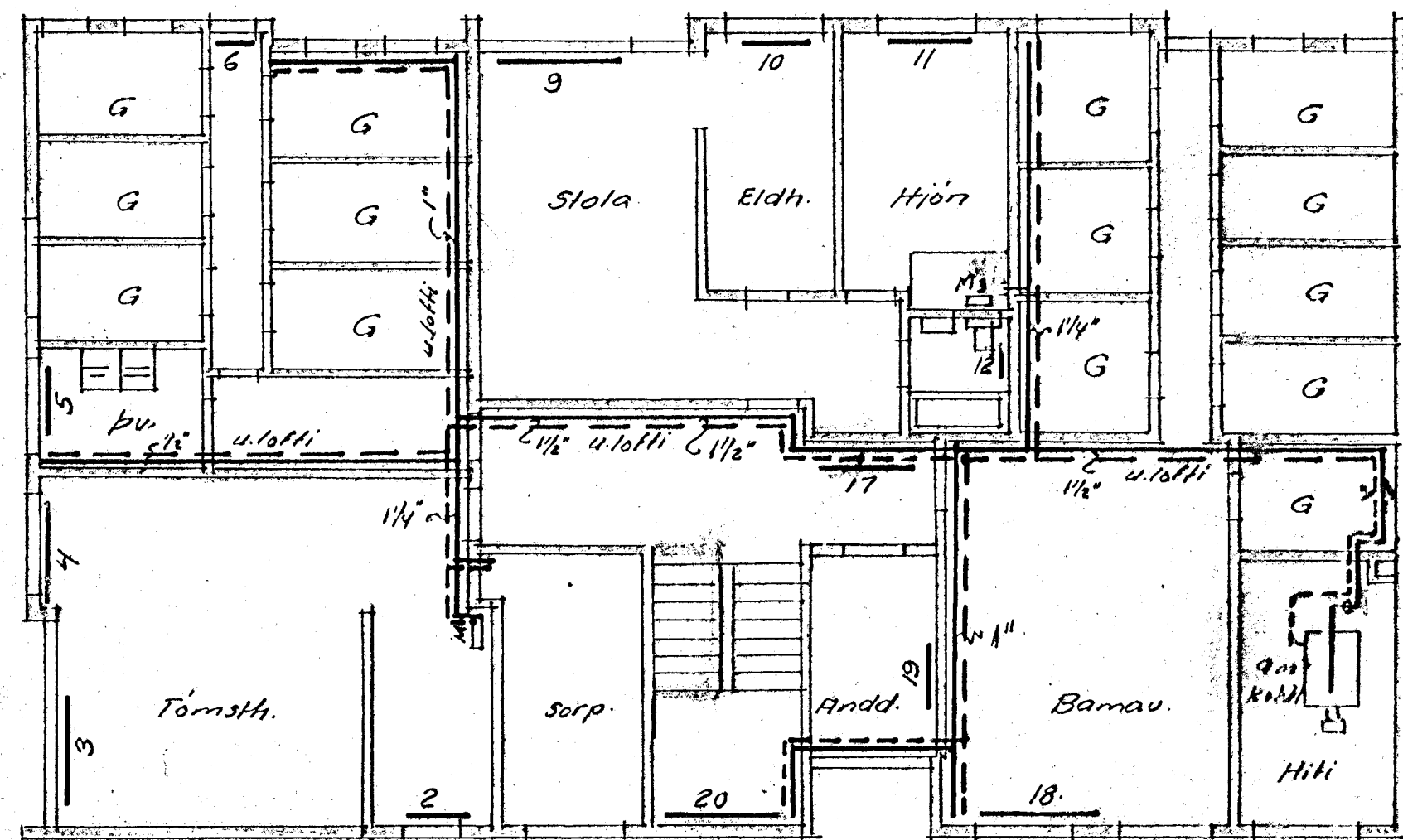


Helluofnar.

Nr.	jardhaed			1. Haed			2. Haed			3. Haed		
	Haed	Langd	Teng	Haed	Langd	Teng	Haed	Langd	Teng	Haed	Langd	Teng
1				500	890		500	630		500	740	
2	600	680		500	320		500	320		500	320	
3	500	2000	V-H	500	1790	V-H	500	1680	V-H	500	1790	V-H
4	500	740		500	630		500	580		500	630	
5	500	740		500	630		500	580		500	630	
6	600	680		500	2200	H-V	500	1680	H-V	500	1890	H-V
7				500	1100	V-H	500	840		500	950	
8				500	320		500	320		500	320	
9	500	2100	H-V	500	1260	H-V	500	1260	H-V	500	1470	H-V
10	500	890		500	630		500	630		500	680	
11	500	1100	H-V	500	680		500	680		500	740	
12				500	320		500	320		500	320	
13				500	790		500	630		500	890	
14				500	2100	H-V	500	1420	H-V	500	1680	H-V
15				500	320		500	320		500	320	
16				500	840		500	740		500	950	
17	600	1470	H-V	500	580		500	530		500	580	
18	600	2000	H-V	500	680		500	630		500	680	
19	600	890		500	630		500	630		500	630	
20	600	1890	V-H									



Benedikt B. Sigurðsson veftr.		
Stettahraun nr. 29		
M.	1:100	Hitalögur
D.	júl '68	Ofnastadsetning Ofnabrá
Nr.	1. 61	Bun. B. Sigurðsson

Munir að stilla kertid
þannig að allir ofnar hitni
jafnt.