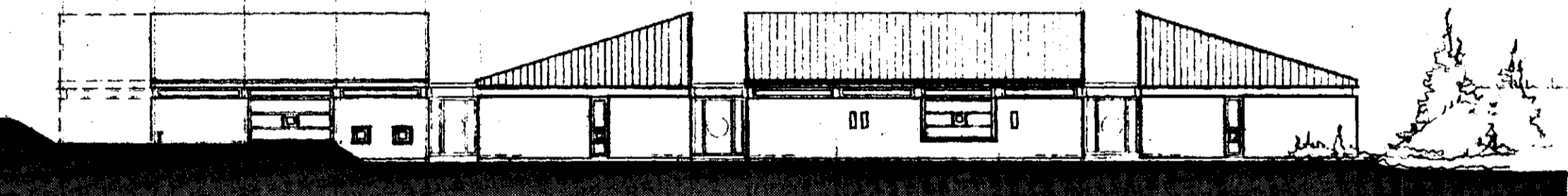
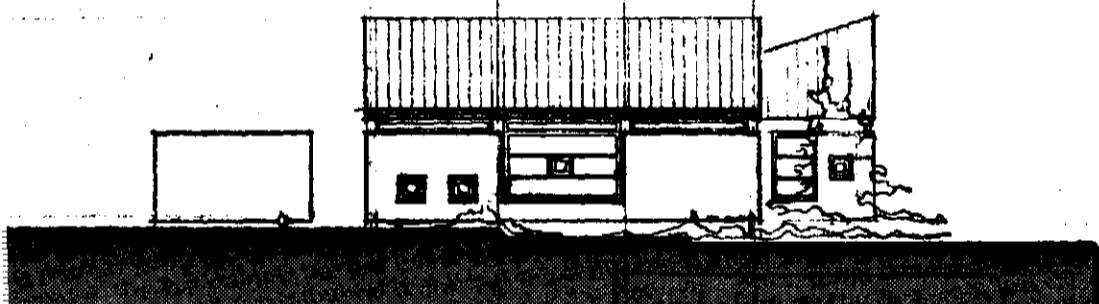


NORDUR

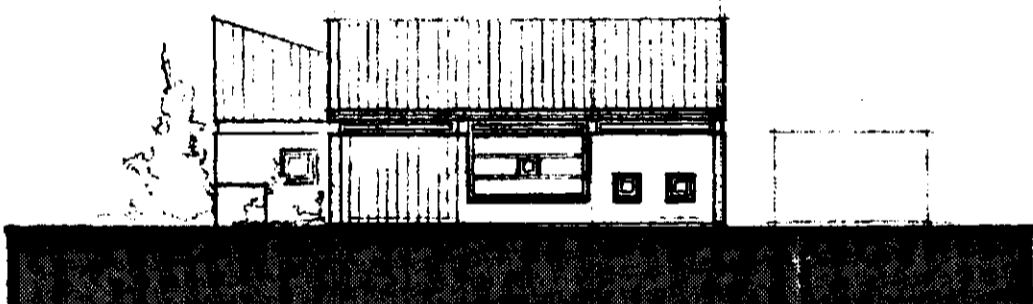


SUDUR

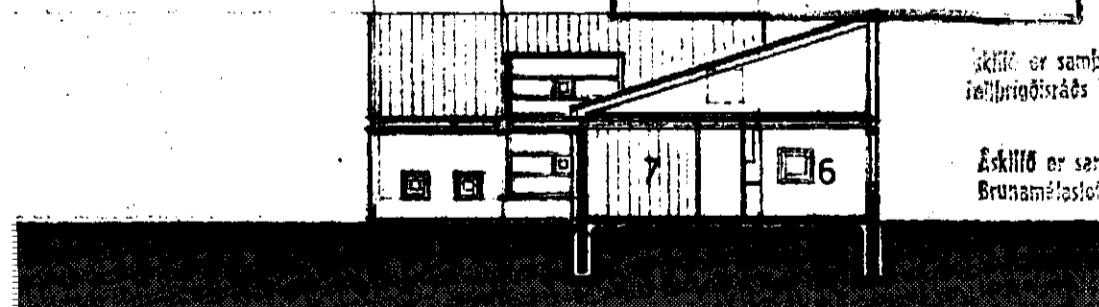


AUSTUR

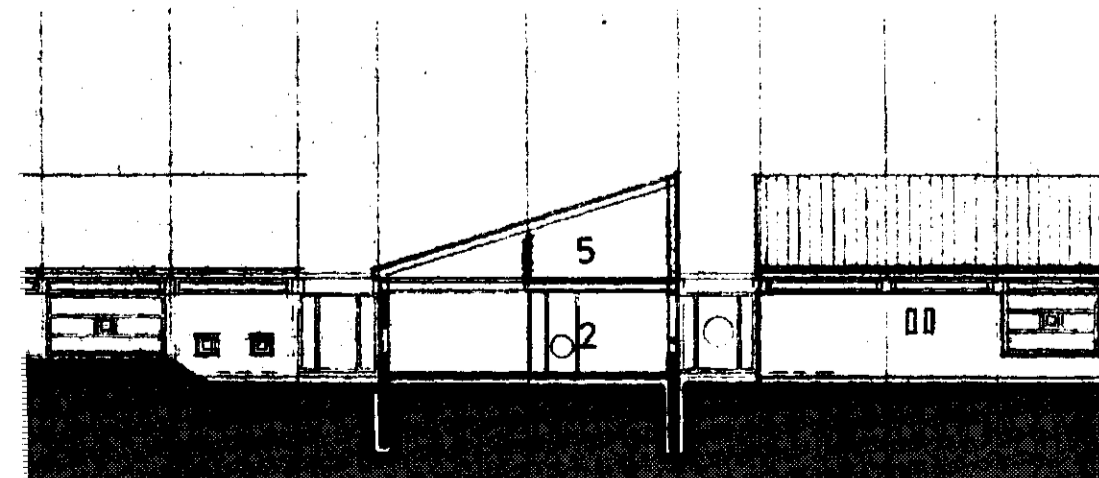
nefndar p. 23/2 1983  
BYGGINGAFULLTRÚINN  
I HAFNARFIRÐI  
*S. Jónsson*



VESTUR



ziding a-a



ziding b-b

skýringar:

byggingarefni, steinsteypt gólf, og veggir að 2,2m. hæð yfir gólfi, timburvirki otar þeirri hæð, klætt járn.

2 leikskóladeildir þ.e. 1. áfangi 283 m<sup>2</sup> brúttó  
240 " nettó

jafngildir 5,7 m<sup>2</sup> á barn, m.v. 42 börn

rúmmál 1134 m<sup>3</sup>

3 leikskóladeildir 367,5 m<sup>2</sup> brúttó  
3132 " nettó

jafngildir 4,9 m<sup>2</sup> á barn, m.v. 64 börn

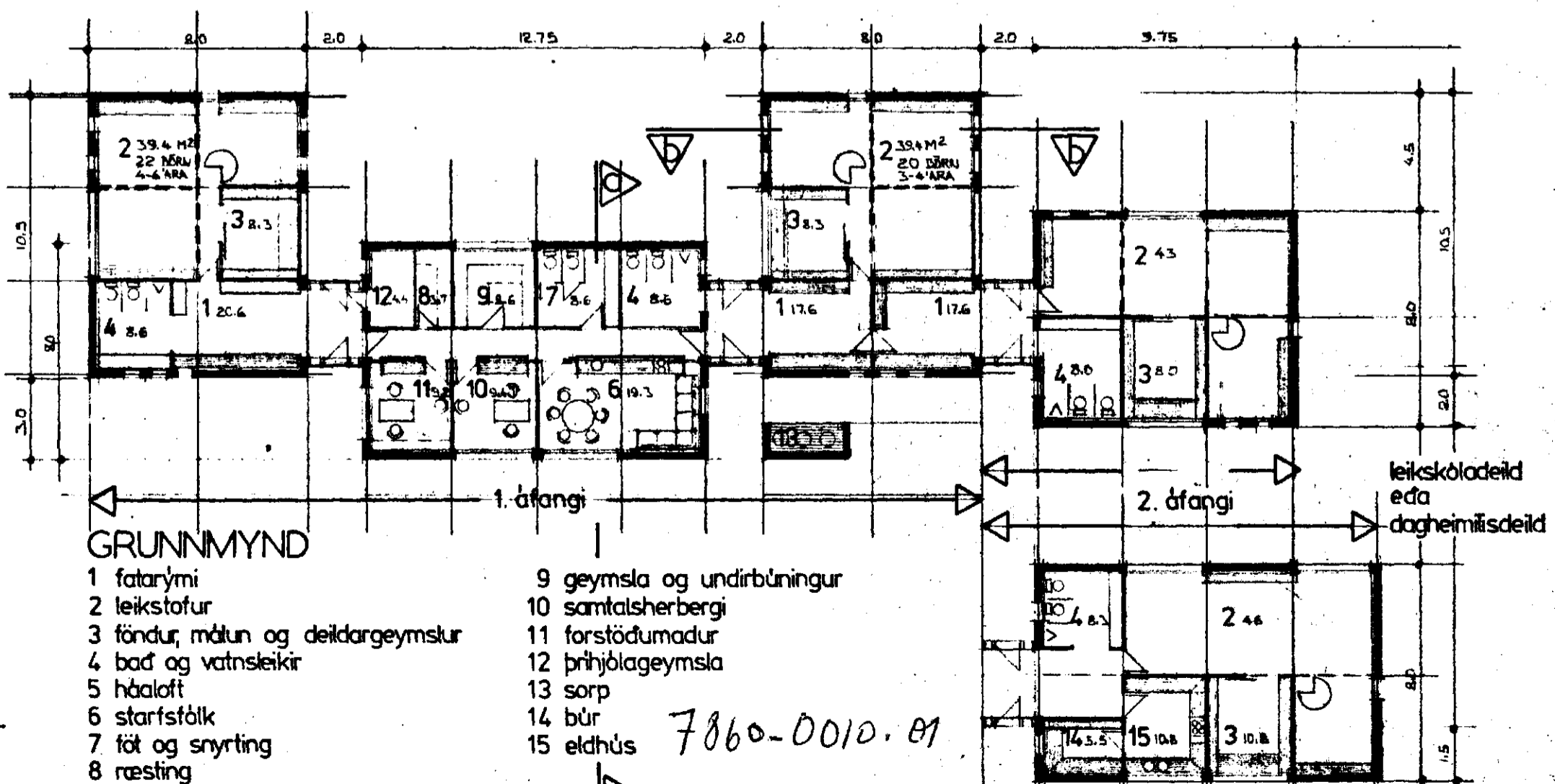
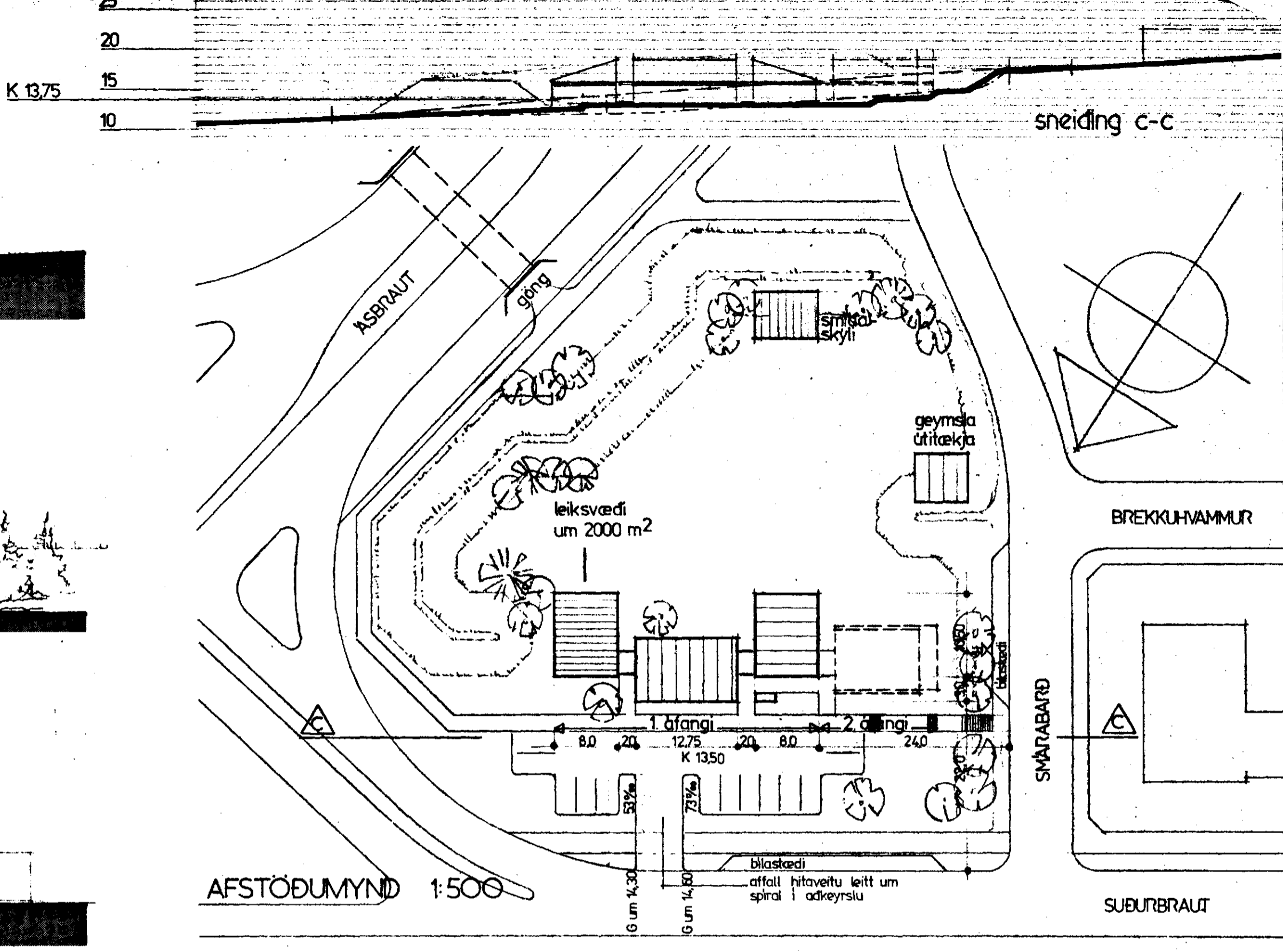
rúmmál 1469 m<sup>3</sup>

2 leikskóladeildir og 1 dagheimli 390 m<sup>2</sup> brúttó  
339 " nettó

jafngildir 5,6 m<sup>2</sup> á barn, m.v. 60 börn (22, 20, 18)  
eða 5,0 " " " a leikskóla (22, 20), og  
7,0 " " " a dagheimli (18 börn)

rúmmál 1609 m<sup>3</sup>

k-gildi skv. 1ST. 66



- 1 fatarymi
- 2 leikstofur
- 3 fönður, mátn og deildargeymslur
- 4 bað og vatnsleikir
- 5 háloft
- 6 startstólk
- 7 fót og snyrting
- 8 ræsting

- 9 geymsla og undirbúningur
- 10 samtalshbergi
- 11 forstöðumadur
- 12 þríhjólageymsla
- 13 sorp
- 14 bú
- 15 eldhús

7860-0010.81