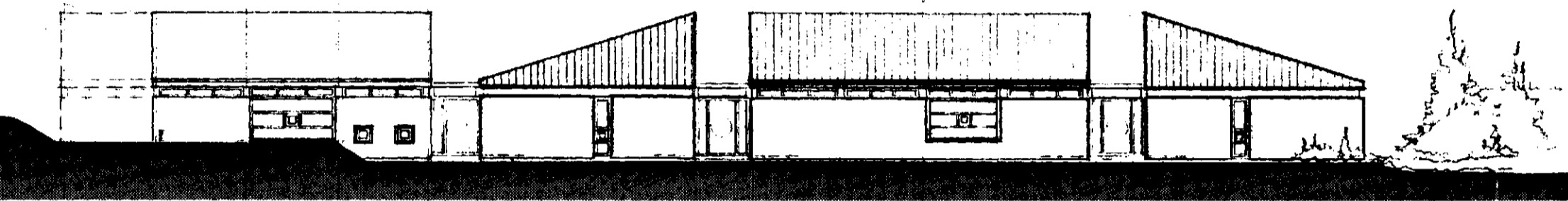
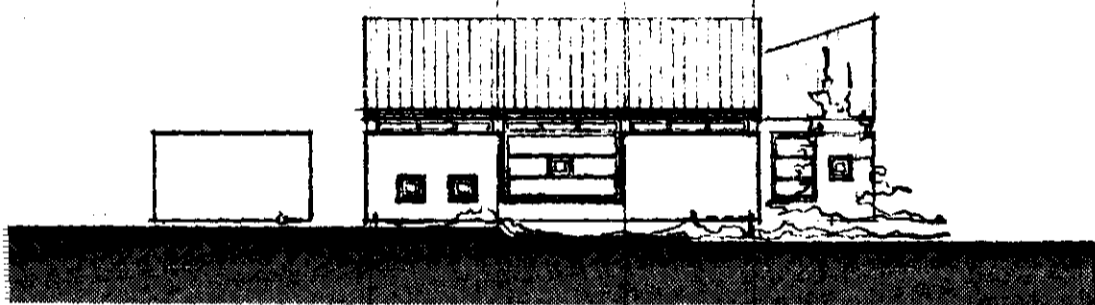


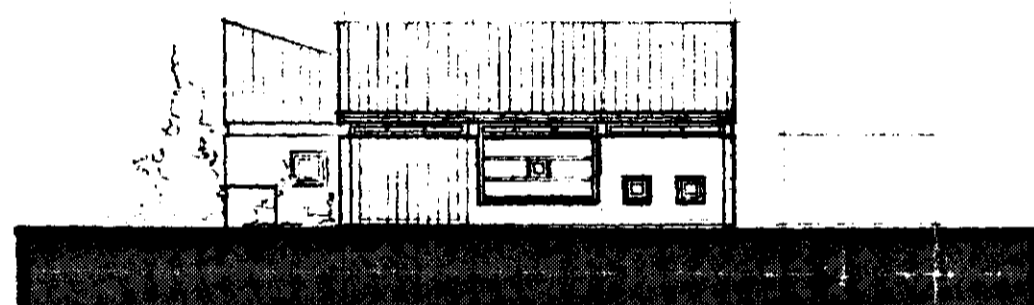
NORDUR



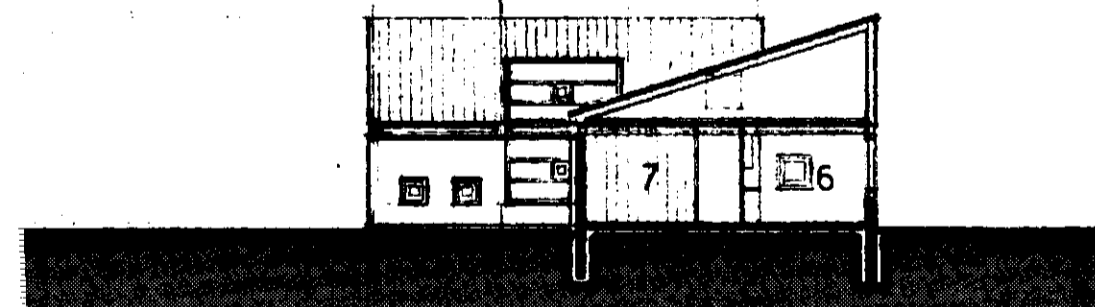
SUDUR



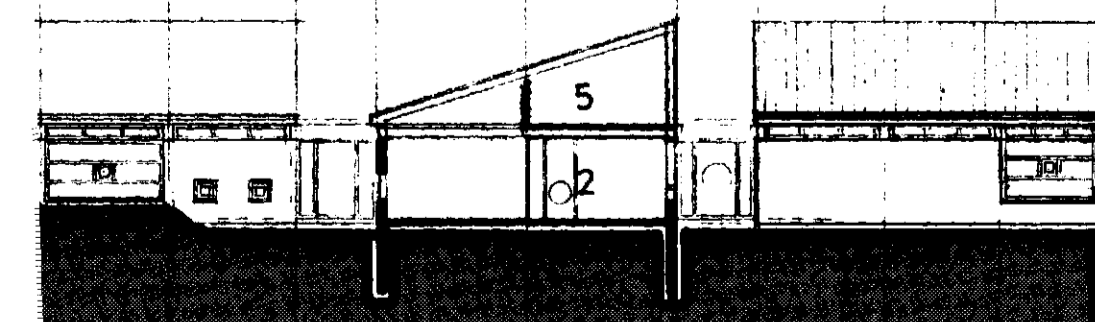
AUSTUR



VESTUR

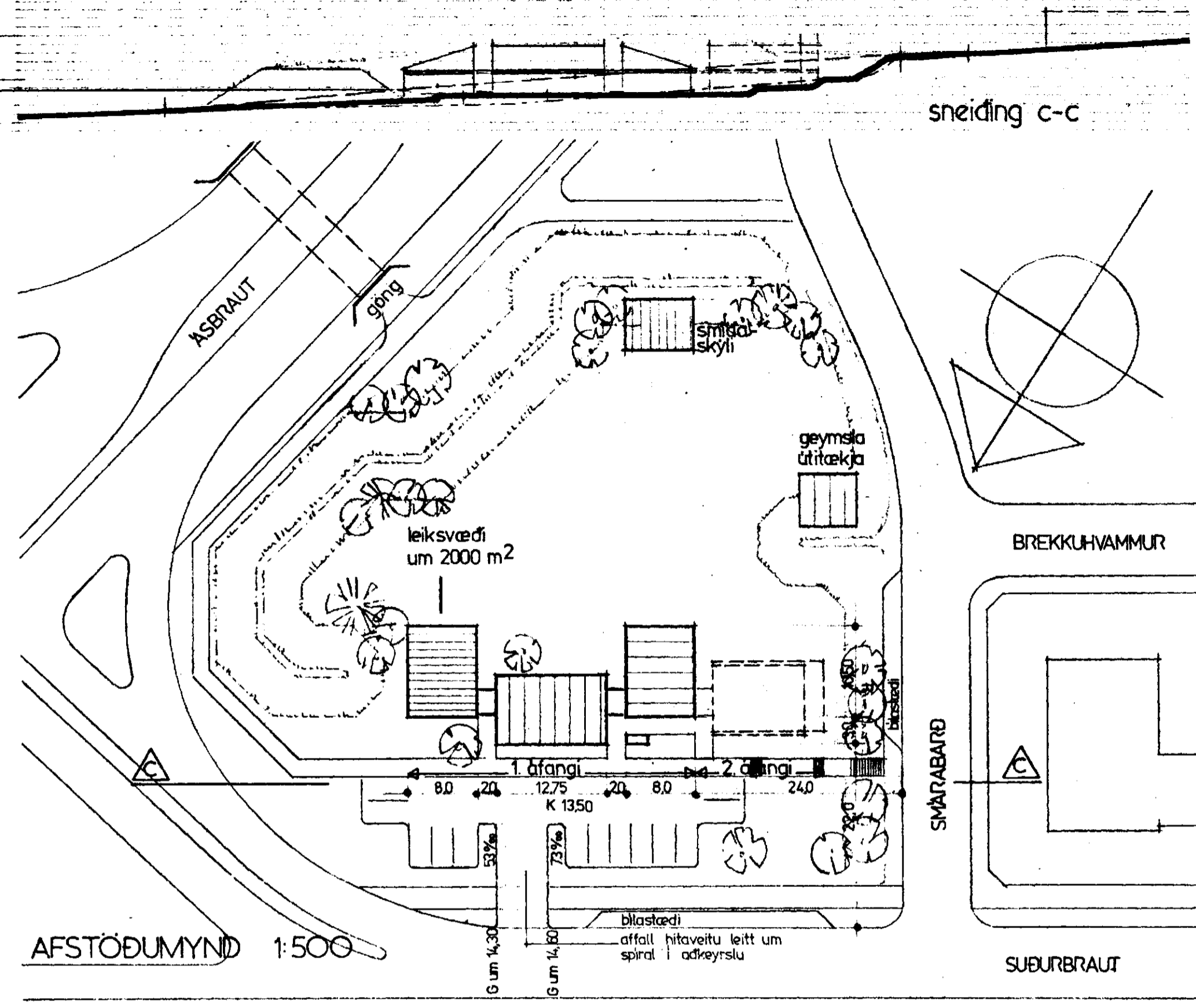


Sneiding a-a



Sneiding b-b

K 13.75  
20  
15  
10



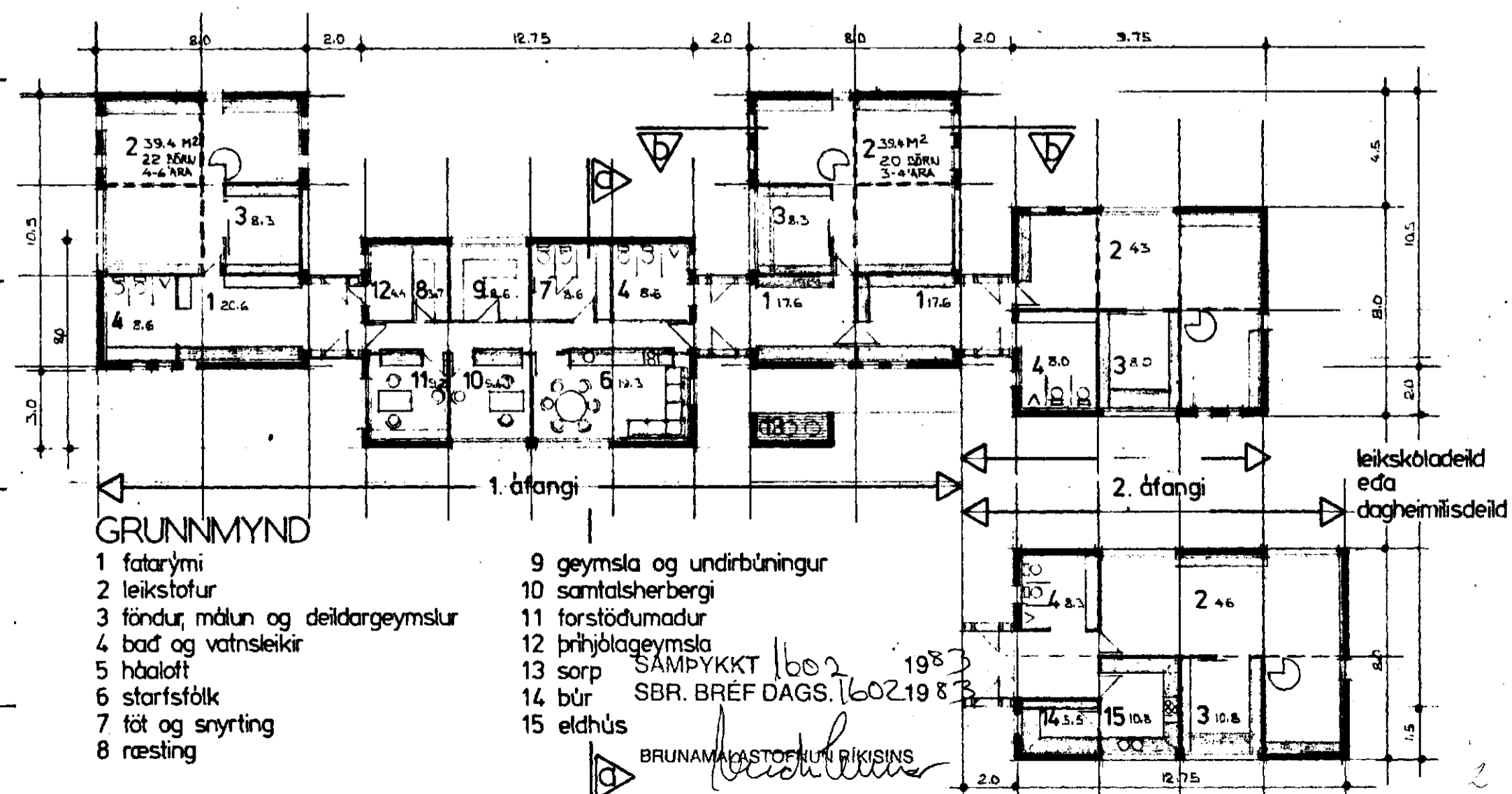
AFSTÖÐUMYND 1:500

skýringar:

byggingarefni, steinsteypt gólf, og veggir að 2,2m. hæð yfir gólfi, timburvirki ofar þeirri hæð, klætt járn.

2 leikskóladeildir þ.e. 1. áfangi	283 m <sup>2</sup> brúttó 240 " nettó
jafngildir 5,7 m <sup>2</sup> á barn, m.v. 42 börn	
rúmmál	1134 m <sup>3</sup>
3 leikskóladeildir	3675 m <sup>2</sup> brúttó 3132 " nettó
jafngildir 4,9 m <sup>2</sup> á barn, m.v. 64 börn	
rúmmál	1469 m <sup>3</sup>
2 leikskóladeildir og 1 dagheimili	390 m <sup>2</sup> brúttó 339 " nettó
jafngildir 5,6 m <sup>2</sup> á barn, m.v. 60 börn (22, 20, 18)	
eda 5,0 " " " a leikskóla (22, 20), og 7,0 " " " a dagheimili (18 börn)	
rúmmál	1609 m <sup>3</sup>

k-gildi skv. 1ST. 66



GRUNNMYND

- 1 fatarymi
- 2 leikstofur
- 3 föndur, mátn og deildargeymslur
- 4 bað og vatnsleikir
- 5 háaloft
- 6 starfsbólk
- 7 föt og snyrting
- 8 ræsting

- 9 geymsla og undirbúningur
- 10 samtalshærgi
- 11 forstöðumadur
- 12 þrjúlagageymsla
- 13 sorp
- 14 búr
- 15 eldhús

BRUNAMÁKASTOFNUN RÍKISINS