

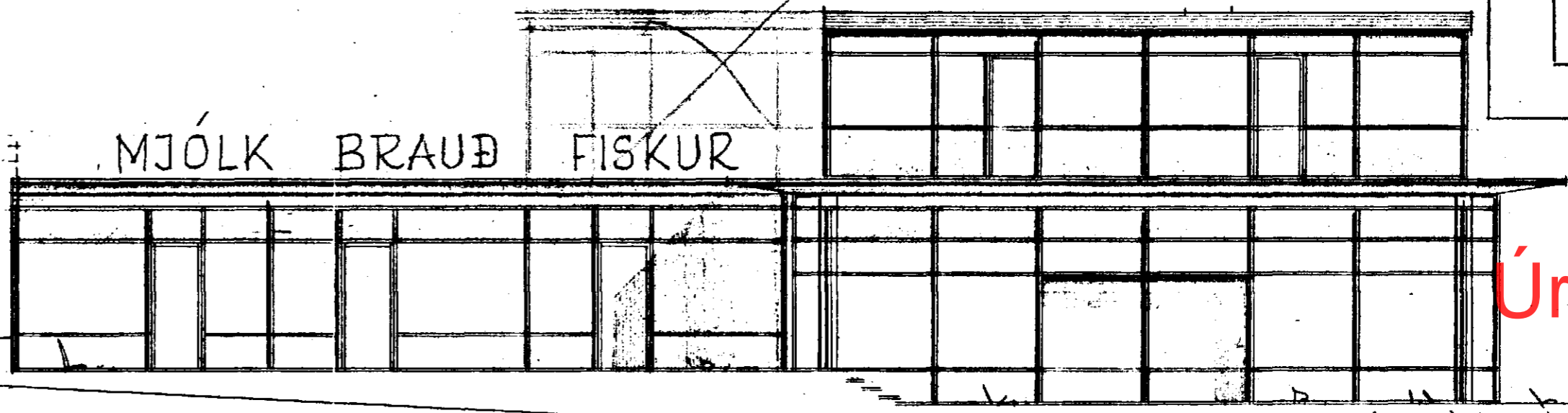
VERZLUNARHÚS Í HAFNARFIRÐI

Útlitsmyndir og langskurður M-1:100

Samþykkt á fundi bygginga-
nefndar þ. 28. 11. 1962

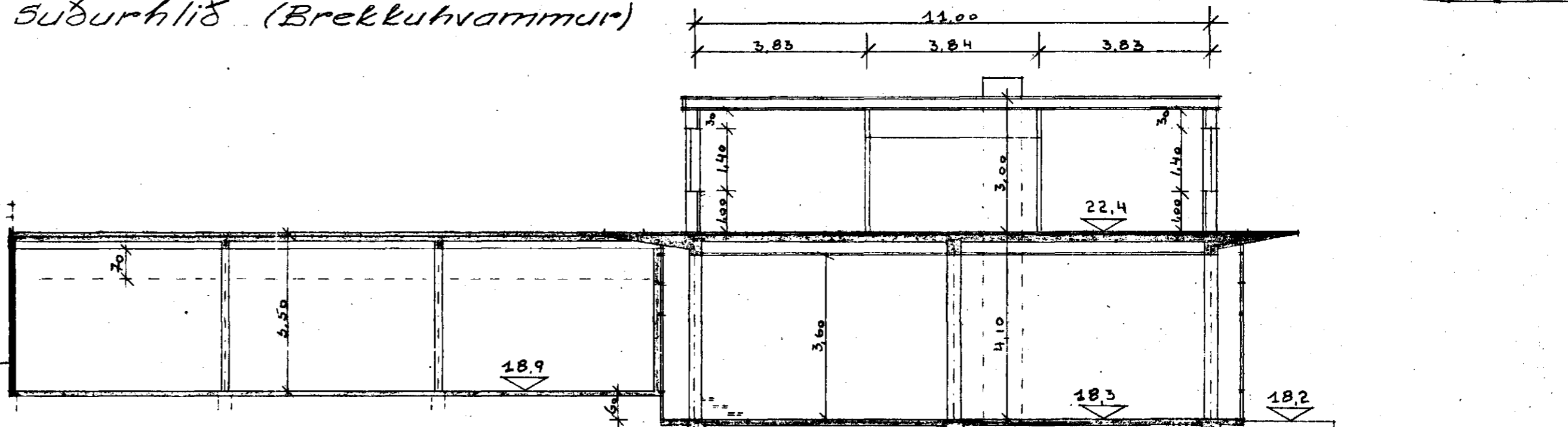
BYGGINGAFLUTRÖNN
Í HAFNARFIRÐI

Jón Rasmussen

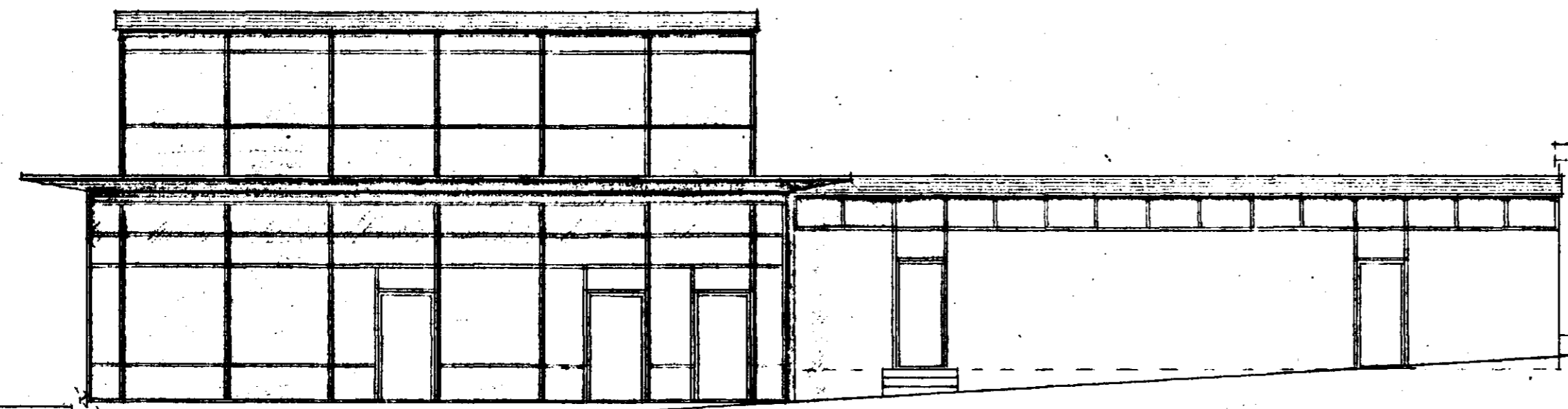
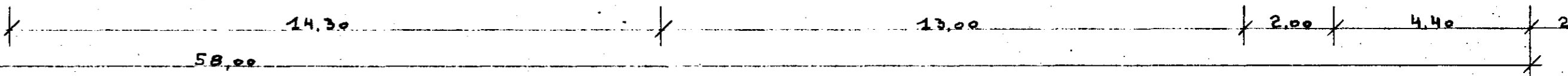


Úr Gildi

Suðurhlið (Brekkuvammur)



Langskurður



Norðurhlið (Reykjanesbraut)

Reykjavík í nóv. 1962
Lummlaugur Pálsson