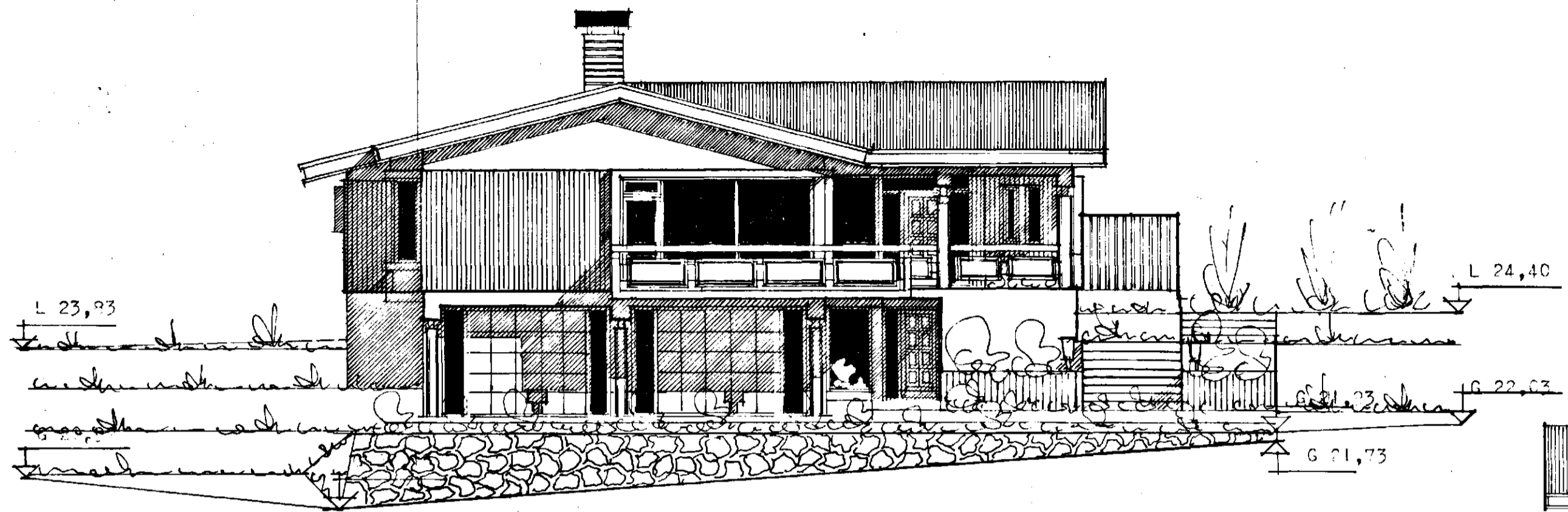


Samþykkt á fundi bygginga-
nefndar þ. 19.9.1979
BYGGINGAFULLTRÚINN
Í HAFNARFIRÐI
[Signature]

Ganga skal frá opnu
eldstæði í samráði við
slökkviliðsstjóra



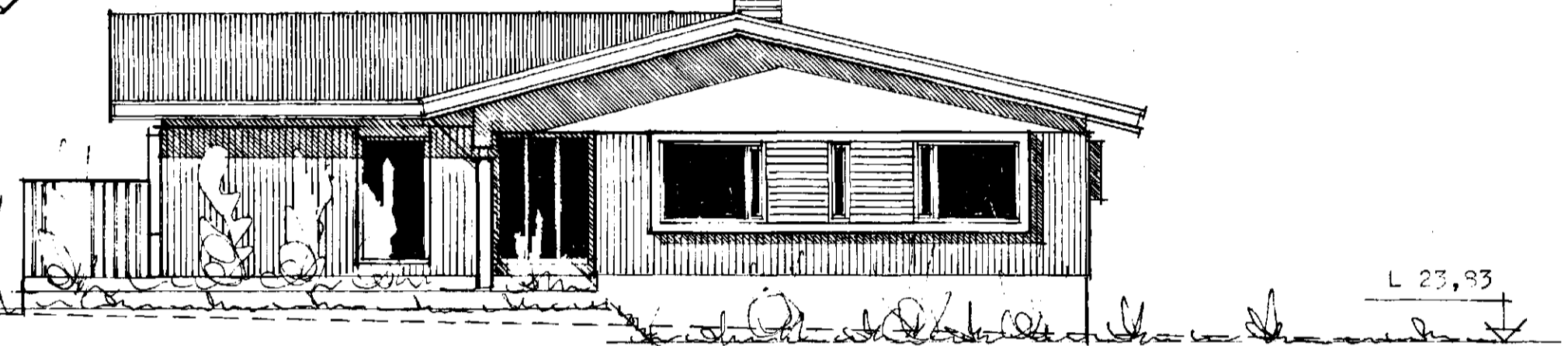
NORÐ-VESTUR

L 24,40

L 23,93

G 22,03

G 21,73



SUÐ-AUSTUR

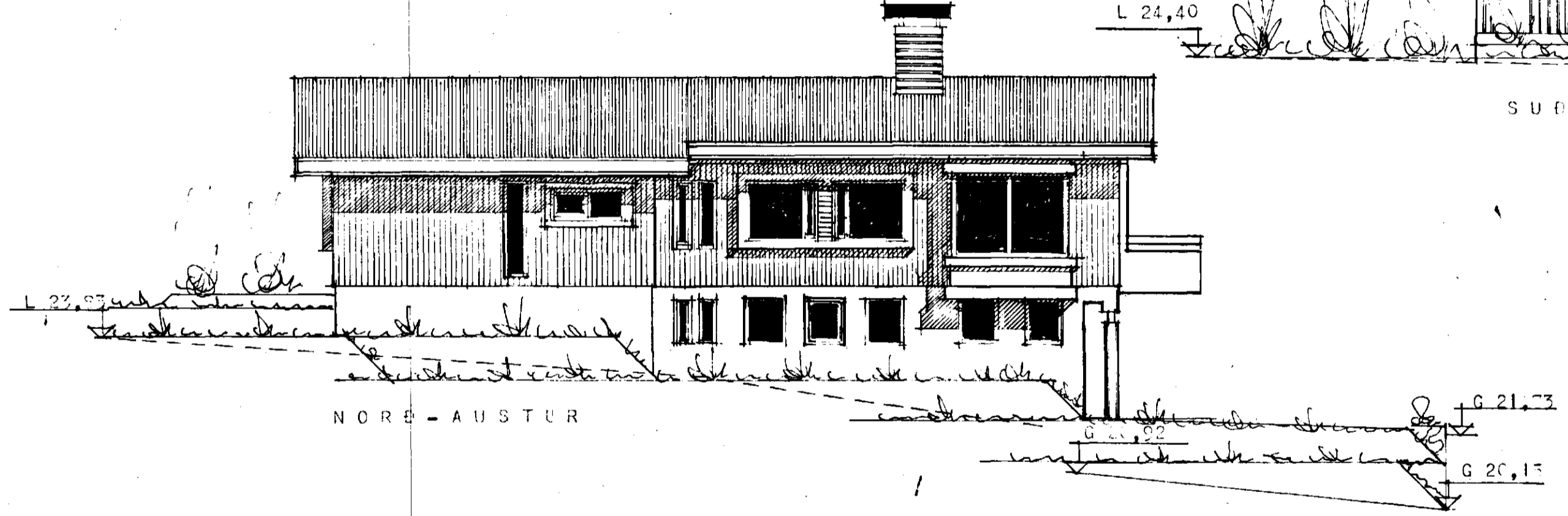
L 23,93

L 24,40

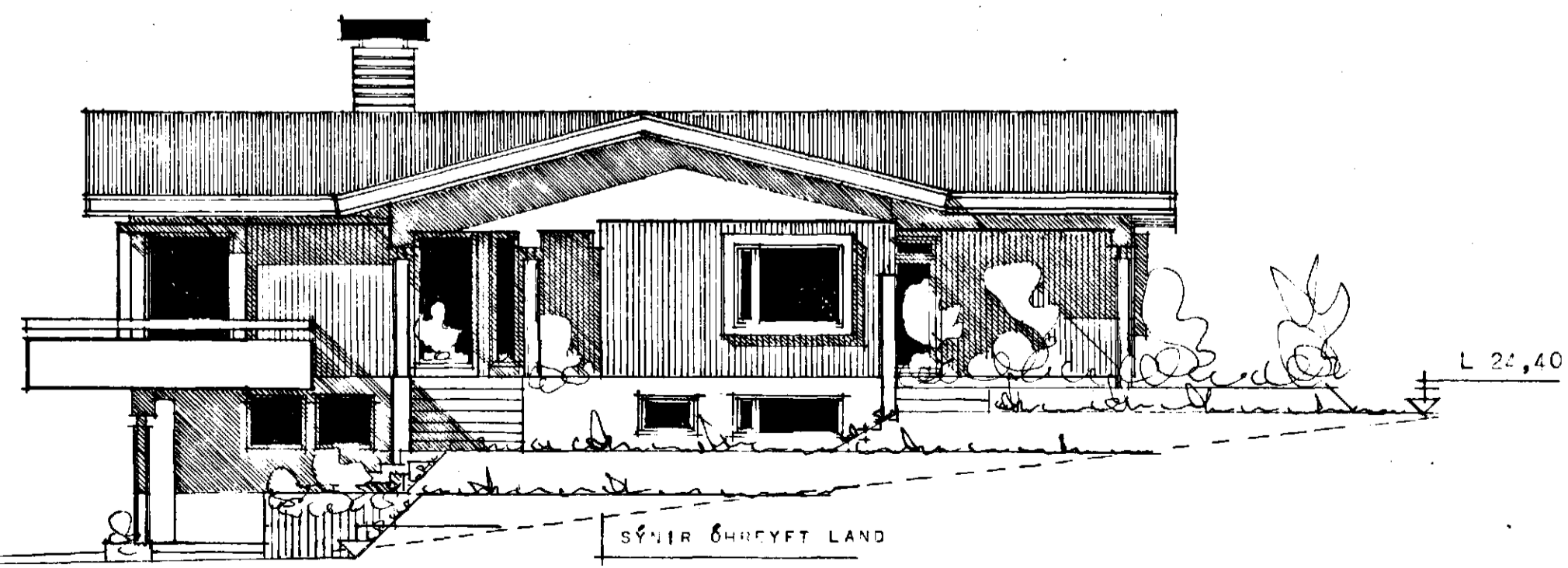
L 23,93

G 21,73

G 20,15



NORÐ-AUSTUR



SUÐ-VESTUR

G 21,73

L 24,40

SÝNIR ÖHREYFT LAND

REYKJAVÍK 1. SEPTEMBER 1979
[Signature]