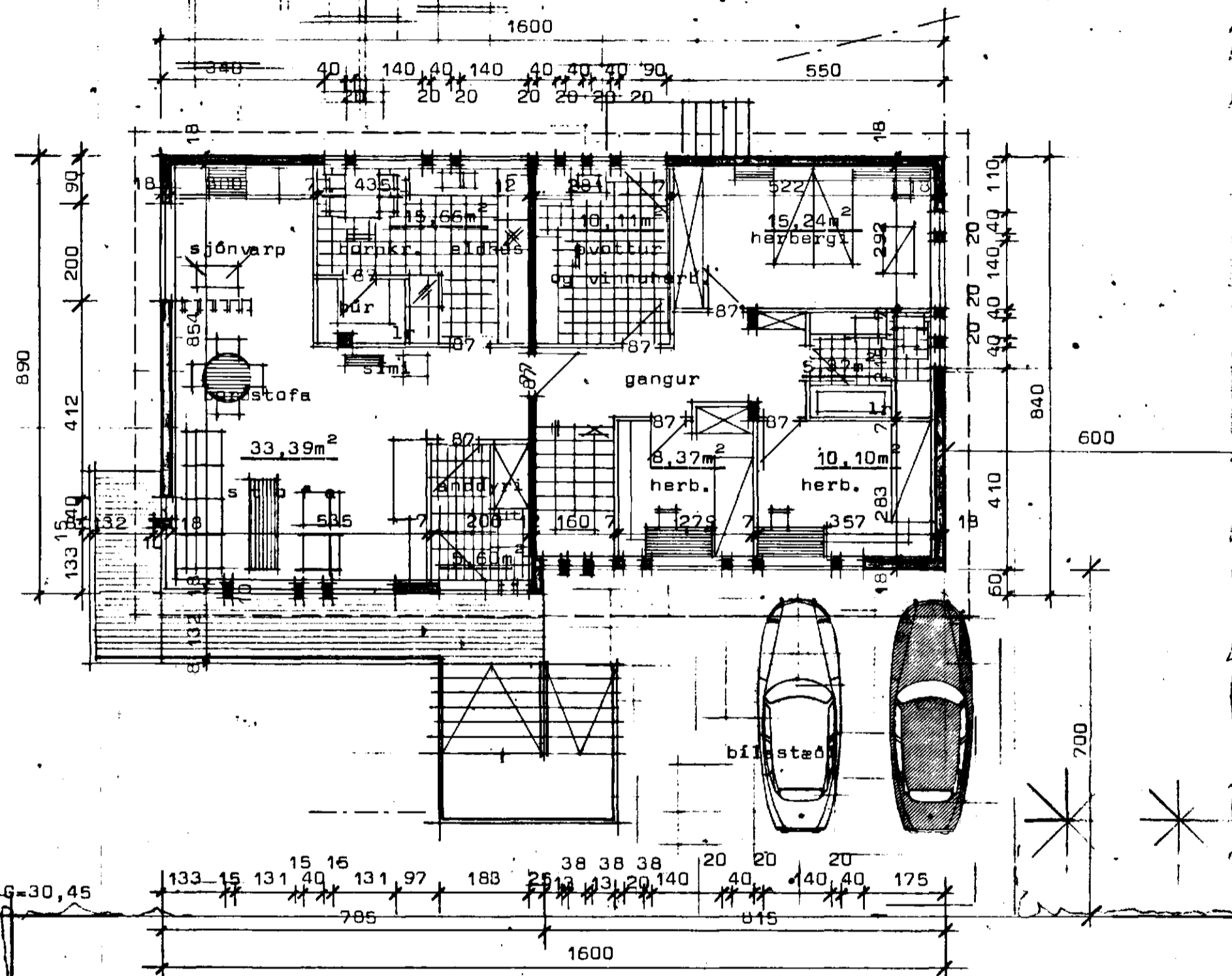


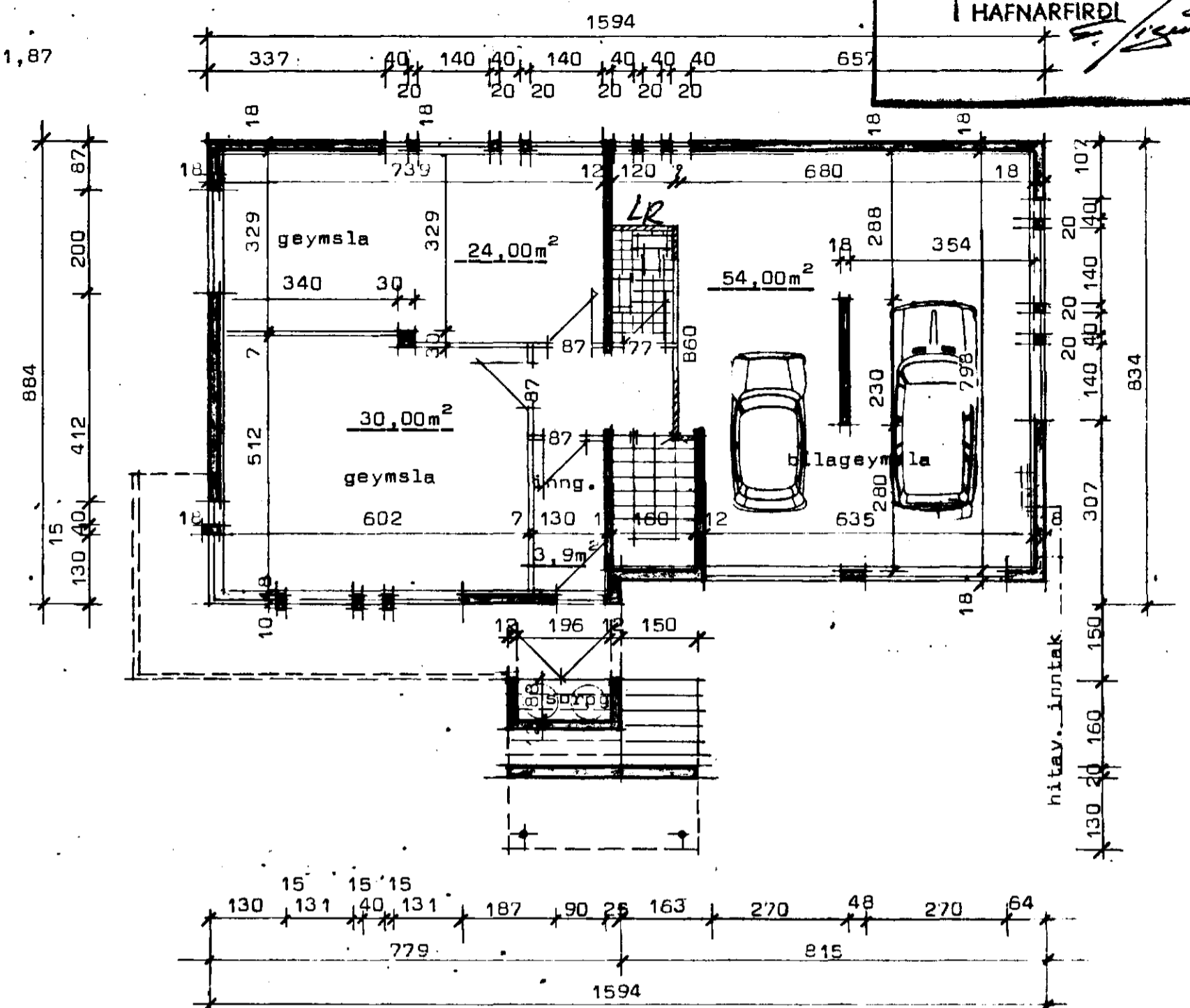
SMÁRAHVAMMUR 2 Hafnarfirði

Sambykkt á fundi bygginga-
nefndar þ. 18.7.1979
BYGGINGAFULLTRÚINN
I HAFNARFIRÐI

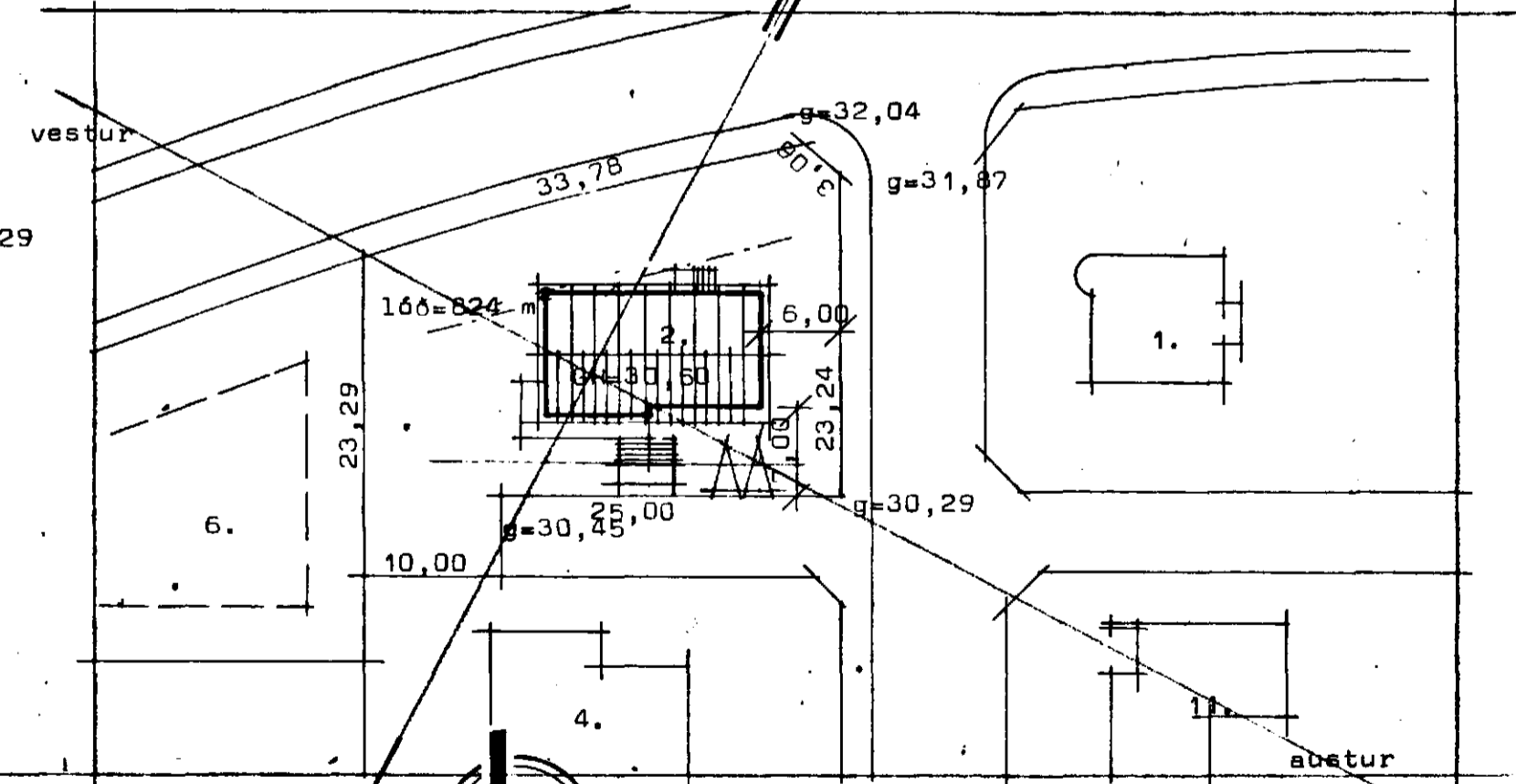


Flatarmál lóðar	824,00m ²
Flatarmál íbúðarhæðar	137,65m ²
Flatarmál kjallara	139,65m ²
Samanl. flatarmál	277,30m ²
Nýtingarhlutfall	0,336
Heildarrúmmál húss	808,00m ³
Ir merkir loftrás upp úr þaki 10x15cm.	

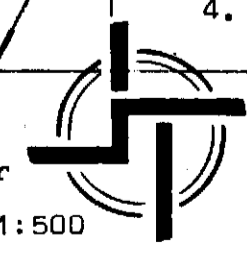
Kólinunartölur K	
Þak	0,30 w/m ² C ^o
Gólf	0,40 w/m ² C ^o
Ótveggir	1,00 w/m ² C ^o



Grunnmynd kjallara suður



Afstöðumynd Mkv 1:500



STADALHÚS TEIKNISTOFA

SUDURLANDSBRÁUT 20 SIMI 83141

VERKEFNI	DAGS.	1978	VERK NR
Grunnmyndir og afstöðumynd	MKV.	1:100 1:500	H1
Smárahvammur 2 Hafnarfirði	BR.		
	BLAD NR	1,01	

SIGURDUR GUDMUNDSSON SIGURDUR P. KRISTJÁNSSON FTFÍ