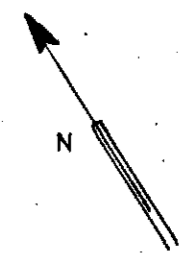
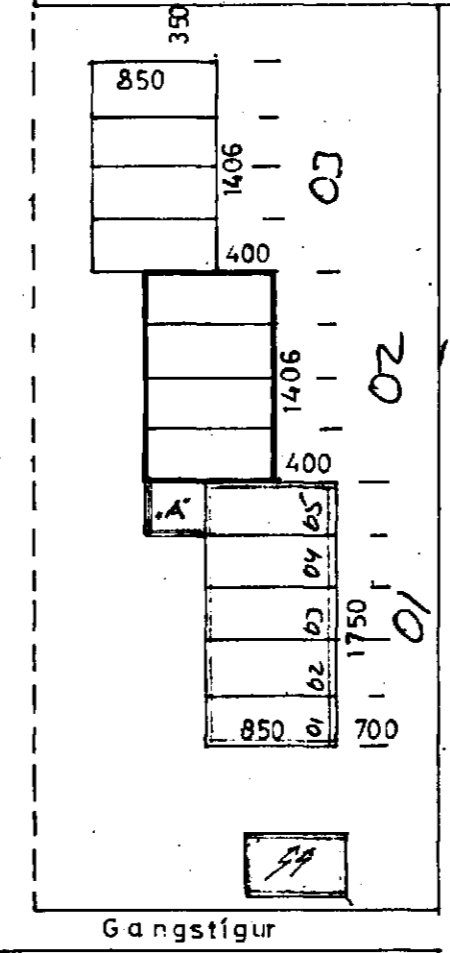
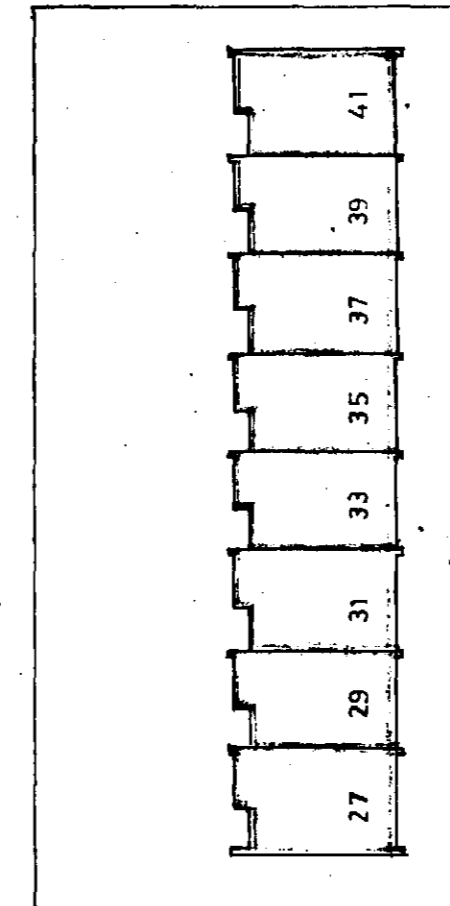
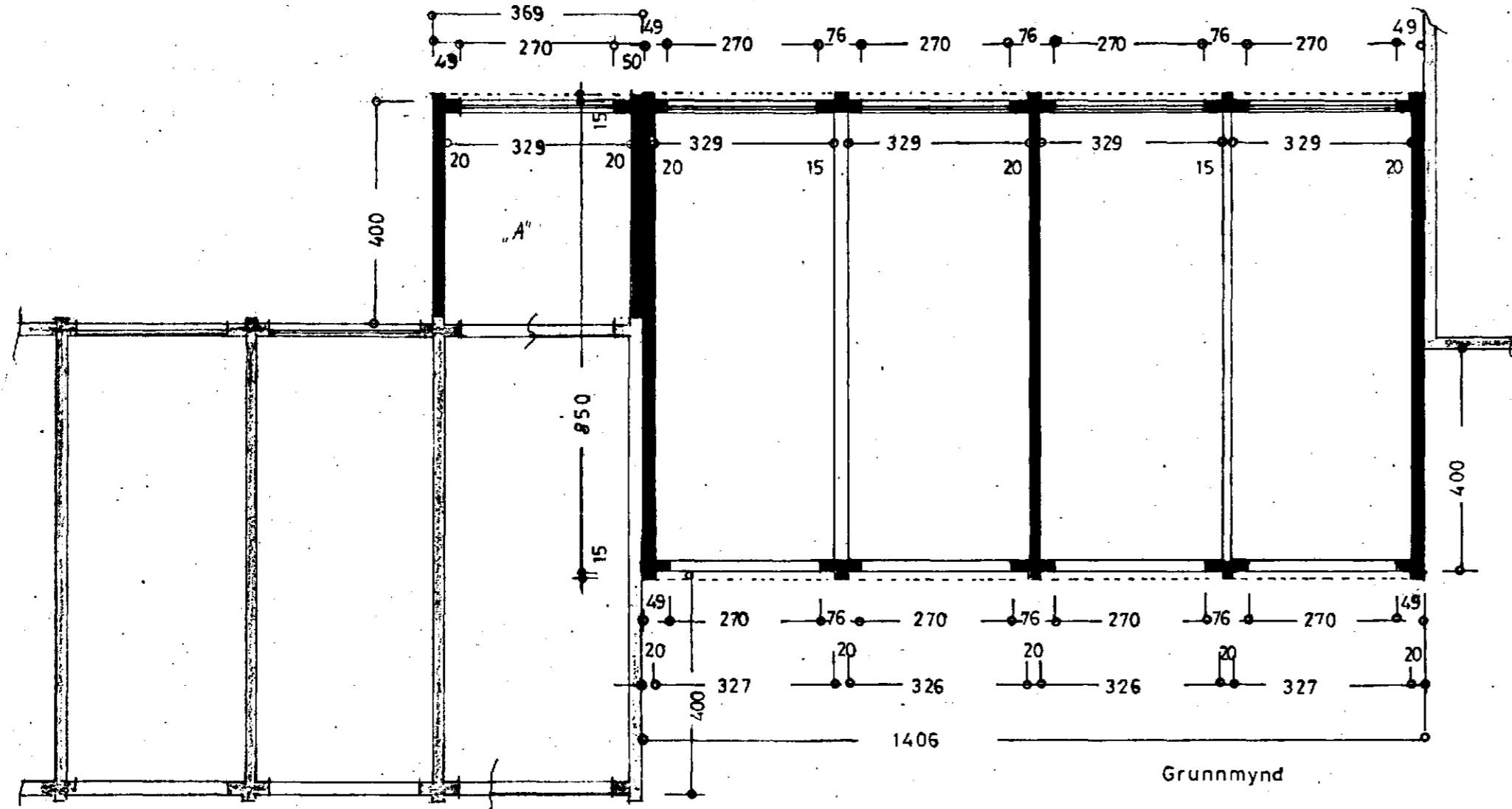
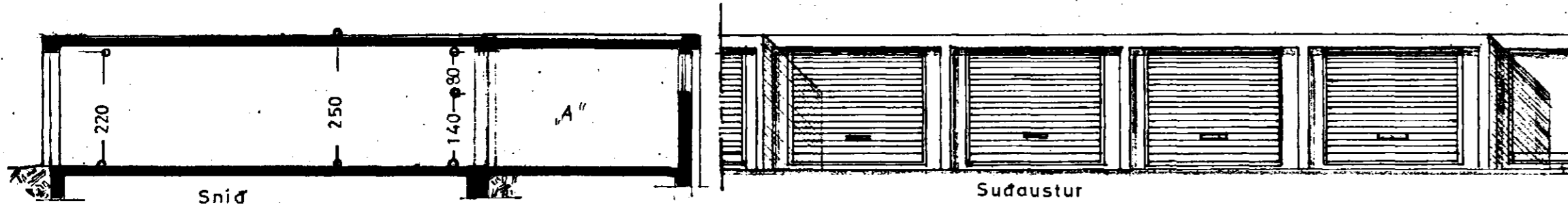
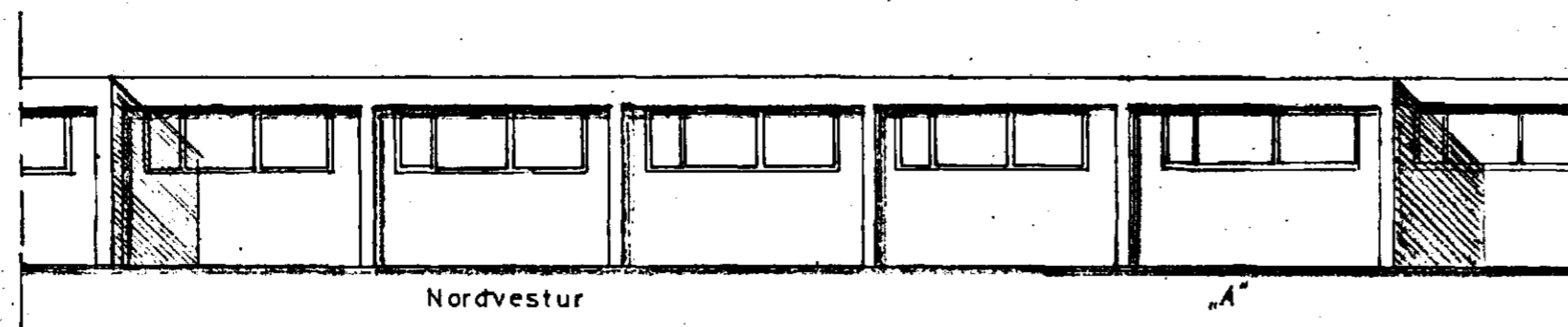
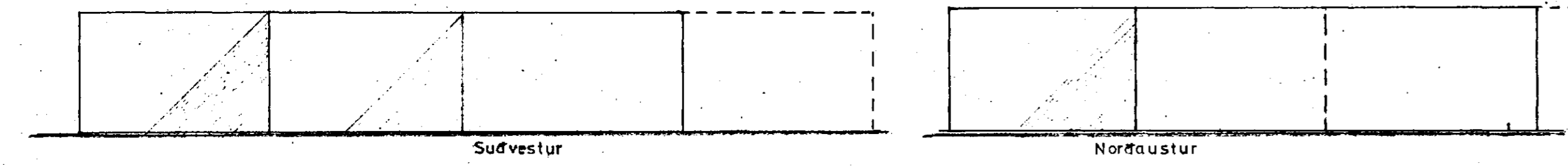


Samþykkt á fundi bygginga-  
ráðs nr. 71 // 19. 84  
BYGGINGARLÖG  
Í LAR 1984  
*E. Sigurðsson*



Afstöðumynd  
1:500

STÆÐ:  
299 m<sup>3</sup> x 4 = 119,5 m<sup>2</sup>  
74,8 m<sup>3</sup> x 4 = 299,0 m<sup>3</sup>  
A'' STÆKKUN BÍLG. NR 30: 14,8 m<sup>2</sup>, 37 m<sup>3</sup>

LÖÐIN NR 27B VIÐ SMYRLAHRAUN  
**SMYRLAHRAUN NR.27-33**  
OG NR.30 (A'') STÆKKUN BÍLGEYMSLUR

ÚTLIT  
GRUNNMYND } 1:100  
SNIÐ

AFSTÖÐUMYND 1:500

*Hafnarstíðis & jarðvar 1972*  
nr. 30 Breytt 1. okt. '84  
*E. Sigurðsson*

7960-0272. 01.01.05