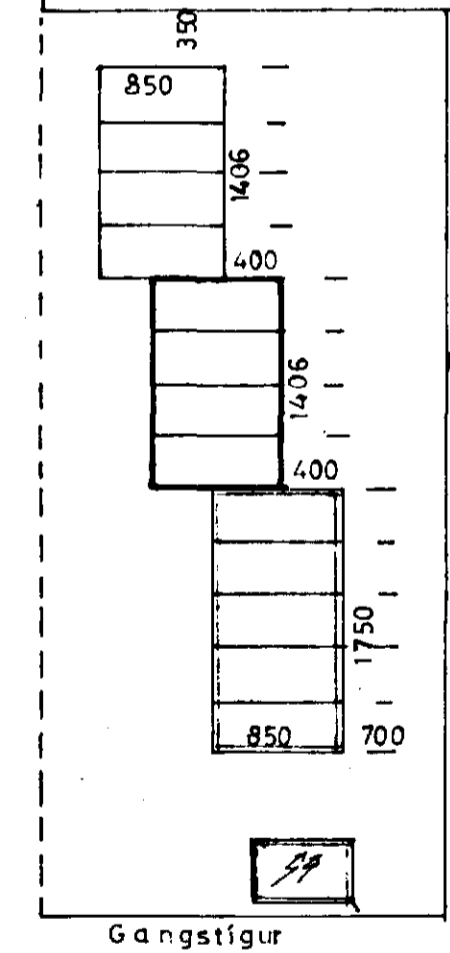
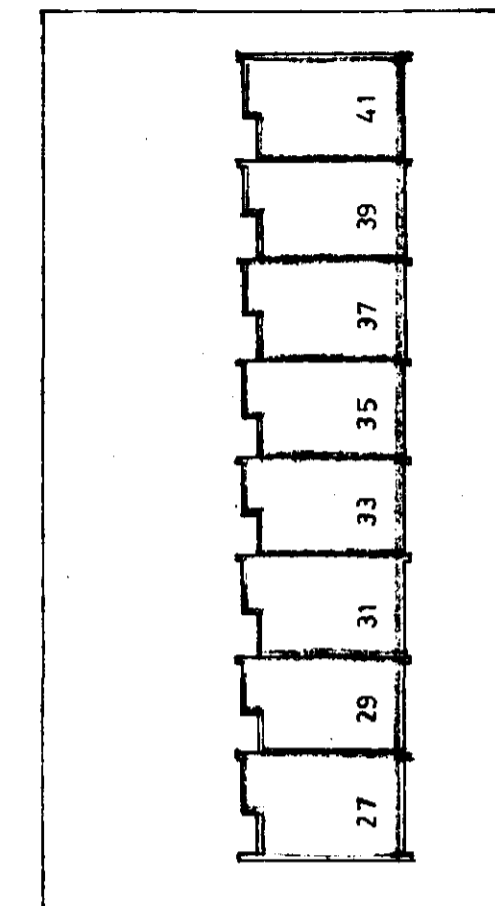
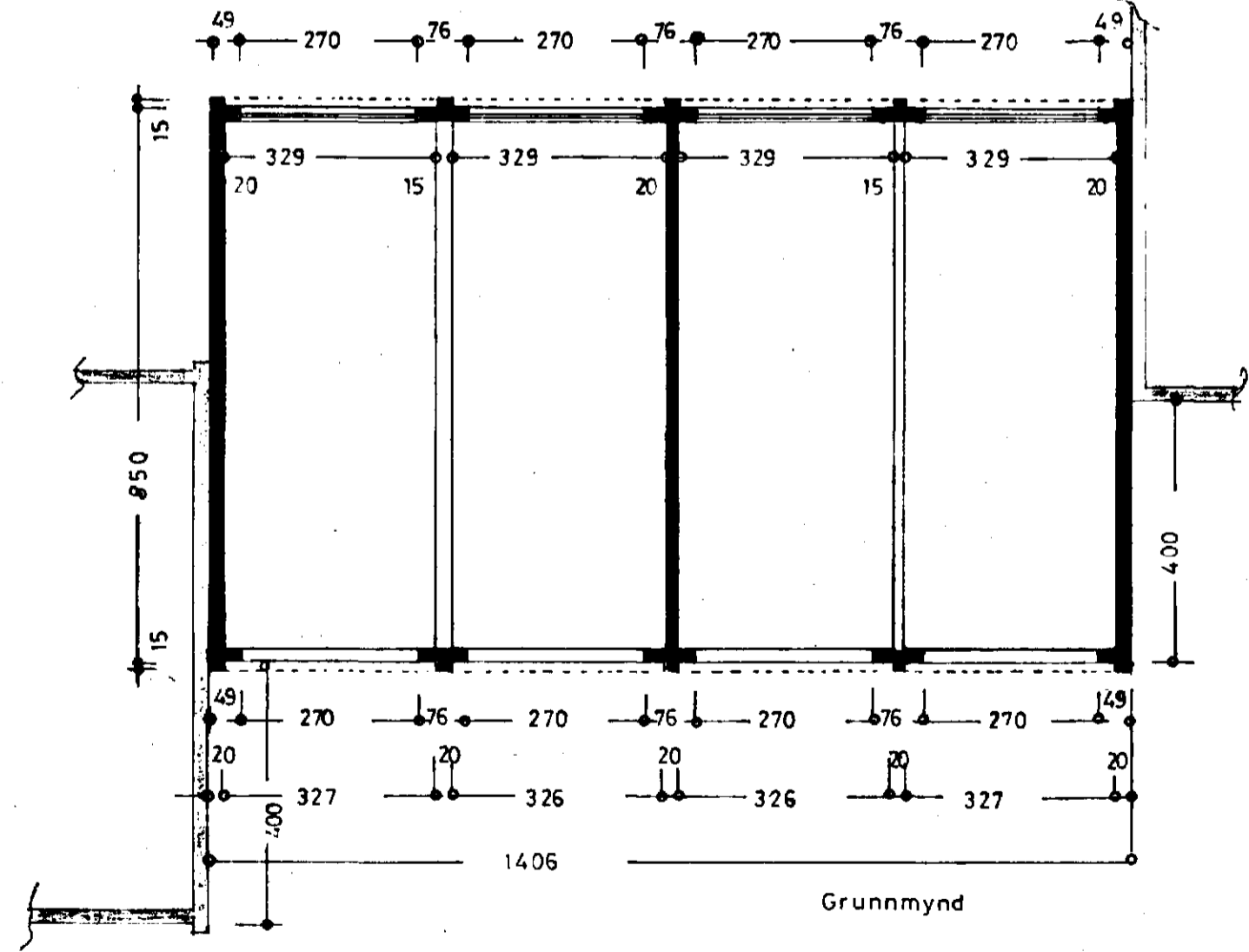
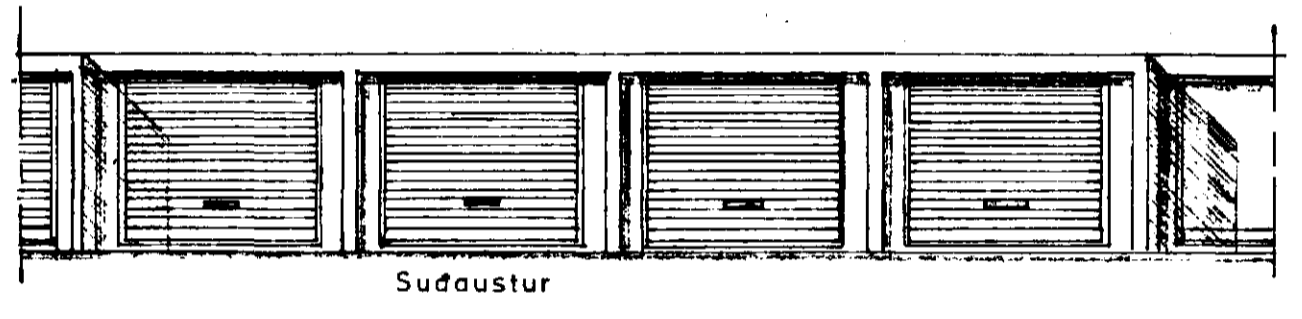
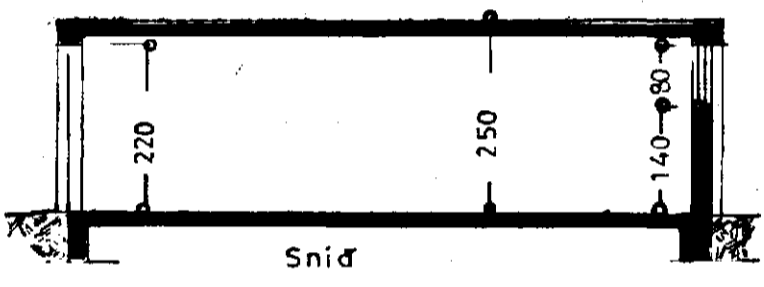
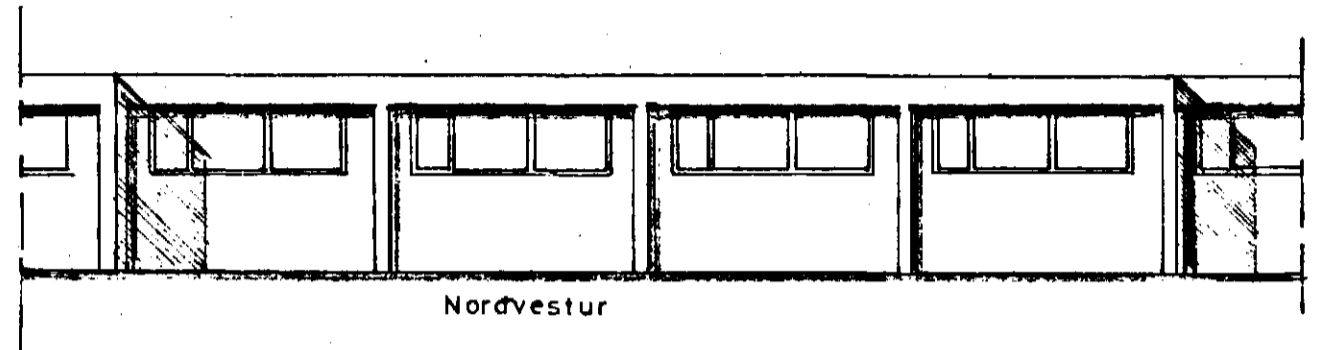
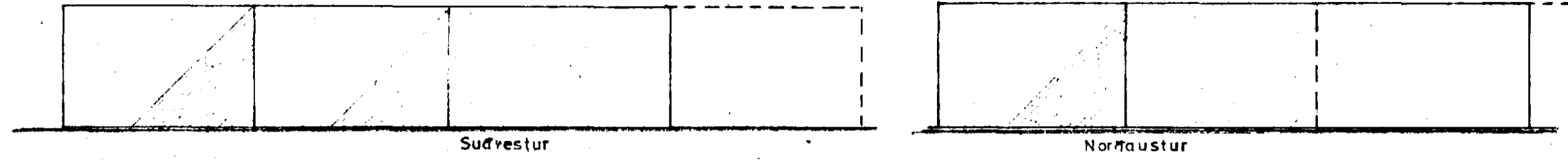


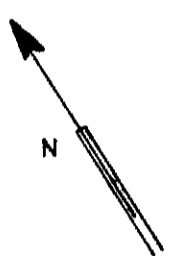
Jambykkt á fundi bygginga-
nefndar þ. 26. 1. 1972

BYGGINGAFLITRÚINN
Í HAERNAHROU

E. Sigurdsson



Afstöðumynd
1:500



SMYRLAHRUN

SMYRLAHRUN

STERÐ:
299 m² x 4 = 1195 m²
748 m³ x 4 = 2990 m³

NR 29

SMYRLAHRUN NR.27-33
BÍLGEYMSLUR

ÚTLIT }
GRUNNMYND } 1:100
SNID }

AFSTÖÐUMYND 1:500

E. Sigurdsson
26. Janúar 1972