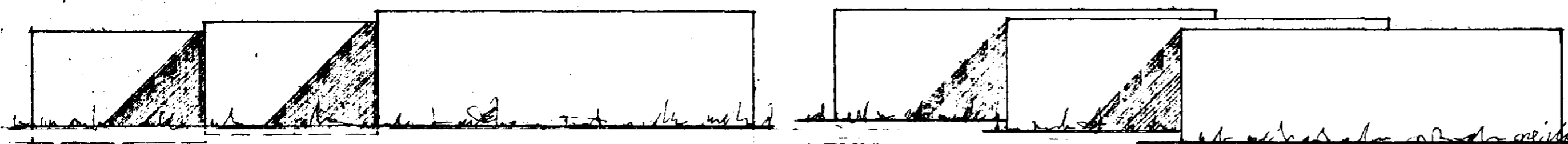


Samþykkt á fundi bygginga-
nefndar þ. 26/7 1972

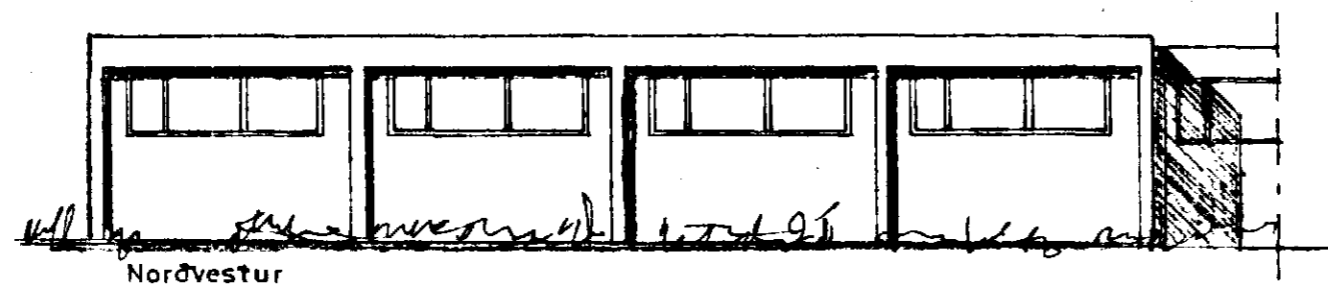
BYGGINGAFLUTRÚINN
Í HAFNARFIRÐI

F. Sigurðsson

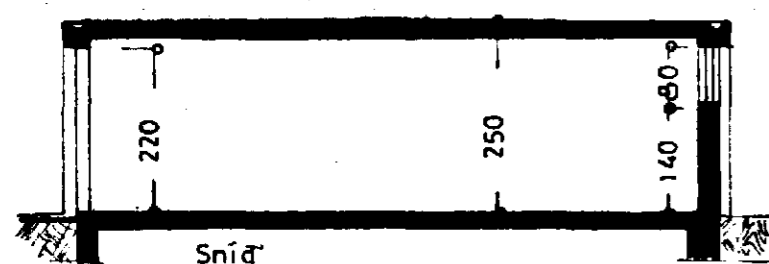


Nordaustur

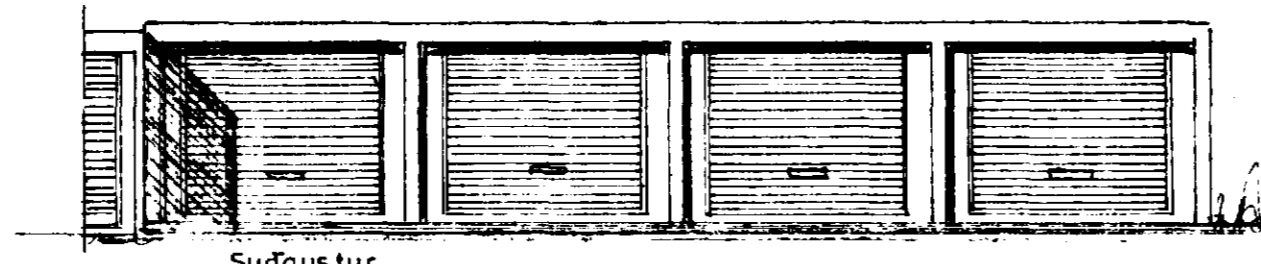
Suðvestur



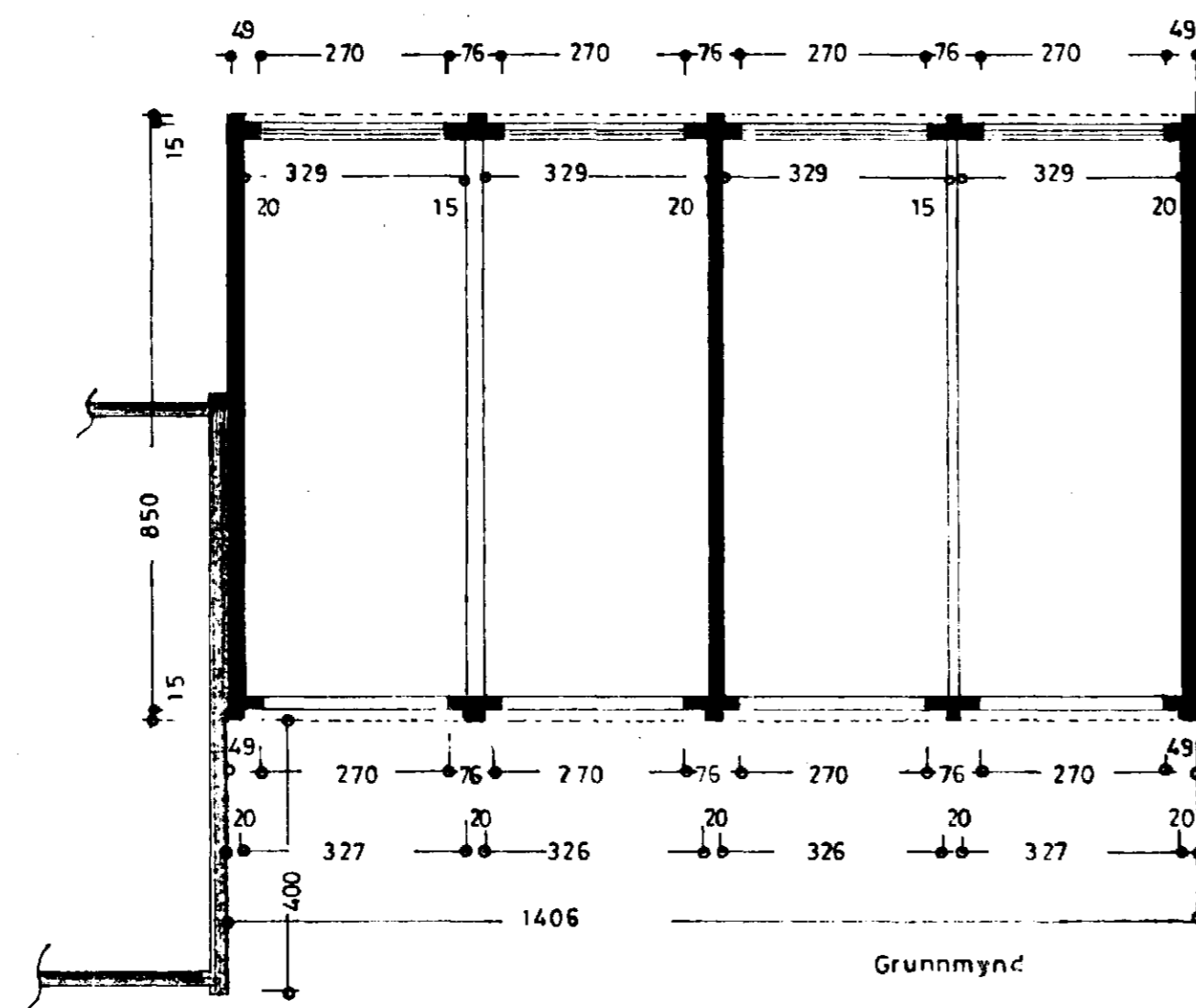
Nordvestur



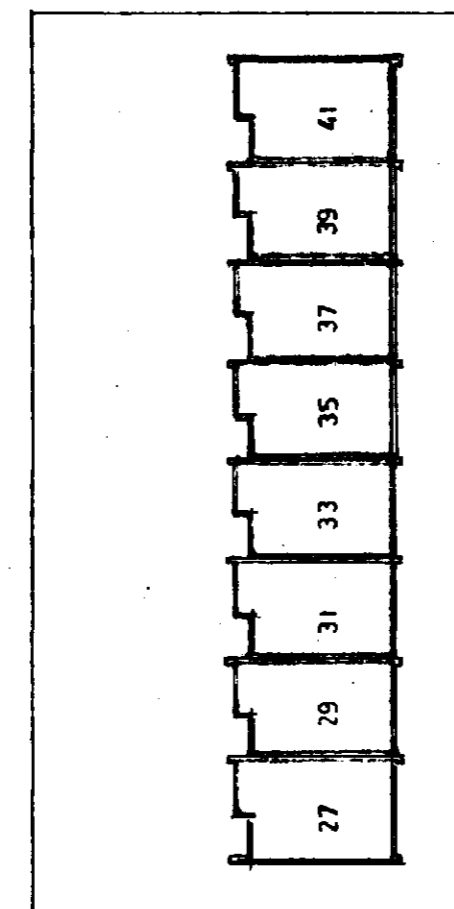
Sníð



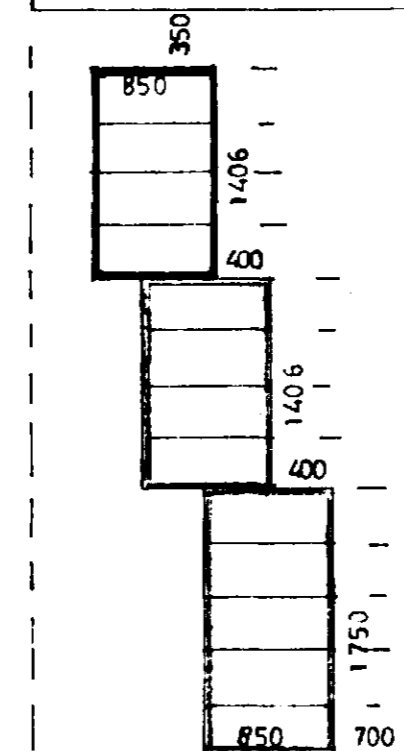
Suðaustur



Grunnmynd

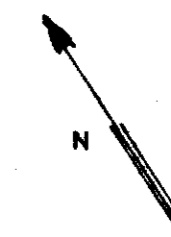


Gangstigur



Gangstigur

Afstöðumynd
1:500



SMYRLAHRAUN

SMYRLAHRAUN

STÆRD:
299 m² x 4 = 1195 m²
74,8 m³ x 4 = 299,0 m³

SMYRLAHRAUN NR.35-41

BÍLGEYMSLUR

ÚTLIT }
GRUNNMYND } 1:100
SNÍÐ } 1:100

AFSTÖÐUMYND 1:500

Hafnarfirði á júlí 1972

F. Sigurðsson

TEIKN:

Jannar