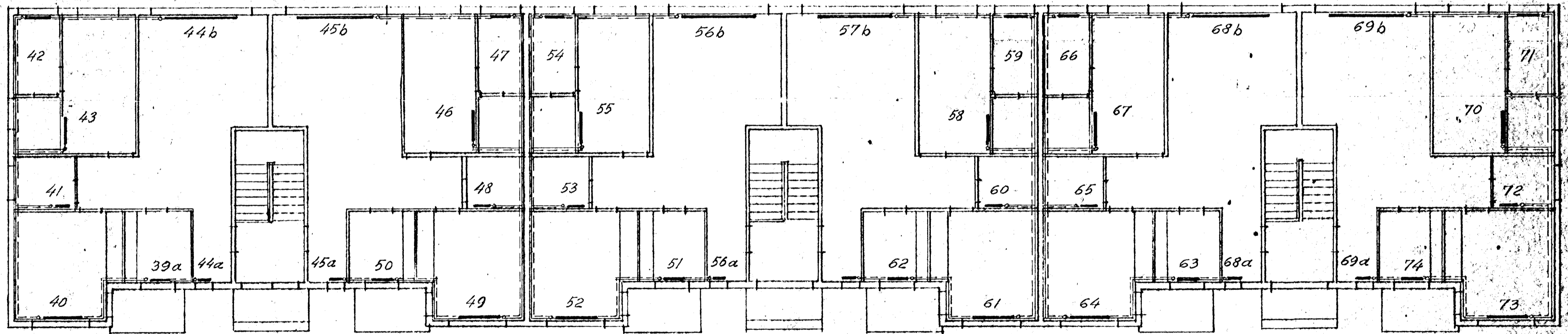


OFN NR.	KCAL/H	STEYPUJÁRNS-OFNAR "NEO-CLASSIC"
39a	730	10-4/30"
40	2110	29-4/30"
41	560	8-4/30"
42	1000	14-4/30"
43	1200	17-4/30"
44a	300	8-2/30"
44b	2270	58-4/18"
45a	300	8-2/30"
45b	2270	58-4/18"
46	1200	17-4/30"
47	680	18-2/30"
48	220	6-2/30"
49	1720	24-4/30"
50	730	10-4/30"

OFN NR.	KCAL/H	STEYPUJÁRNS-OFNAR "NEO-CLASSIC"
51	730	10-4/30"
52	1720	24-4/30"
53	220	6-2/30"
54	680	18-2/30"
55	1200	17-4/30"
56a	300	8-2/30"
56b	2270	58-4/18"
57a	300	8-2/30"
57b	2270	58-4/18"
58	1200	17-4/30"
59	680	18-2/30"
60	220	6-2/30"
61	1720	24-4/30"
62	730	10-4/30"

OFN NR.	KCAL/H	STEYPUJÁRNS-OFNAR "NEO-CLASSIC"
63	730	10-4/30"
64	1720	24-4/30"
65	220	6-2/30"
66	680	18-2/30"
67	1200	17-4/30"
68a	300	8-2/30"
68b	2270	58-4/18"
69a	300	8-2/30"
69b	2270	58-4/18"
70	1200	17-4/30"
71	1000	14-4/30"
72	560	8-4/30"
73	2110	29-4/30"
74	730	10-4/30"



2. HÆÐ

GUNNAR TOMASSON, VERKFR., M.V.F.I. BARMÁHLÍÐ 31, RVÍK., Sími 23932		
SMYRLAHRUN 43-45-47, HAFNARF. HITAKERFI 2. HÆÐ		
MÆLIKY.	1:100	HANNAÐ GT.
DAGS.	14 FEBR. 1966	TEIKNAD GT.
TEIKN. NR.	66013	<i>Gunnar Tomasson</i>
BLAÐ	2. AF 4	