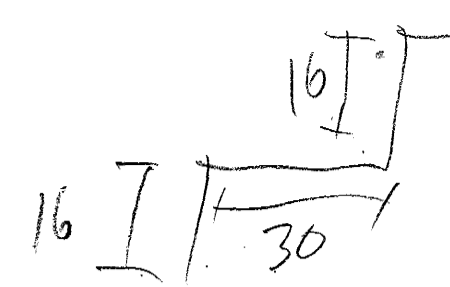


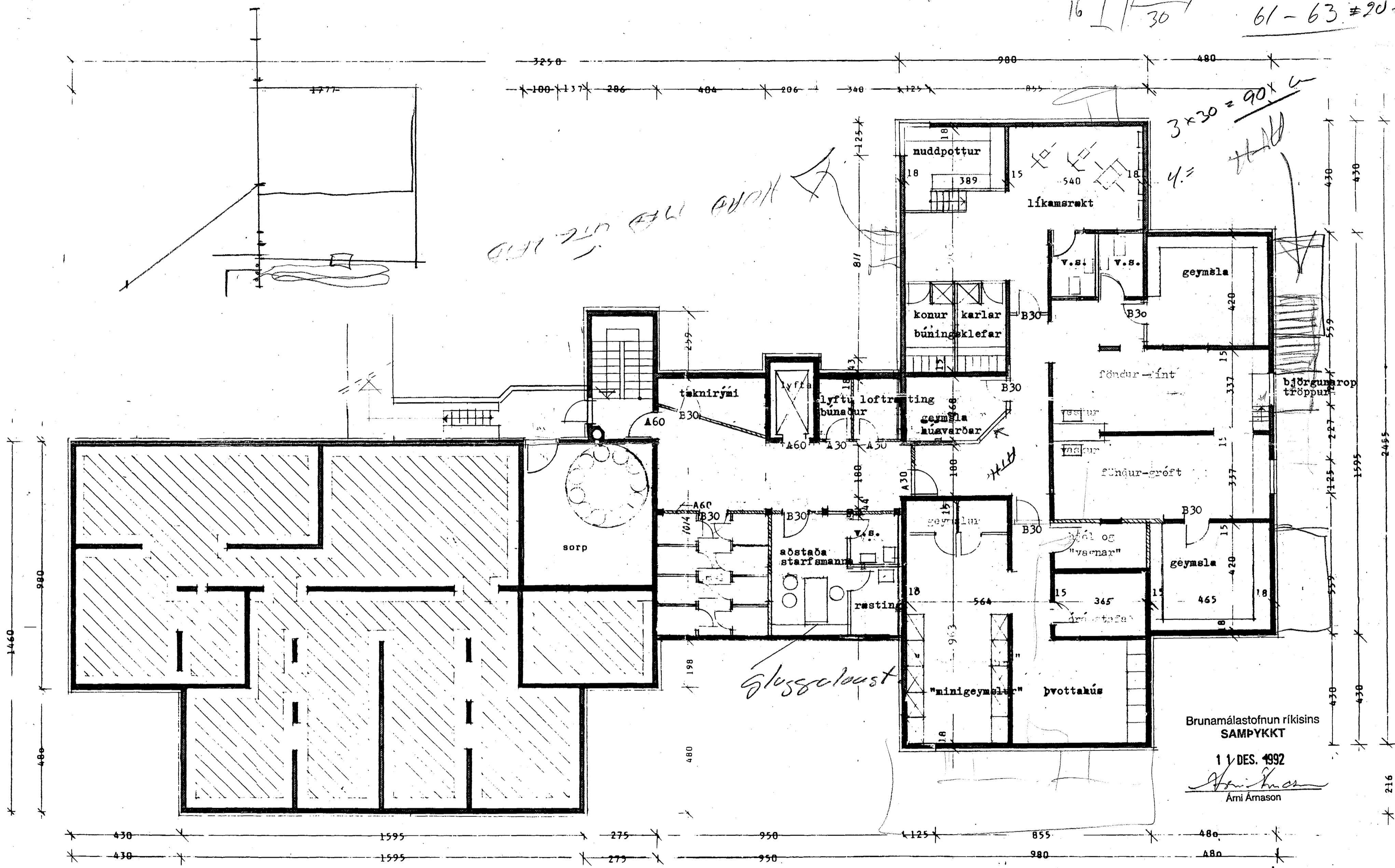
10,6 x 30



61-63 #20+1F

3x30 = 90x4
4 =

Handwritten notes and arrows pointing to specific areas of the floor plan.



Brunamálastofnun ríkisins
SAMPYKKT

11. DES. 1992

Arni Arnason

Breytt: 10.12.1992 Brunavarnir
samkvæmt fundi Brunamálastofnunar

VERK Verndáttar þjónustubúðir á lóðinni
Sólvangsvegur 1 í Hafnarfirði.
Fyrri áfangi
Grunnmynd kjallara
MELLIVARHI, 1:100 DAGS, 06.12.91 TEIEN. VERK-TEIEN.EF.

ARKITEKTASTOFA
FINN SÓLVANGSSONAR OG
HILMAR SÓRIS BJÖRNSSONAR
ADALSTRÆTI 6
101 REYKJAVÍK
SÍMI 11460
FAX 63425