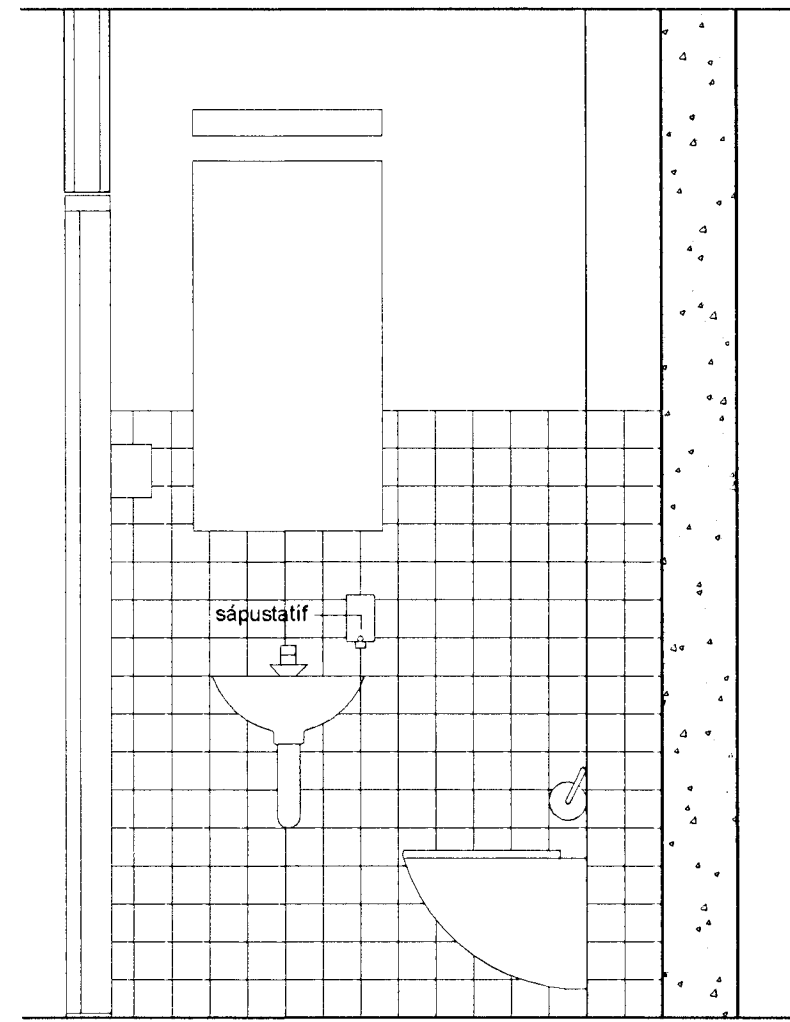
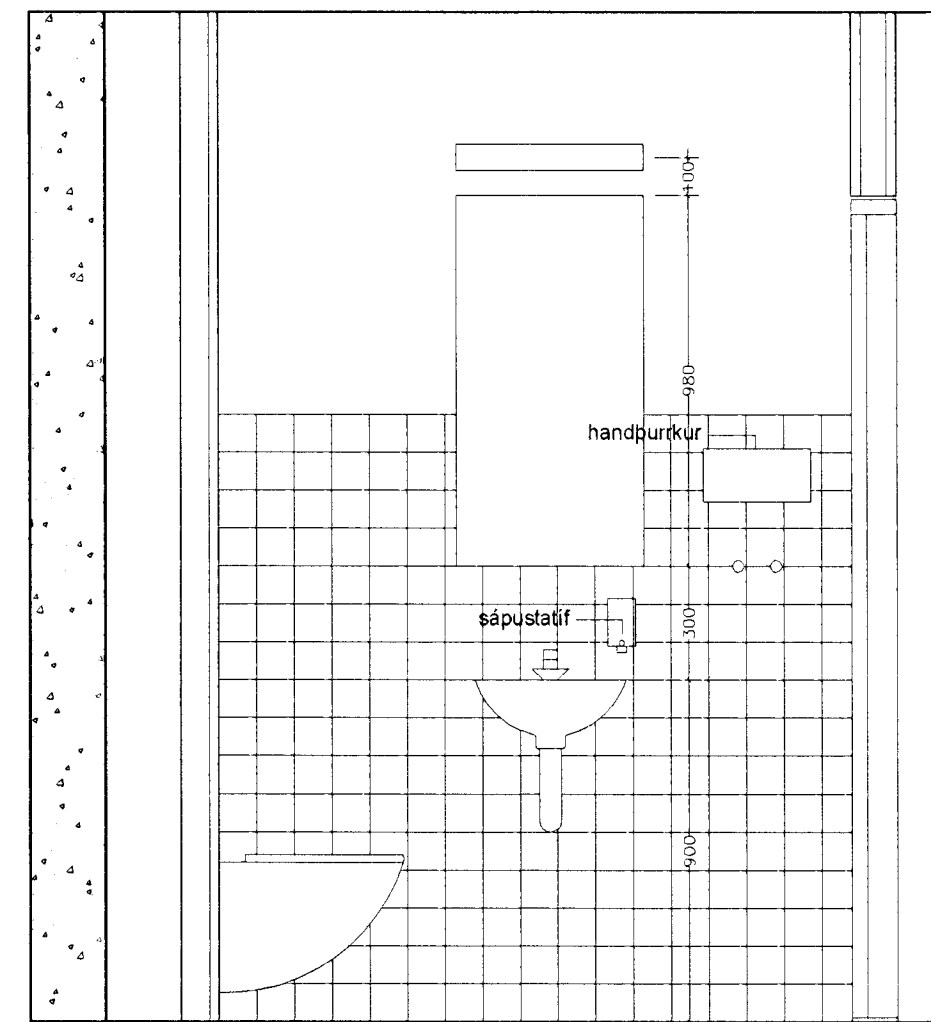


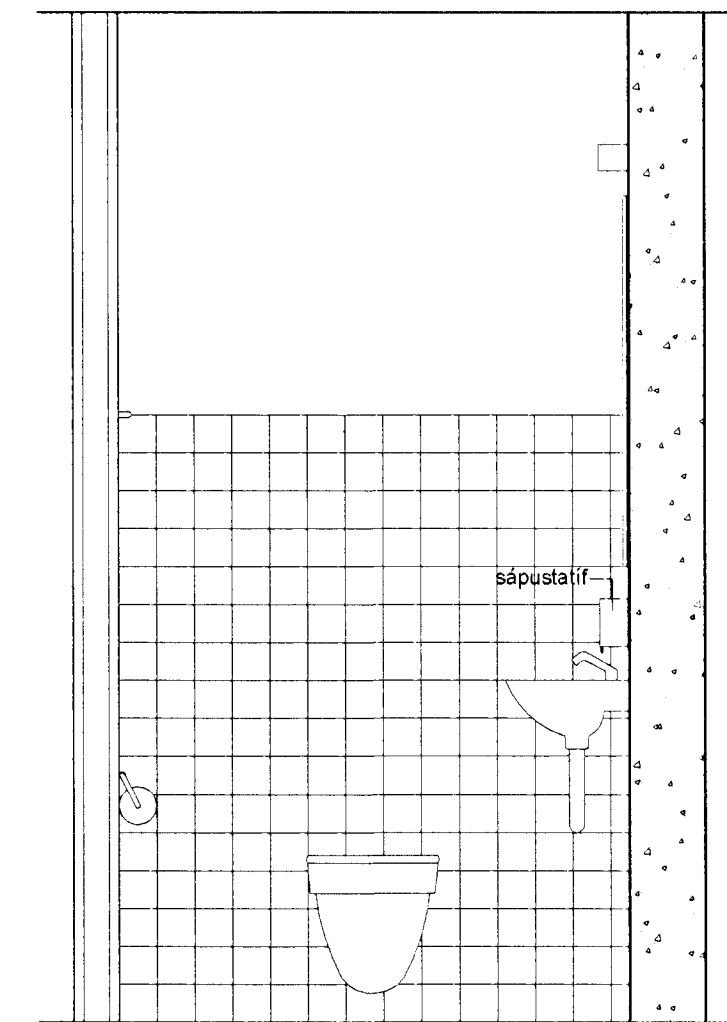
ÁSYND A.A. RÝMI 1-78



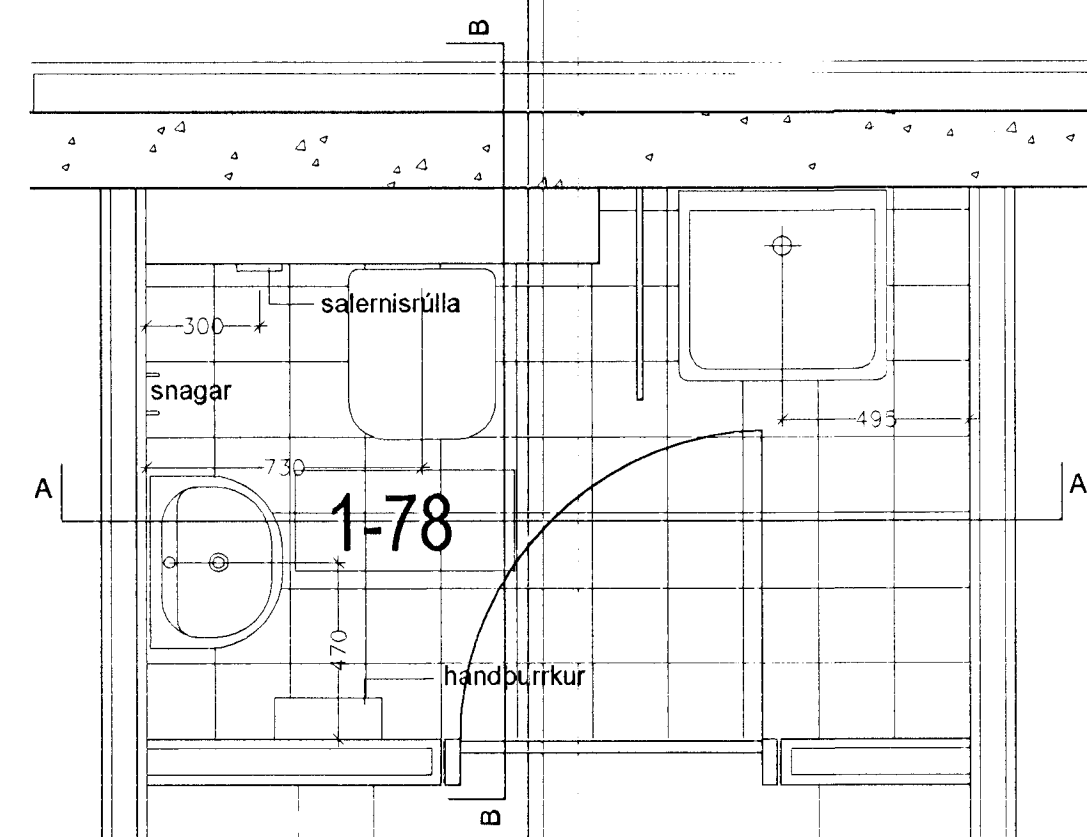
ÁSYND B.B. RÝMI 1-78



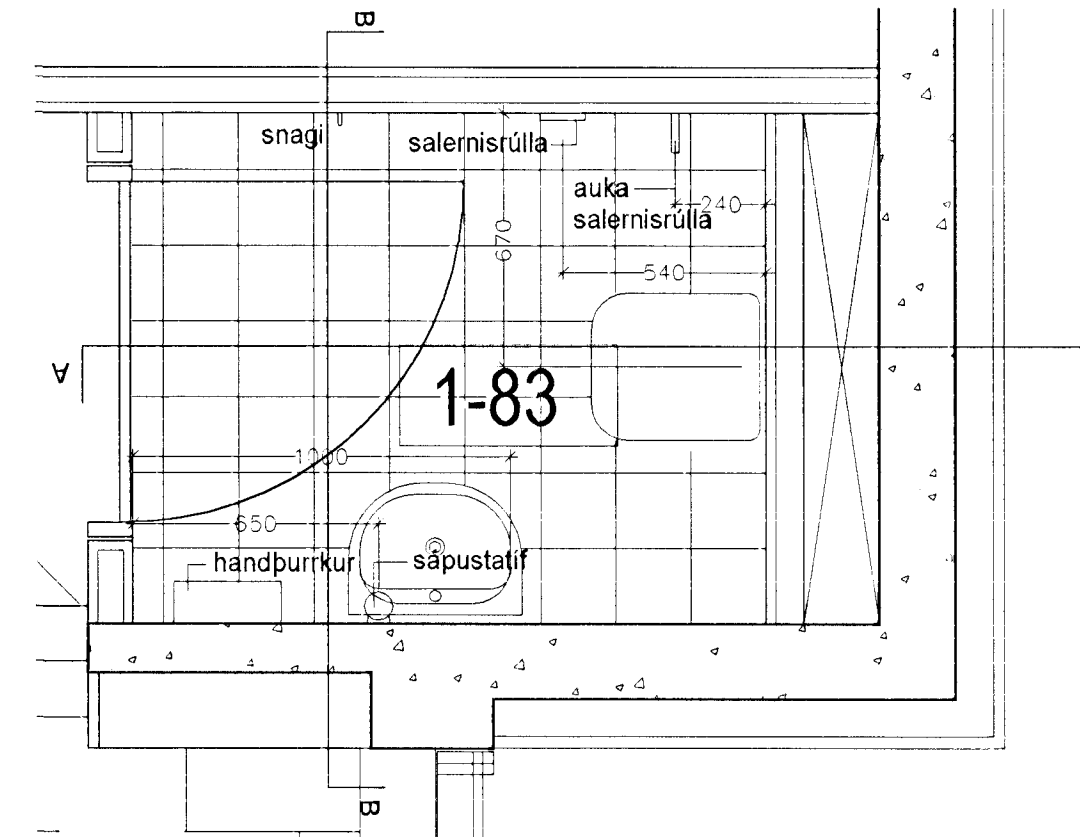
ÁSYND A.A. RÝMI 1-83



ÁSYND B.B. RÝMI 1-83



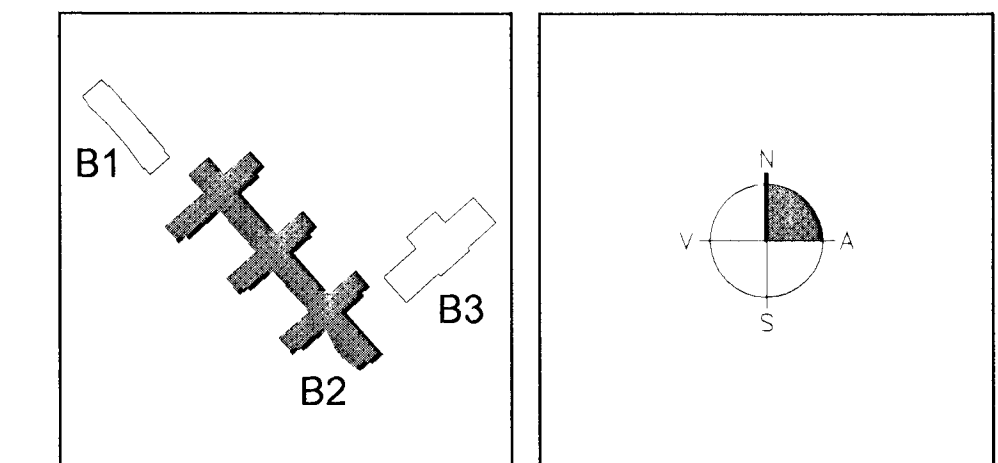
GRUNNMYND RÝMI 1-78
SNYRTING Í ELDHÚSI



GRUNNMYND RÝMI 1-83
SNYRTING Í TÓNMENT

Sigður Ólafur 071070-5269

BR	DAGS	BREYTING	REKNI	TEIKN



ARKITEKTAR
BERGSTADASTRÆTI 10, RVK
Sími 551-1469, netfang arkitekti@shof.is

FINNUR BJÖRGVINSSON
HILMAR ÞÓR BJÖRNSSON
SIGRÍÐUR ÓLAFSDÓTTIR

LANDMÖTUN
VÍSVAJÓLF
BERGASTRÆTI 10, RVK, Sími 551-1469, netfang landmotun@shof.is

EINAR E. SÆMUNDSEN
INGIBJÖRG KRISTJÁNSDÓTTIR
MARGRÉT SIGURDARDÓTTIR

VSO
VSO RÁÐGJAF
BERGASTRÆTI 10, RVK, Sími 551-1469, netfang vso@shof.is

SÓLVANGSVEGUR 4
LÆKJARSKÓLI

INNRETTINGAR	HANNADEIKN	SIÐNIK
SNYRTINGAR Í ELDHÚSI OG TÓNMENT	ATH	
RÝMI 1-78, 1-83	SAMÞYKKT	
GRUNNMYNDIR, SNÍÐ, ÁSYNDIR	KT	00028-199

KVAÐI 1:20
VERKFR. REKNI NR. TEIKN NR. BR.

B2-A-VI-027

03 JUNI 2002
VG