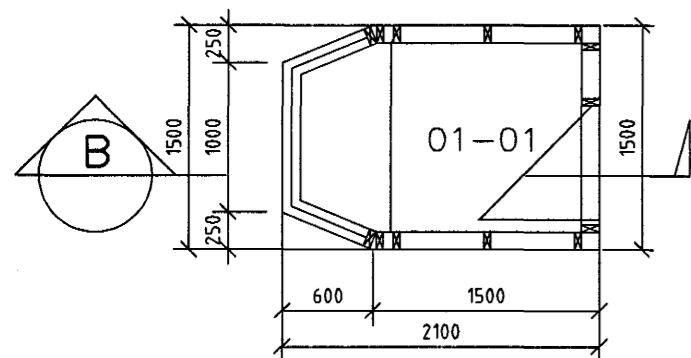


Sambýkkt þann

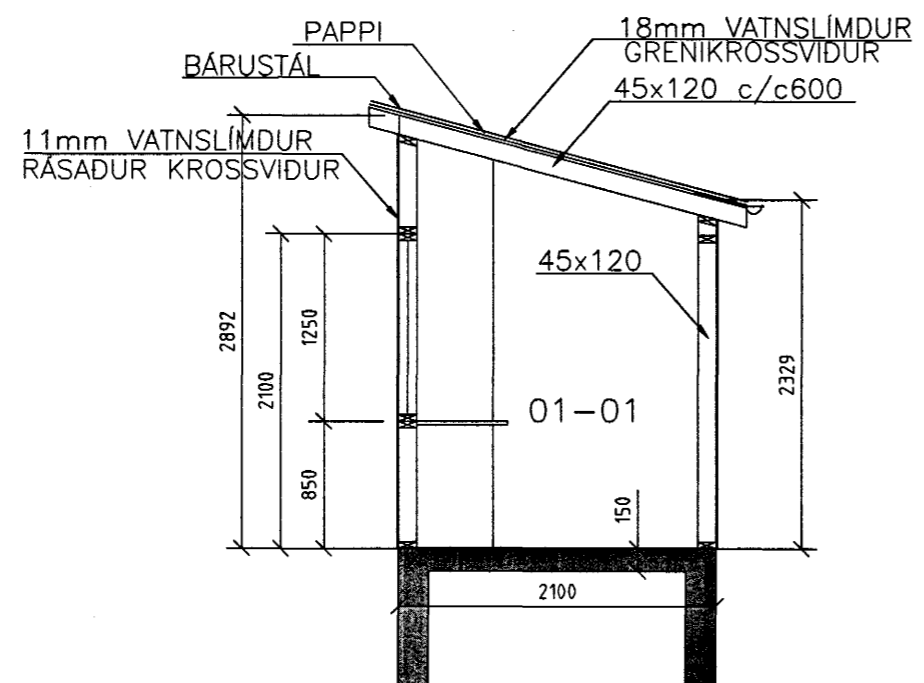
05 JUNI 2000

Byggingarulltrúinn í Hafnarfirði
Erlendur Hjálparsson
fl. B. Valtyzdóttir

DÓMHÚS 5 STK.
GRUNNM. 1:50
MATSHLUTI 03



SNID B
1:50

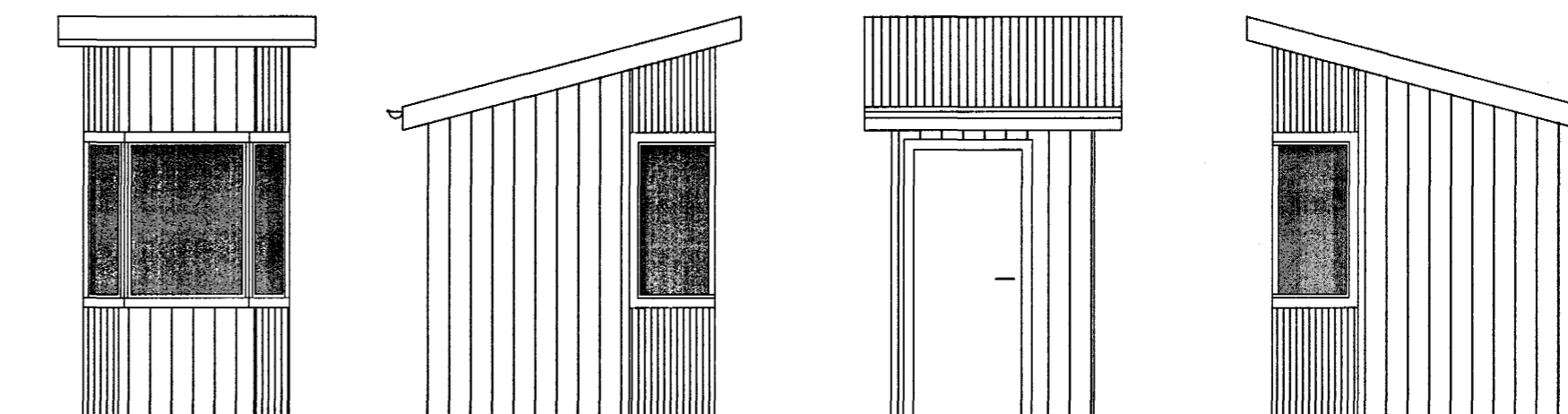


SÚÐUR

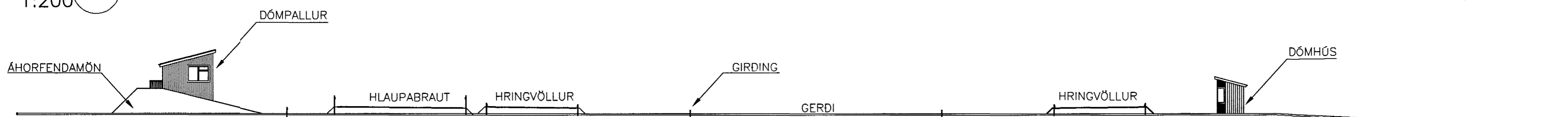
VESTUR

NORDUR




AUSTUR



SNID A
1:200



ATH.: BYGGINGARLÝSING SJÁ TEIKN.NR. 99817-A02

 HAFNARFJARÐARBÆR UMHVERFIS- OG TÆKNISVIÐ	Teikning númer:		
	SÖRLI ÍÞRÓTTASVÆÐI DÓMHÚS ÞVERSNIÐ A		
 VSB VERKFRÆÐISTOFA	A:28.03.00 BREYTT UPPSETNING-BG		
	Hannað: GÓV	Telknað: GÓVLA	Yfirfarð:
 BÆJARHRAUNI 20 220 HAFNARFJÓRÐUR SÍMI 565-1340 FAX 565-1341 Netfang: vsb@vsb.is, kt:710796-2899	Mál: 1:50/1:200	Sambýkkt: <i>B. Valtyzdóttir</i>	
	Dags: 27.03.2000	Nr: 99817 - A03-A	