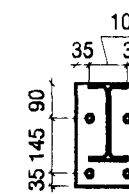
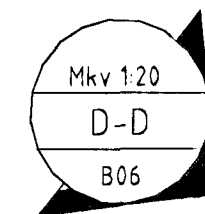
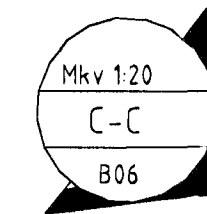
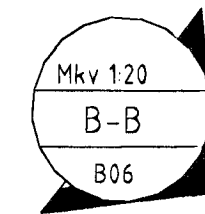
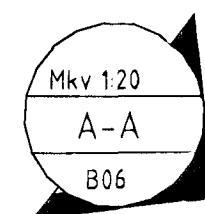
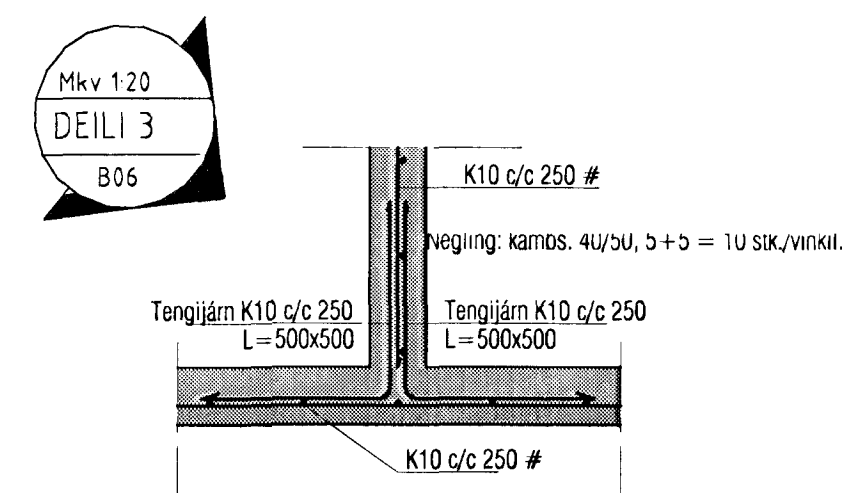
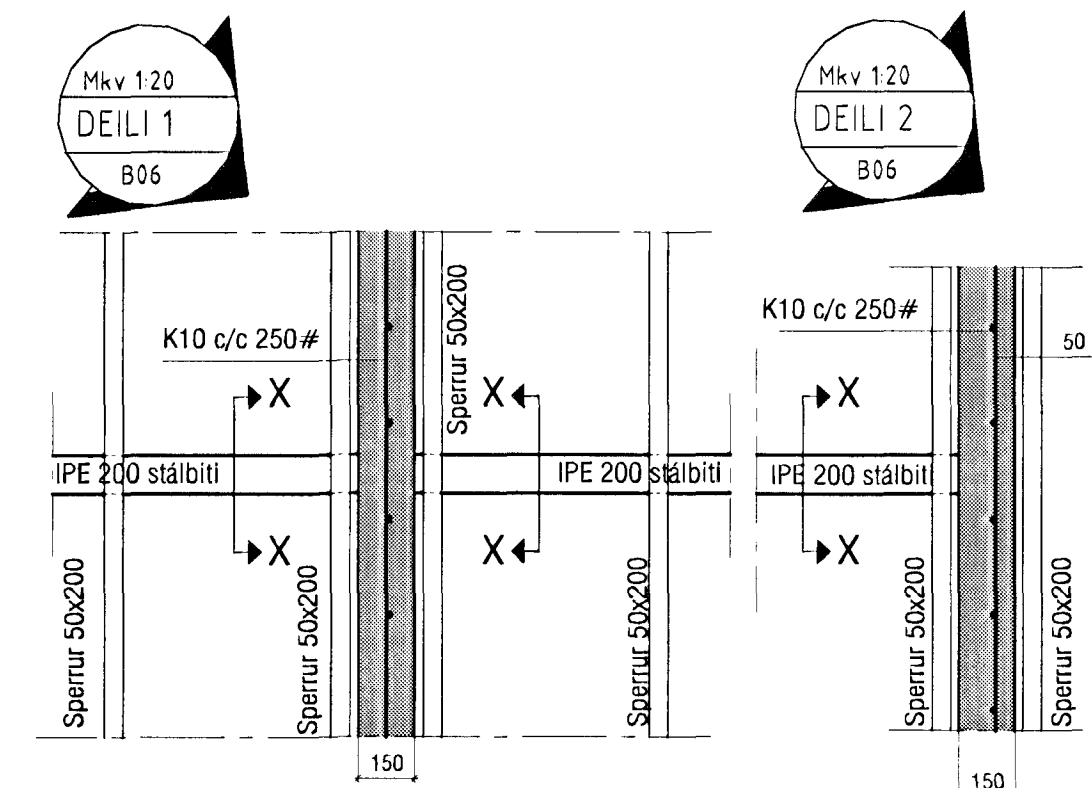


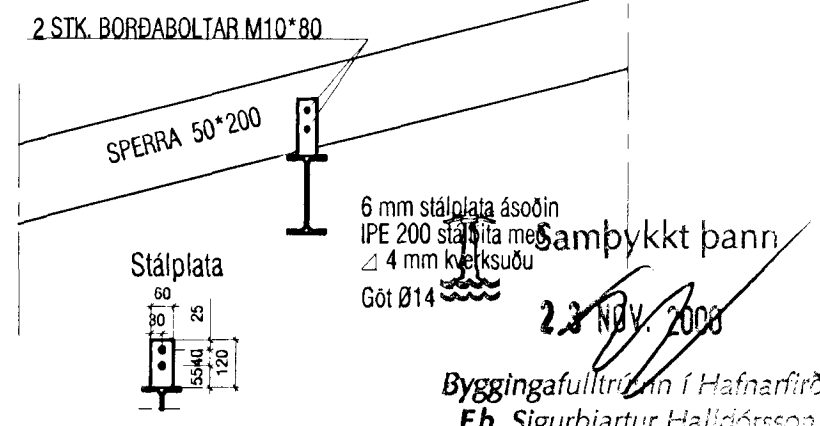
SNID X-X



8 mm stálplata ásoðin
IPE 200 stálbita með
4 mm kverksuðu
Göt Ø18
Múrboltar M16/10x110



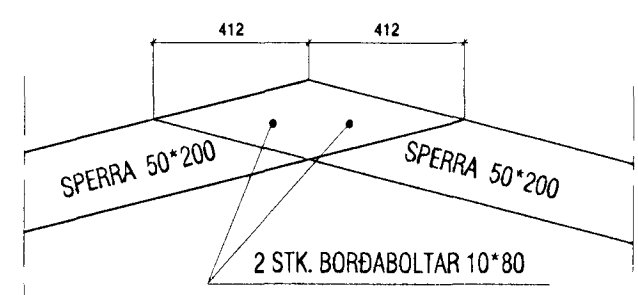
① PAKGLUGGR:
Á hver samskeyti skal setja 1 stk. BMF 90 vinkil með styrkingu
Negling: kamb. 40/50, 5+5 = 10 stk./vinkil.



SPERRA 50*200
BOLTUÐ Á VEGG MEÐ
M10 C/C 600 mm MUR-
BOLTUM, L=130 mm
PAPPAMILLILEGG

2 STK. BORDABOLTAR 10*80
2K12
K10 C/C 250 LÓÐRÉTT OG LÁRÉTT
2K12
ÍSTEYPT FLATJÁRN 40*500*4
GALVANISERAD

2 STK. BORDABOLTAR 10*80
2K12
K10 C/C 250 LÓÐRÉTT OG LÁRÉTT
ÍSTEYPT FLATJÁRN 40*500*4
GALVANISERAD



Br. 1: Þakgluggum bætt við.

<p>VEKTOR - hönnun og ráðgjöf - Nýbýlavegi 6, 200 Kópavogi.</p>		<p>Sigurður Halsteinnsson byggingataeknifraeðingur Kt. 030859-7749 sími: 554-6650 fax: 554-6668.</p>	<p>SÖRLASKEIÐ 17, HAFNARFIRÐI ÞAKSPERRUR GRUNNMYND OG SÉRMYNDIR</p>
<p>Tilvaka: _____ Gefið af: _____ Gert af: _____</p>		<p>1 15.11.00</p>	<p>23. NOV. 2008</p>