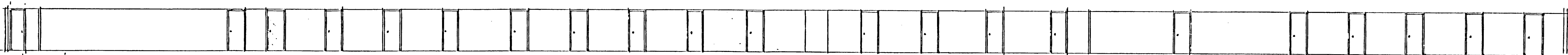
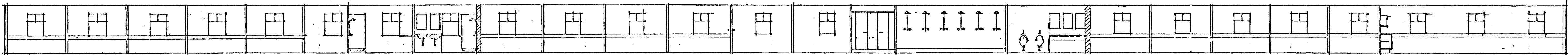


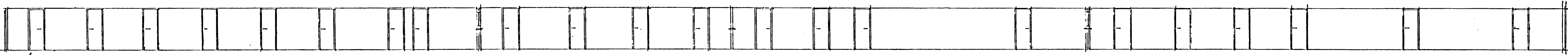
LÖÐR. SNIÐ A-A



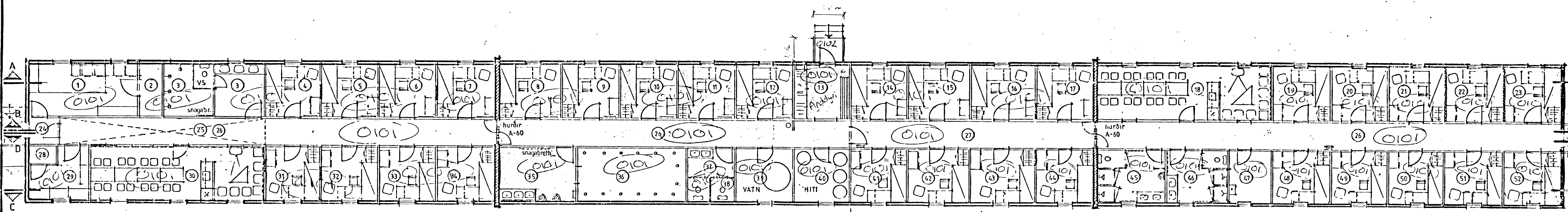
LÖÐR. SNIÐ B-B



LÖÐR. SNIÐ C-C



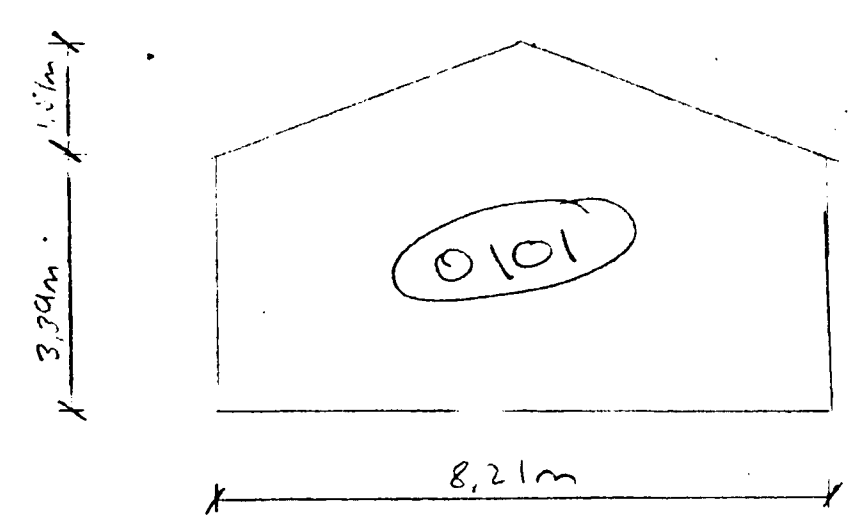
LÖÐR. SNIÐ D-D



GRUNNMYND AF SVEFNSKÁLA B

bessi hluti er teppalagdur

79.9m



Alcan á Íslandi hf.			
Skráning matshluta bygginga í Straumsvík			
SVEFNSKÁLI B	123154	34	
<small>Helli byggingar</small>	<small>Fastanúmer</small>	<small>Landnúmer</small>	<small>Matshlutanúmer</small>
VST Verkfæðistofa Sigurðar Thoroddsen hf. kt. 611276-0289			
<i>Niels Indriðason</i>			2003-09-23
<small>Niels Indriðason kt. 181144-3949</small>			<small>Dagsetning</small>

ÍSLENSKA ÁLFÉLAGIÐ HF.			
SVEFNSKÁLI B, GRUNNMYND, VEGGJAMYNDIR	1:100	<i>Dagsetning</i>	<i>28/9/03</i>
TEIKNISTOFA SNORRA HAUSSONAR AUSTURBRÚN 37A RVK SÍMI 5686722	4140	186,862	BA 1200

Skýgð um ...