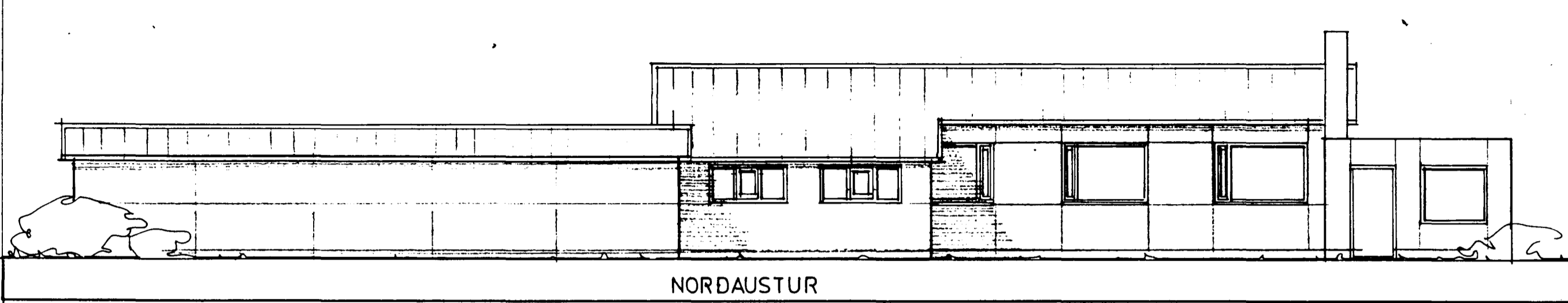
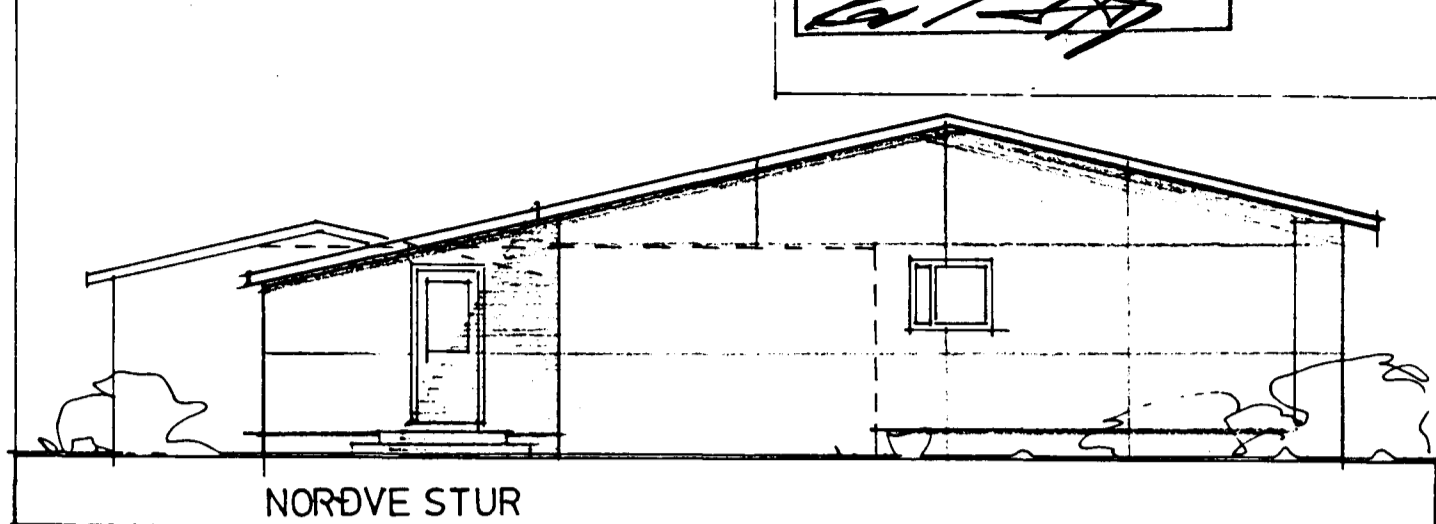


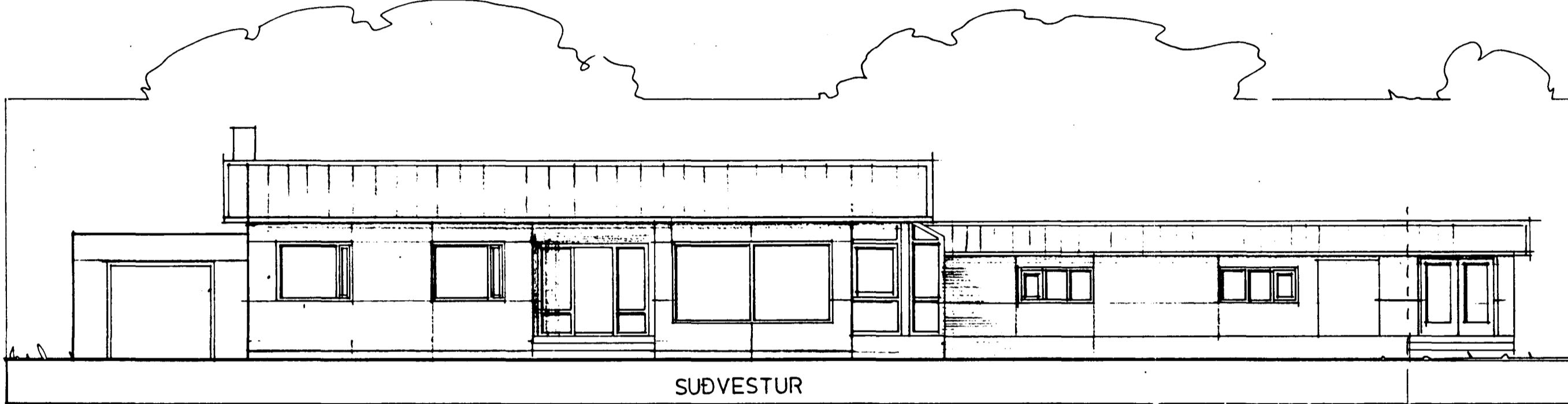
Samykkt á fundi bygginga-
nefndar þ. 22/3 1995
BYGGINGAFULLTRÚINN
Í HAFNARFIRÐI



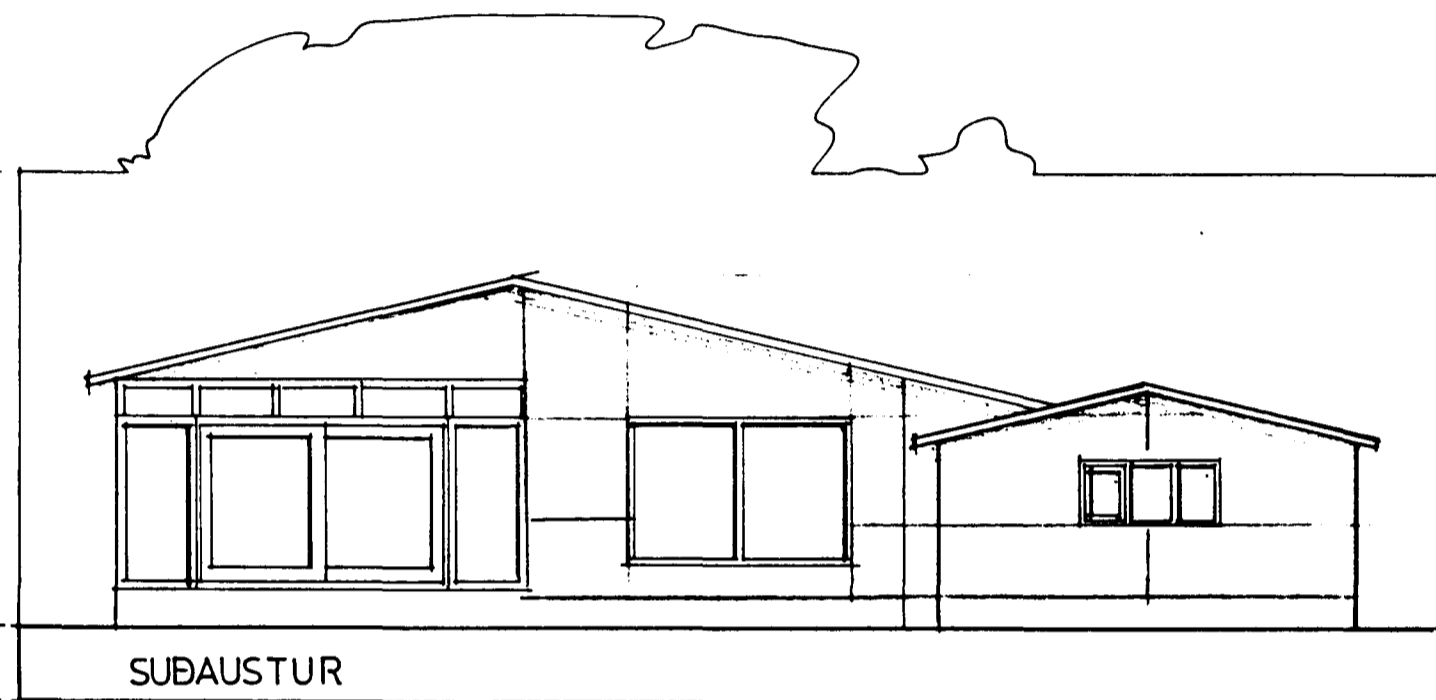
NORDAUSTUR



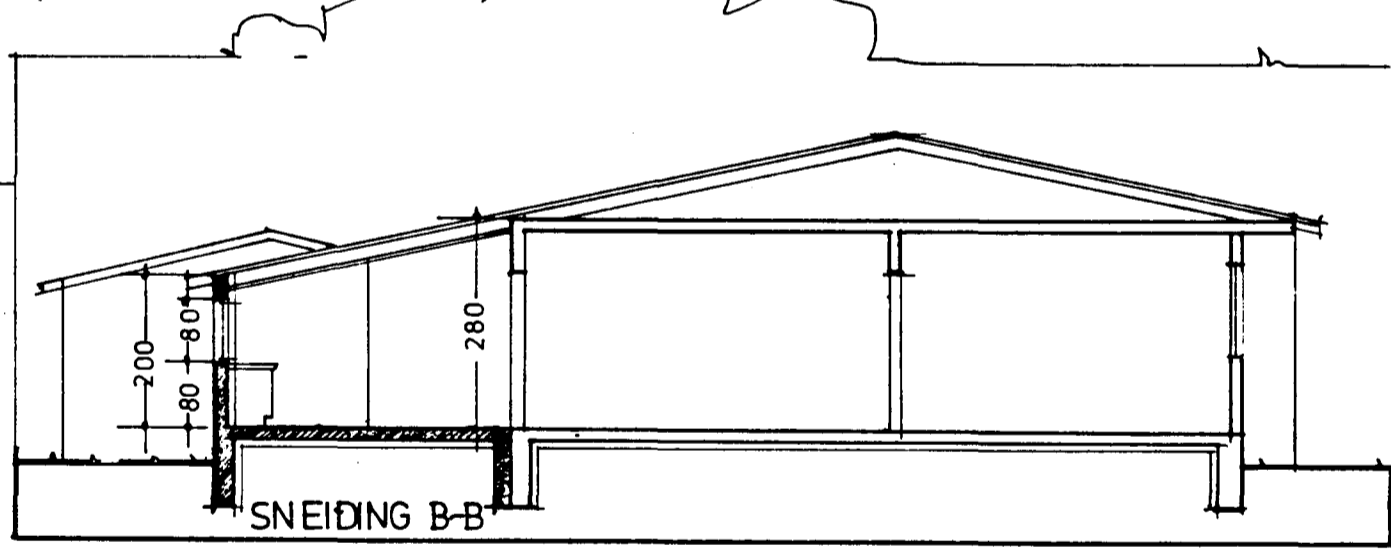
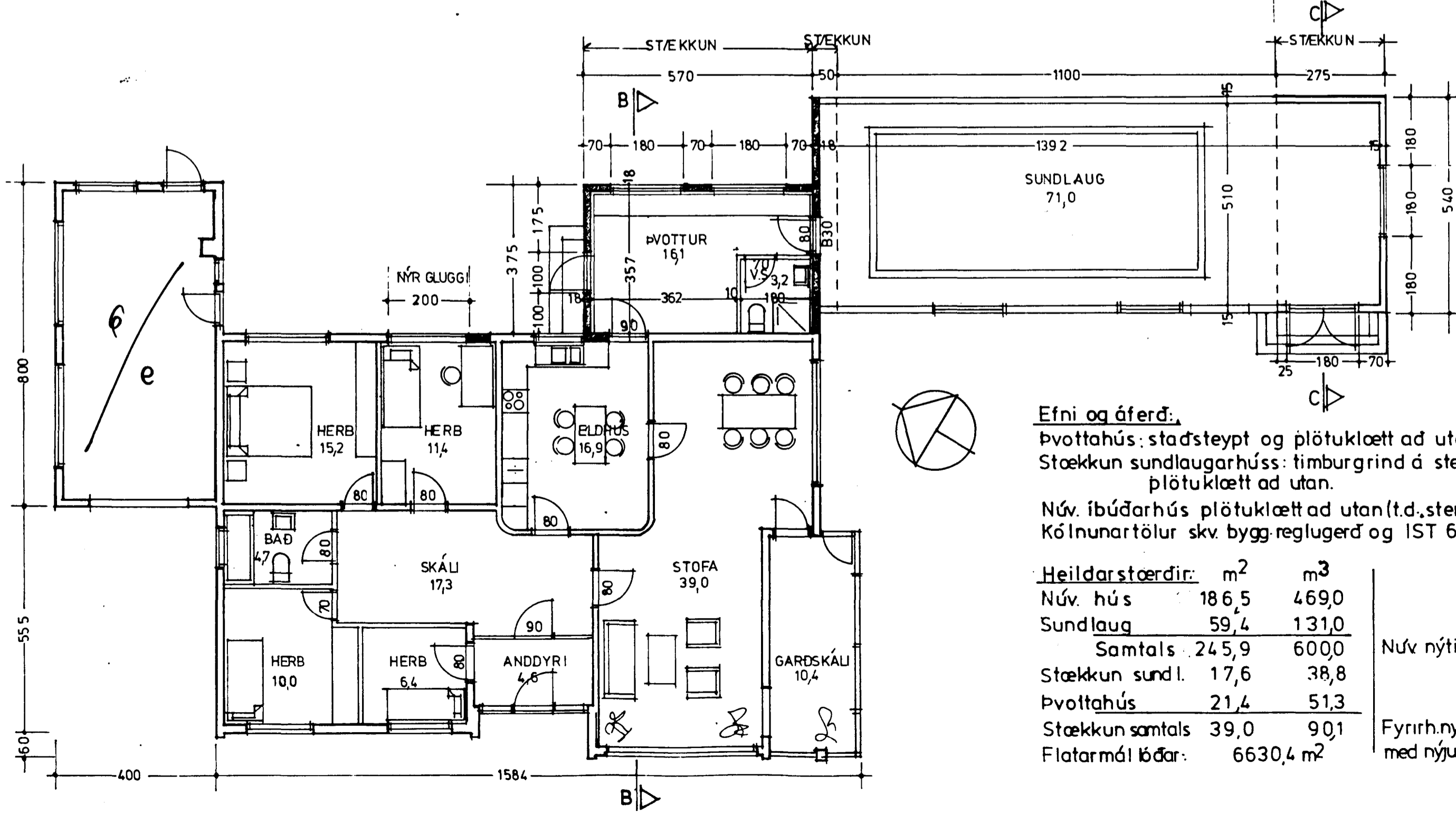
NORÐVE STUR



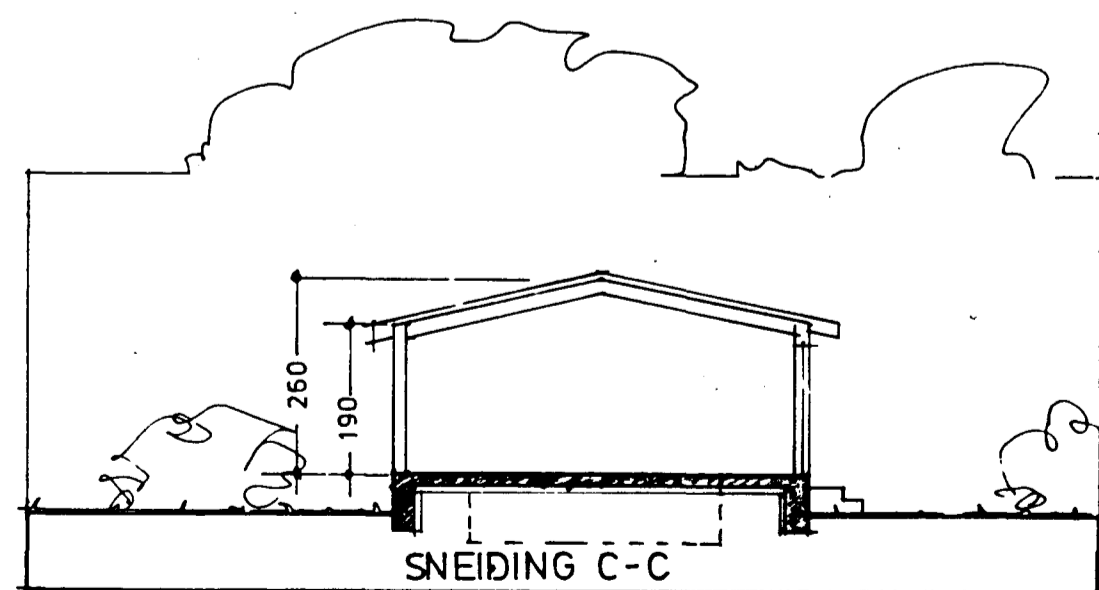
SUÐVESTUR



SUBAUSTUR



SNEIÐING B-B



SNEIÐING C-C

Efni og áferð:
Þvottahús: staðsteypt og plötuklætt að utan (t.d. stenex)
Stækkun sundlaugarhúss: timburgrind á steyptri plötu,
plötuklætt að utan.
Núv. íbúðarhús plötuklætt að utan (t.d. stenex)
Kólnunartölur skv. bygg. reglugerð og IST 66.

Heildarstöerðir:	m ²	m ³
Núv. hús	186,5	469,0
Sundlaug	59,4	131,0
Samtals	245,9	600,0
Stækkun sundl.	17,6	38,8
Þvottahús	21,4	51,3
Stækkun samtals	39,0	90,1
Flatarmál löðar:	6630,4 m ²	

Núv. nýting: 0,037
Fyrirh. nýting: 0,043
med nýjum bíl sk. 0,054

Ivon Stefán Cilia arkitekt faí sílfurteig 1 105 R s5813000
VERK Stekkjarberg 7 MKV 1:100
EFNI Grunmynd, útlit og sneiðingar DAGS 28.01.95 NR A-02