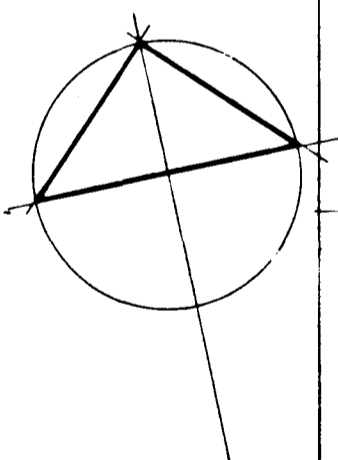
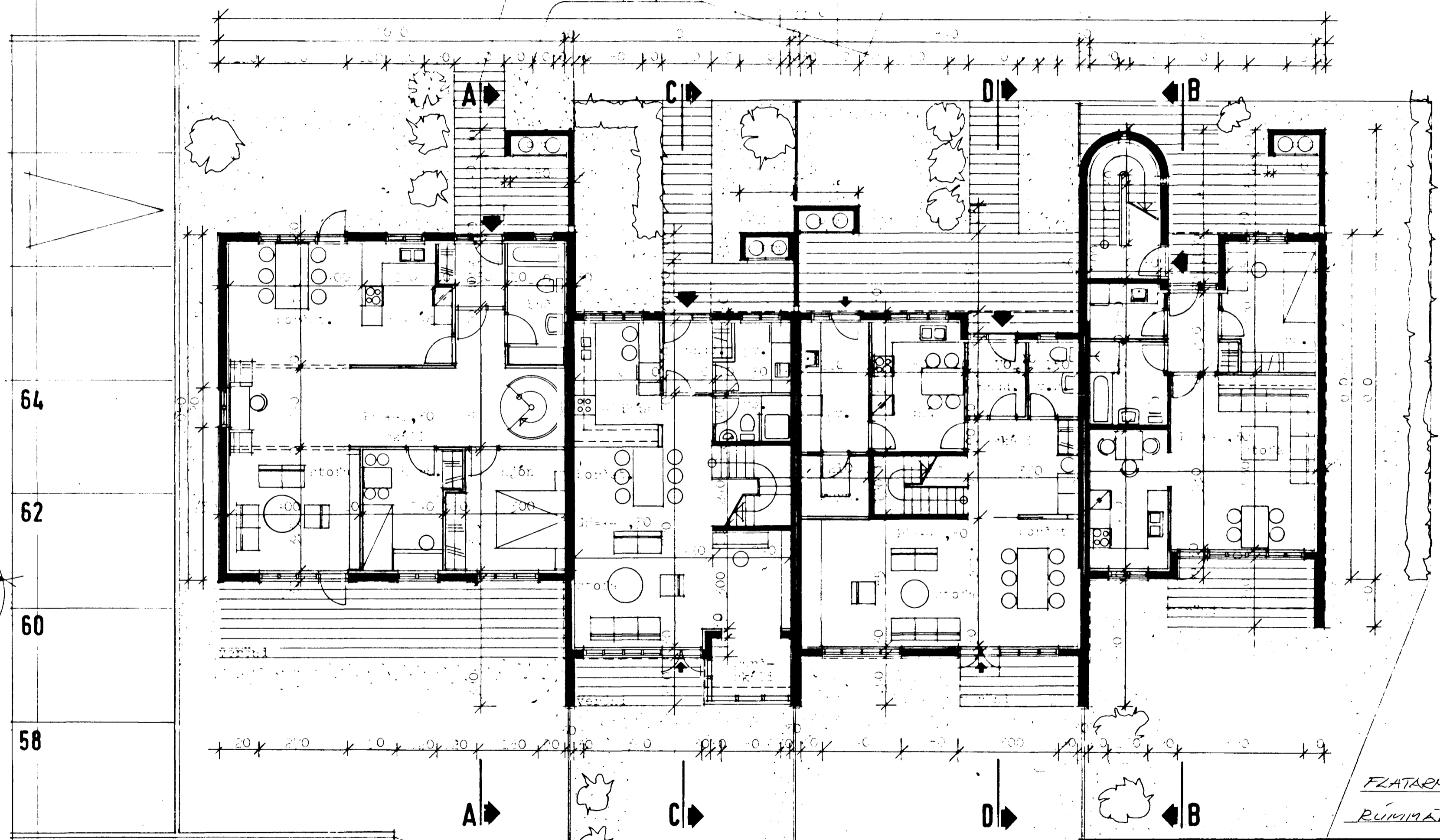


Samþykkt á fundi byggingar-  
nefndar þ. 25/6 1986  
BYGGINGAFLUTDRÖGN  
Í HAFNARFIRDI  
*E. E. E.*



FLATARMÁL = 5,67 m<sup>2</sup>  
RÚMFRUM = 15,0 m<sup>3</sup>

<b>TEIKNISTOFA</b>		HAFNARFIRDI	
GYLFI GUDJÓNSSON INGIMUNDUR SVEINSSON ARKITEKTAR FAI DSA		BYGGINGAFLUTDRÖGN	
SKÚL AVORRSTÍG 3, 101 RÚM SAMM. 26747 OG 14990		BYGGINGAFLUTDRÖGN	
HANNAÐ	TEIKNAD	REYKJAVIK	VERK
KVARN	00 00 00	BREYTT	BLAD
		<b>101</b>	
sept '84 af 1986-03-02 HÍG nr. 60 HVS			